

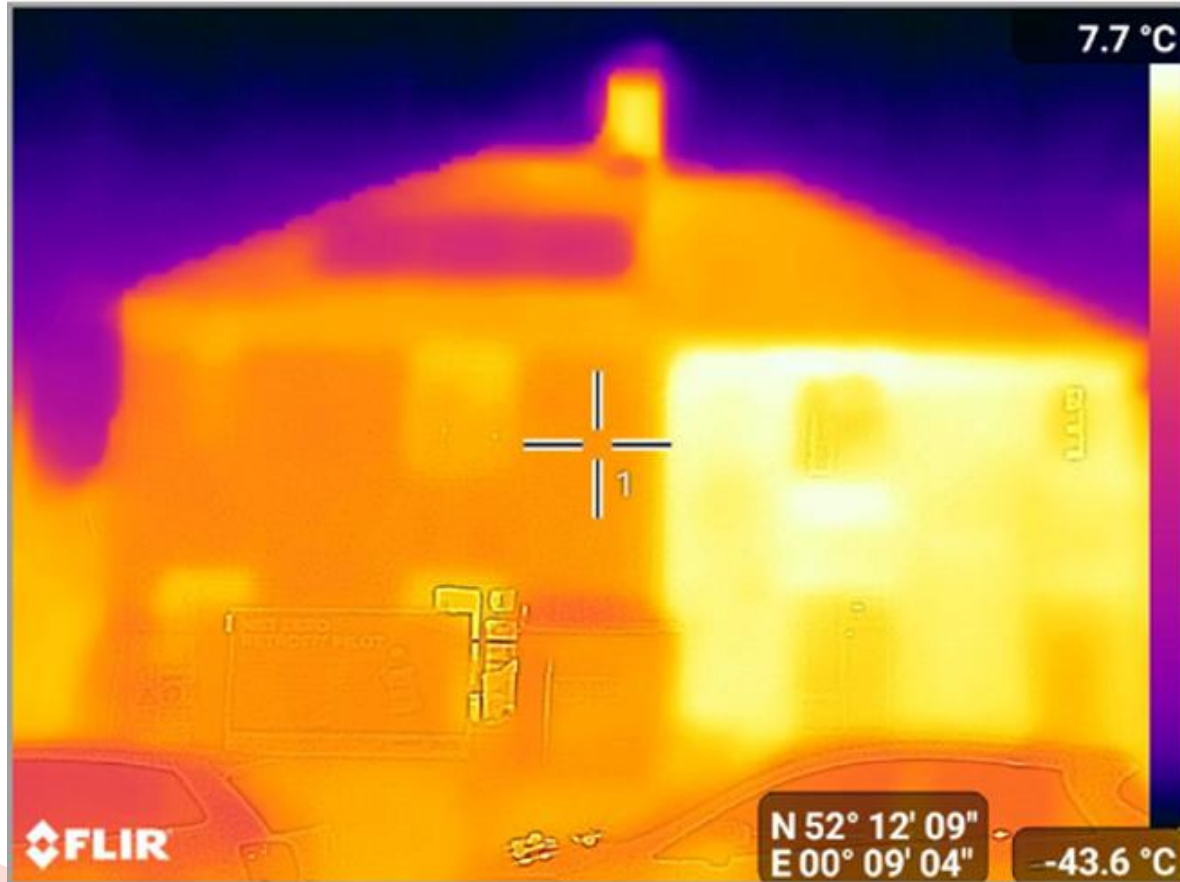



# Cleaner. Healthier. Energy Efficient. A £15m Retrofit Programme


Steph Salmon, Energy + Retrofit Manager  
Cambridge City Council

*One Cambridge, fair for all*


# Why Retrofit?



 Better homes

 Better health

£ Lower bills

 Lower carbon

Improving people's lives through better, more comfortable homes

*One Cambridge, fair for all*

# Building Retrofit Capability

 People	 Partnerships	 Evidence
Dedicated retrofit team	Contractor Partnerships	Performance Monitoring
Resident engagement	CERP	Innovation
Programme Management	Supply Chain	Continuous Improvement

Building the people, partnerships and evidence to deliver retrofit at scale

# Warm Homes: Social Housing Fund – Delivering at Scale

£15m

~370 homes

Fabric

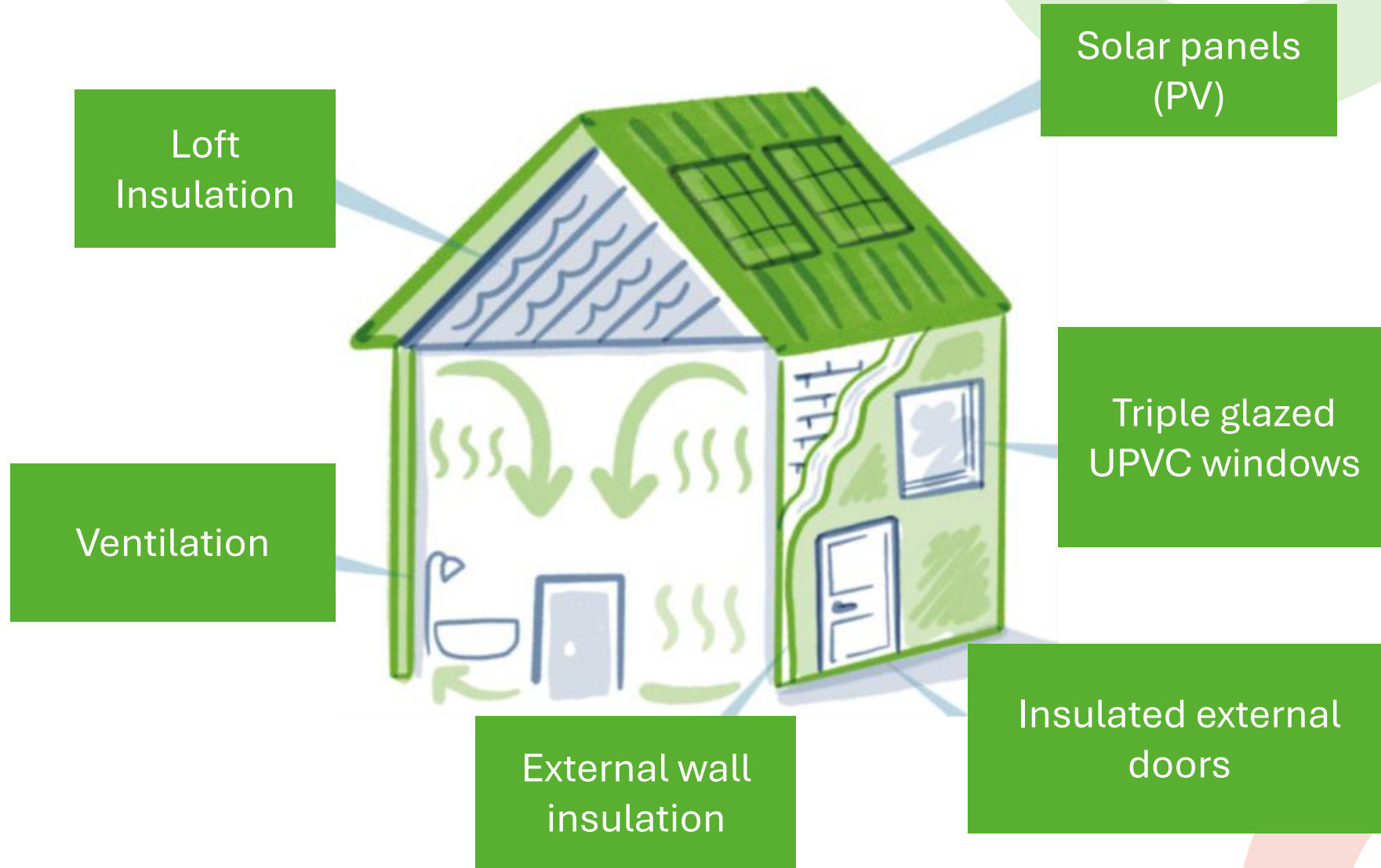
Heating

Renewables

Ventilation

Cleaner • Healthier • Lower Carbon

# A Whole-House Approach



*One Cambridge, fair for all*

# Are We Making a Difference?

**70%**

Maximum  
heat loss  
reduction

**33%**

Average  
reduction

**Comfort**

Healthy  
indoor  
temperatures

**Moisture**

Lower  
condensation  
risk

**Evidence**

Real world  
performance  
monitoring

Measured in occupied homes before and after retrofit works

# Learning Before Scaling



**The same home. A different future.**

*One Cambridge, fair for all*

# What We've Learnt



Residents first



Measure performance



Ventilation matters



Partnerships



Continuous learning



**We are not just retrofitting homes.**

**We are building the capability, partnerships and evidence needed to transform housing for the future**

*One Cambridge, fair for all*

Thank you

[steph.salmon@cambridge.gov.uk](mailto:steph.salmon@cambridge.gov.uk)

*One Cambridge, fair for all*

