



Lancashire Gritting Live

Rob Wilson

Winter Maintenance in Lancashire

Robust Gritting Fleet

Lancashire County Council operates a large gritting fleet including 47 priority gritting routes.

Extensive Road Coverage

The fleet treats about 1,800 miles of priority roads, typically taking up to four hours under normal conditions.

Skilled Staffing and Rapid Deployment

Up to 150 trained drivers work around the clock during winter for rapid gritter deployment during snow or freezing warnings.

Public Communication and Safety

The council provides public updates on gritting schedules via X and through updates on the website

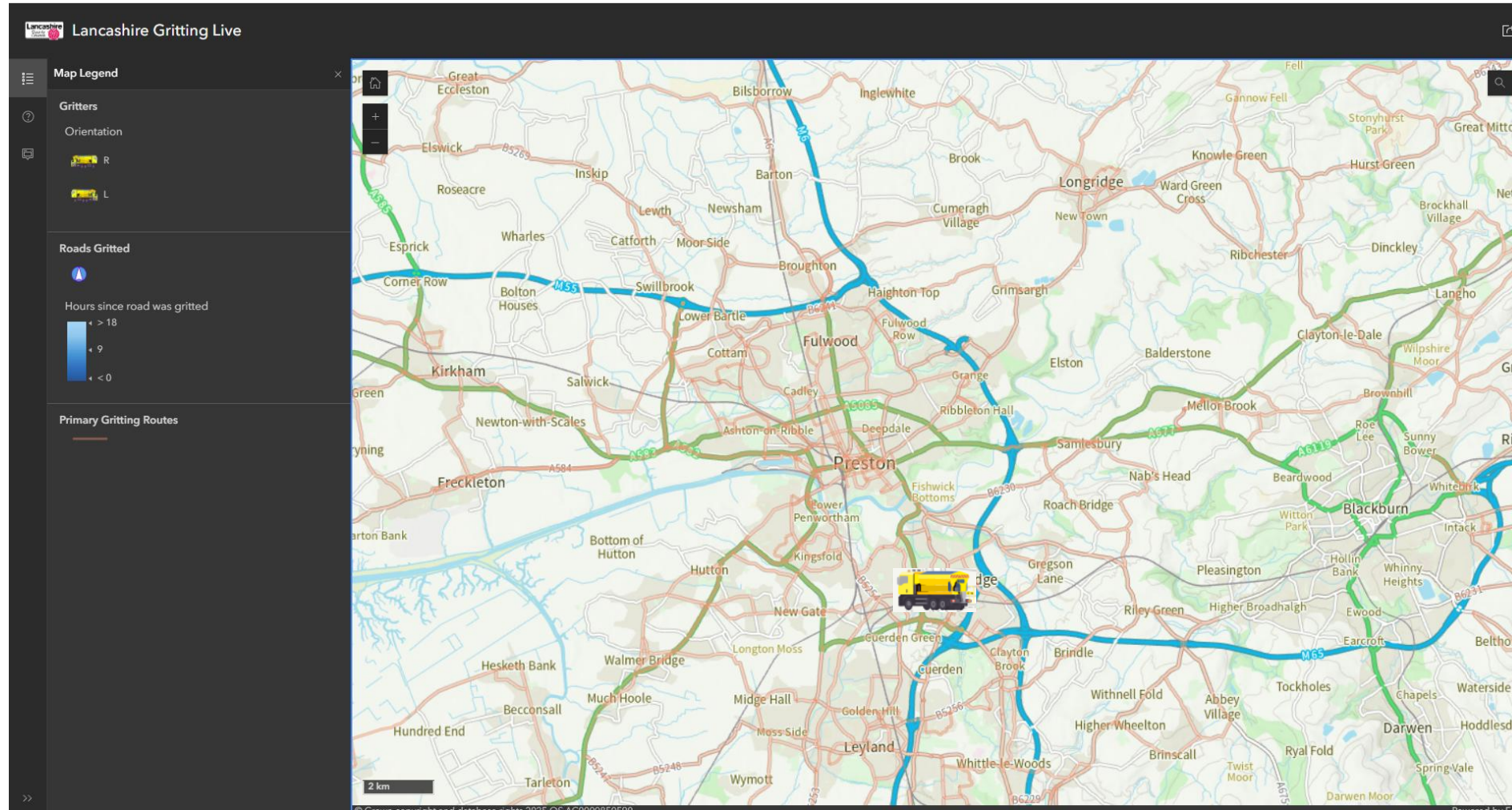


Lancashire Gritting Live – What is it?

- Online interactive map showing real time gritting operations available to the public
- Provides current gritter locations (when salting) including name of gritter
- Shows which roads have been treated within the last 18 hours
- Accessible via LCC website
- Developed to increase public awareness and improve confidence.
- Provides real time gritting visibility helping drivers plan safer routes in hazardous winter conditions.

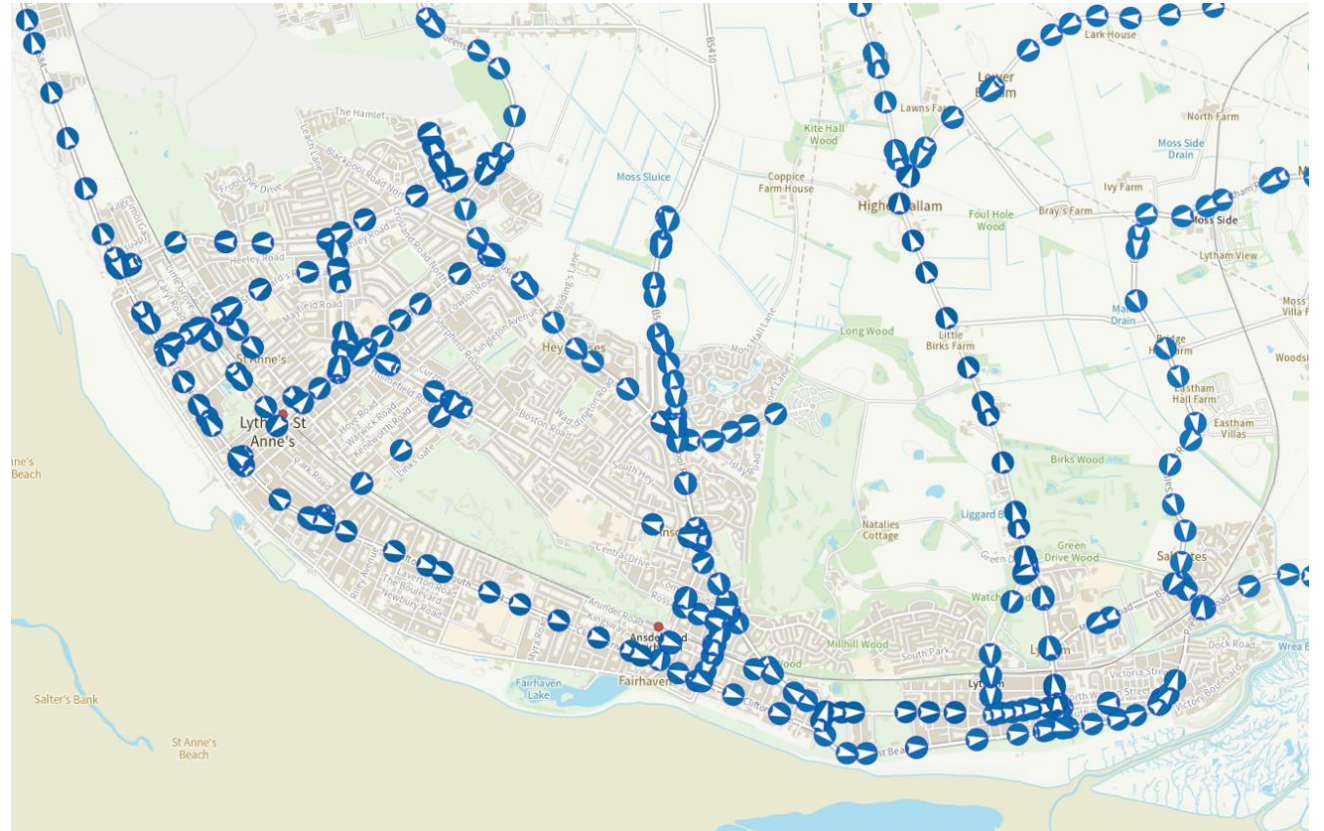


Online Interface



Online Interface

- Blue arrows indicate roads treated within last 18 hours.
- Heatmap effect
- Click on arrows to display time of treatment



How Does It Work



- Uses existing Exactrak technology
- Map updates every 30 seconds
- Displayed via ArcGIS Online Instant Sidebar application.
- Short delay built in for security



Launch



- Launched followed on from the social media campaign to “Name the Gritter”
- Reel generated and published on social media.
- [Gritter Tracker | Lancashire County Council](#)
[\(YouTube link\)](#)



Any Questions?

