

THE MJ | ACHIEVEMENT AWARDS 2025

20 June | Park Plaza, Westminster Bridge

Best Council Services Team
WINNER

Sponsored by





Derby City Council School Safe Haven Zones



**a long-standing
vision in an
evolving world**



Why the need!



Angry parents hit out at drivers breaking new school safety rules

Enforcement cameras are to be introduced

NEWS By [Nigel Slater](#) Local Democracy Reporter
05:00, 10 JUN 2022

Bookmark



Comments 20

Enter your postcode for local news and info

Enter your postcode

Go

In YourArea



Drivers are ignoring

Slydogontheside

All for it, put up the warning signs, put up the enforcement cameras, then treat the same as any other traffic infringement. Once big fat fines start dropping through letter boxes, then maybe these self entitled people will get the message. If it keeps the kids safe, then surely there is no argument.

2daysnews

Should be rolled out to all schools plus on football nights / days to stop all parking

leanneot40

I would love them to include Bemrose primary school into this scheme, it's so dangerous on our school run morning and evening and someone will get seriously hurt sooner or later.

SHOS and SSHZ promote

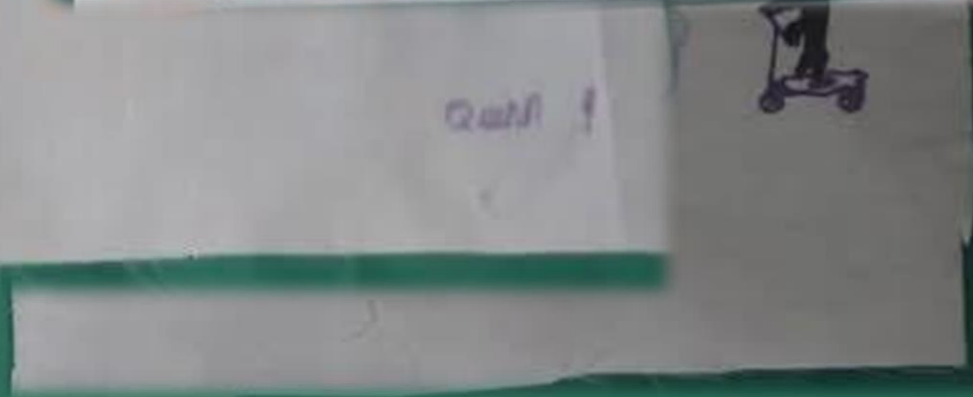
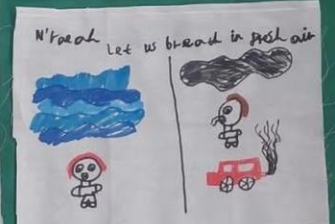


Sustainable travel & Health Benefits



Vehicle exhaust

Olivia



Consultation Responses

“ I fully support the safe havens outside schools as living near one, it is an accident waiting to happen when the school runs take place. There are cars parked everywhere with total disregard for public safety. ”



CG



Derby City Council

Your ref	AT 508 Mickleover Primary
Contact	Traffic Management
email	Traffic.Management@derby.gov.uk
Tel	01332 640000
Fax	01332 643299
Minicom	01332 640666
Date	4 th October 2022

Dear Resident

School Safe Haven Zone (SH03/04) – Scheme Confirmation

You may recall receiving a letter informing you of our intention to introduce a School Safe Haven Zone outside Mickleover Primary. The letter was sent to introduce you to the idea, outline its purpose and conduct some initial consultation to understand if there were any significant objections to conducting a trial.

As no significant objections were received the intention is now to proceed and introduce the Zone with a start date for the new restriction of Monday 7th November 2022.

To confirm, the Zone will be introduced on an experimental basis first. This means the new restriction will be temporary for a maximum period of 18 months. A six month period of public consultation will begin at the start and all valid objections will be considered to help decide whether or not to make the Zone permanent.

Details of how to object and engage in the consultation will be made available as regulations require by street notice and public advertisement.

IMPORTANT – RESTRICTION DETAILS AND EXEMPTIONS

Please read the information below to learn more about the new restriction, who can apply for an exemption and the process to follow.

The Restriction

A 'No Motor Vehicles' moving vehicle order will be introduced along Vicarage Road, from its junction with Park Road to its junction with Farnworth Road. The operational times of the restriction will be between 8.30 and 9.00 in the morning and 3.00 and 3.30 in the afternoon, Monday to Friday. The restriction will be applicable during school term times only and consideration will be given to the use of camera technology if compliance levels require.

You will be able to access the community centre carpark before 8.30am and can leave at any time.

Traffic & Transportation | Communities & Place | Council House, Corporation Street, Derby DE1 2FS
derby.gov.uk

To view Derby City Council Privacy Notices please visit derby.gov.uk/privacy-notice



Derby looking ahead to School Street enforcement

- **Monitoring Process:**
 - Phase 1: Checking signage*
 - Phase 2: Observing compliance*
 - Phase 3: Analyzing data*
- **Proactive Approach: Preparatory work to ensure readiness when powers are granted**
- **Community Engagement: Public consultation to identify problem areas based on complaints**
- **Evidence-Based Enforcement: Justified and proportionate**



GET READY FOR MOVING TRAFFIC

A summary of the essential processes and suggested time required for preparation to submit an application for a Designation Order

- 1** **ALLOW UP TO SIX MONTHS FOR THIS PROCESS**
 - Draft and present a Cabinet report for consideration by the Council Cabinet.
 - Review Traffic Regulation Orders for all sites.
 - Review markings and signs.
 - Identify the sites by using historical data/information from the Traffic Management and Road Safety team and police.

- 3** **AT LEAST FOUR WEEKS PRIOR TO APPLYING FOR A DESIGNATION ORDER**

Once Cabinet authority obtained, inform Department for Transport you intend to apply for powers and consult with the Chief of Police to advise:

 - Adoption of the powers
 - Report sites
 - Rationale & why camera enforcement is proportionate
 - Carry out scoping of the sites (using cameras).
 - Gather data to ensure levels of compliance are such that site has been chosen wisely.
- 4** **SUBMIT APPLICATION TO THE DfT & AWAIT CONFIRMATION OF DESIGNATION ORDER!**

WITH THANKS TO:

BPA BRITISH PARKING ASSOCIATION

DERBY CITY COUNCIL

Sites
carefully
selected by
Traffic
Engineers
based on
data



School Safe Haven Zones

Live on 23 September 2022



Derby City Council



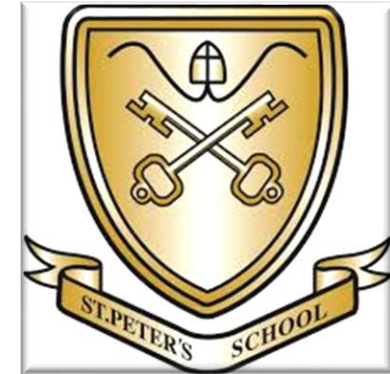
Alvaston Street



Bromley Street



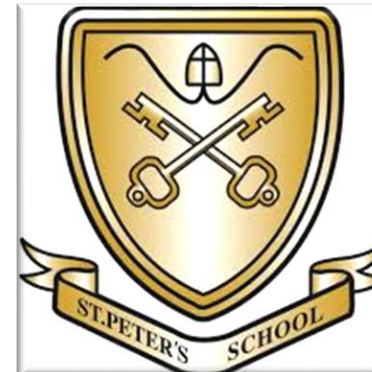
Church Street



Redwood Road



Thornhill Road



Uplands Avenue





Zone



Uplands Avenue – School Safe Haven Zone



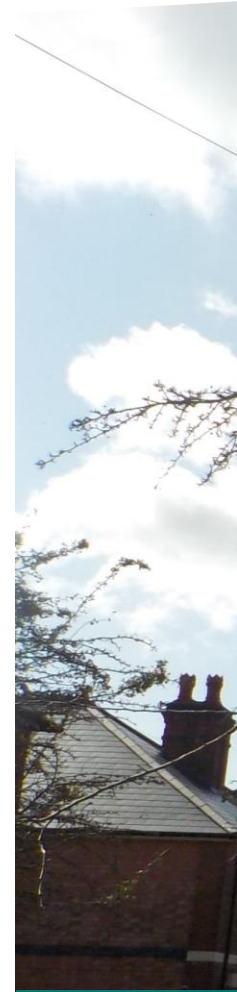
Upla



Zone



Uplands Avenue – School Safe Haven Zone



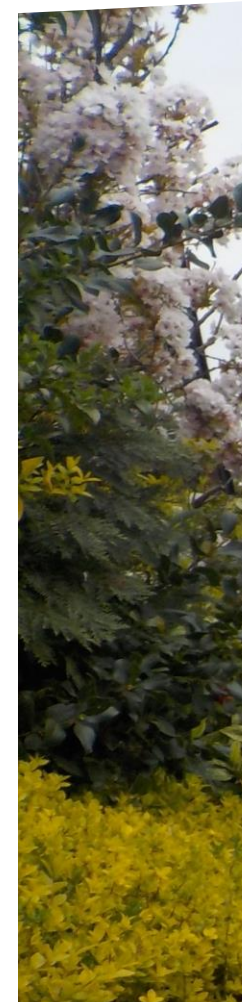
Bron



Zone



Bromley Street – School Safe Haven Zone



Brom

Zone



Bromley Street – School Safe Haven Zone

Tho



Zone



Thornhill Road – School Safe Haven Zone



Tho



one



Thornhill Road – School Safe Haven Zone



Chu

The achievements, from week 1 to 18

6 February 2023

Grand Total 275

Redwood Road



Uplands Avenue



Bromley Street



Alvaston Street



Thornhill Road



Church Street



**Week 18 – 275
contraventions**

**82.24%
reduction in
contraventions**

**Week 1 – 1549
contraventions**

Improving Road Safety and Reducing Congestion



Derby City Council



**% avg reduction of
vehicles accessing
Safe Haven School
Streets**

Year 1:

66%

Year 2:

79%

Year 3:

84%

School Safe Haven Zones Analysis trends To date



School Safe Haven Zones Today



Derby City Council



Active
Travel
England

With an increase in demand and interest for SSHZ's from schools and parents alike, DCC successfully bid for funding from Active Travel England to implement 6 additional locations



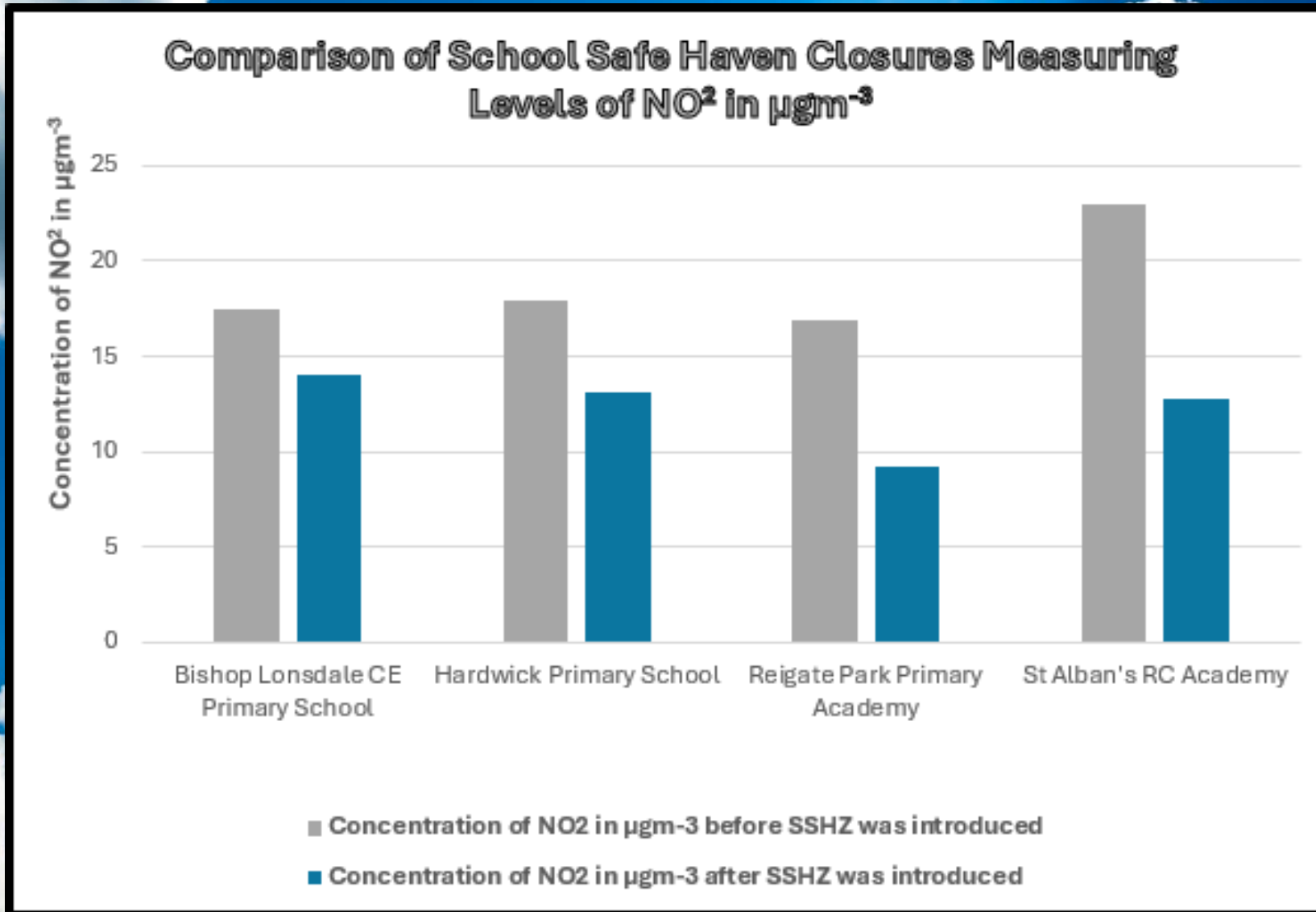


Air Quality Monitoring and Impact of School Safe Havens in Derby

Healthy Results



Derby City Council



cycladerby



School Safe Haven Zones



**cycle
derby**



**Turning Good
Into Great**



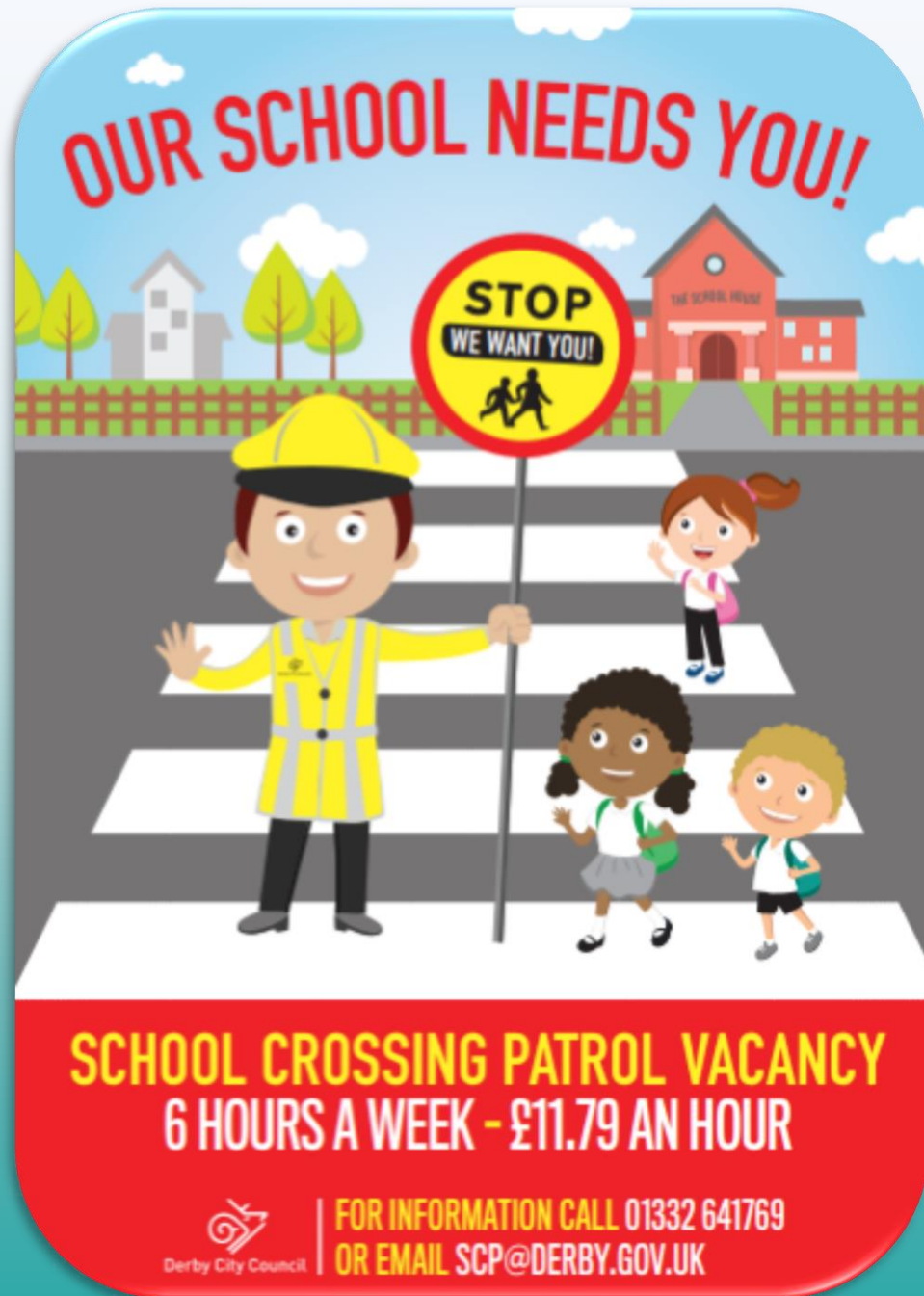
CycleSecure is here!

CCTV, lockers and secure access.
Join the CycleSecure scheme today!

derby.gov.uk/parking

CycleSecure





Army of 17 SCP's supporting the community funded via the SHOS/SSHZ initiative

- *Non-statutory service under yearly threat through budget cuts*
- *Posts underwritten and saved through SHOS/SSHZ initiative*
- *Active recruitment campaigns within the community*
- *Providing safer journeys to encourage a more active commute*

DfT Two Day Visit



‘Derby has a really impressive set up, and their focus on being proportionate with their approach was great because this is how these powers were meant to be used when they were introduced.’



Department
for Transport

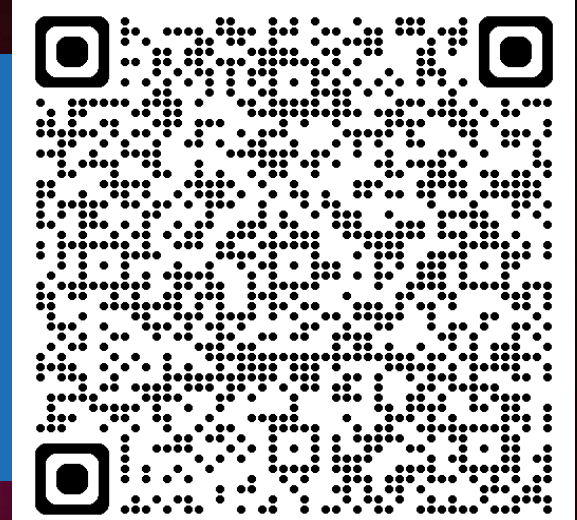


Derby City Council

Guidance

Camera enforcement of School Streets Derby City Council

Published 19 November 2024



Department
for Transport



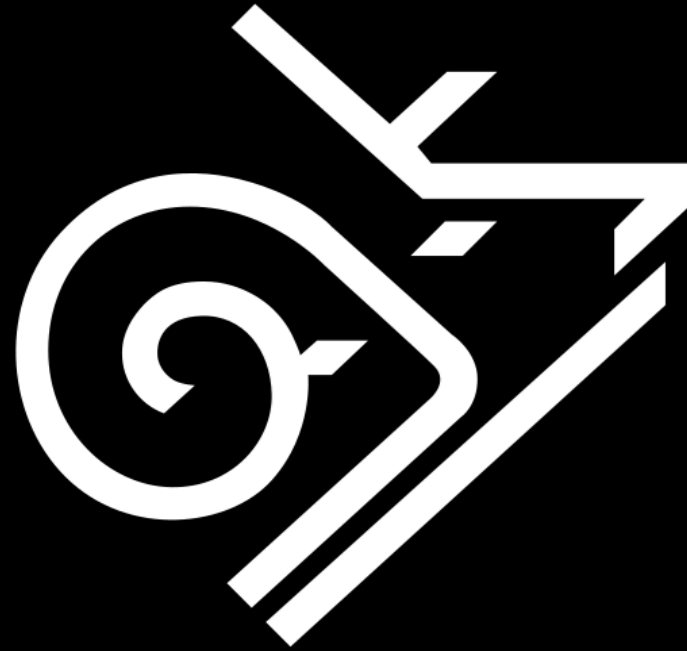
Active
Travel
England

Thank You



Derby City Council





Derby City Council