

APSE National Building and Housing Seminar 2025

“Embedding climate change in the services”

Phil Brennan, Head of APSE Energy.

March 2025

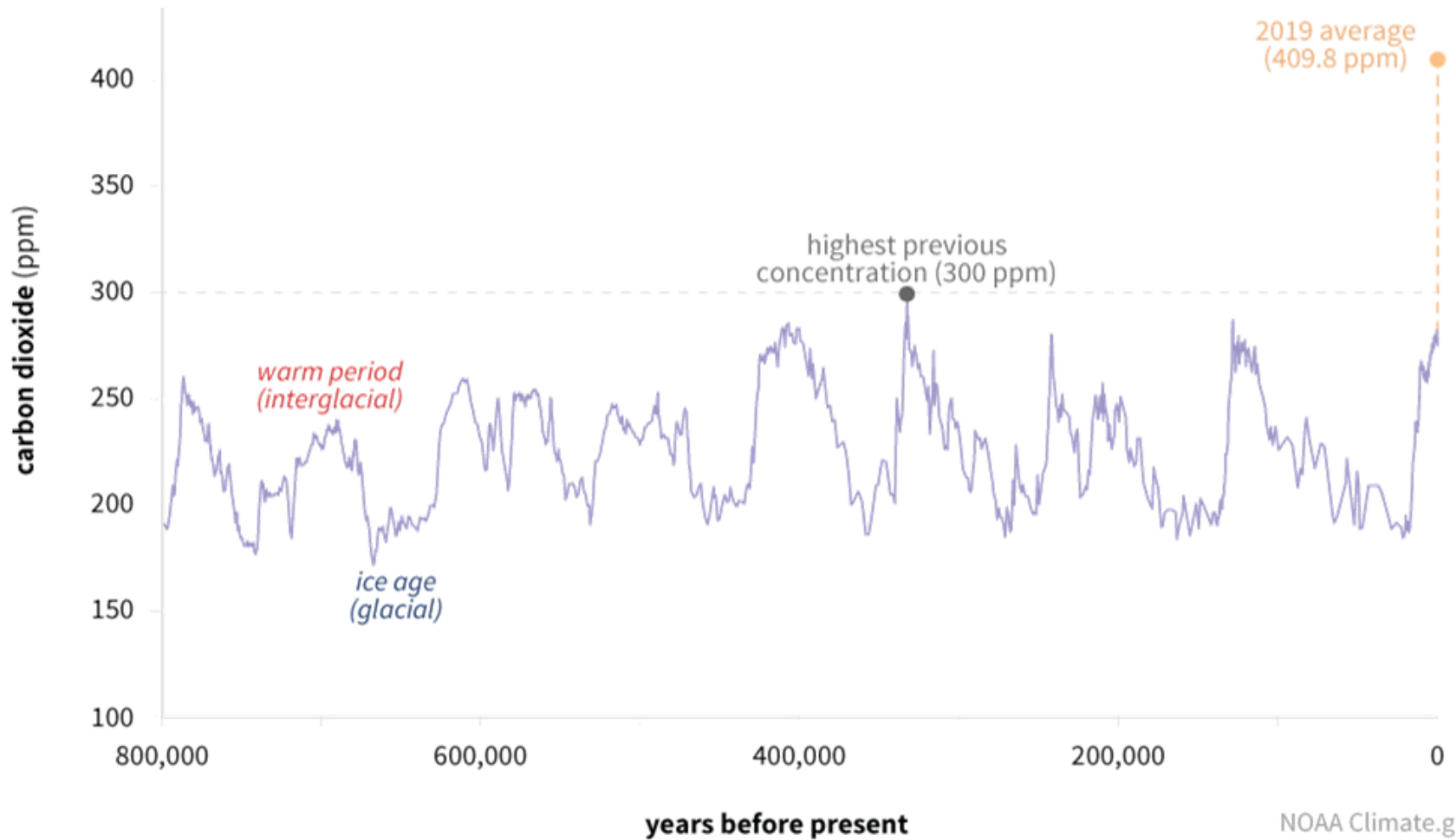
Embedding climate change in the services

What does that mean?

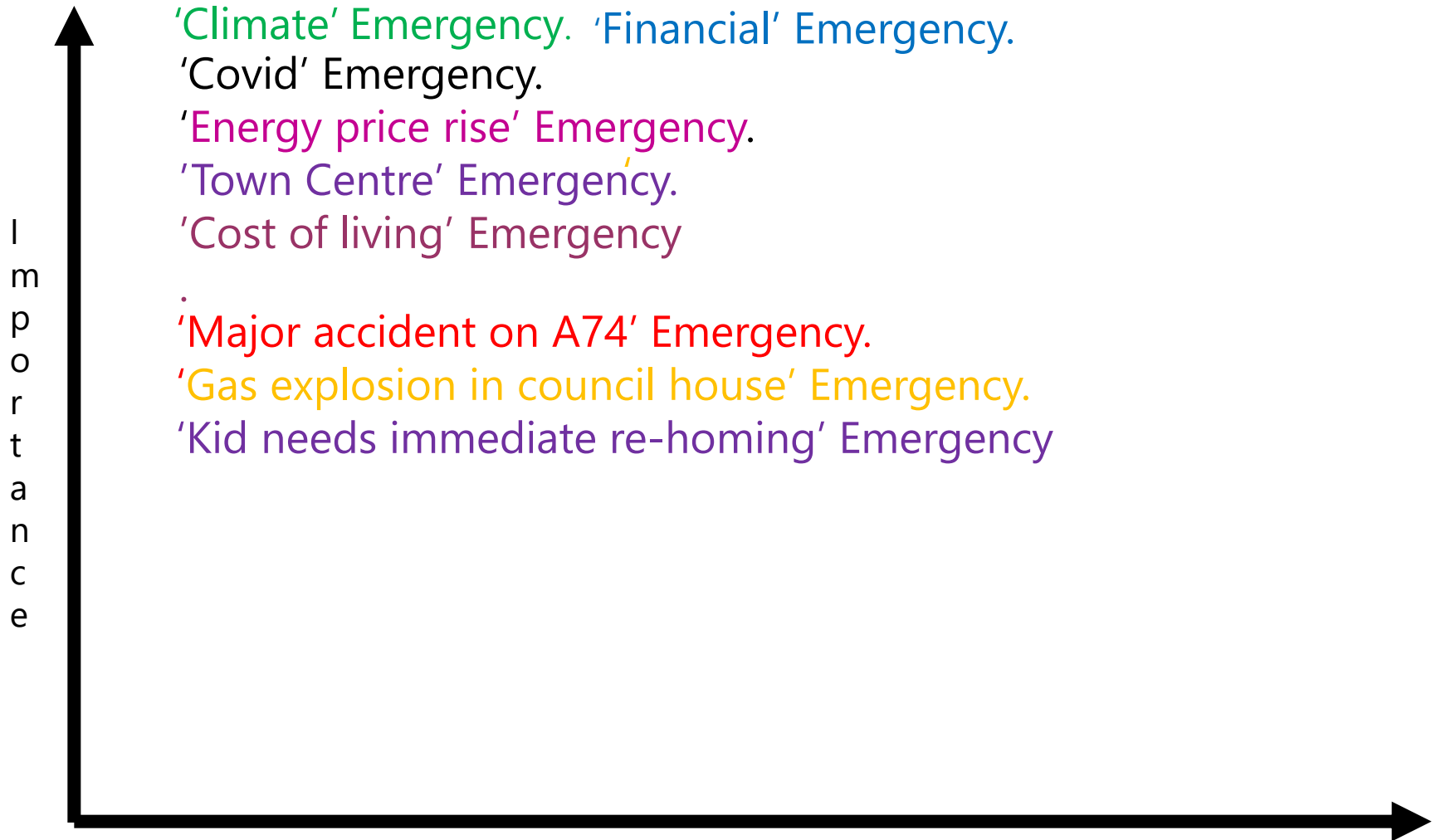
Why do it?

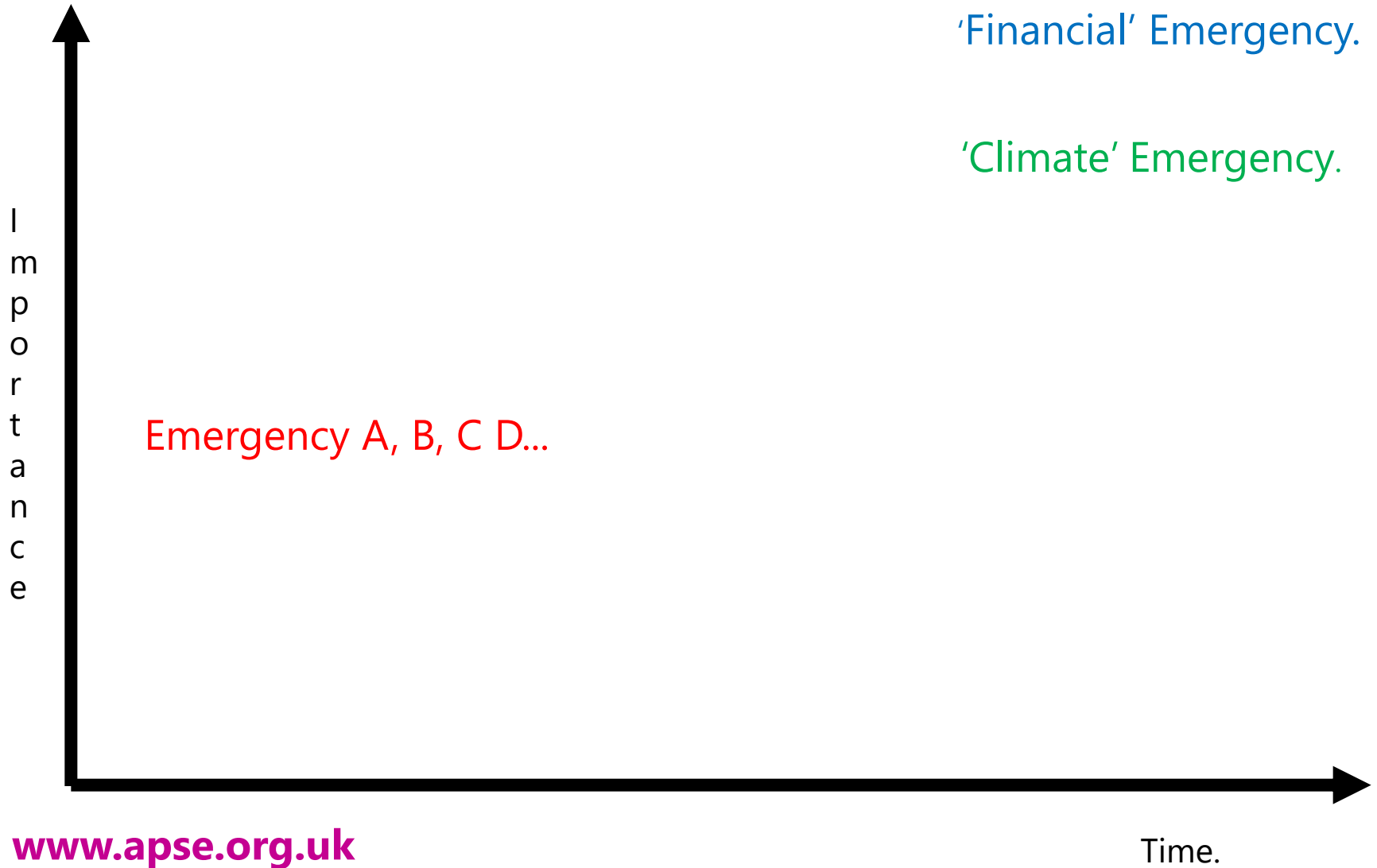
How do you do it?

It isn't easy...



NOAA Climate.gov
Data: NCEI

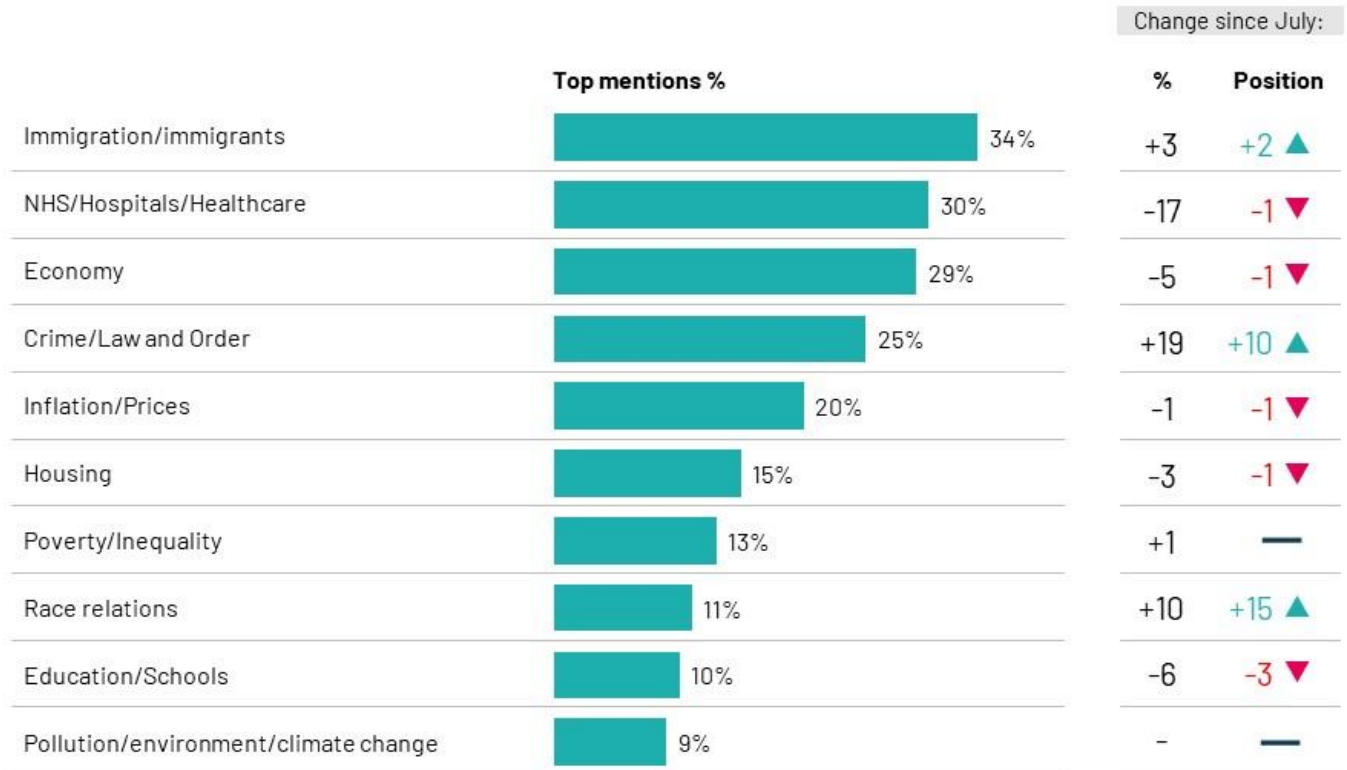




Public opinion - Are our priorities shared by the public?

August 2024

What do you see as the most/other important issues facing Britain today?



Base: 1,010 British adults 18+, 7 - 13 August 2024

So we need action within our local authorities and we need data to do it.

APSE Energy approach

1. Carbon Baseline
2. Trajectory to a net zero date
3. Energy audits for buildings
4. Build into action plans
5. Heat Decarbonisation Plans

Data is fundamental to all stages...

Assets – the obvious ones

- homes, civic/commercial buildings, land, vehicles

Less obvious

- people, knowledge, data, money, buying power, reputation, attitude

Asset example – West Suffolk Solar

Solar on 3rd party commercial properties

Business interest

Income generation

Council leadership

Asset example – Lancaster Salt Ayre

Leisure centre

LA's biggest emitter by far

Big investment in heat pumps, LEDs, fabric

Solar farm nearby

Circumstances re waste disposal site.

£6.8m Salix Finance.





Example – Gedling Corporate

Changes to Employee/Manager/Leader Standards to include climate in our behaviours - behavioural standards demonstrates commitment for all staff to be part of the journey.

A corporate 'Environmental Policy Statement'. demonstrate commitment to fulfil its ambitions in relation to zero carbon emissions and delivery of the Carbon management Strategy

New 'corporate Environment group' established. Chaired by Director responsible for Environment progress corporate actions & deliver carbon management strategy/AP with all Heads of Service

Carbon Literacy Training to members, Senior Leadership team, Heads of Service and Managers. Mandatory climate e- learning for all staff.

Inclusion of specific section in performance development reviews. All staff select a climate action they pledge to undertake over the year. Opportunity to suggest initiatives.

A Climate Impact Assessment mandatory for all proposals.

Example – Nottingham – car ports

Leisure centres

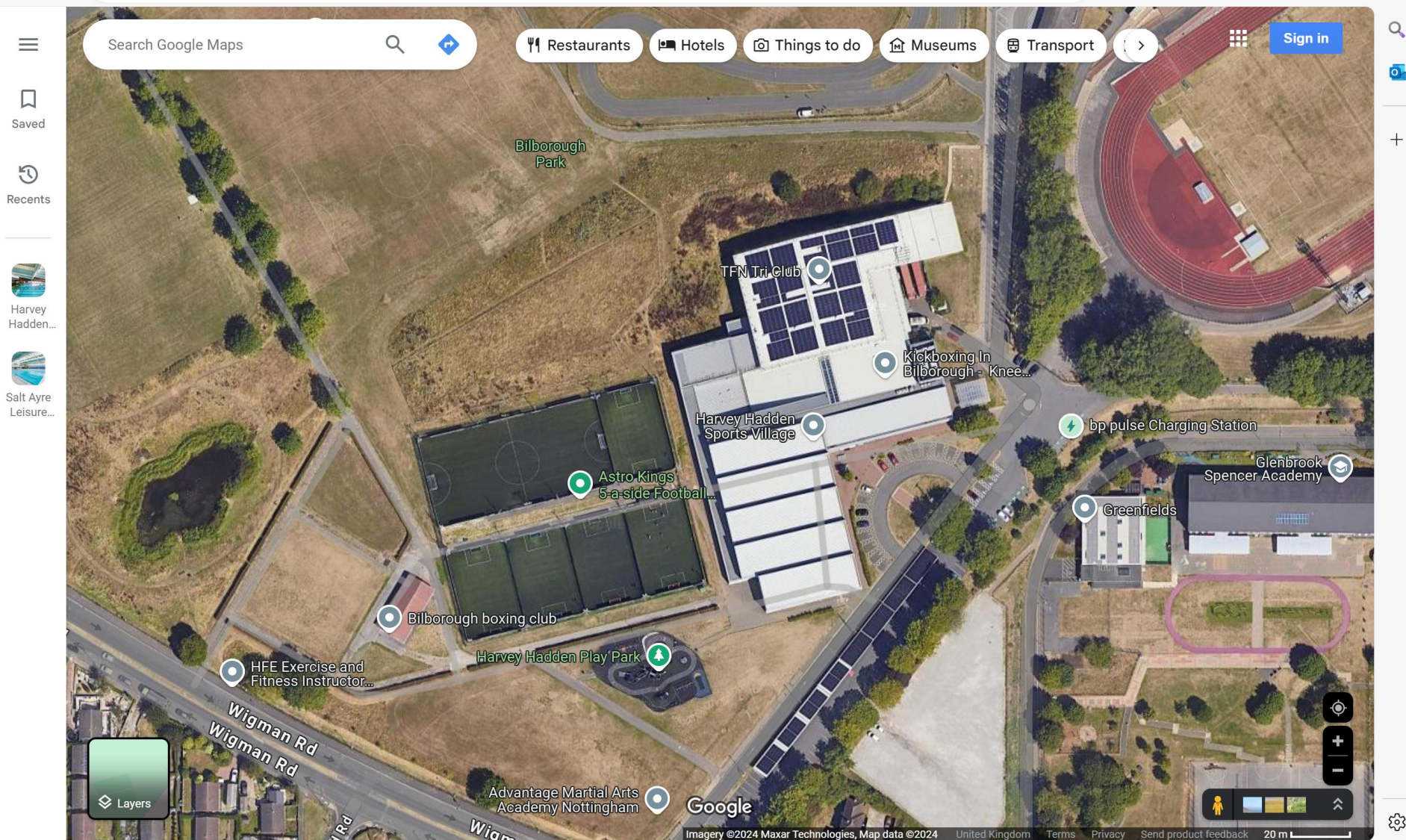
Energy used on site

Income from advertising

Leadership

Bi-directional EV chargers and battery at the depot.









Example – Cambridge and S Cambridgeshire Waste Fleet

45 RCVs producing 70% of Council's emissions.

Invested in 4 eRCVs.

20 RCVs using Hydrotreated Vegetable Oil (HVO).

Issues of grid capacity for EV chargers at the depot –
solar farm on adjacent land.

A long term plan.

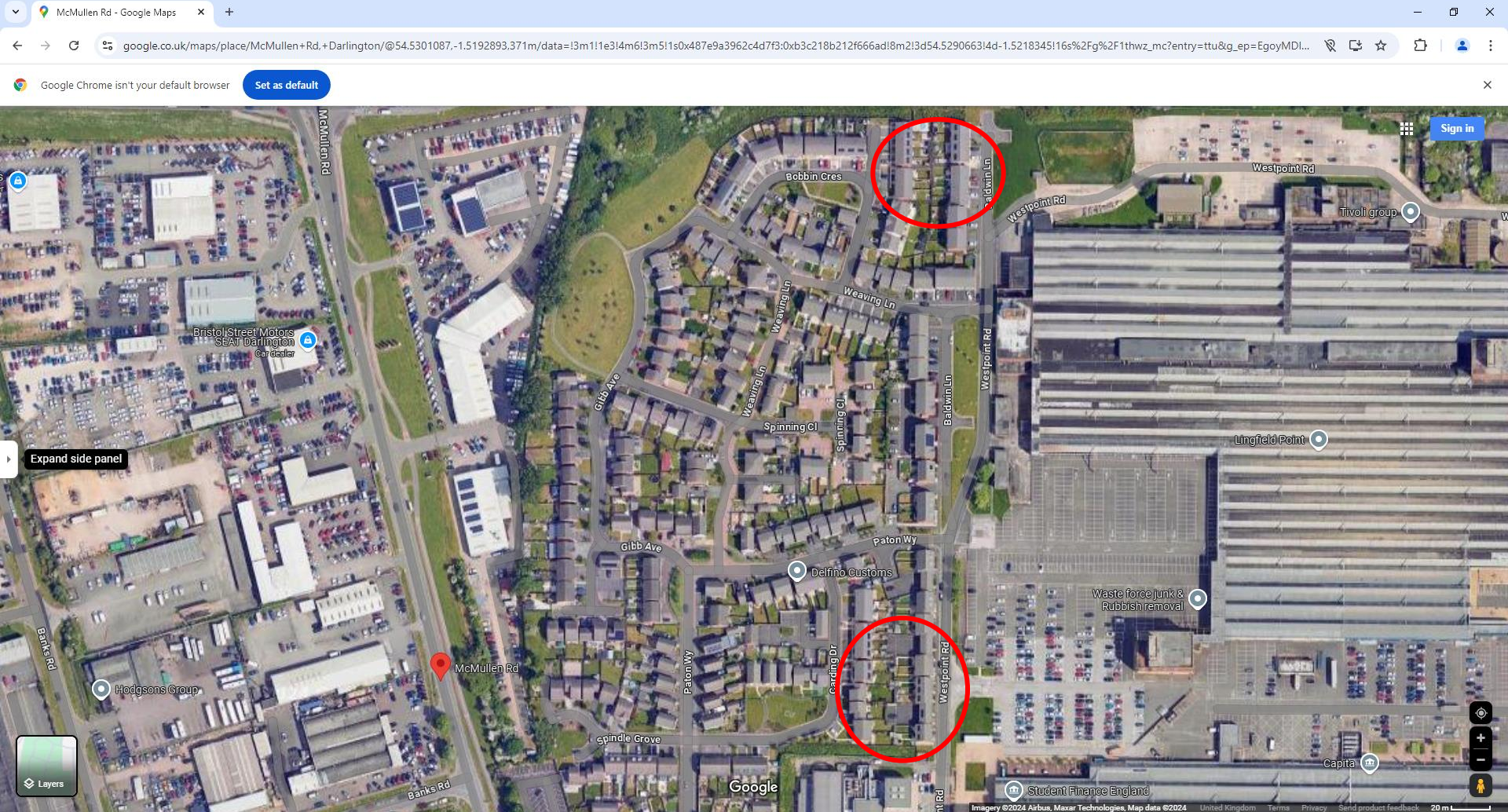


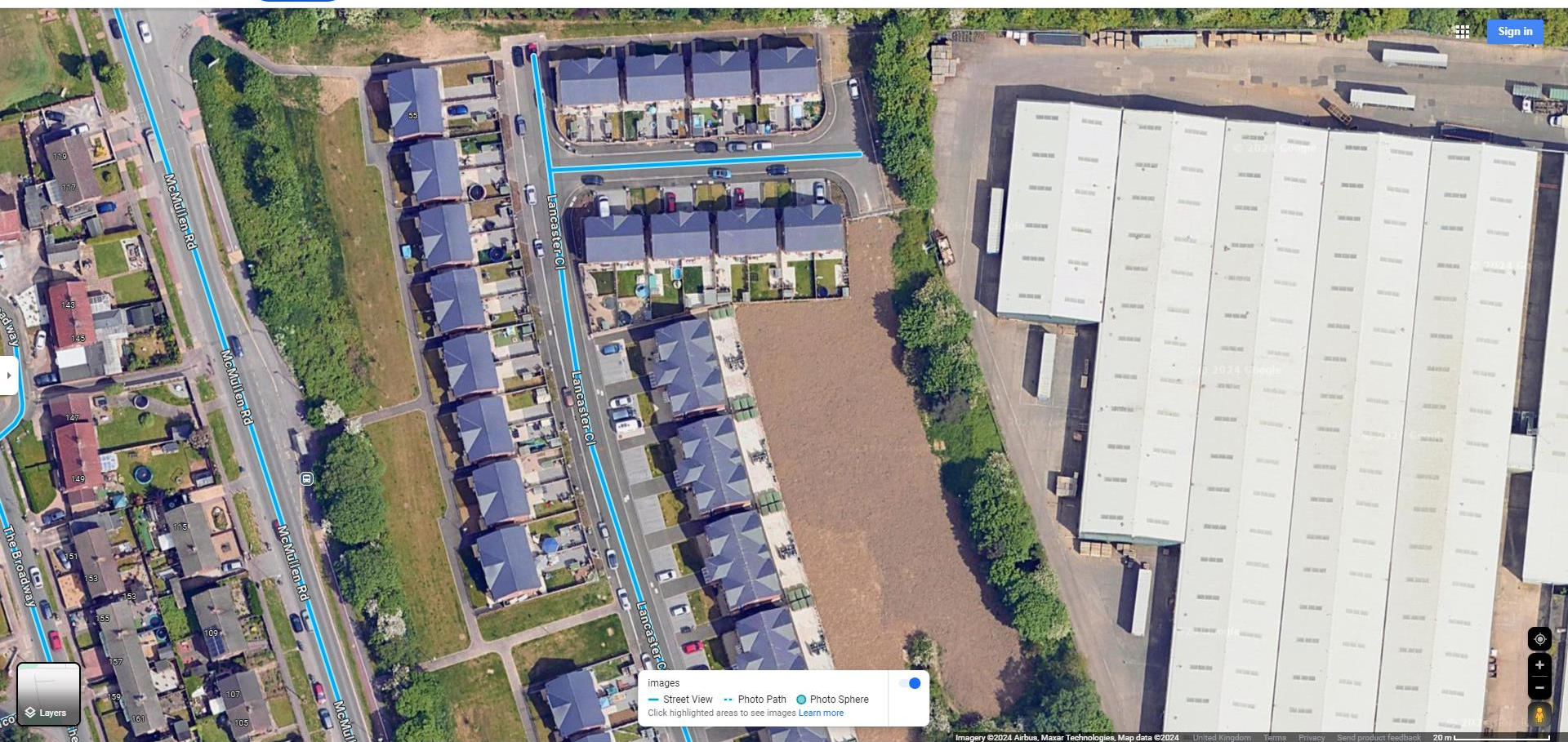
Proposed WREN site and Waterbeach depot.

Viability

New housing

Ideal opportunity – at build not retrofit





Knowes Housing Association – Clydebank **350 Solar PV & 105 External Wall Insulation**



Energy audits

- detailed site surveys
- existing condition and usage, emissions, problems
- options for decarbonisation
- estimate of costs of new investment
- estimate of new electricity demand
- estimate of emissions following new investment

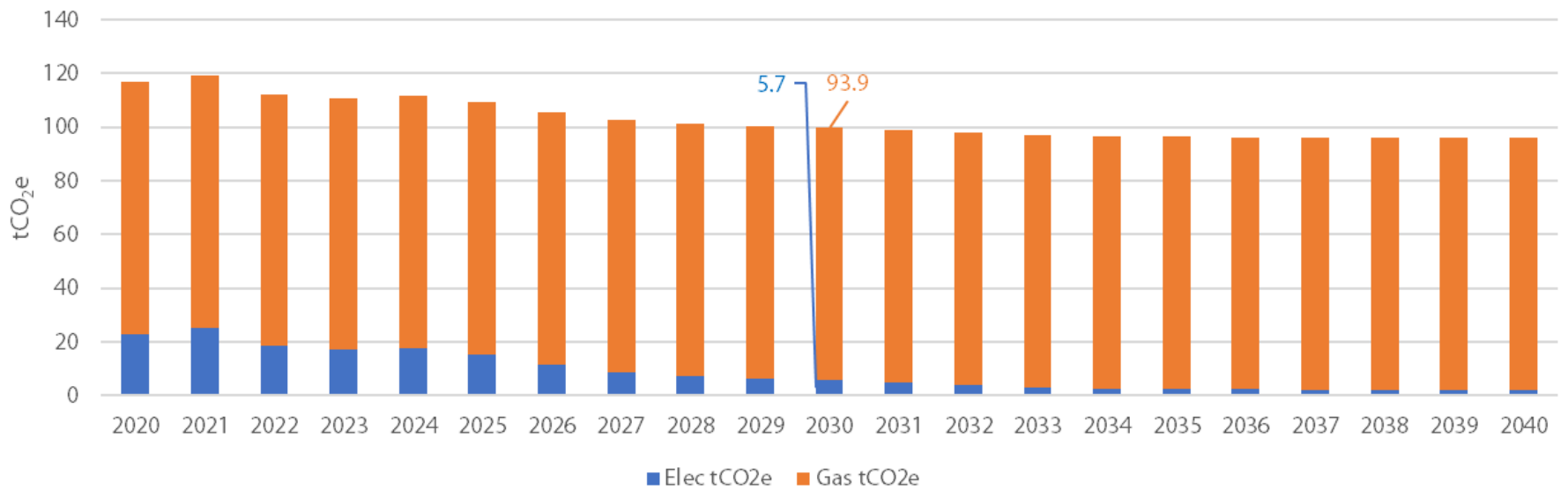
Costing Detail: ASHP



Item	Description	Costs
1	Preliminaries	£19,000
2	ASHP and Plant Room	
	Construction Compound	£79,000
	Heating Air Source Heat Pump(s)	£239,000
	Acoustic Attenuation	£29,000
	Buffer Vessel(s)	£8,000
	Heating Primary Pump(s)	£26,000
	Heating Secondary Pump(s)	£32,000
	Pressurisation Unit(s) & Expansion Vessel(s)	£5,000
	Plant Room Pipework, Valves, & Ancillaries	£55,000
	Automatic Controls, Control Panel & BMS	£60,000
	Electrical Works	£24,000
	Interconnecting Pipework to Plant Room	£10,000
	Builders' Work	£27,000

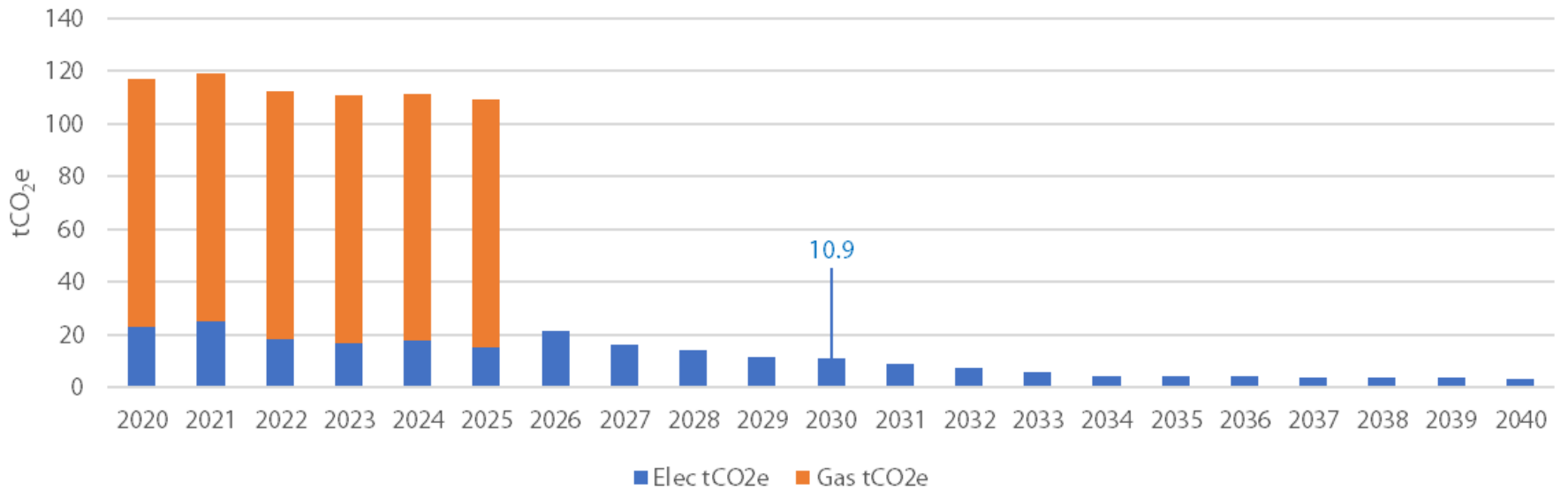
3	HEATING DISTRIBUTION	
	Removal of Existing Building Plant & Equipment	£27,000
	Heat Emitters (Radiators)	£32,000
	Distribution Pipework	£74,000
	New AHU Heating Coils	£20,000
	Heat Exchangers for Pools	£28,000
4	Upgrading Main Incoming Electrical Supply	£122,810
5	Testing & Commissioning	£10,000
	Demonstration & Training	£2,000
	Record Information	£3,500
6	Contingency Sum	£94,000
7	Works Budget Total	£1,026,310
8	Design Fees	£93,000
	Project Management Fees	£47,000
9	Project Budget Total	£1,166,310

Carbon Trajectory (tCO₂e): Business as Usual (BAU)



Recommendations – ASHP, LED lights, double glazing.

Carbon Trajectory (tCO₂e): Air Source Heat Pump



Help! I need somebody...

Ask APSE Energy

Contact details

Phil Brennan, Head of APSE Energy

Email: pbrennan@apse.org.uk

Association for Public Service Excellence

3rd floor, Trafford House, Chester Road,
Old Trafford, Manchester M32 0RS.

telephone: 0161 772 1810

web: www.apse.org.uk



GB 11409



GB 11132



GB 14074