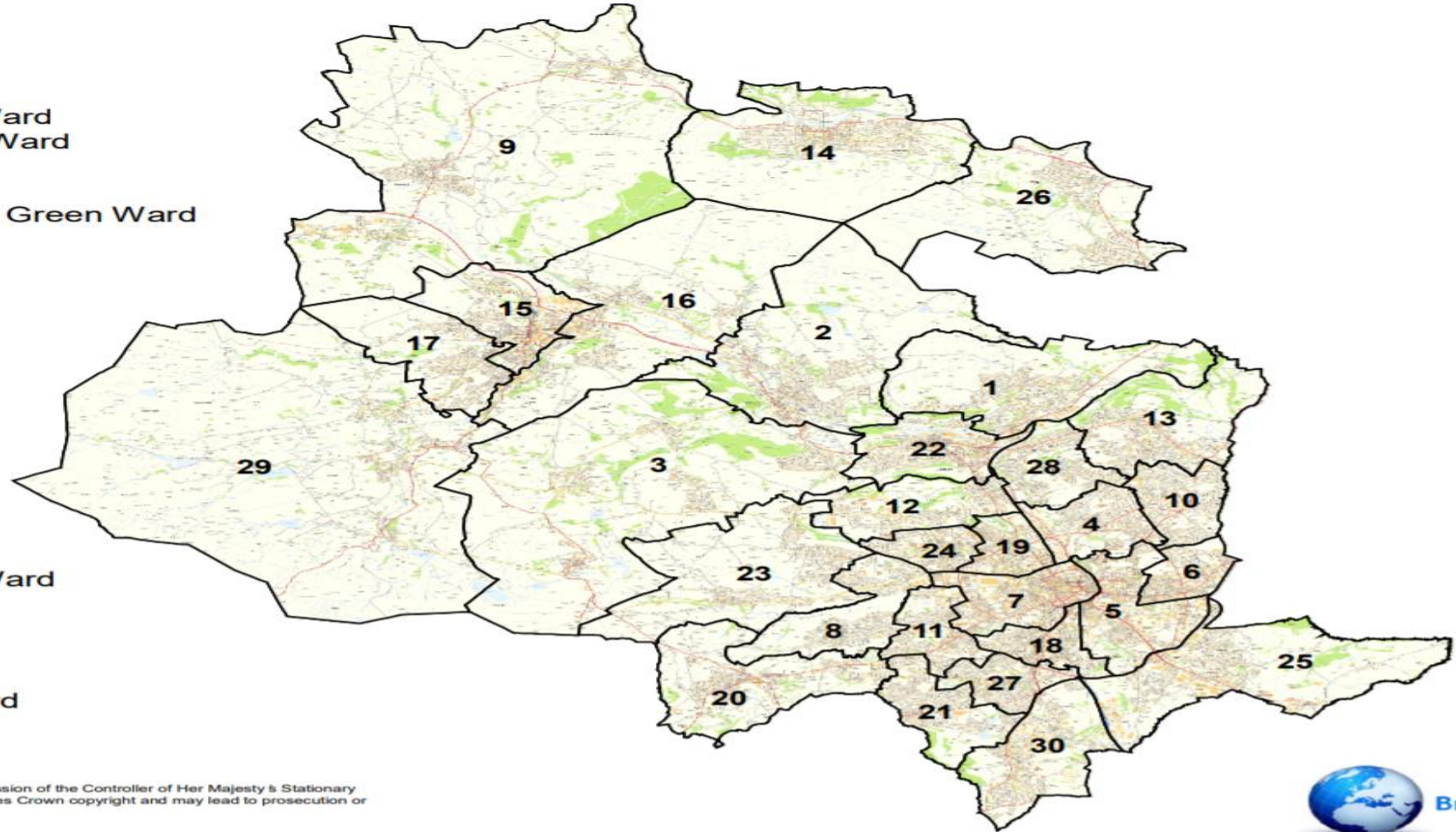




*City of*  
**BRADFORD**  
METROPOLITAN DISTRICT COUNCIL

- No Ward
- 1 Baildon Ward
  - 2 Bingley Ward
  - 3 Bingley Rural Ward
  - 4 Bolton and Undercliffe Ward
  - 5 Bowling and Barkerend Ward
  - 6 Bradford Moor Ward
  - 7 City Ward
  - 8 Clayton and Fairweather Green Ward
  - 9 Craven Ward
  - 10 Eccleshill Ward
  - 11 Great Horton Ward
  - 12 Heaton Ward
  - 13 Idle and Thackley Ward
  - 14 Ilkley Ward
  - 15 Keighley Central Ward
  - 16 Keighley East Ward
  - 17 Keighley West Ward
  - 18 Little Horton Ward
  - 19 Manningham Ward
  - 20 Queensbury Ward
  - 21 Royds Ward
  - 22 Shipley Ward
  - 23 Thornton and Allerton Ward
  - 24 Toller Ward
  - 25 Tong Ward
  - 26 Wharfedale Ward
  - 27 Wibsey Ward
  - 28 Windhill and Wrose Ward
  - 29 Worth Valley Ward
  - 30 Wyke Ward

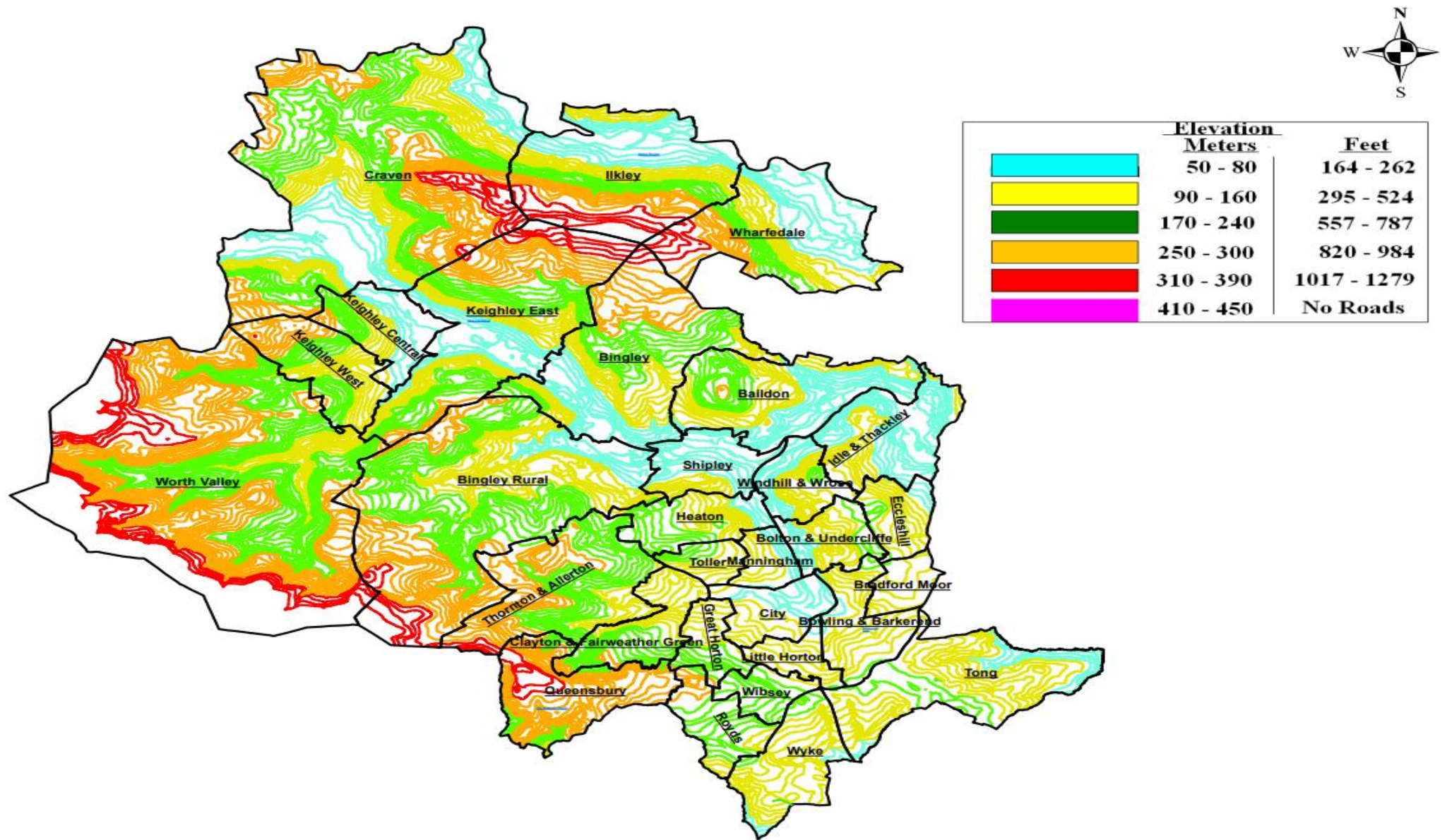


Based upon the Ordnance Survey mapping with the permission of the Controller of Her Majesty's Stationary Office Crown copyright. Unauthorised reproduction infringes Crown copyright and may lead to prosecution or civil proceedings.  
City of Bradford Metropolitan District Council 100019304  
2012



Bradford operates one of the largest Winter Maintenance operations in the UK for a Metropolitan District Council – Bradford District is 141 square miles





Queensbury is one of the highest Parishes in England at an altitude of over 1,100ft above sea level in comparison to Bradford City Centre at 325ft – In Bradford North Oakworth is over 800ft compared to Keighley town centre 271ft

# How does City of Bradford Metropolitan District Council spend your money?



This is how each £100 is spent...



## Where does this money come from?

Councils get funding from a variety of sources including money from central government grants and other grants for specific purposes like infrastructure, fees and charges like car parking and from borrowing and investments, business rates and your council tax.

Figures compiled by the Local Government Information Unit (lgiu.org) using Revenue Account budget data from the Department for Levelling Up, Housing and Communities (21/22). This does not include other aspects of council spending such as capital investment or council housing, and figures have been rounded.

2022

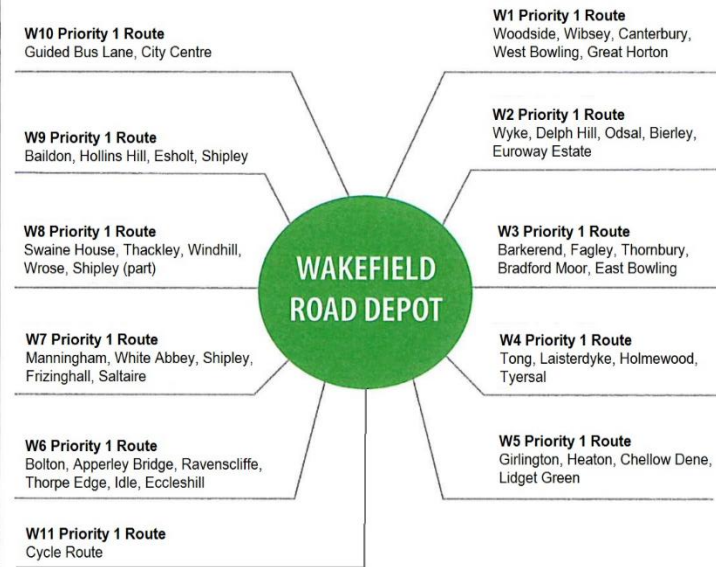
Calderdale Council £2.12, Kirklees £1.54, Leeds £1.79, Wakefield £2.78



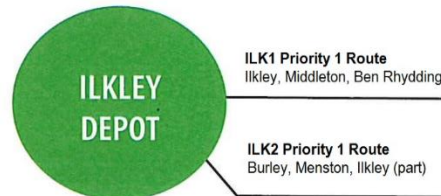


We use In-house drivers from Highway Delivery Unit, Cleansing, Parks & Landscapes Departments to save costs

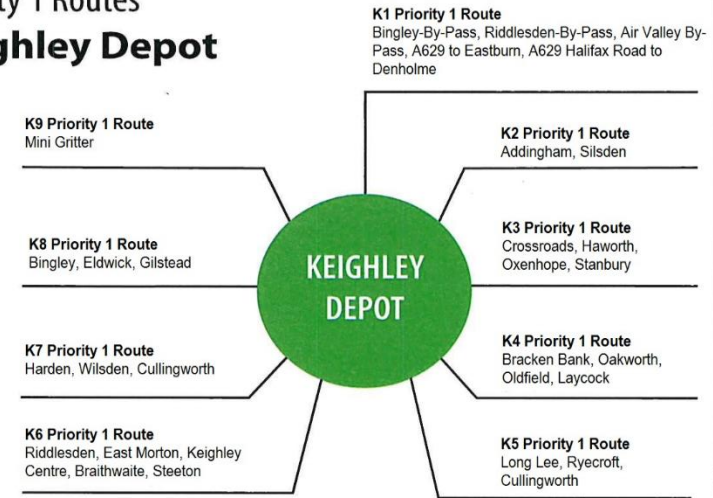
## Priority 1 Routes Wakefield Road Depot



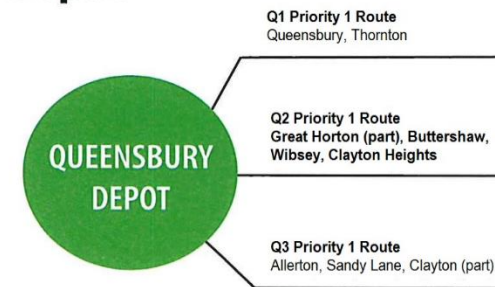
## Priority 1 Routes Ilkley Depot

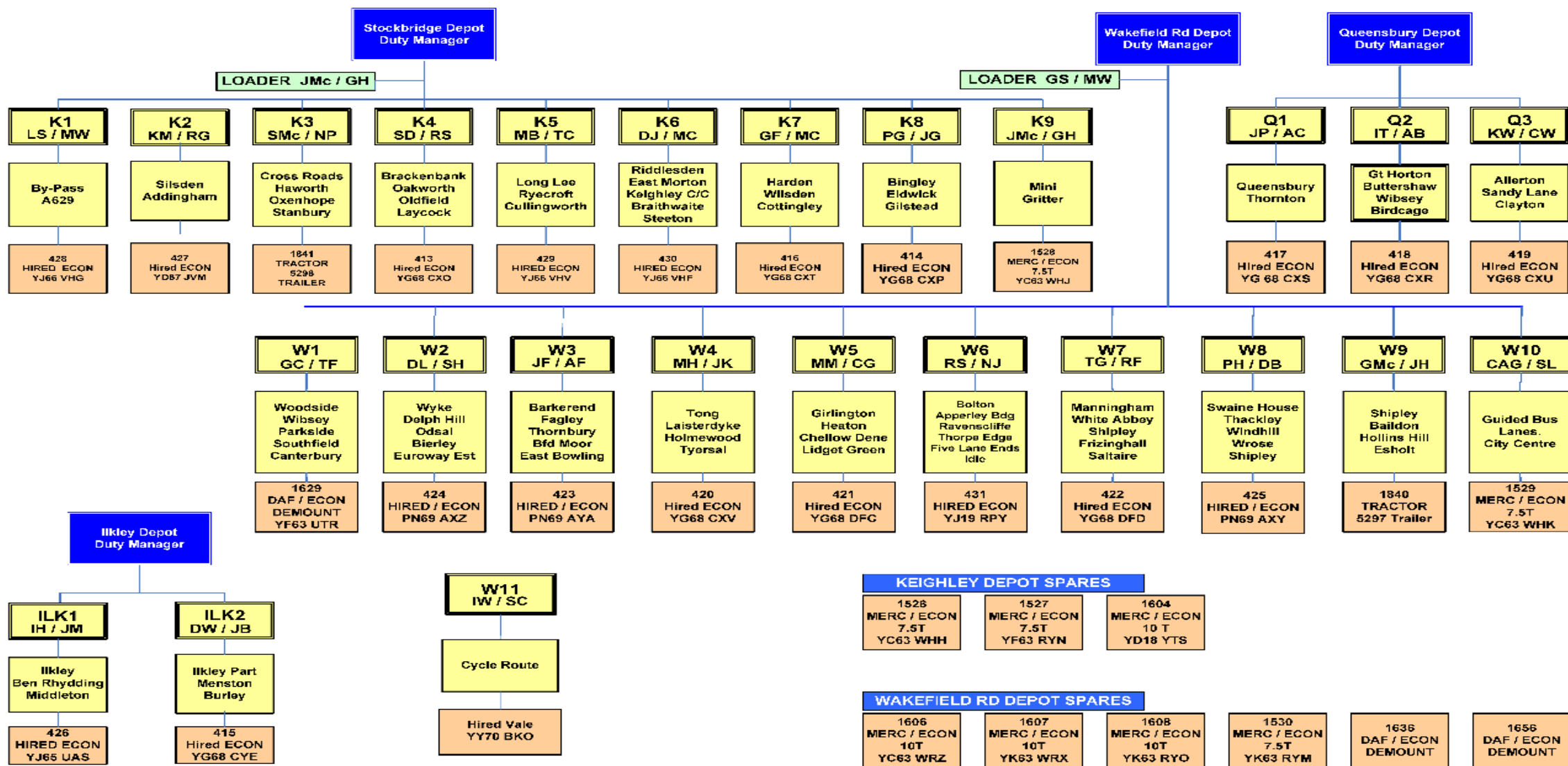


## Priority 1 Routes Keighley Depot



## Priority 1 Routes Queensbury Depot





Priority 1 routes - 24 routes covering approximately 712 miles of the highway network representing a treatment proportion of 62%

Priority 2 routes – side roads, local community access to main roads





Priority 3 routes – Plough routes, rings roads, main routes for emergency services





Priority 4 routes – Night patrol (external contractors), patrols/treats highways on high ground overnight. Keeping management up to date with conditions, allows sufficient rest periods for CBMDC staff





## FOOTWAY/CYCLE GRITTING

Priority 1F – Seven routes in total which are treated in the city and town centres which are pedestrian areas, busy urban shopping and business areas, transport interchanges, public buildings and outside St Luke's, Bradford Royal Infirmary (BRI) and Airedale hospital at Keighley. These footways are treated during periods of prolonged frost and ice or snow events. Parks & Landscapes are the main resource behind this function of the operation.

VALE Liquid De-icer/Snowbrush Mini-Tractor Combi solution designed specifically for cycleways!





## Graphs and Tables

Graphs

Show tables:

Observations

Next 36 hours

Next 8 days

Next 15 days

[View vertically](#)

	Thu	Fri, 10	Sat, 11	Sun, 12	Mon, 13	Tue, 14	Wed, 15	Thu, 16	Fri, 17	Sat, 18	Sun, 19	Mon, 20	Tue, 21	Wed, 22	Thu, 23	Fri
	18	06	18	06	18	06	18	06	18	06	18	06	18	06	18	06
<b>A644 Queensbury</b>																
Worst road condition																
Lowest surface temperature (°C)	12	13	12	13	12	13	11	12	13	14	13	14	13	14	13	14
Highest surface temperature (°C)	22	31	29	31	27	28	24	22	28	25	30	26	31	26	29	25
Snowfall (cm)										0.0						
Snowfall altitude (km)	2.3	1.8	1.7	1.8	1.6	1.4	1.8	1.7	2.1	2.0	2.1	2.2	2.6	3.2	3.1	3.3
Precipitation probability (%)	0	10	20		15			20		25	35	30	35	30	20	
Precipitation (mm)	0.0		0.1	<0.1				0.0		0.1	0.3	0.5	0.8	2.8	0.3	1.8
Air temperature min. (°C)		11		10	8.8	9.1	9.3	9.4	10		11		10		12	10
Air temperature max. (°C)	14	18	17	16	15	13		14	15		14		17		16	14
Cloud cover (okta)																
Wind speed (mph)	14	16	17	19	16	15	14	9.6	10	9.2	11	12	14	12	14	13
Wind direction																
Wind gusts (mph)	24	30	29	35	33	32	31	25	23	22	20	22	28	29	25	24

Icon Explanation

Colour Explanation

Since the winter of 2017/18 Bradford Council as part of the West Yorkshire Combined Authority, has contracted MeteoGroup and Vaisala Weather Bureau to provide weather information and forecasting to the authority on a daily basis during the winter risk period.



Weather forecasting for the district is monitored from 2 dedicated weather stations located at Queensbury and Silsden which feed road surface temperatures to the Vaisala Weather Bureau. Weather information for MeteoGroup is also gathered from these 2 Stations along with their own weather forecasting models. As part of the improvements following the 2017-18 season further upgrades have been made to these weather stations to incorporate CCTV cameras to allow visual confirmation of data provided from these stations





Near 600 grit bins across the highway network, criteria introduced to manage expectations. During the Winter of 2017-18 the Council introduced a Community Grit bin scheme. This scheme allowed several Town Councils to purchase grit bins with rock salt from the Council at a cost of £100. Refills are charged at £50.

LOCATION-OF-SALT-BIN	DATE-OF-ASSESSMENT	ASSESSED-BY	
CHARACTERISTIC	SEVERITY	POINT	ASSESSED- ACTUAL-POINT
1)→ Carriageway-Gradient	Greater-than-1-in-10	75	
	1-in-10-to-1-in-30	40	
	Less-than-1-in-30	NIL	
2)→ Altitude	Land-over-700ft	75	
	Land-over-500ft	50	
	Land-between-250-500ft	25	
3)→ Distance-to-next-grit-bin	Less-than-200m	0	
	200m-to-400m	15	
	More-than-400m	20	
4)→ Close-proximity-to-and-falling-towards-and-away-from-junctions	Heavily-trafficked-road	80	
	Moderately-trafficked-road	60	
	Lightly-trafficked-road	30	
	Not-falling	NIL	
5)→ Number-of-premises-for-which-this-is-the-only-access	Over-100	30	
	50-100	20	
	20-50	10	
	0-20	NIL	
6)→ High-Traffic/Strategic-General-location-and-High-pedestrian-movements	School-or-community-centres	25	
	Designated-old-persons-accommodation	25	
	Clinics-or-doctors-surgeries	25	
7)→ Road-Priority	On-priority-1-Main-Road-Gritting-Route	-50	
	On-Priority-2-Side-Road-Gritting-Route	-50	
		TOTAL	This-needs-to-be-over-125-to-pass

Dear Ms Hinchcliffe

Thanks for your prompt response and signing posting the issues to the appropriate officer. Attached photo as a proof of the service received .

I was amazed by Mr Naylor such a down to earth person , the inside problem and solution he had under his sleeves were mind blowing and I agreed to whatever he informed me and the other neighbours of Baptist court.

I have lived in this country for 18 years and out of these 6 years at Baptist unaware of the grit request and the how it works.

Thanks to you Ms Hinchcliffe for your support to our neighbourhood where any issue that of vital important to the community is always addressed.





What are the issues we face?



Public awareness -  
Who changes to  
Winter tyres? Sets  
off early/walks to  
school/work?



Standing traffic, if traffic isn't moving neither are  
the gritting wagons



Parked vehicles blocking access



Street furniture blocking access for footway  
gritting





Increase in demand – vaccination centres/new housing developments/grit bins



Lack of help - What do you do when it snows?



Ageing workforce, lack of motivation, supermarkets pay more, unsociable hours



Less snow, more pressure on decision makers



## The Future?



Road surface temperatures



Salt Barn – quality, costs



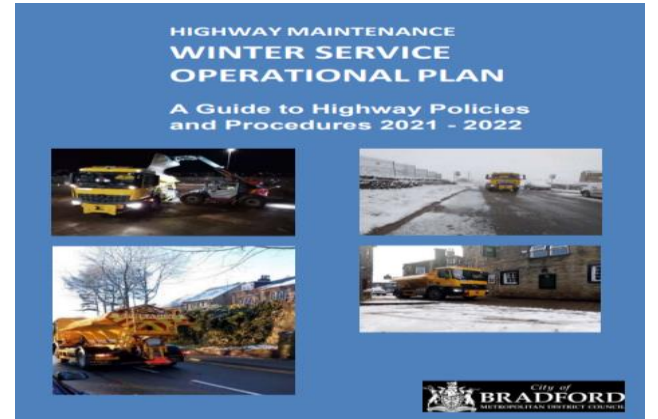
Electric Gritting fleet, environment



Create younger workforce, 3 apprentices started in August 2022



Work more with internal/external depts



Improve communication



## Winter Maintenance Review 2022-23





# Are we ready?

- 1. Do you feel that your Service is ready for Winter?**
- 2. What are your biggest risks going into winter and how do you remove/mitigate these risks?**
- 3. Can anything further be done to assist you in reducing/mitigating these risks, and by whom?**
- 4. Are there any resources you have available to you which may be beneficial during some type of winter response? (Extra drivers, vehicles, equipment etc...?)**
- 5. Do you feel that holding a meeting (Teams or physical) with other internal Services would be beneficial?**