

SPACE & PLACE

Nic Bryant

St.Sidwell's Point, Exeter : The UK's first Passivhaus certified
Swimming Pool & Sports Centre.

Inclusive access to swimming = flexibility

Consultation

Individual users.
Group users.
Non-users.

Operations

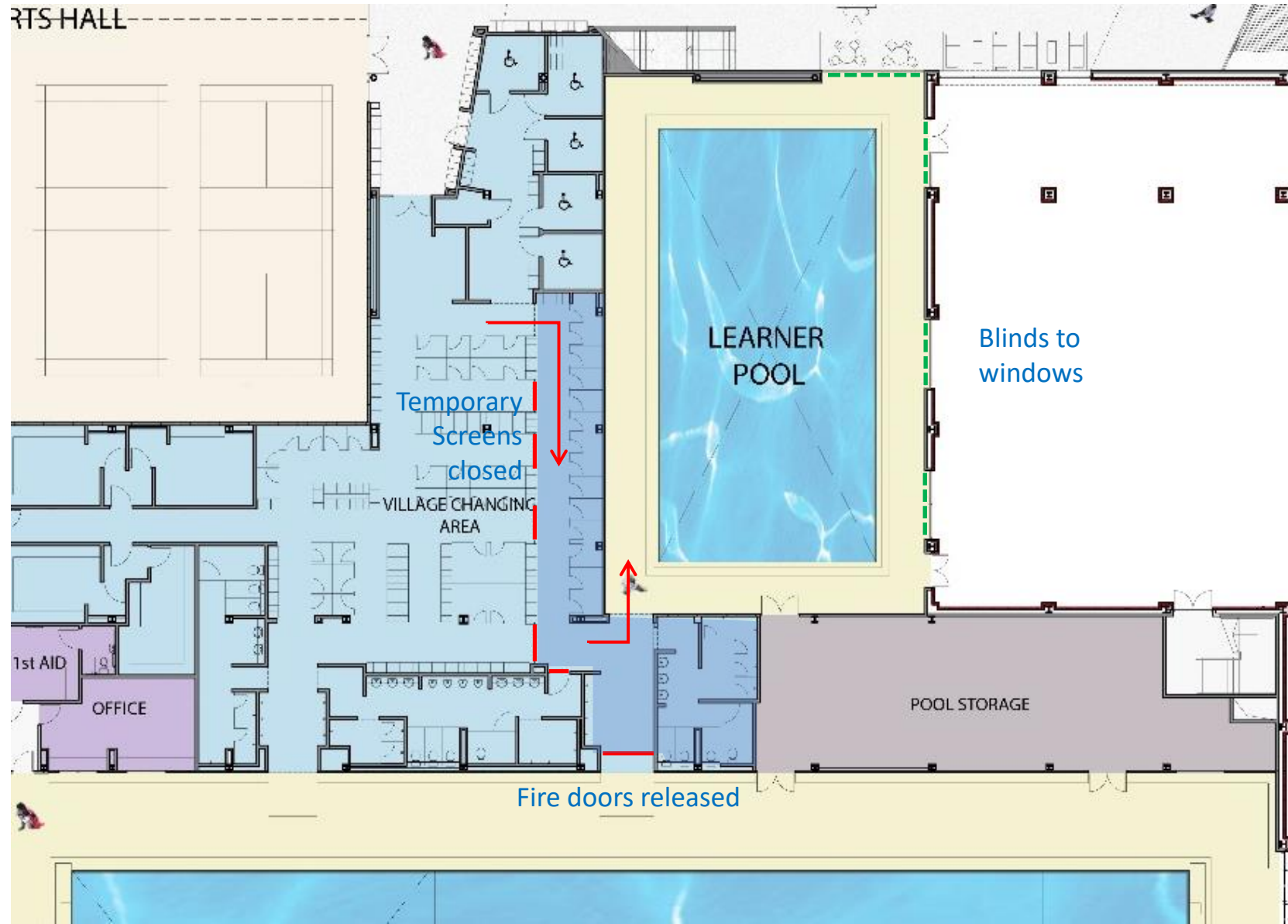
Experiences/daily feedback.
Programming.

Flexibility

Developing new facilities.
Existing facilities.

Inspire, Luton Sports Village

A large regional centre with 50m pool & 20m community pool.



Cozenten Park Sports Centre Rainham

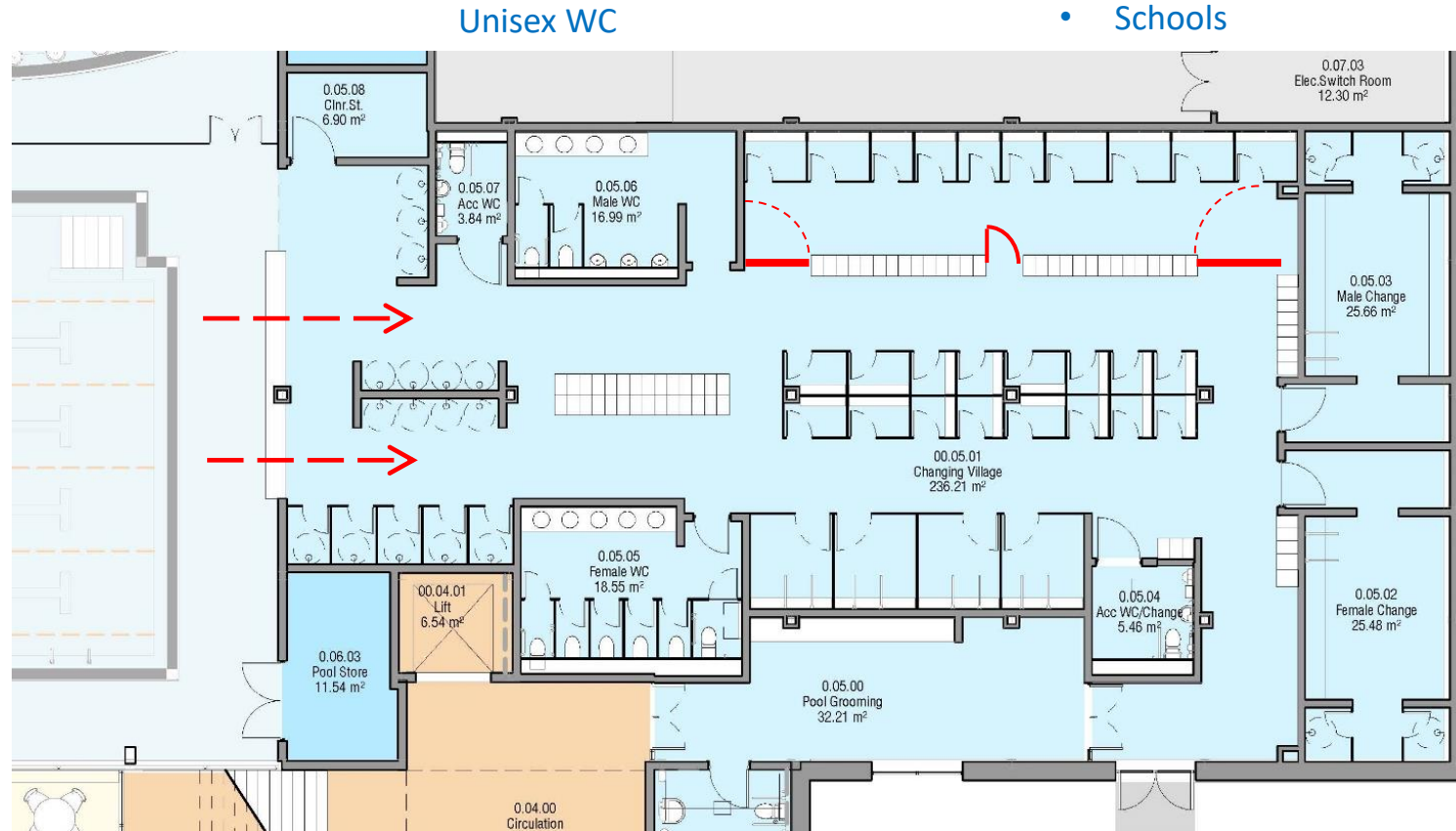
A small community pool and gym

Controlled access cubicle changing

- Single sex
- Children's Parties
- Schools

Views into changing room from pool.
Casual surveillance.

Unisex private
shower cubicles



Group changing rooms
with showers

- Single sex
- Teams
- Schools
- Gym change

Fully accessible
family cubicles

Mid size Swimming Centre

A small competition pool and gym

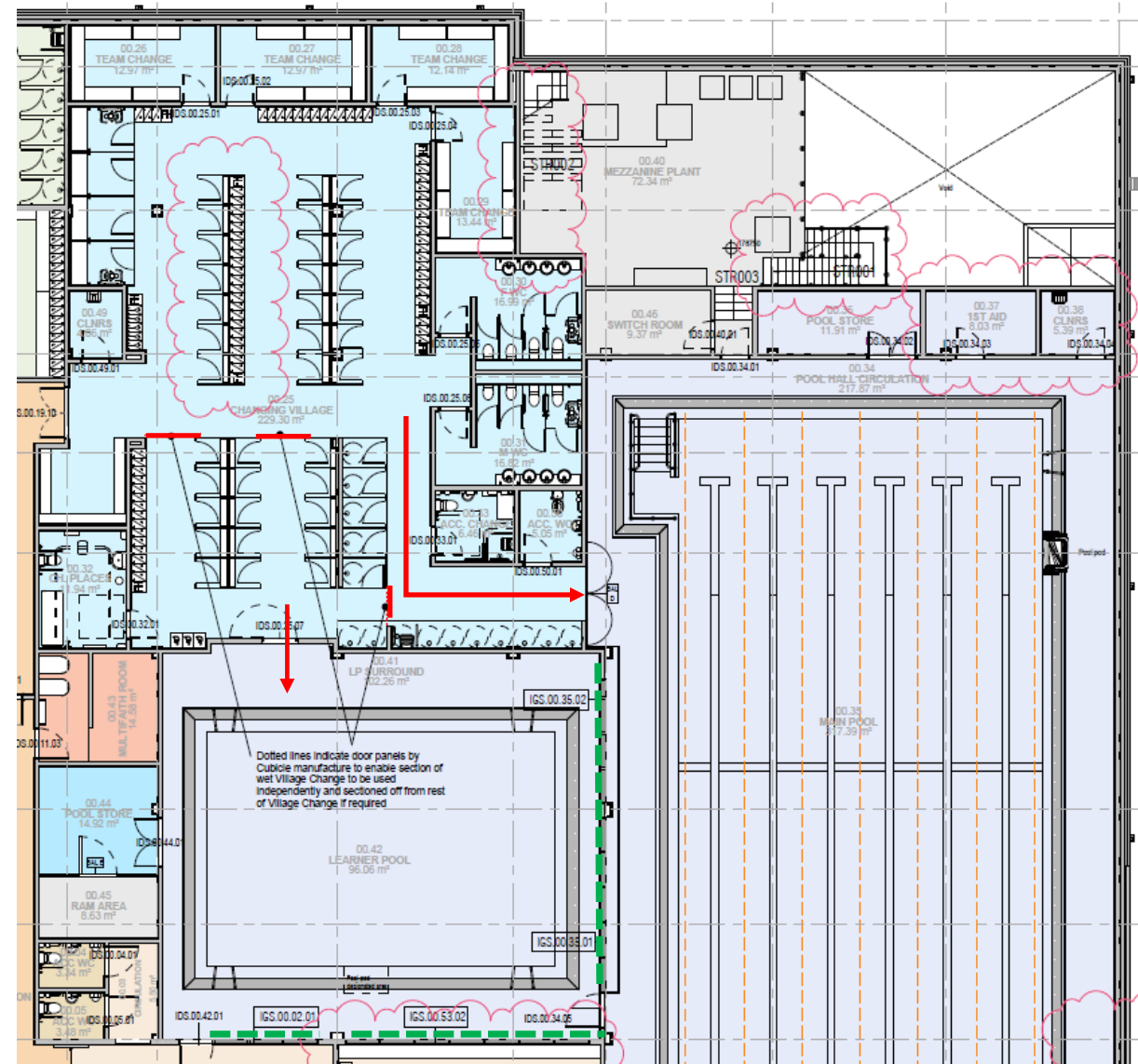


Controlled access cubicle changing & showers.

- Single sex.
- Children's Parties.
- Schools.



Private flexible pool with moveable floor to vary depth.



6-lane 25m pool with easy access stairs & pool pod.

Blinds to windows

Toilets & Showers

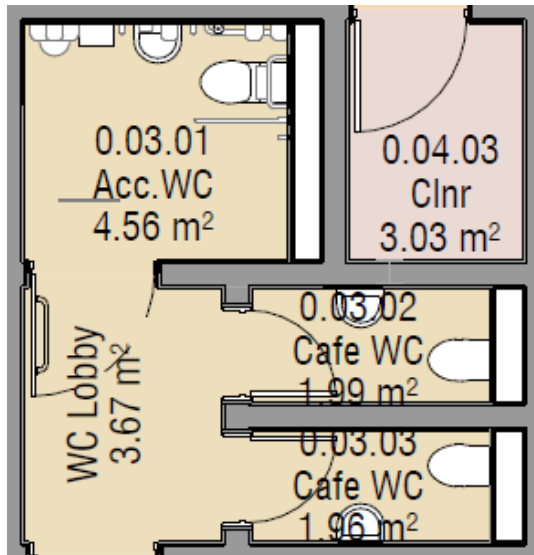
Changes to Building Regulations.

Full height toilet 'walls'.

Gender neutral toilets with WHB?

Increase in size and building area(£)?

Integrated shower/change cubicles?



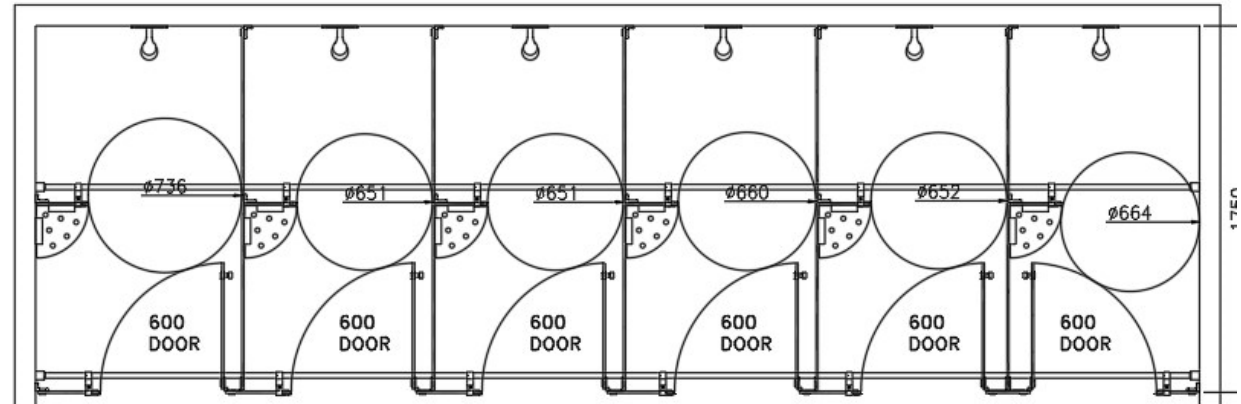
'Normal' cubicle = 1.45m²

'Combined' WC = 1.96m²

'Preferred' = 2.8m²



Building Regulations require WC cubicles to be full height to front and dividing walls including for single sex facilities.



Combined shower/change cubicles = 1.6m².

'Traditional' shower cubicles = 1.0-1.2m².

Changing Village

Always gender neutral?



Dividing panels extended to reduce photographs risk between cubicles.



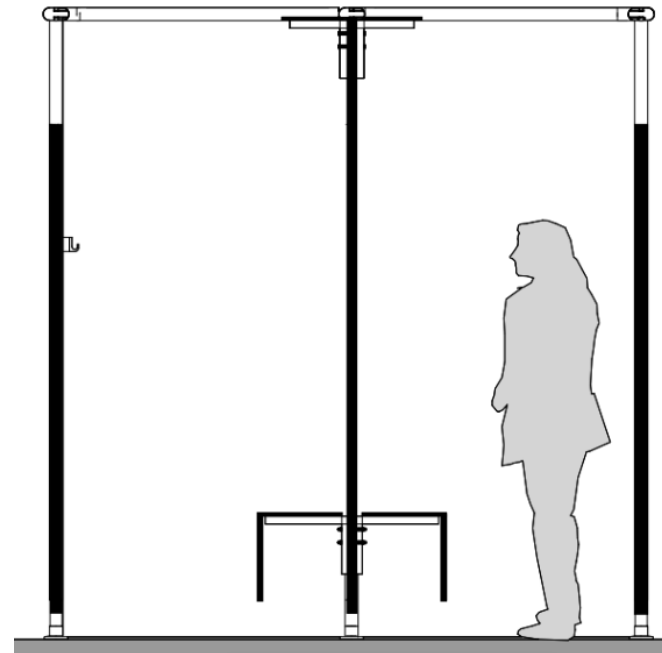
Front panels extended down to the floor.



Thanks to Prospect for use of their images and thoughts on how the market is developing.

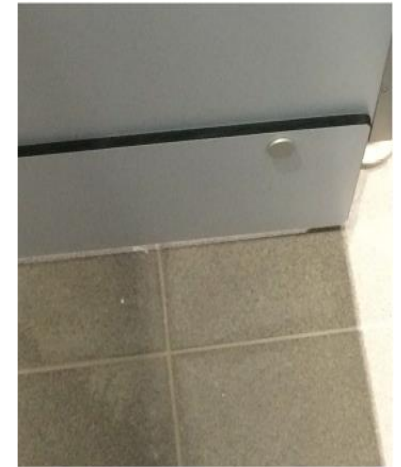
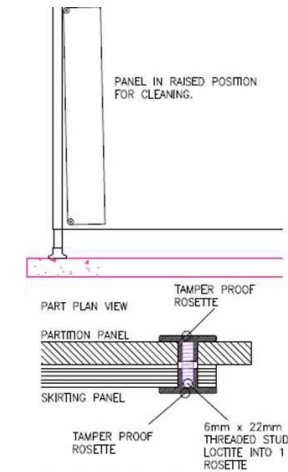


Overhead rails no longer sufficient?



2.4m high cubicles.

Hinged skirt to changing cubicles suitable for new & existing cubicles.



SPACE & PLACE



Surveillance

Visible from the pool surround?
Simple layout with visible doors?
Low lockers for increased visibility?
Lockers to the rear of cubicles?
CCTV cameras?
CCTV monitors?



SPACE & PLACE

nic.Bryant@space-place.com

answers@space-place.com

0800 909 8008

07919 548481

<https://space-place.com/>