



Wigan Council



Greenheart



Forestry
England



The Wildlife Trust for
**Lancashire
Manchester &
North Merseyside**

Wigan Greenheart Landscape Recovery Scheme


Department
for Environment
Food & Rural Affairs



Landscape Recovery



www.wigan.gov.uk



WiganCouncilOnline



WiganCouncil

Wigan Greenheart



A Recovering Landscape



Conservation efforts throughout
the Northwest

e.g. Original Greenheart project in Wigan

1970s recovery begins

Natural environments with diverse
habitats, rich in wildlife start to
develop





Three Sisters Spoil Heaps



Ince Moss Colliery



Three Sisters Nature Reserve



Kirkless Nature Reserve





The Wildlife Trust for
**Lancashire
Manchester &
North Merseyside**



Wigan
Council



Great Manchester Wetlands Nature Improvement Area



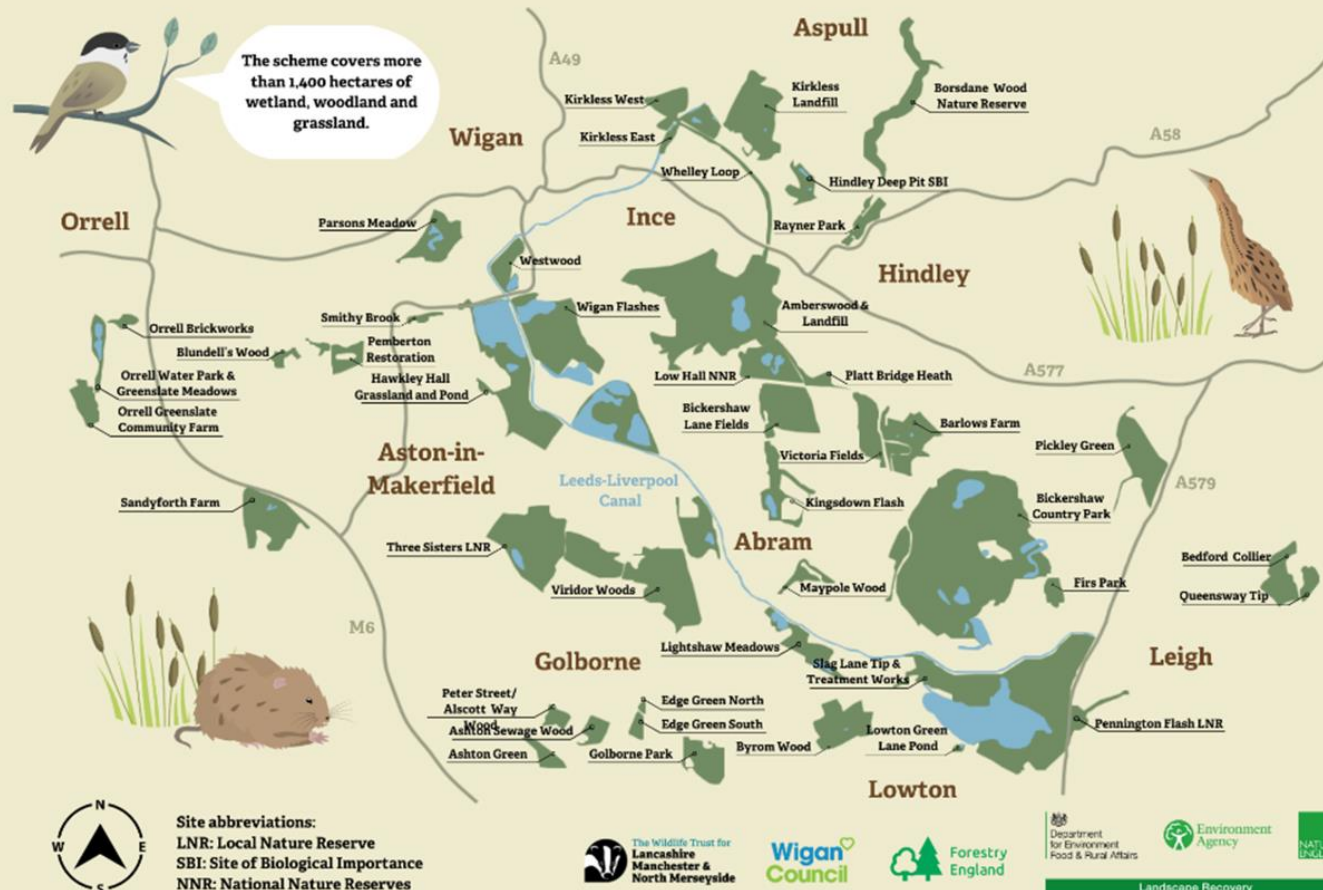
Designated in 2012

“By 2025, Great Manchester Wetlands will be a thriving, resilient and inspirational landscape that delivers real benefits to local communities and the local economy”

The Flashes of Wigan and
leigh National Nature Reserve



Map of Wigan Greenheart Landscape Recovery Scheme



Wigan Greenheart Landscape Recovery Scheme

Background summary

- To expand and improve habitats, continuing the restoration of a landscape once devastated by industry. Connecting existing mosaic of habitats to benefit threatened species such as the willow tit and bittern, provide a richer landscape for wildlife, and provide benefits for Wigan Borough communities.
- One of 22 projects receiving funding from Defra through the first phase of the Landscape Recovery Fund: new Environmental Land Management (ELM) scheme alongside Countryside Stewardship scheme and Sustainable Farming Initiative.
- Covers 1446 ha, including much of the newly declared Flashes of Wigan & Leigh National Nature Reserve (NNR), at the heart of the Great Manchester Wetlands Nature Improvement Area (GM Wetlands).
- Carbon Landscape Partnership Legacy

Key Facts & Objectives

- The Delivery Body is Natural England (DEFRA funding administered through NE) and Lancashire Wildlife Trust, Wigan Council and Forestry England make up the project partners.
- The 'Development Phase' runs for two years from December 2022, putting plans in place for the 20 year minimum 'Implementation Phase' after 2024.
- Under the theme of species recovery, the flagship species are willow tit and bittern; we expect this will also lead to improvements for water vole, great crested newt, reed bunting... and people.
- Increasing the quality, quantity and connectivity of habitat mosaics in a post-industrial peri-urban landscape; with a focus on grassland, wet woodland and fen.
- Continuing revitalisation of nature through Wigan Greenheart policy, GM Wetlands Nature Improvement Area (NIA) partnership delivery and previous 5 years of Carbon Landscape restoration and community engagement.





Theme

The Wigan Greenheart Landscape Recovery Scheme, supported by the delivery body Natural England, is focused on the theme of species recovery, enhancing and improving biodiversity: *Recovering and restoring England's threatened native species recovering priority habitats, improving habitat quality and increasing species abundance.*

Aims

- To restore and manage a post-industrial landscape, supporting species recovery through increased connectivity and resilience, building on more than 25 years of landscape scale conservation.
- To reconnect people with their landscape through improved access, learning and volunteering opportunities.
- To deliver wider socio-economic benefits from the landscape.

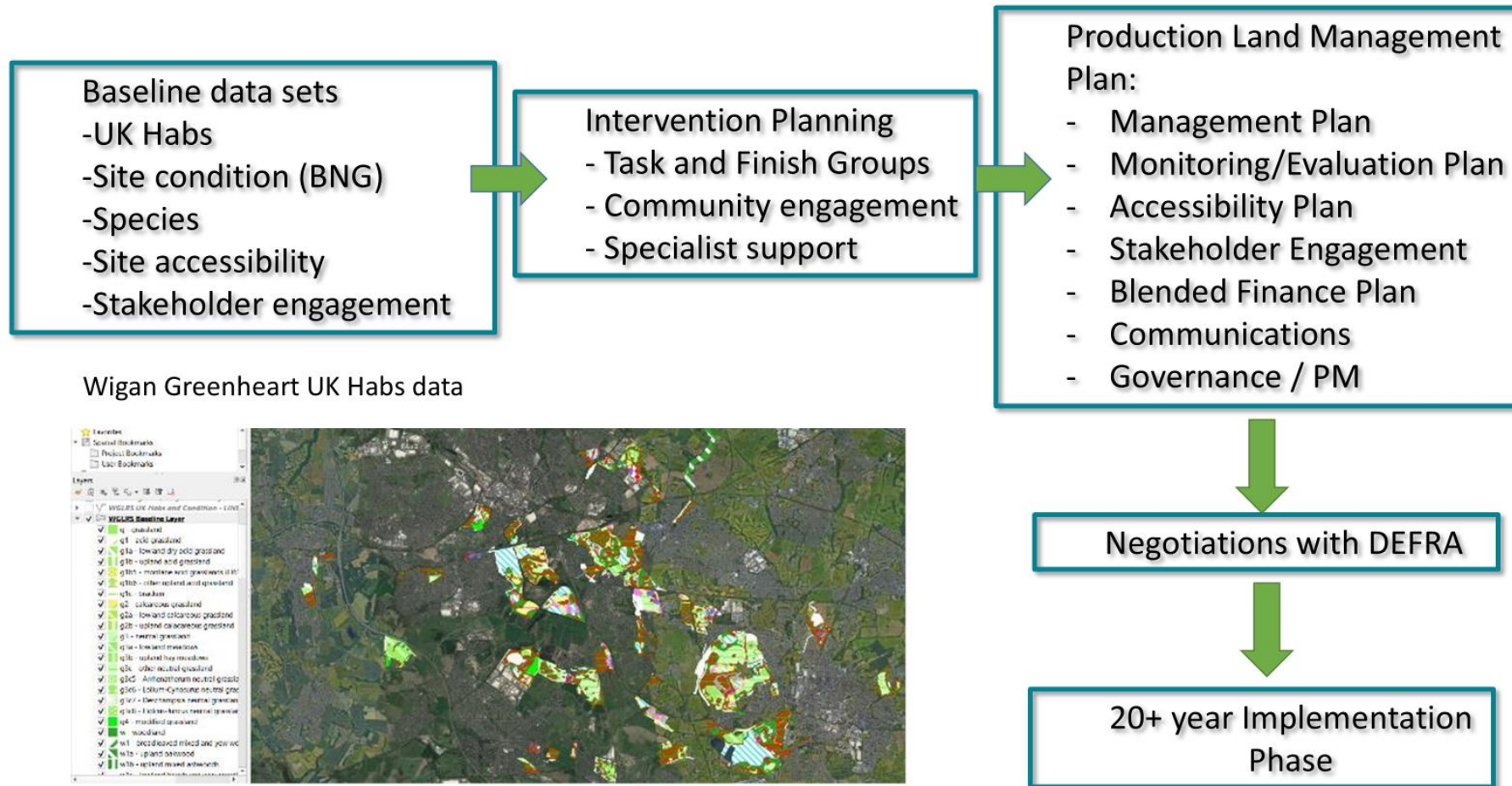




Stages of (ELMS) Landscape Recovery Scheme

- Application
 - *Produced with partners*
- Enrolment
 - *No funding, short window and fairly demanding, requiring detail*
- Development
 - *2.5 year fully government funded project*
- Assurance and Negotiations
- Implementation
 - *20 + Year delivery phase*
 - *Blend of public and private finance*

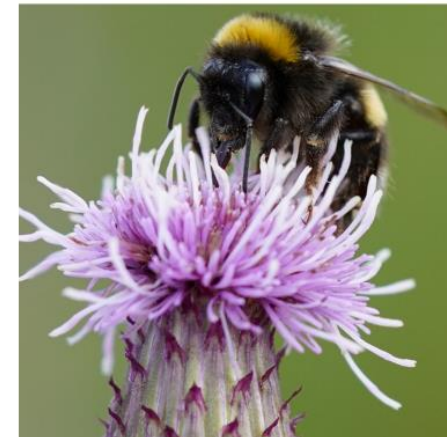






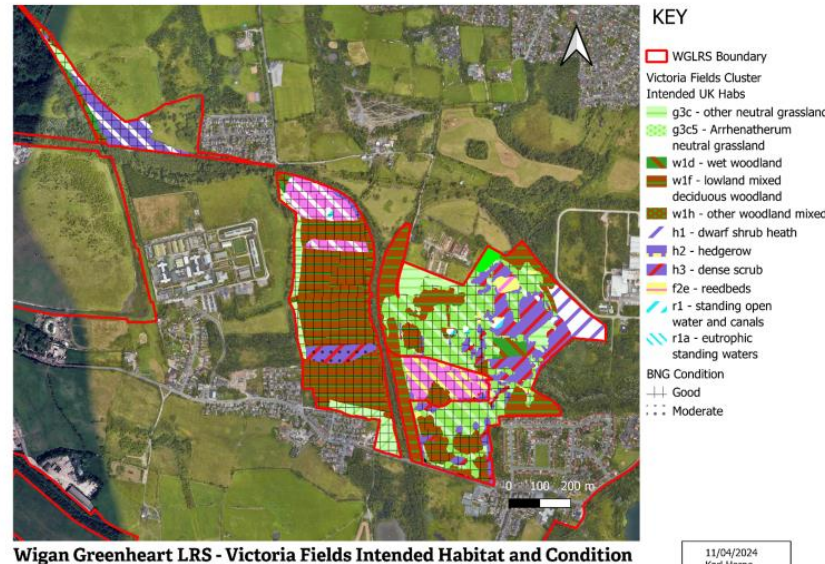
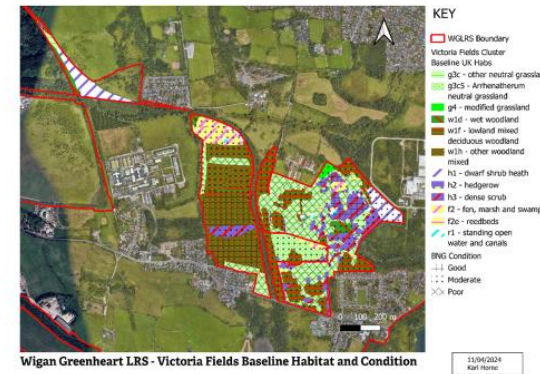
WGLRS project progress to Date

- **6 x Deliverable plans submitted to Defra** (Land Management Plan, Access Plan, Stakeholder Engagement Plan, Monitoring and Evaluation Plan, Blended Finance Plan, Project Management and Governance Plan)
- **Entered into 4 – 6 month Bridging Phase**
 - *Deliverable Clarifications*
 - *Amending Deliverables*
 - *Public Funding Negotiations*
 - *Negotiating and signing of bespoke agreements*
- **20 year Implementation Phase**
 - *Between October – December 2025*



Site Intervention Planning

- Project designs
 - *Intervention plan with map*
 - *Long term management plans*
 - *Access Plan*
 - *Costings*
- Prioritisation/Justification
- Consents & Permissions
- Stakeholders and Partner consents
 - co-design





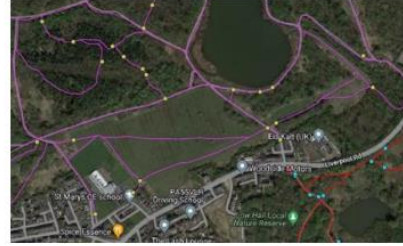
Baselines



Species



Habitats

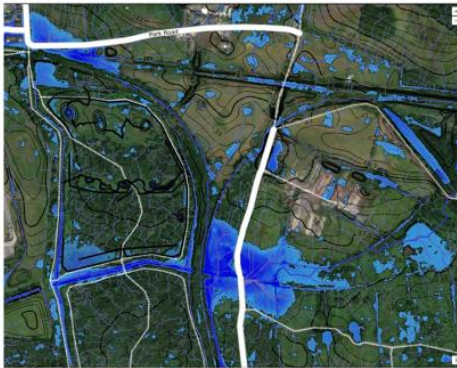


Accessibility



Public consultations

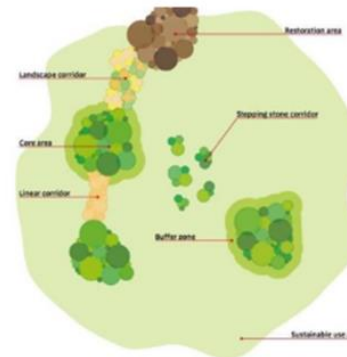
Interventions



Modelling



Co- design

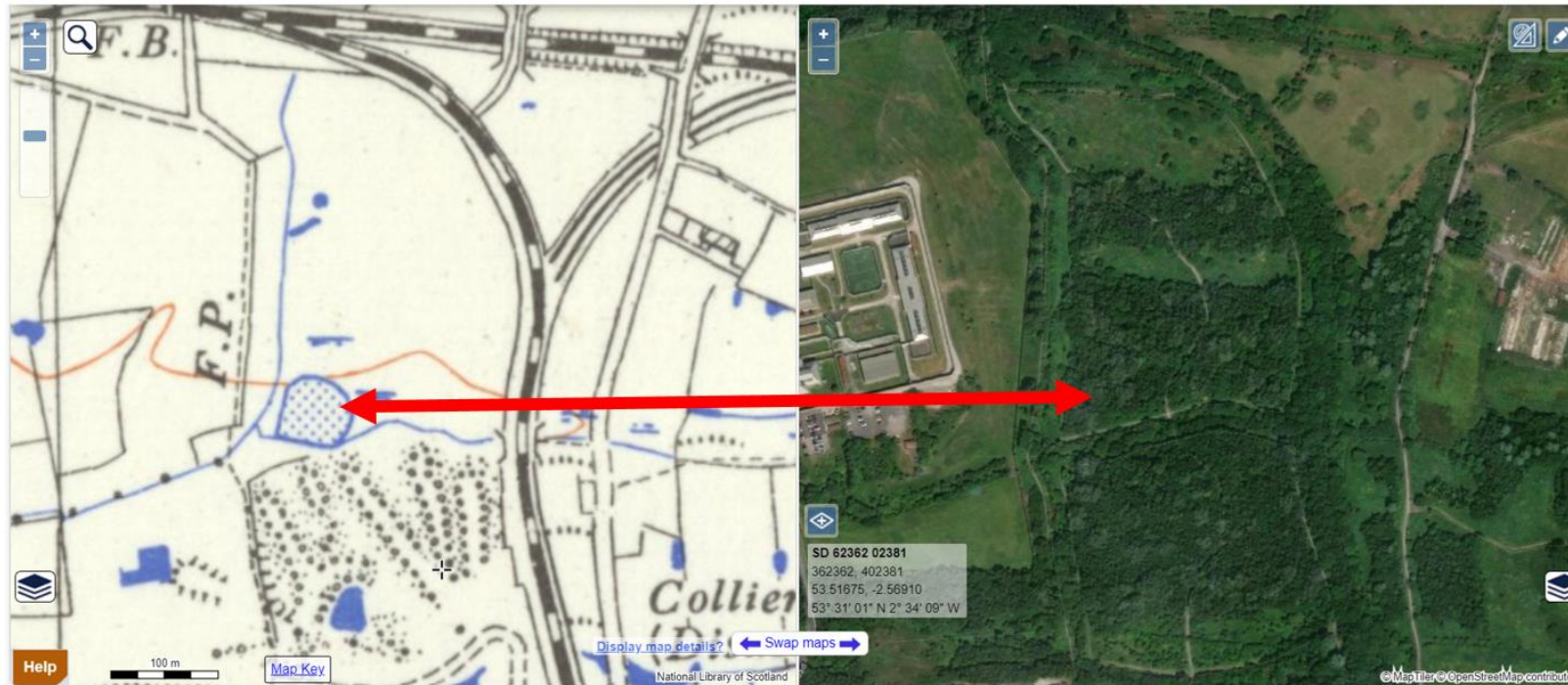


All encompassing project design that delivers real benefits for wildlife and people to thrive together





Reviewing Historic Mapping Data – Ordnance Survey C. 1956 – 1964

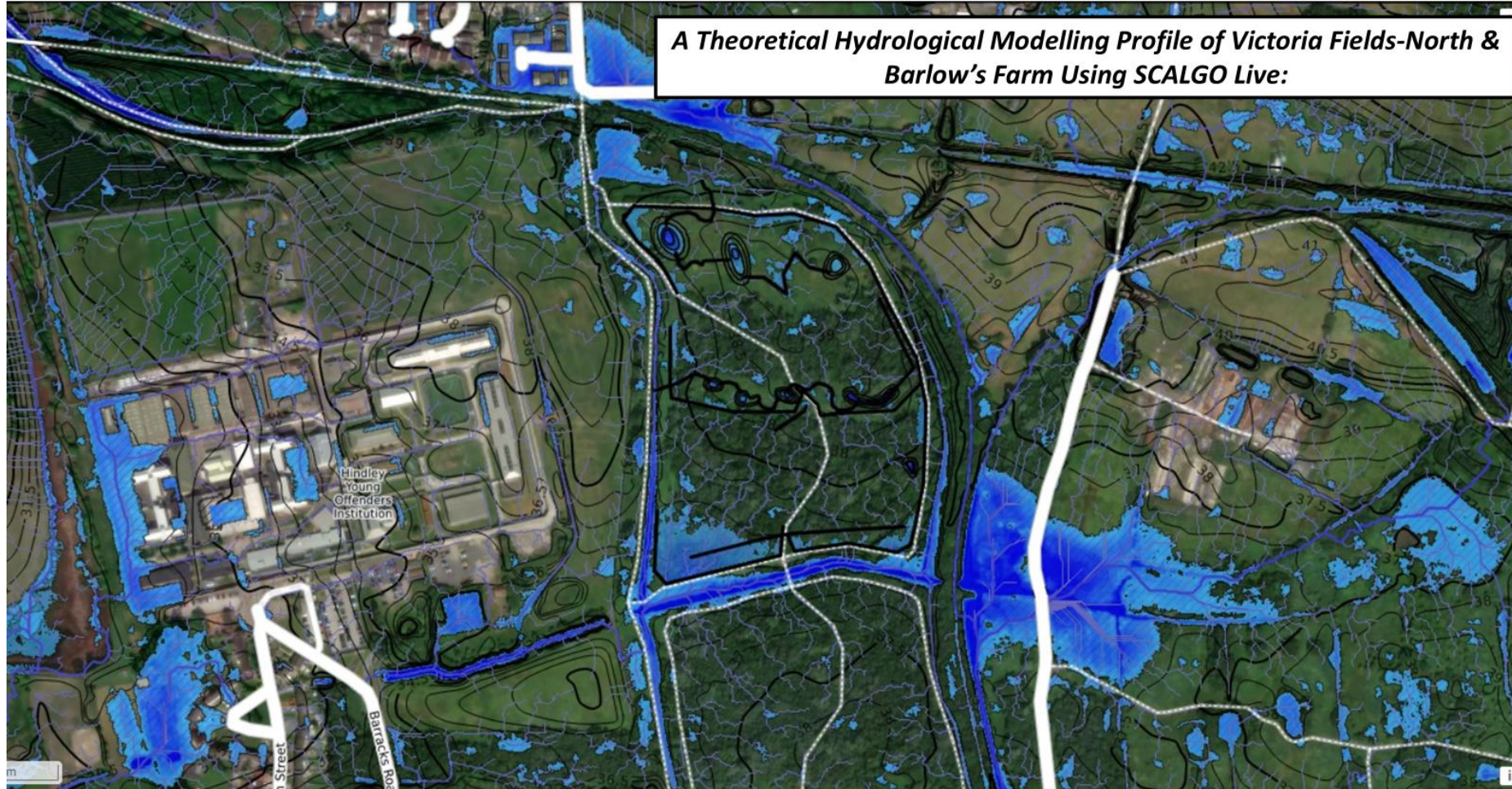


Showing areas of pre-existing wetland habitat...





A Theoretical Hydrological Modelling Profile of Victoria Fields-North & Barlow's Farm Using SCALGO Live:





Site Intervention Planning

- Evidence-based decision making
- Habitat enhancements
 - Priority wetland habitats
- Benefits to wildlife
 - *Water Vole*
 - *Willow Tit*
 - *Invertebrates (Inc. Odonata)*
- Access improved and managed to ensure sensitive habitats protected
- Surface water attenuation
 - *Slowed flow on site*
- Long term site management plans
- Monitoring Plan





Stakeholder Engagement

- Re-establish relationships from previous projects, such as Carbon Landscape
- Tackle barriers to accessing nature
- Encourage participation in the Greenheart Landscape Recovery Scheme
- Ensure stakeholders understand the need for the project and are supportive of its aims and ambitions
- Provide opportunities for stakeholders to co-design the project
- Influence project management and may influence governance arrangements.





Blended Finance

- Identify goods and services
 - *Habitat improvements & Species recovery*
 - *Climate resilience (i.e. addressing local flooding)*
 - *Social benefits - Health & Wellbeing, access and community recreation*
- Identify Nature Markets & private investment
 - *Biodiversity Net Gain*
 - *Carbon Credits (potentially via Wilder Carbon)*
 - *Corporates*
 - *Local Business*
- Producing a business plan - inc. financial model
- Extended Greenhouse Gas Monitoring
- Engaging with potential investors/funders
- Blend and stack, along with Public investment - DEFRA





Thank you



Wigan Greenheart Landscape Recovery

The Wigan Greenheart Landscape Recovery scheme covers a combined area of over 1,400 hectares, including the Flashes of Wigan and Leigh National Nature Reserve. We are working together with partners, making connections for nature's recovery.

Share



10 % of the UK's willow tits live in Wigan or nearby



70 % of the borough is designated as green space



50 or more years of post industrial restoration



• find out more - [here](#)

