

Retrofit as Prevention

Building Health and Community
Partnerships in Derby

Georgia Pulford

Climate Change Projects Officer

Derby City Council

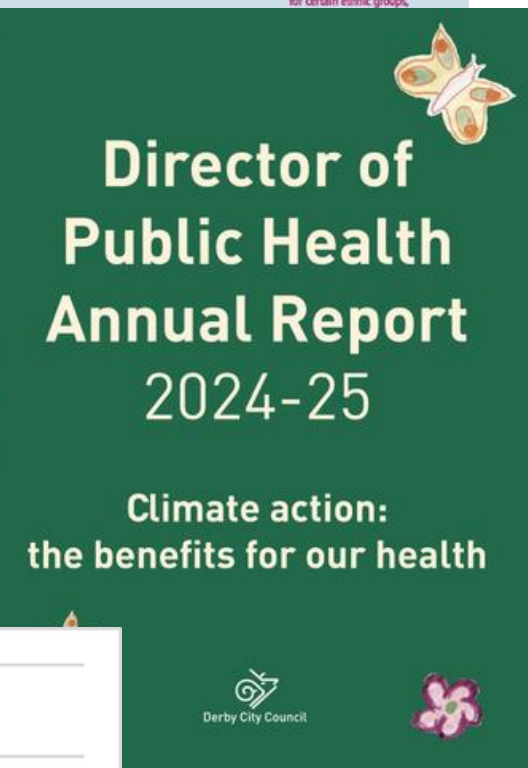
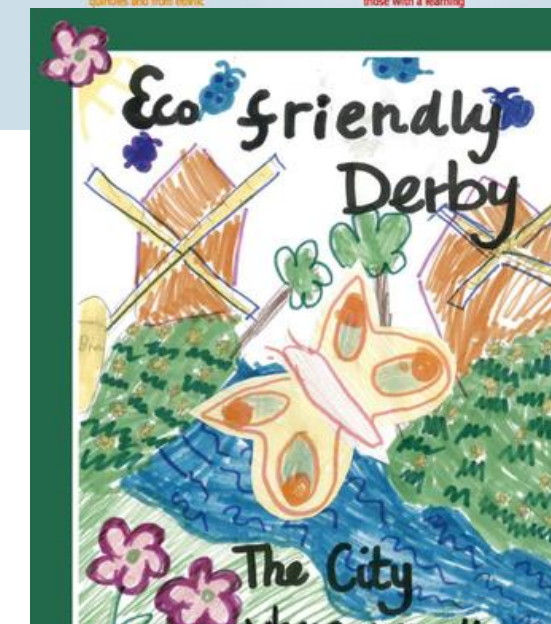
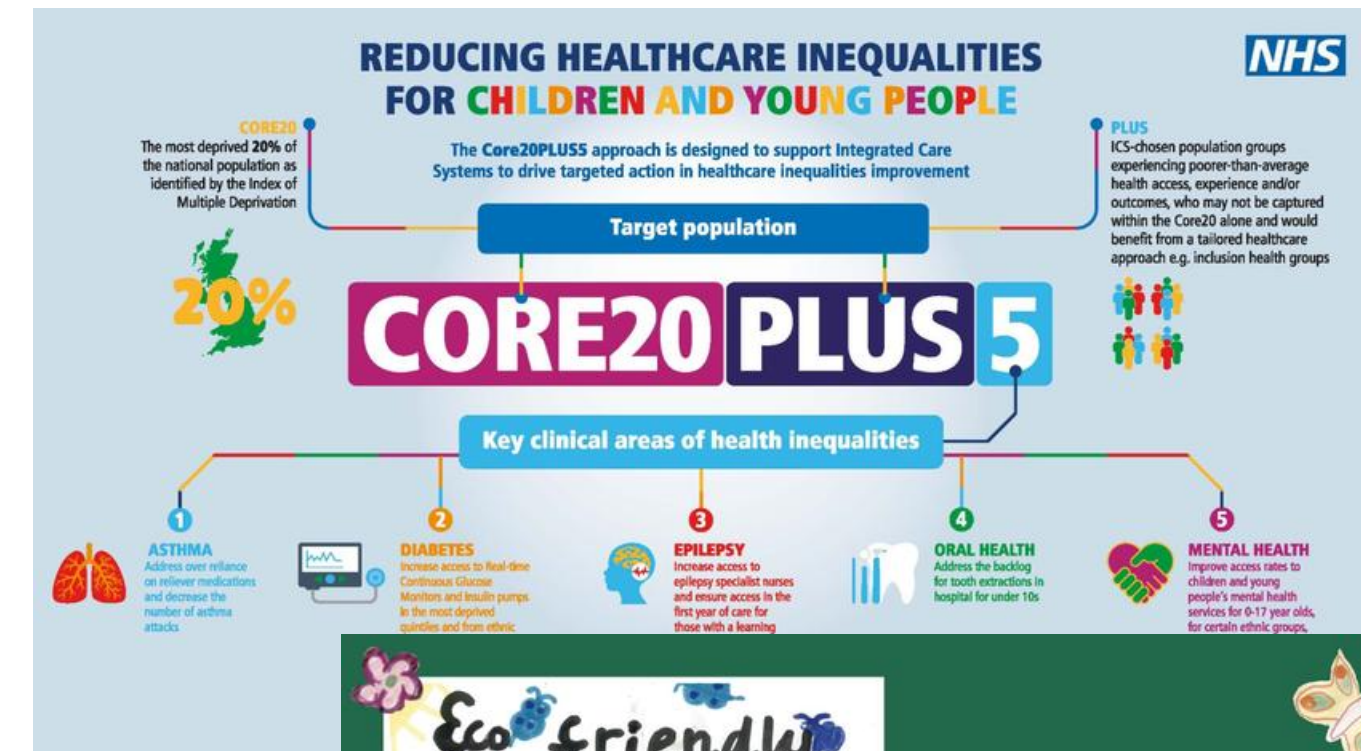


Why a health lens?

- Cold homes linked to respiratory and cardiovascular conditions
- Fuel poverty impacts mental wellbeing and financial stress
- Residents respond more readily to health and affordability messaging than carbon
- Health framing widens ownership



Derby City Council



Joining the dots



Derby City Council

- Joined up Council teams, energy charities, & voluntary sector orgs
- Created a regular space for updates & shared learning
- Improved clarity around funding & eligibility pathways
- Strengthened referral routes
- Aligned messaging



**National
Energy
Foundation**



**GREEN
DOCTOR**



Community Action

Engaging NHS Primary Care



Derby City Council

- Identified shared priorities
- Framed warm homes as preventative, non-clinical support
- Focused on simple referral process
- Ongoing relationship-building rather than one-off engagement
- Acknowledged capacity constraints within primary care

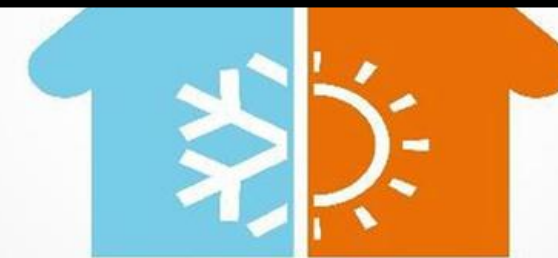
Patient with respiratory illness or another condition worsened by being cold?



Ask – is their home cold/damp?



If yes – refer to social prescriber for a referral to partner organisation.



Health impacts of net-zero housing in
England

March 2025

What partnership has changed

- Better referral routes
- Earlier engagement with vulnerable households
- Improved awareness among frontline organisations
- Retrofit seen as part of prevention, not just decarbonisation
- Improved outcomes

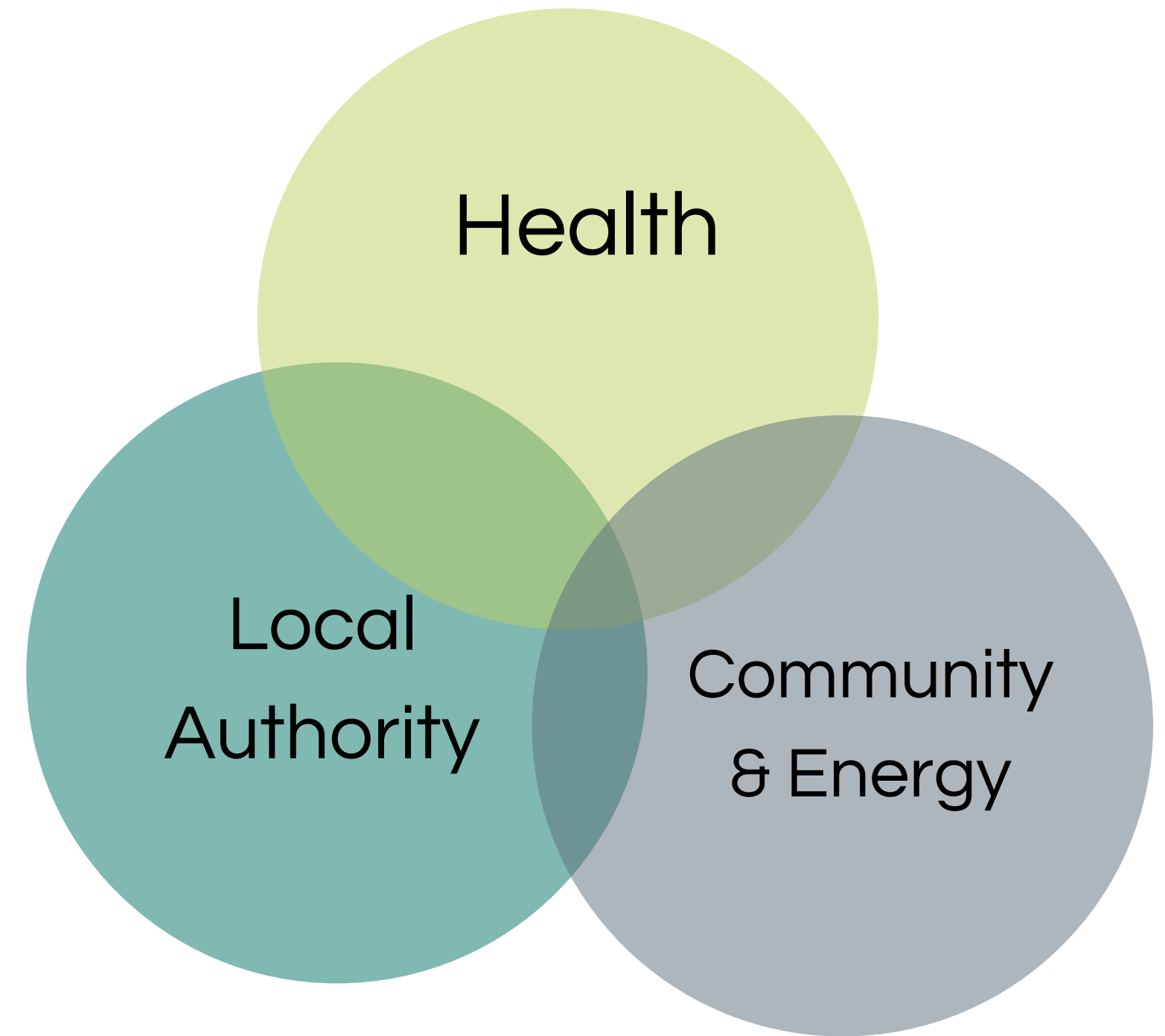
"We would like to extend our heartfelt thanks and congratulations to the teams behind the energy support initiatives being delivered in Derby... We are delighted to see a reduction in referrals for energy support from our Welfare Reform Team Officers."

Challenges & realities



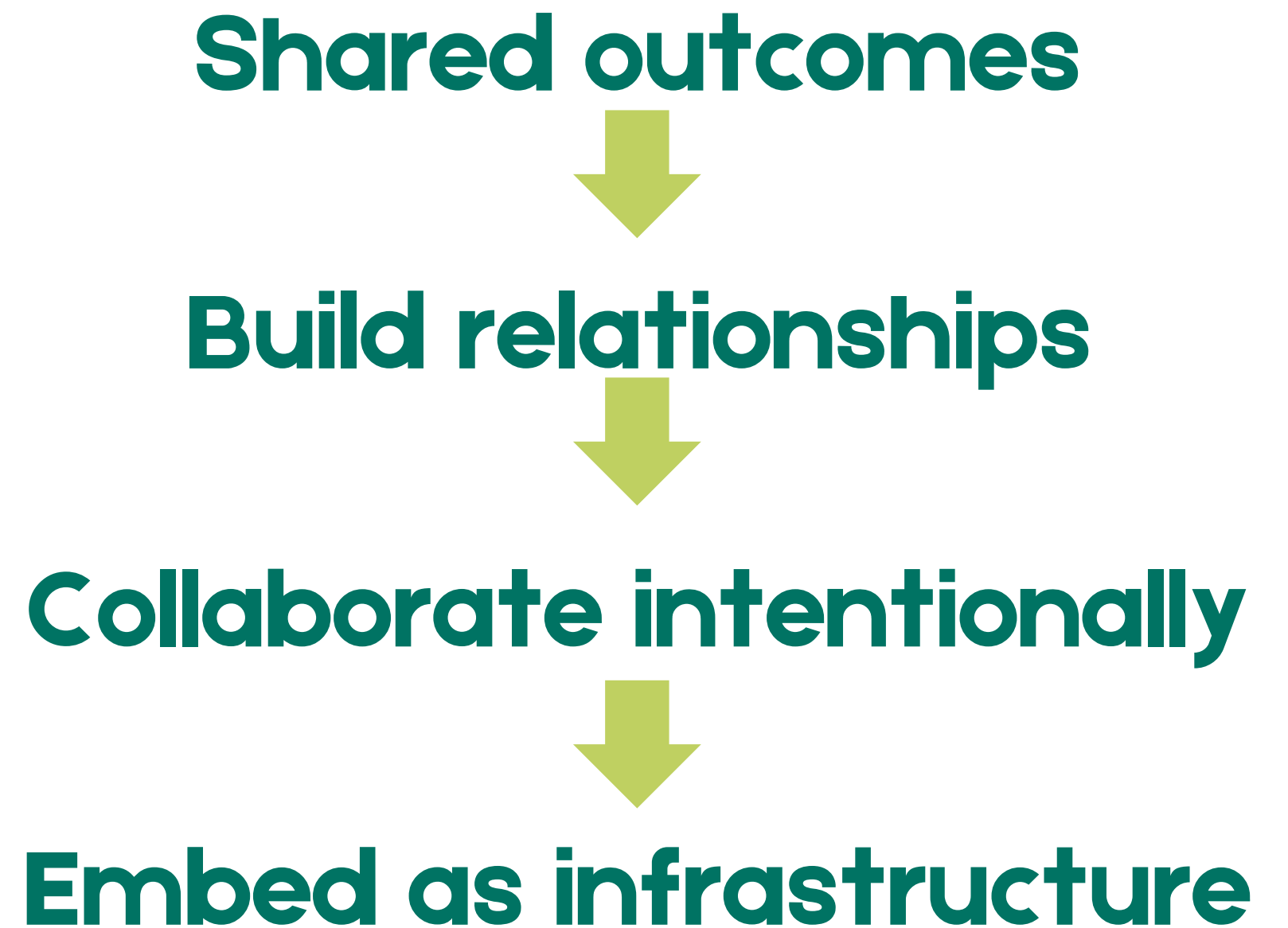
Derby City Council

- Health sector capacity is stretched
- Different priorities and operating timelines
- Short-term funding vs long-term relationship building
- Trust takes time



Retrofit and Health
Integration

- Start with shared outcomes (e.g health and inequalities)
- Invest in relationships before expecting referrals or scale
- Create space and time for collaboration
- Treat retrofit as part of long-term service infrastructure - not a short-term programme



Thank You

georgia.pulford@derby.gov.uk