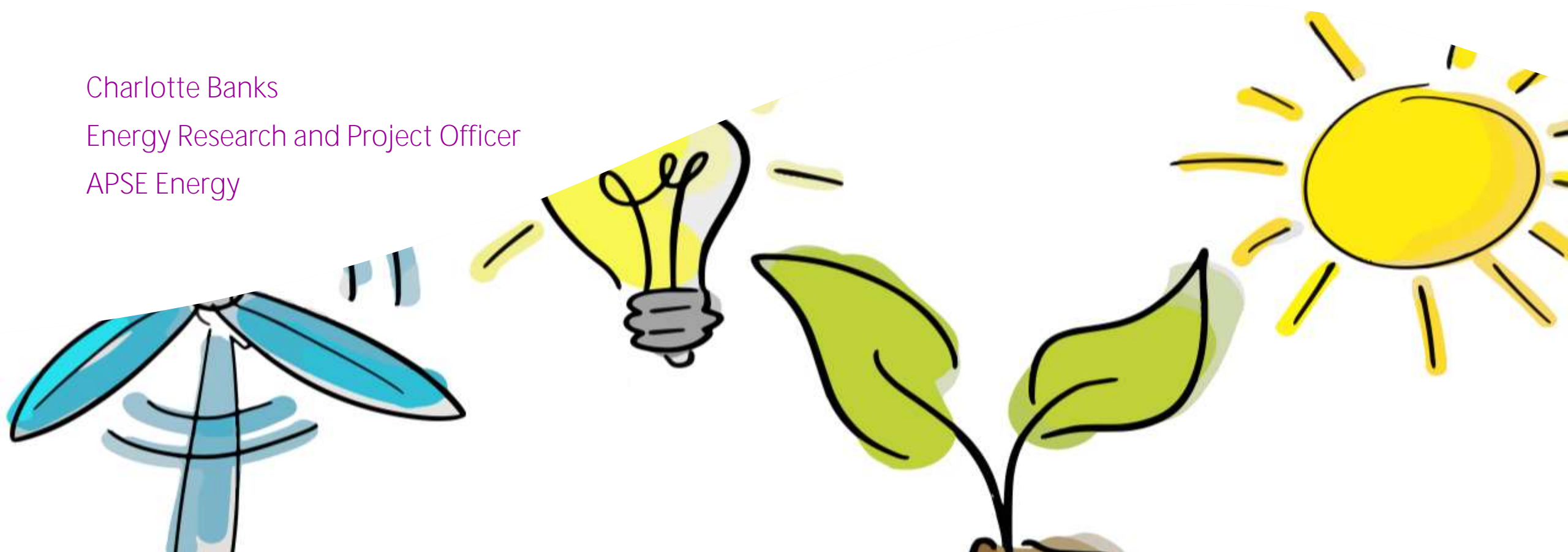


Local Authority Climate Emergency Declarations

Charlotte Banks

Energy Research and Project Officer

APSE Energy



Baseline Position

SCATTER

A carbon footprint tool to reduce city-level emissions

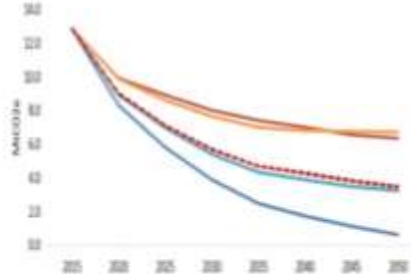
1

GHG Inventory



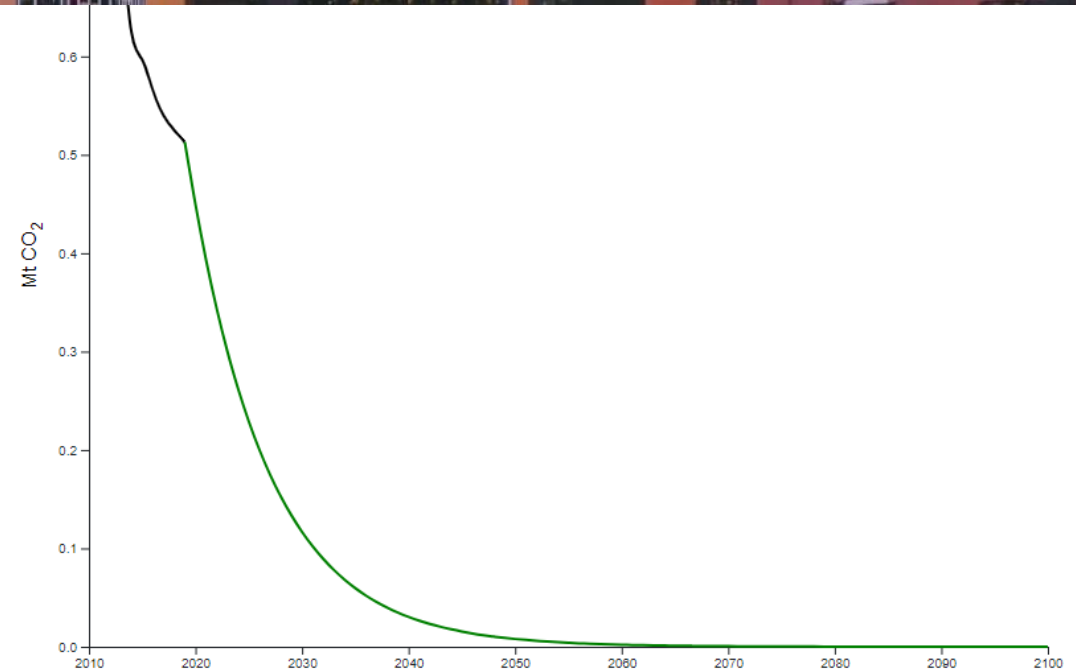
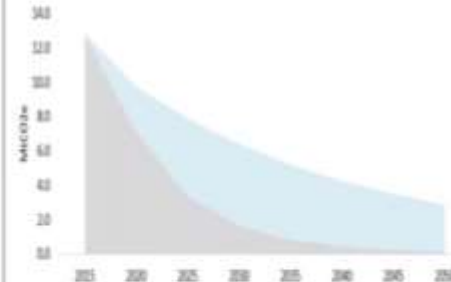
2

Pathways tool



3

Carbon Budget



Focusing your Target



- Wording
- Council's own emissions, district emissions
- Clarification statement
- Leadership

- Political will
- Energy focus
- Behaviour change
- Strategy & action plan

Strategy



- You will all have been through the process of producing a strategy for your services
- A Climate Emergency strategy brings all the work together – guides decision making, provides a pathway from point A to point B, advertises intent, sets the topic within the wider context of the council
- There needs to be a link to other policies in the council such as asset management plans, treasury mgmt. or investment plans, service plans for individual services, fleet management plans, corporate plan, the local plan
- All of these are linked across the Council and are related to the energy and climate emergency agenda
- Engagement, ideas
- Short, medium and long term

Ideas for your Plan

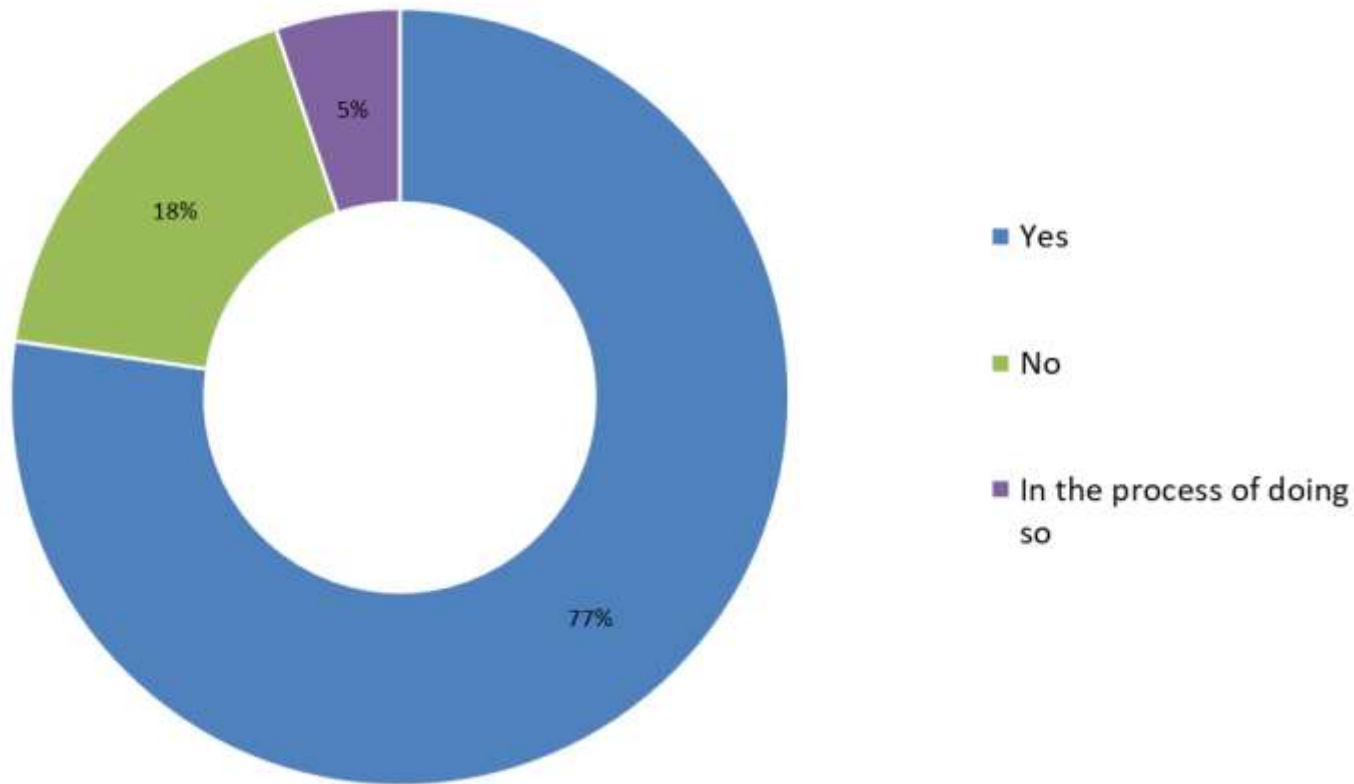


- Bin lorries
- Heat buildings
- Innovation
- Renewables - solar

- Examples
 - Warrington
 - Barnsley
 - Lancaster

Results from the Survey

Has your Council declared a climate emergency?



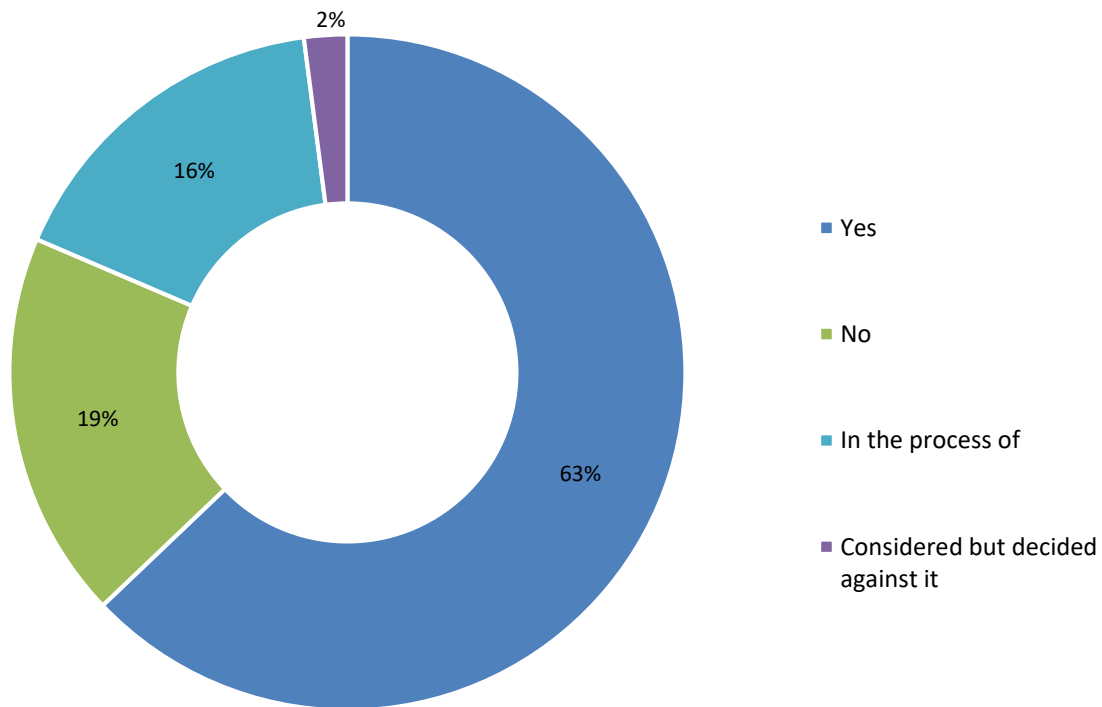
Climate Emergency Survey Report

A summary of the responses to APSE Energy's climate emergency survey 2019

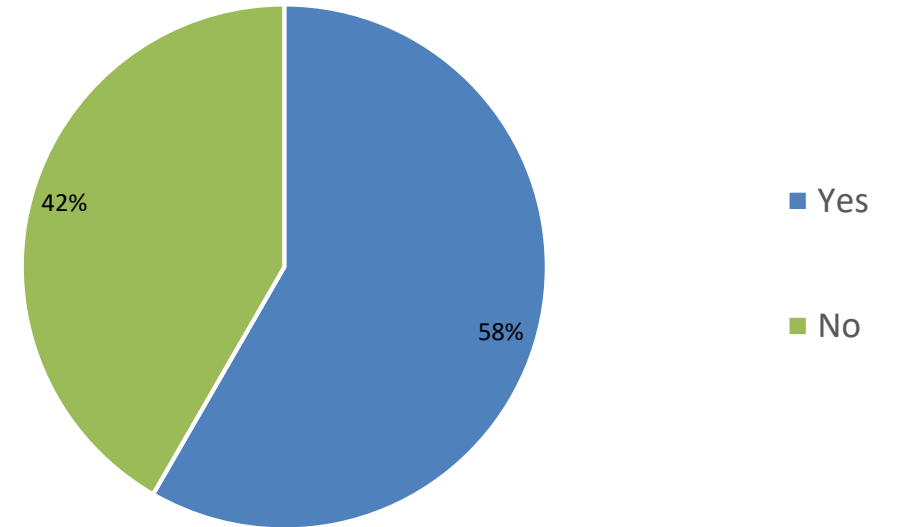


Results from the Survey

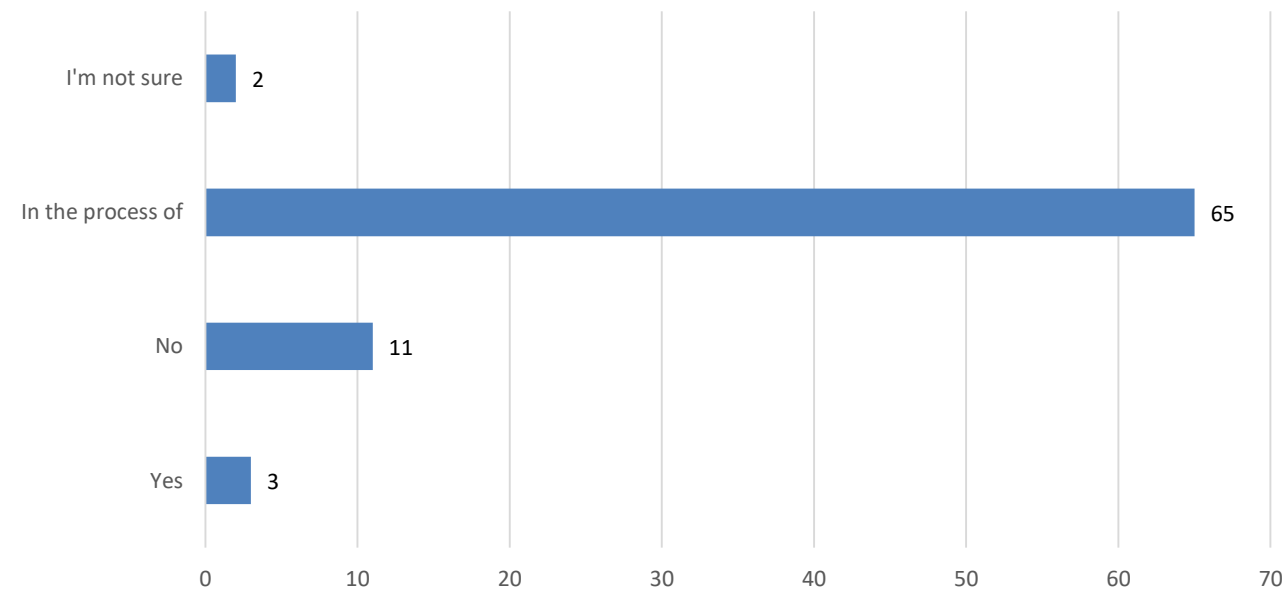
Have you set a net zero emissions target date?



Are you planning to set a carbon budget for the timeframe between now and your target date?



Do you have an action plan in place to achieve your target?



APSE Energy



Consultancy Support

- Has your council declared a climate emergency?
- Do you have a plan to address it?
- Do you have the staff, capacity and expertise to put your plan into action?

APSE Energy was established to help inform and support local authorities in exactly this kind of situation

Climate Emergency Handout

- This handout outlines the help that APSE Energy can provide to local authorities around the climate emergency agenda



APSE Energy Publications



APSE Energy members free electronic and hard copies

Local Authority Climate Emergency Declarations

Strategic and practical considerations for climate emergency declarations, targets and action plans



How APSE Energy can help local authorities meet the climate emergency challenge



How ECO3 funding can benefit local authorities

A simple guide to the Government's ECO scheme for energy saving home improvements



APSE Energy Events



Corby

- Tuesday 28 January 2020
- Climate change – data, housing and action
- Addressing climate change by looking at the linked issues of housing, data and policy
- **Identifying your organisation's carbon footprint**
- 2 site visits
- APSE Energy members free

The Big Energy Summit 2020

- Leadership in a Climate Emergency
- Tuesday 10 & Wednesday 11 March 2020
- Chesford Grange Hotel and Spa, Kenilworth, Warwickshire
- 2 free places for APSE Energy members



Discussion

1. Has your council declared a Climate Emergency?
2. Has your authority set a carbon neutrality target?
3. Do you have a plan in place in meet this target?





THANK YOU

Contact Details

Charlotte Banks, Energy Research and Project
Officer, APSE Energy

Email: cbanks@apse.org.uk

[@apseevents](#) [@apsenews](#)

Association for Public Service Excellence
3rd Floor, Trafford House
Chester Road, Manchester M32 0RS
telephone: 0161 772 1810
fax: 0161-772-1811
web: www.apse.org.uk

