



So you've declared a climate emergency – what next?

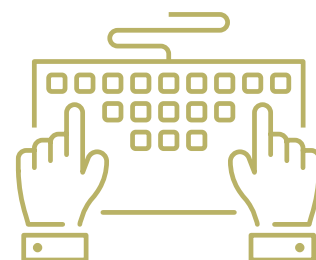
A new APSE report - written and researched with the New Policy Institute - sets out the steps that UK councils need to consider in translating climate emergency declarations into positive actions to address climate change. The report identifies both the barriers and opportunities for councils to deliver on commitments to work towards net-zero carbon emissions. Drawing upon the near-term targets, published by the Committee on Climate Change, the report highlights many achievable actions by local authorities in reducing emissions in assets and building, energy, transport, leisure and waste and recycling services.



[The report is FREE to download from the APSE website](#)

Membership Resources

We are now setting up our online Advisory Group meetings. These meetings - FREE for APSE members - are an excellent shared learning opportunity for those who work in local government. For more information about the services we cover and upcoming dates [click here](#).



Our dedicated team of Principal Advisors are currently working on remobilisation reports for post-COVID guidance for local council frontline. The first of our remobilisation reports is [here](#) (Soft FM) services. If you have further suggestions for support to feed through to our advisors please email Mo Baines on mbaines@apse.org.uk

COVID-19 briefings

The APSE COVID-19 Support Hub has been regularly updated with information and briefings. Our latest COVID-19 briefings include:

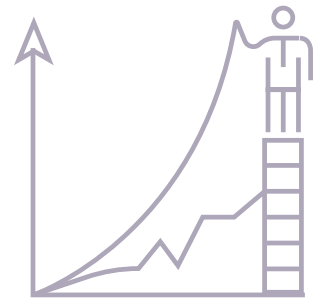
- Scotland's Route Map through and out of the crisis - [Click to read](#)
- Public convenience survey findings - [Click to read](#)
- Preparing for the wider opening of schools from 1 June - Planning guide for primary schools - [Click to read](#)
- Safer Public Places - Urban Centres and Green Spaces - [Click to read](#)
- Cemetery and Crematoria Resilience Survey - [Click to read](#)
- Sport England COVID-19 funding support for Local Authority Leisure - [Click to read](#)
- Second APSE Parks Resilience Survey May 2020 - [Click to read](#)
- Guidance on working safely in people's homes - [Click to read](#)
- New Guidance for operators and those working in or from a vehicle - [Click to read](#)





Performance Networks: Data templates 2019-20

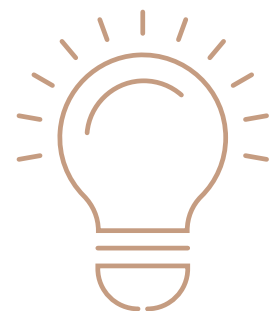
The data templates for 2019-20 financial year are now available to download from the new web portal from May onwards. Members of performance networks will receive an email to prompt you to download. There is good news for Streetscene as data collection has now been updated to make it easier for members to collect data when they are unable to split out their data into separate functions. To ensure all members get the help that they need with data completion we are also offering online training to all members which is free of charge. You can learn more about this training [here](#).



We are also pleased to announce an additional service to members! We are collecting data through to the end of June on the impact of Covid-19 on frontline services to assist with budget setting. We will be holding on-line working group meetings during June to decide on 10 short questions for this with a report to be produced in September 2020. This will certainly help the sector understand the comparable picture on the impact of COVID-19 and provide an explicable context to city treasurers as budgets are reviewed. For more information contact Debbie Johns on Djohns@apse.org.uk

Principles of Contract Management (CPD) - Book your place on one of our most popular training courses!

This extremely popular course takes a holistic approach to contract management: from conception and early scope, through the procurement cycle to managing live contracts. Earning 5 CPD points, this skills-based course is highly interactive, drawing on participants' questions and experiences. The sessions are led by APSE Associate Trainer, Andrew Uprichard, who has more than 25 years' experience supporting local authorities with complex commercial management, commissioning and procurement arrangements and 15 years working for a major law firm.



To book your place click [here](#). For more information contact Fiona Sutton-Wilson on FSuttonWilson@apse.org.uk

You can view the full range of courses [here](#). All courses take place on Microsoft Teams so all participants need is access to the internet on a laptop, desktop or smart device.



Lodi UK set to supply local authorities an effective viricidal disinfectant solution

Lodi UK is positioned to supply councils and local authorities throughout the UK with extremely effective and easy to use specialist viricidal disinfectants, and pest control products that will support the public and frontline services. One such product, Digrain Fumite OPP is a scientifically proven disinfectant smoke generator designed for easy, safe use in schools, gyms, hotels, homes, medical premises and commercial buildings amongst many others. You can learn more about this highly effective solution [here](#).



Egbert Taylor: Is it time for the UK to become more discerning about its supply chain?

One thing that the global pandemic has exposed is just how precarious supply chains are, especially those heavily reliant on overseas imports. It has also highlighted the vulnerability of big brands and the jobs of those responsible for keeping them operational. Brendan Murphy, Chief Executive at one of the UK's leading provider of waste management solutions Egbert Taylor, makes the case for the UK to take a more discerning approach to procurement [here](#).

Egbert Taylor

Underground Refuse Systems: Online supplier event

APSE Solutions is supporting Liverpool City Council to create a procurement framework for the supply of Underground Refuse Systems to UK local authorities. The procurement process has now been commenced with the publication of a Prior Information Notice and a draft specification. The specification will be finalised following engagement with suppliers.

To facilitate effective engagement suppliers expressing an interest will be invited to participate in an online supplier event planned for 3 June. APSE Solutions will be hosting the event on its virtual platform. For more information [click here](#).





Energy audits for your estate: APSE Energy can help!

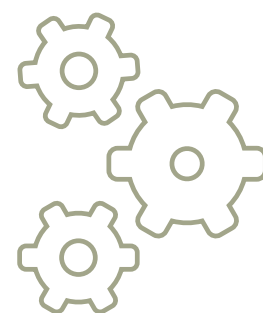
APSE Energy is in the process of helping councils with energy audits for individual buildings or a number of buildings across their estate. The audits differ from an in depth technical investigation of a leisure centre for example, through to support for energy bill validation. We understand that different councils will have different needs in terms of auditing their estate, but energy efficiency and energy management should be high on the list of priorities for those councils who want to reduce emissions, as well as benefit from potential costs savings on energy spend.



If you wish to know more about energy audits, our consultants or APSE Energy, please contact Phil Brennan, Head of APSE Energy on 0161 772 1810 or at pbrennan@apse.org.uk.

Interim managers: Available for support in your frontline services

APSE Solutions' interim managers are handpicked and offer local authorities a safe pair of hands during sensitive times of transition, manager absence or when a special skill-set is required. We currently have specialists within waste, bereavement and other environmental services who are ready to commence new roles. All of our associates have a vast range of knowledge and understanding of the issues faced within the public sector and experience of service performance issues. They carry out consultancy reviews, interim management roles along with mentoring and coaching and stand ready to assist you in post COVID-19 remobilisation of services. We can even offer a call-off basis for over the phone support for a variety of technical expertise. To take a look at the profiles of the current interims we have available click [here](#). For more information contact Emma Taylor at etaylor@apse.org.uk.



CORONAVIRUS
PROTECT YOURSELF & OTHERS

**Supporting frontline services:
Visit APSE's COVID-19 online
Information Hub for regular updates**



April/ May APSE Direct: Read online!

All across the UK communities have been showing their appreciation for the tremendous efforts of local authorities as they continue to deliver to the vulnerable, empty the bins, ensure the public realm remains accessible, and provide meals to children, vulnerable older people and families. This special edition is dedicated to our invaluable frontline heroes; the glue that keeps our communities together. It covers a range of topics such as local government funding and income generation, as well as summaries of the challenges facing frontline workers and how these are being overcome.

[Visit the APSE website to download the magazine.](#)



Stay safe everyone!

