



Resource London

Future Focus – Improving the quality and capture of recyclate in a dense urban environment

Beverley Simonson
Local authority support manager

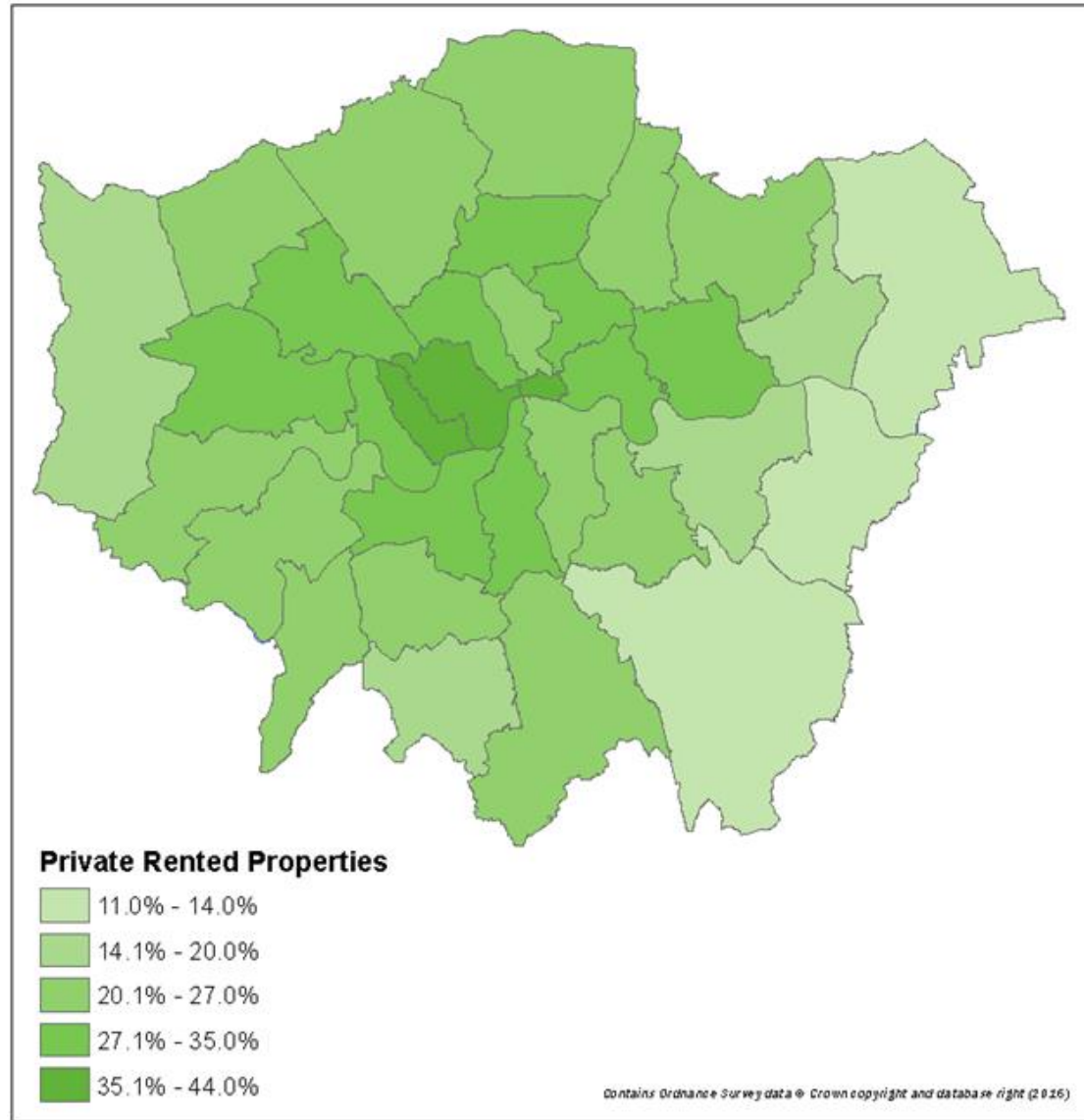


Resource London

Resource London

- **London waste authority support programme established in April 2015 as a jointly funded partnership between LWARB and WRAP.**
- **Budget of £9.3 million between 2017-20 (including LWARB, WRAP and EU funding).**
- **By 2020, London will have more harmonised, consistent and efficient waste and recycling services that will:**
 - Reduce the city's waste footprint and reinvigorate recycling to make a significant contribution towards the Mayor's ambition for London to achieve 65% recycling by 2030; and
 - make a significant contribution towards England achieving its 50% household waste recycling target in 2020.

Waste management in the domestic rented sector



Main issues

Fly-tipping and excess waste



Insufficient waste storage & separation areas



High bin replacement



Bulky Misuse



Poor Recycling Rate



Contamination



Difficulty containing waste



Contaminated recycling



Cost of Contamination toolkit

- **Free online toolkit to help measure the true cost of contamination**
- **Measures reactive costs incurred by authorities, including:**
 - Gate fees
 - Communications
 - Staffing
 - Extra contactor fees
- **Purpose is to:**
 - Calculate the true cost of contamination in the recycling stream
 - Provide officers with evidence to secure internal resources and funding to help tackle the issue
 - Provide in-depth service information for reporting to members
- **Working group including local authority representatives, LARAC, WRAP and the ESA**
- **5 boroughs trialled the toolkit – testing different collection methodologies**

London Environment Directors' Network

LEDNET



Resource London

The toolkit

<http://resourcelondon.org/resources/toolkits/cost-contamination-toolkit/>



Welcome

Welcome to Resource London's cost of contamination toolkit for local authorities. Please be aware that macros must be enabled for the toolkit to work correctly.

The toolkit allows local authorities to estimate the costs that they incur from current actions to reduce contamination in their household dry recycling stream. The scope of the tool covers the recycling supply chain stages shown below, including activities directed at residents, undertaken by collection crews and during bulking and treatment of recycling.

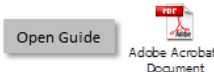
The recycling supply chain:



There are six sections in the toolkit and there is a brief description of each on the right of this page. The user navigates the toolkit by clicking on the green buttons at the top of each page.

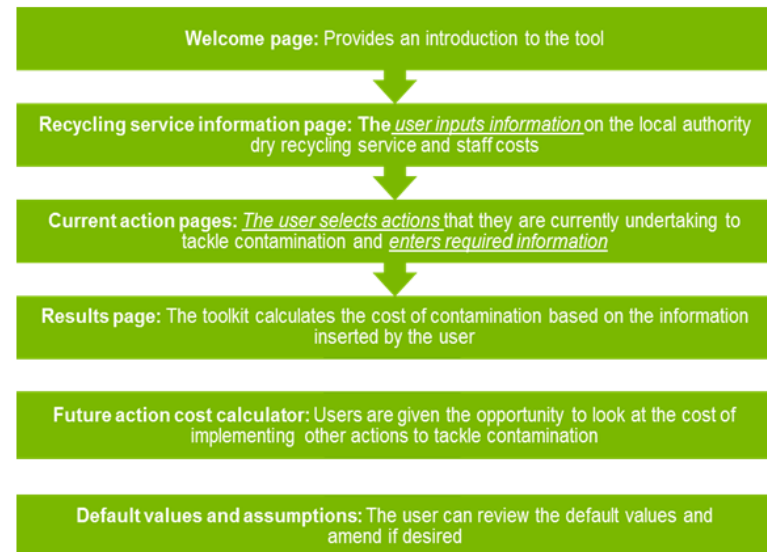
Users are required to enter information on their recycling service on the Recycling Service Information page, details of current actions to tackle contamination are entered on the Communications, Collection and Bulking and Treatment action pages. Default values are provided for some of the costs required by the toolkit, but cost calculations will be more specific with more bespoke information entered by the user.

A user guide for the toolkit is provided here:



The toolkit was designed and built by Anthesis Group in partnership with Resource London and the London Environment Directors Network (LedNet). Guidance and oversight was provided by a working group which included a number of London Boroughs (Lewisham, Newham and North London Waste Disposal Authority), LedNet, the Local Authority Recycling Advisory Committee (LARAC) and the Environmental Services Association (ESA). The London Boroughs of Bexley and Enfield also took part in the testing of the toolkit.

Overview of the pages in the cost of contamination toolkit:



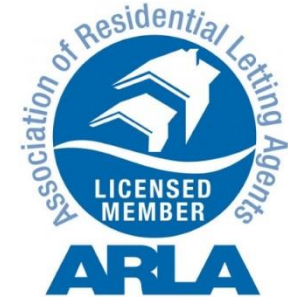
Guide to Improving Waste Management in the Domestic Rented Sector

 Resource London

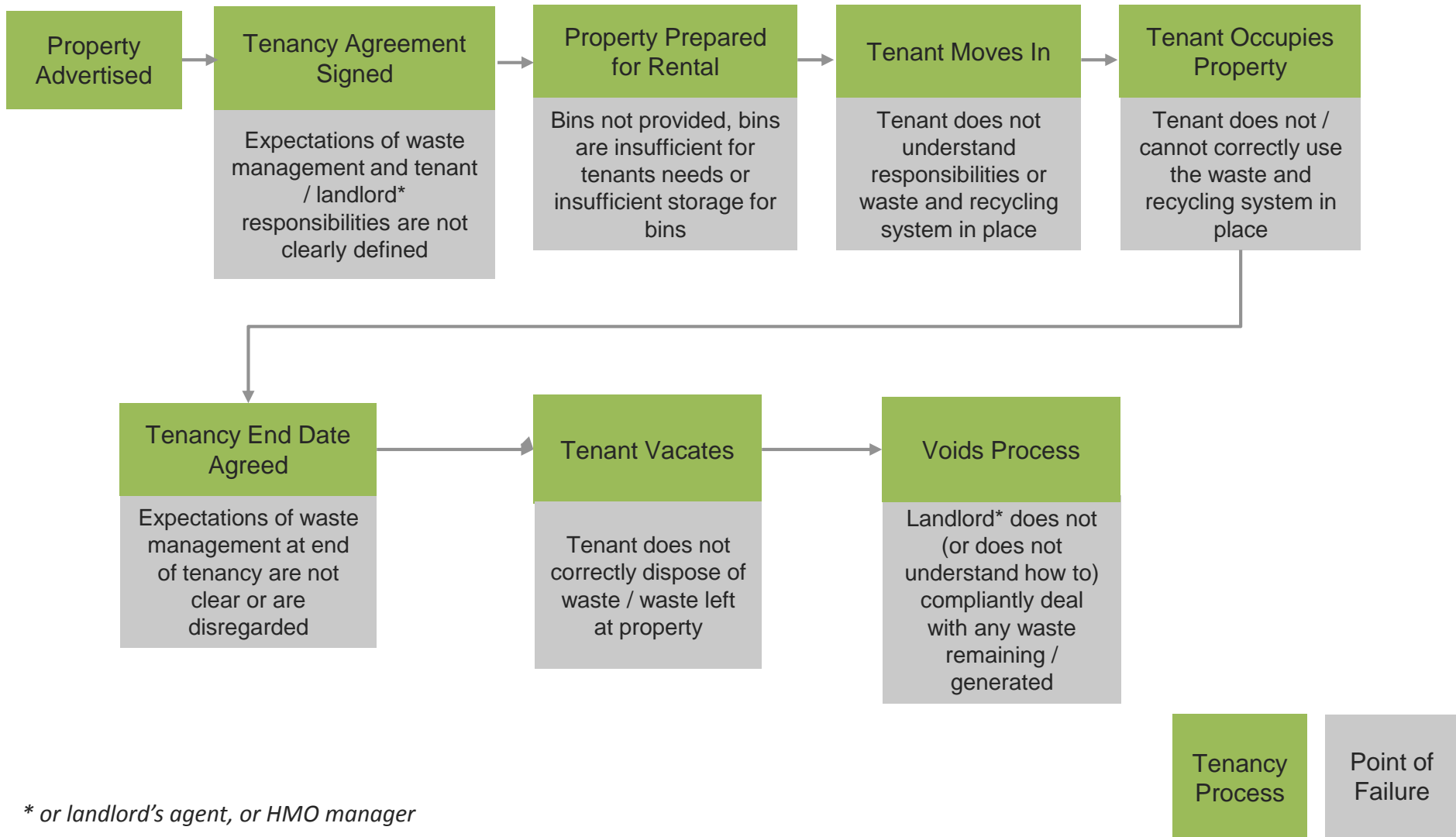
London Environment Directors' Network
LEDNET



Stakeholder Consultation



Tenancy Process - 'Points of Failure'



Tenancy Process - 'Points of Failure'

Contributory factors:

- **Lack of communication / information:**
 - *Responsibilities*
 - *Service provision / policies*
 - *Sanctions*
- **Attitudinal / cultural factors**
- **Language barriers**
- **Lack of containers**
- **Space - Property design restrictions**
- **Obstacles to presentation / collection of waste e.g.**
 - *Blocked communal areas*
 - *No access to bin stores (tenants or collection crews)*

Property
Advertised

Tenancy A
S

Expe
man
re

Tenant Occupies
Property

Tenant does not /
cannot correctly use
the waste and
recycling system in
place

Tenancy E
Agree

Expectations of
management and
of tenancy are not
clear or are
disregarded

Tenancy
Process

Point of
Failure

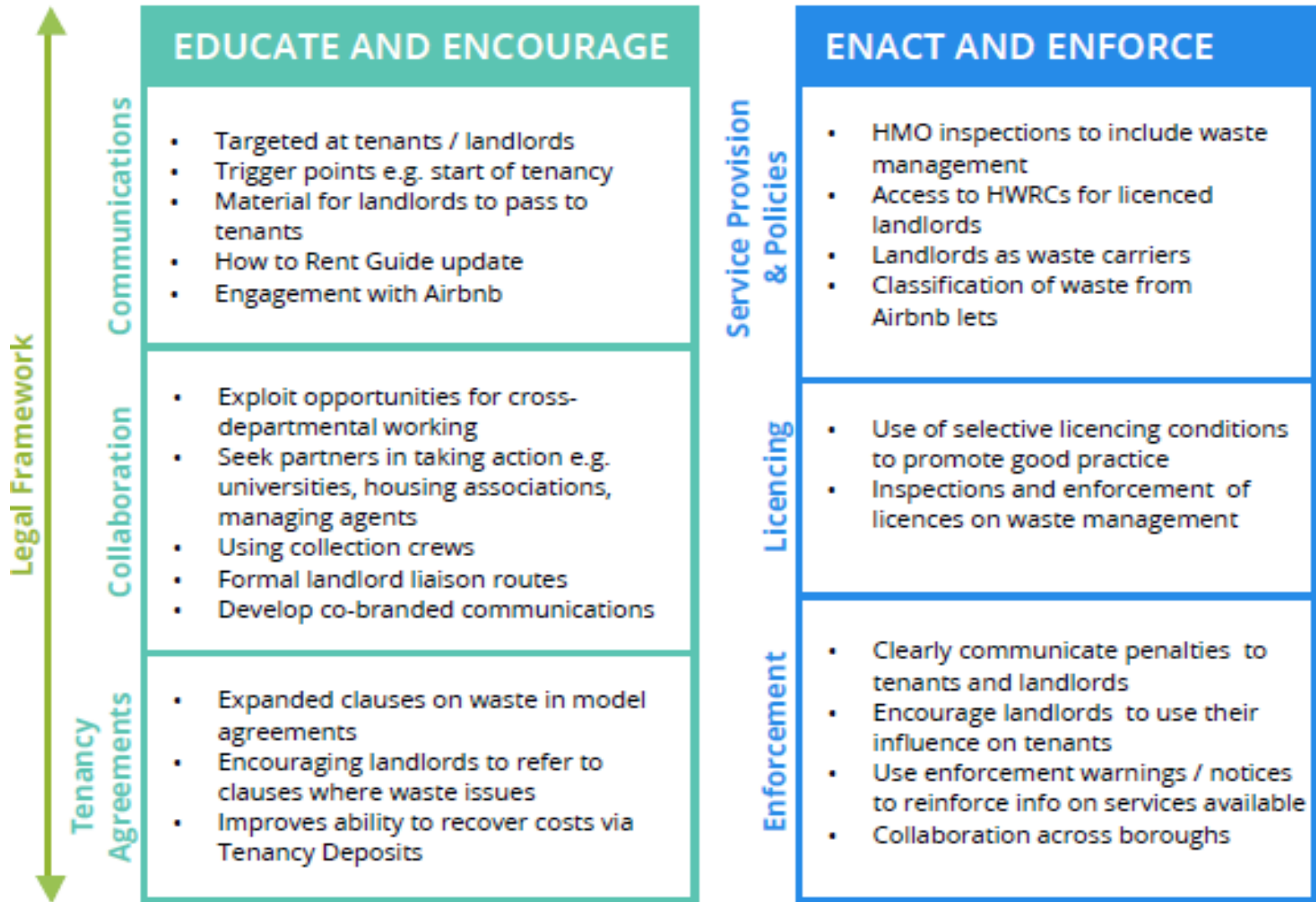
* or landlord's agent, or HMO manager



Res

L

Guide themes and recommendations



Follow up projects

Tackling contamination

- Aim to decrease contamination through interventions
- Big focus on evaluating the service
- Main findings so far
 - Contamination policy is a big influence
 - Feedback mechanism and flow of information
 - Crew engagement
 - Comms
 - Contractual



Interventions

Contamination policy

Kerbside

- Crew training to lift lids
- Feedback mechanism to resident
- Updated leaflet with clear contamination message
- Stickers on bins
- “Back to basics” comms campaign

Flats

- Inventory looking at condition of bins and sites
- Bin signage; locks; lids; cleanliness; wheels
- Opportunities for communicating
- Updating leaflet and poster
- Feedback mechanism
- Crew training
- Clear signage on residual bin stores/ “no food waste” on recycling
- Bin aperture/lid

Monitoring and evaluation



Domestic rented sector

- Working with London boroughs to develop projects
- Test recommendations from the toolkit
- Follow up on further work required
- Mayor's environmental strategy



Summary

What would assist even further to help improve the quality and capture of recyclate in a dense urban environment?

Planning?

Policy?

Consistency?

**Extended
producer
responsibility?**

**Targets? E.g.
carbon metrics**

Behaviour change?



Resource London

beverley.simonson@resourcelondon.org

www.resourcelondon.org.uk



LWARB
London Waste and Recycling Board