



ASSOCIATION FOR PUBLIC SERVICE EXCELLENCE

ANNUAL REPORT 2018

Paul O'Brien, Chief Executive, APSE

Business Plan



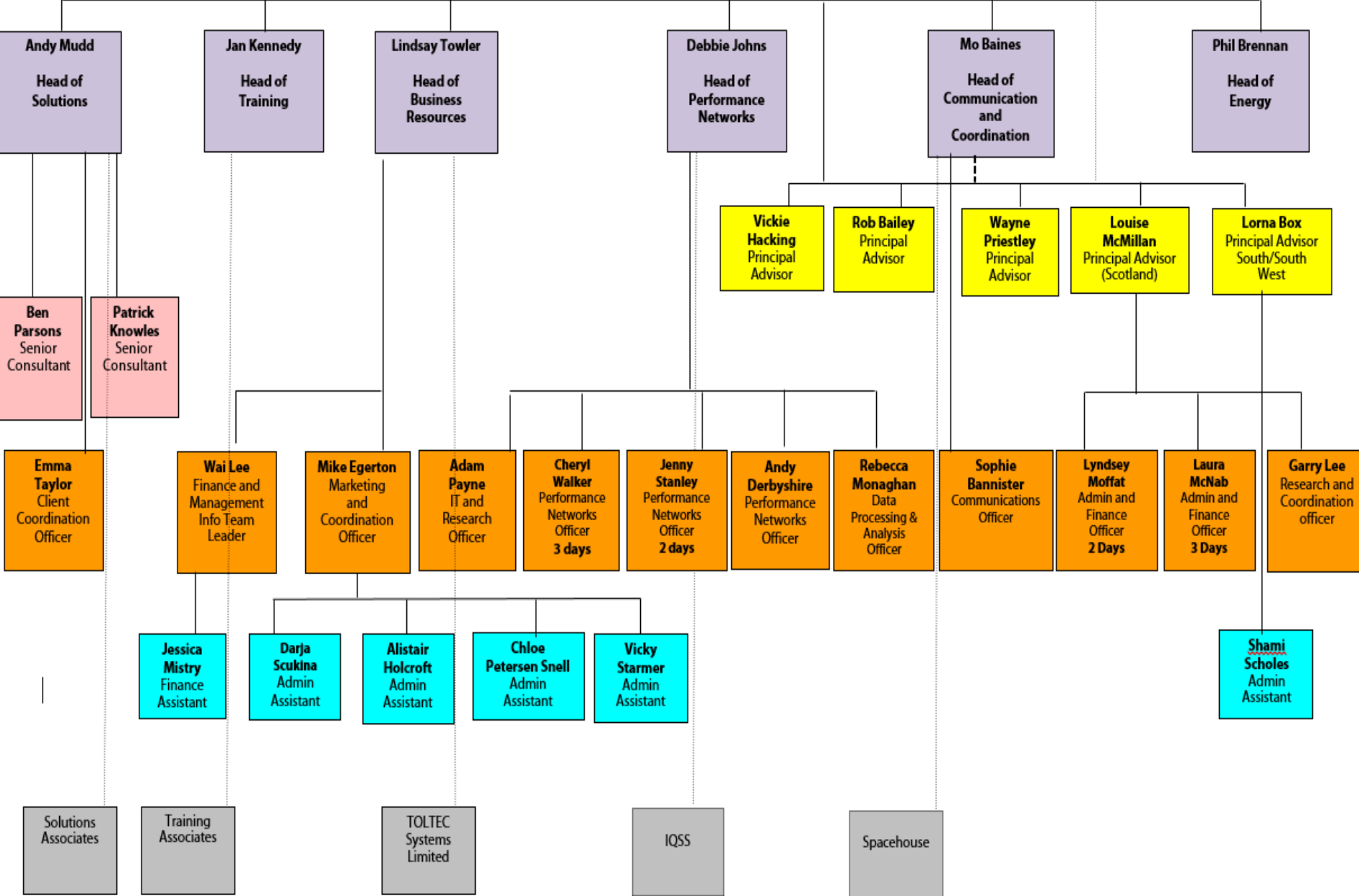
- 2017 to 2020
- Champion of Local Government Services
- Promoting the 'Ensuring Council'
- Premier Knowledge Hub
- Research, Media, Advocacy
- Building Alliances and Partnerships
- Sustainable growth



Achievements and issues

- Research programme
- Communications
- Government recognition
- IT infrastructure replaced
- Succession planning
- IIP Gold
- Growth across services
- £3.8m turnover
- Premises move

Paul O'Brien
Chief Executive



What does APSE do?



Membership resources



- 263 membership organisations
- 25,500 contacts
- 22,000 email contacts
- 350 email queries in the last 12 months
- Advisory groups (65) / seminars (38)
- 65 briefings
- Website
- Social media



Core services

- Performance networks
- Solutions
- Training
- Membership resources
- Business resources
- Energy

Advocacy



- Political parties
- Governments
- LGA
- CoSLA
- NILGA
- WLGA
- Civil servants
- Litter strategy
- APPGs
- House of commons
- Unions
- PAG
- Litter strategy
- UIFSM
- Highways

Research themes



- Housing
- Finance
- Senior officers roles
- Municipal entrepreneurship
- Commercialisation
- Governance and democracy
- Selling services to schools
- TCPA
- NPI
- De Montfort
- De Montfort
- CIPFA
- De Montfort / CfPS
- CIPFA



Delivering affordable homes in a changing world
Ensuring councils can meet local housing need

A circular illustration showing a variety of housing types, including modern high-rise blocks, traditional brick houses, and a row of beds, representing a mix of affordable housing options.

Accountability and scrutiny
The issues for local government in a changing political environment

A magnifying glass with an eye in the center is positioned over a circular area containing several icons: a person, a bar chart, a map of the UK, a pound sign (£), a briefcase, and a grid, symbolizing scrutiny and accountability.

Bringing order to chaos
How does local government hold to account agencies delivering public services?

A Venn diagram with four overlapping circles labeled SCRUTINY (blue), TRUST (green), TRANSPARENCY (red), and ACCOUNTABILITY (yellow). The central area where all four overlap is shaded.

The impact of devolution upon frontline services

A circular graphic divided into four quadrants, each with a different background color and icon: top-left (blue, wind turbine), top-right (green, trees), bottom-left (blue, water/waves), and bottom-right (green, solar panels).

Building homes, creating communities
Ensuring councils provide innovative solutions to meeting housing need

A circular illustration showing a diverse housing estate with various styles of buildings, from modern blocks to traditional houses.

Bricks-Mortar-Money
Property investment as a potential means of securing an additional and sustainable source of revenue

A large archway constructed from red bricks, each featuring a pound sign (£). The arch is set against a blue sky with white clouds and a yellow sun.



Contact details

Paul O'Brien, Chief Executive

Email: po'brien@apse.org.uk

Association for Public Service Excellence

2nd floor Washbrook House, Lancastrian Office Centre, Talbot Road,
Old Trafford, Manchester M32 0FP.

telephone: 0161 772 1810

fax: 0161 772 1811

web: www.apse.org.uk



INVESTOR IN PEOPLE



ISO 14001
REGISTERED FIRM

GB 11409



ISO 9001
REGISTERED FIRM

GB 11132



ISO 27001
REGISTERED FIRM

GB 14074