

# Aberdeenshire's Food Waste Collection Method

**Presentation to APSE Fleet, Waste and Grounds Seminar**  
18<sup>th</sup> May 2022

Andy Sheridan (Team Manager Collections and Cleansing)

# Background to Aberdeenshire

- Size – 2,437 sq miles
- Population – 261,210
- Housing Stock – 119,503
- 6 Administrative Areas
- 6 Operational depots
- Marr makes up 47% of the area but has only 15% of the population



# Service prior to 2013

- Two distinct services
- Urban households which were classed as settlements of 300 and above - Fortnightly waste and kerbside sort of paper, cans, plastics and glass
- Rural – Fortnightly waste and paper/Card picked up every 4 weeks

# Criteria for new collection service

Be compliant with the proposed Waste (Scotland) Regulations 2012

Provide a collection service for food waste for certain areas

Areas with population over 10,000

Areas with a population of 3,000 and within a 30 minute drive of a population of 10,000

This would make the collection of food waste mandatory to around 40,000 households

# Aims of new service

- Increase recycling with recognition the Carbon Metric implications of the various commodities
- Increase range of materials collected for recycling and the recycling performance of the Council
- Increase ease of use for the householder
- Provide an **equitable service to all** households
- Increase ease of service delivery
- Streamline our waste vehicle fleet

# 8 Options

- Recyclables –kerbside sorting or co-mingled
- Food Waste – dedicated food waste collection or collect with same vehicle picking up waste/recycling

# Why we chose this collection method

- Large geographical area to cover – one vehicle able to pick up food and recycling/waste at same time.
- Ability to provide a food waste collection to all residents weekly
- Standardised the fleet.
- Most cost effective option.

# New Service started in Banff on 4<sup>th</sup> Nov 2013

 **recycle** for Aberdeenshire

Aberdeenshire   
COUNCIL

## Your **NEW** recycling service

<b>Recycling bin</b>	<b>Kerbside caddy</b>	<b>Kitchen caddy</b>
		
wheeled bin for mixed recycling	outdoor and kitchen caddies with free liners for food waste recycling	

To the householder at  
Aughorthies Croft  
Cuttie Road  
Oldmeldrum  
Inverurie  
AB51 0DP

Services for north west Aberdeenshire  
**Start November 2013**

Wasteline 0845 600 3 900  
[www.aberdeenshire.gov.uk/waste](http://www.aberdeenshire.gov.uk/waste)  
[www.facebook.com/AberdeenshireWaste](http://www.facebook.com/AberdeenshireWaste)



## What can I put in my food waste caddy?

Leftovers from meals ✓

Leftovers from preparation ✓

Out of date food left in fridge or cupboards ✓

Liquids ✗

Oils ✗

### Types of food



Dairy ✓



Meat and bones ✓



Chicken and bones ✓



Fruit ✓



Vegetables ✓



Bread ✓



Rice and pasta ✓



Fish ✓

Please place your outdoor caddy at the kerbside on your normal collection day. It will be collected weekly along with your refuse or recycling.

## What can I put in my new recycling bin?



Batteries will go in a bag that you can leave on top of your bin.

You will be able to use your recycling bin for food and drink cans and foil, plastics (including yoghurt pots and food trays), paper and cardboard. A detailed list will be available in your information booklet before the new service commences.

### What happens next?

Your new recycling bin will be delivered soon. Please do not use it until you are notified of the start of the new service by letter in late October. It will then replace blue and black recycling boxes (urban) or your blue-lidded paper recycling bin (rural). Instructions for uplift of old bins will follow, but you are welcome to keep old recycling boxes to store materials in.

Just after you receive your service start letter, an outdoor food waste caddy and kitchen caddy with liners will be delivered to your door, along with an information booklet giving full details of the new service and how to use your new containers. The information is also on our website.

Wasteline 0845 600 3 900  
[www.aberdeenshire.gov.uk/waste](http://www.aberdeenshire.gov.uk/waste)  
[www.facebook.com/AberdeenshireWaste](https://www.facebook.com/AberdeenshireWaste)

# Pod vehicles















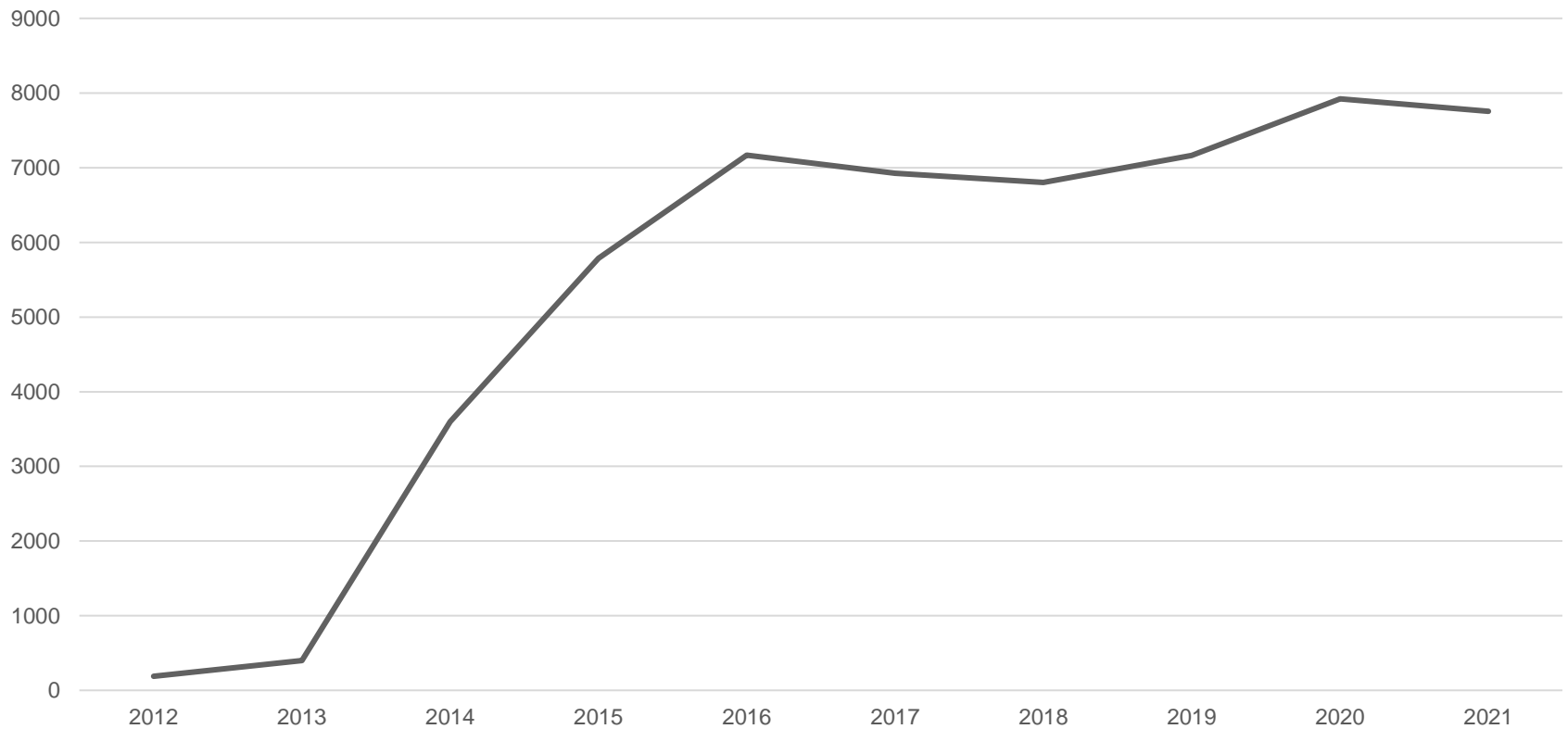






# Tonnages

Food waste tonnages 2012-2021



# contamination

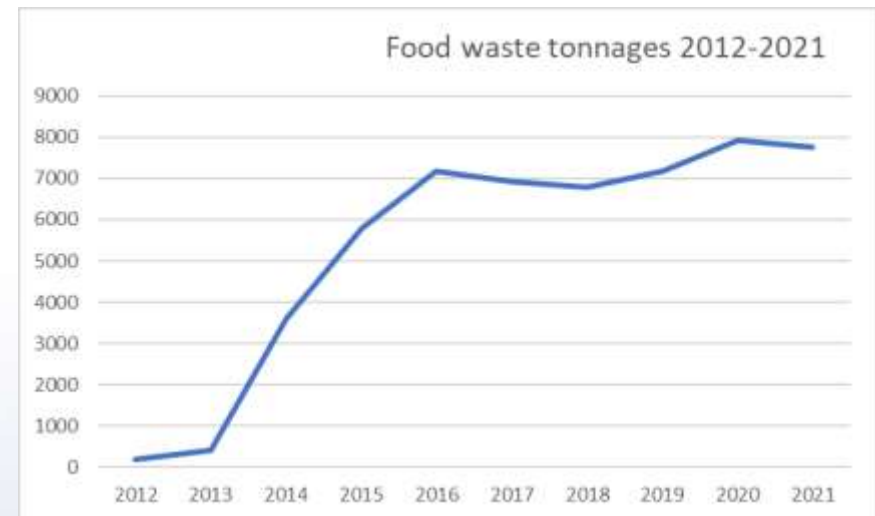
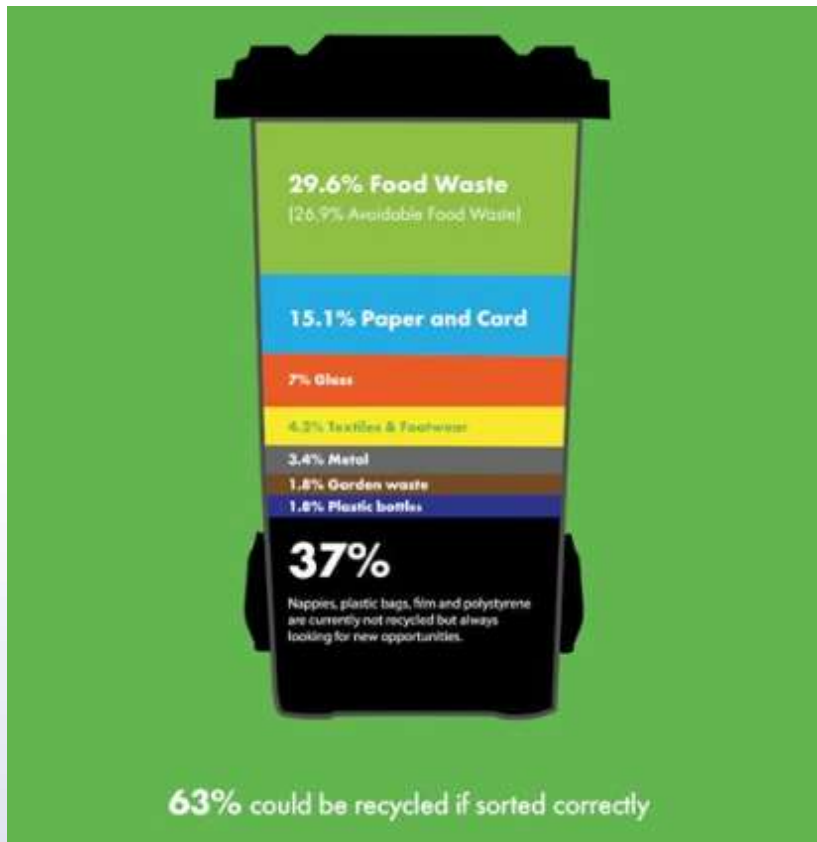


# Participation





# Waste analysis



# New Service starting 2023





# 3 weekly collection cycle

- Week 1: Food waste caddy and non-recyclable 240L waste bin
- Week 2: Food waste caddy and 240L blue lidded recycling bin for paper, card and cardboard.
- Week 3: Food waste caddy and a new 180L orange lidded recycling bin for mixed containers.