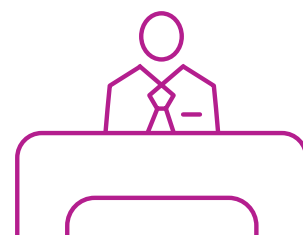




Many APSE Returns: APSE Office Remobilisation

From 29 June APSE is commencing a gradual transition back to office working. We are planning this with staff safety as our number one priority; putting a number of measures in place which we feel will make it safer and reduce the risk of infection within the APSE offices. Guidance on returning to the office with new social distancing measures has been mailed to our Manchester-based staff and will be adapted when we have gained access to our Hamilton and Oxford offices. The safety of those who work with APSE is our highest priority so everything will continue to be kept under review. Should there be any changes, we will update our website and notify you immediately.



APSE Local Government Commission 2030 Catch Up

On Thursday 25 June we were delighted to be joined by our APSE Local Government Commissioners and Executive for a big catch up of what has taken place so far - reminding ourselves of the themes that have emerged during our evidence gathering sessions. There was much to discuss – reorganisation and devolution, finance and taxation skills, career pathways and representation, transparency and accountability - and the Commission looks forward to seeing how we can put principles into practice?



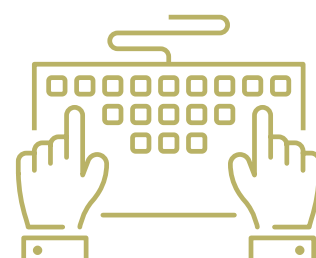
LOCAL GOVERNMENT
COMMISSION
2030

For more information about the work of the Commission and how you can get involved [click here](#).

Membership Resources

We are now setting up our online Advisory Group meetings. These meetings - FREE for APSE members - are an excellent shared learning opportunity for those who work in local government. For more information about the services we cover and upcoming dates [click here](#).

If you have further suggestions for support to feed through to our advisors please email Mo Baines on mbaines@apse.org.uk



CORONAVIRUS
PROTECT YOURSELF & OTHERS

Supporting frontline services:
Visit APSE's COVID-19 online
Information Hub for regular updates



Congratulations and a Warm Welcome to Estate Research – APSE's Newest Approved Partner

APSE is delighted to welcome Estate Research as the newest member to our Approved Partner scheme. Established in 2001, Estate Research is a firm of International Probate Genealogists who specialise in locating missing beneficiaries and assets to estates. Estate Research offer a complete worldwide service backed up with their own in-house expertise; enabling them to complete research quickly and thoroughly. Over the last 19 years Estate Research have provided free genealogy and probate services to the public sector, this includes local authorities, hospitals and coroners.



For more information about this exciting new partnership [click here.](#)

Spending on Parks and Neighbourhood Services in Scotland: Latest APSE Research

APSE Parks are the lungs of our community, However, cuts in spending since 2010 has left many of these valuable green assets fighting for breath. A new report by APSE Scotland and The New Policy Institute examines what has happened to spending on parks and open spaces by Scottish local authorities. To provide context, the report also looks at spending on the wider group of local authority neighbourhood services - the services that local authorities provide that are neither education, social care nor housing. To celebrate the launch of the report, APSE held a free online discussion group on 16 June.



To download the report and view the highlights from this discussion [click here.](#)

#HomesAtTheHeart Campaign

APSE has joined the National Housing Federation's campaign and signed an open letter to Chancellor Rishi Sunak MP to put good quality, affordable housing at the heart of our social and economic recovery.

[You can read the letter here.](#) The letter to the Chancellor was written into an [article in The Times](#) and Inside Housing has also reported the letter; the Editor, Martin Hilditch has written a [comment piece](#) explaining why IH is supporting #HomesAtTheHeart.





Groundbreaking Market Boost for Renewables Ignites Local Authority Climate Emergency Action

As you will know, heat is an important area to address in local authority climate action plans. It is necessary to find alternatives to gas heating in order to meet a net zero carbon target and a widely recognised technology for doing so is ground source heating. APSE Energy partner Kensa informs us about developments in the market, which will provide a major boost for renewable heating, advancing heat pump research and development programmes, specifically around district heating shared ground loop array installations, and funding zero-cost heating infrastructure. This also offers a unique opportunity for local authorities to achieve their zero carbon goals at a faster pace. The article from Kensa can be accessed [here](#).



PlotBox Announces the Appointment of Andrew Clark as Chairman of the Board

PlotBox, the international death care management application focussed on helping cemeteries and crematoriums operate to world class standards, announces the appointment of Andrew Clark as Chairman of the Board. Andrew Clark succeeds Interim Chairman Graham Paterson who held the post for the past year. You can learn more about the appointment [here](#).



Help Keep the Distance by Getting in Touch with Fife Council's Print and Sign Service

Fife Council's Print and Sign Service currently undertake signage and printing works for Stirling Council, NHS and a number of trusts. All of the artworks within their products booklet can be altered to suit individual needs. Sizes, colours and wording can be altered on request. The Service can print any artwork a customer supplies (PDF format preferred) on any of the products shown within the brochure.



For more information [click here](#).



Using Data to Help with Budget Setting

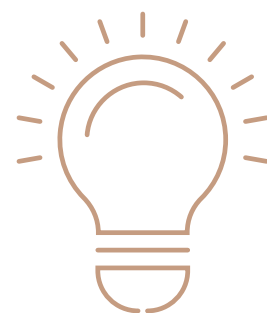
APSE Performance Networks are launching an additional service to Performance Networks members this year. We are collecting data between April and June 2020 on the impact of COVID-19 on frontline services to assist with budget setting. Through online working group meetings we will decide on 10 short questions for this with a report to be produced in September 2020. This will certainly help the sector understand the comparable picture on the impact of COVID-19 and provide an explicable context to city treasurers as budgets are reviewed.



For more information about this please contact Debbie Johns, Head of APSE Performance Networks at Djohns@apse.org.uk

Are You Developing a Commercial Strategy? If not, APSE Training Can Help!

Many local authorities are re-evaluating their commercial strategies to adapt to new circumstances and to develop new and sustainable economics. In response to the issues raised, APSE's popular masterclass "Developing and Delivering a Commercial Strategy (CPD)" is now available online with dates from July 2020. This one day course is delivered over two half-day sessions. Designed for middle and senior managers, this masterclass will equip you with an understanding of the legal frameworks enabling you to make best use of local authority powers, analysis of risks and opportunities, awareness of the cultural dynamics and the tools and models you need to develop a robust and sustainable commercial strategy. For programme and booking information [click here.](#)



For more information contact Fiona Sutton-Wilson on FSuttonWilson@apse.org.uk

You can view the full range of courses [here](#). All courses take place on Microsoft Teams so all participants need is access to the internet on a laptop, desktop or smart device.



Solar Energy: Past, Present and Future...

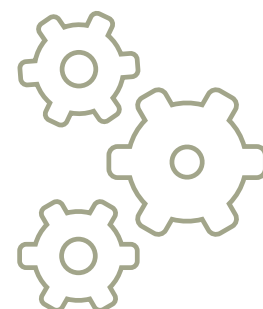
At APSE Energy we regularly prompt local authorities to keep up to date information about their assets and to maximise the use of them. Solar is a case in point. Land based solar is ideal and rooftop solar can be a great investment too. Putting your panels on someone else's hired roof is a further option that local authorities are considering as is investing in land outside of your area. APSE Energy can get you started as these projects must have a site survey; a financial model; a customer for the energy; an understanding of grid access and planning related issues and; a report which spells out all of these issues and recommends a way forward. We can help local authorities get to this decision making stage for a relatively small fee.



If you wish to know more about what the main issues are and how we can help, please contact Phil Brennan, Head of APSE Energy on 0161 772 1810 or at pbrennan@apse.org.uk.

Underground Refuse Systems Virtual Briefing: 14 July 2020, 10.00am-1.00pm

As Liverpool City Council, supported by APSE Solutions, prepares to launch the UK's first multi-supplier URS procurement framework in the autumn, this virtual briefing event is your chance to find out what the fuss is about. The webinar will include presentations from APSE showing how URS is working across Europe and in an increasing number of locations in the UK. Participants will also discover how URS is to contribute to transforming the terraced streetscape in Liverpool. Details of the forthcoming framework and how to use it will also be provided.



This webinar is free to APSE member authorities. [Click here to register your place.](#)

For more information contact Andy Mudd, Head of APSE Solutions, on amudd@apse.org.uk.



Stay safe everyone!

