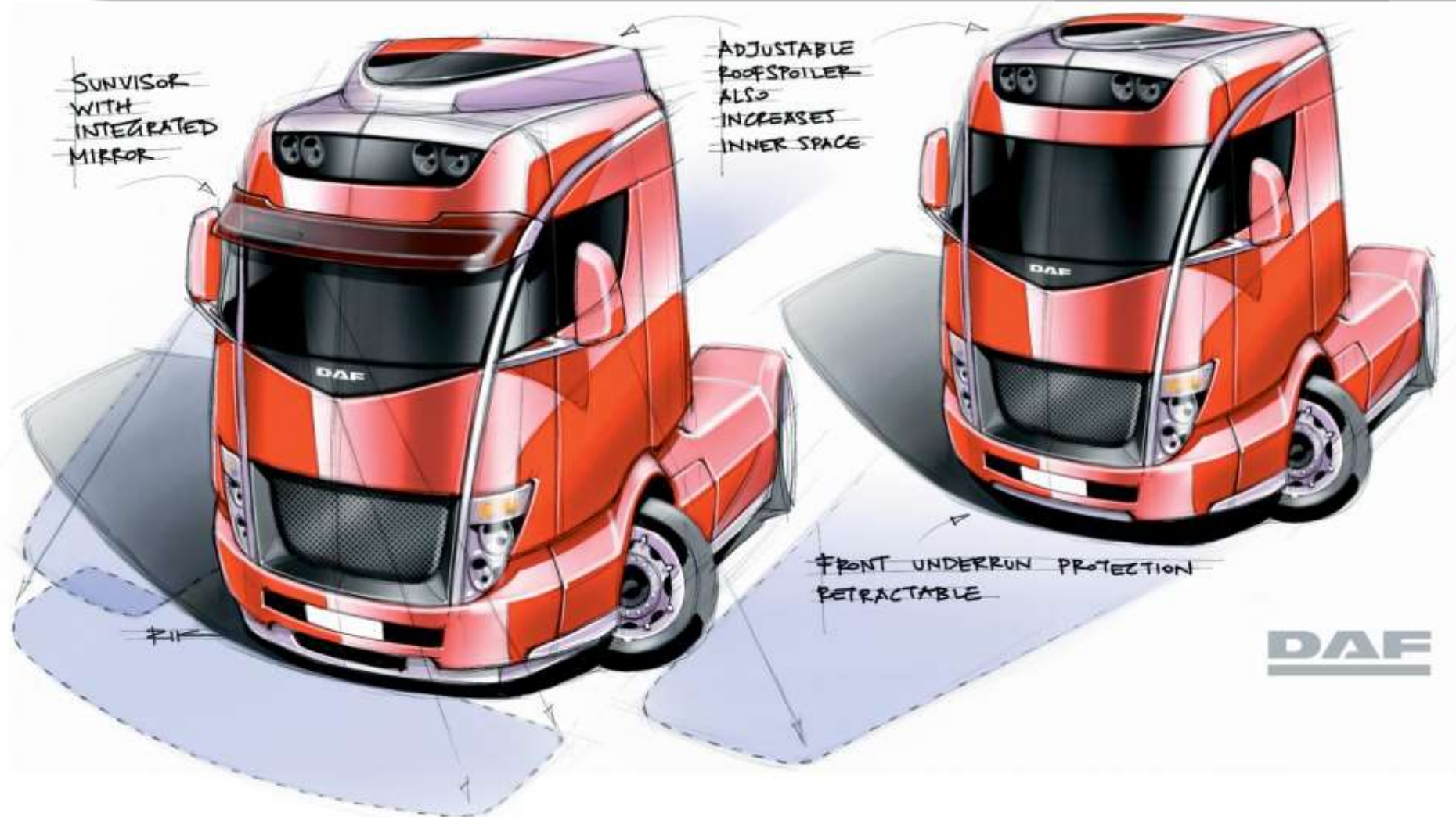


## James Turner

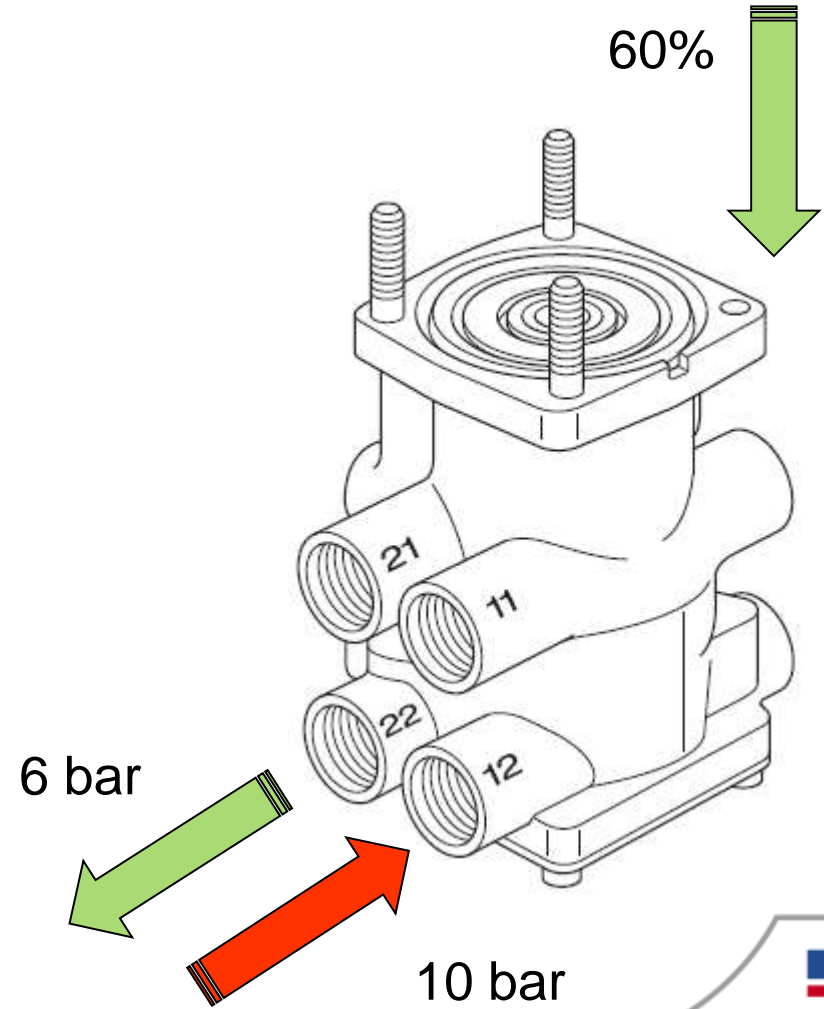
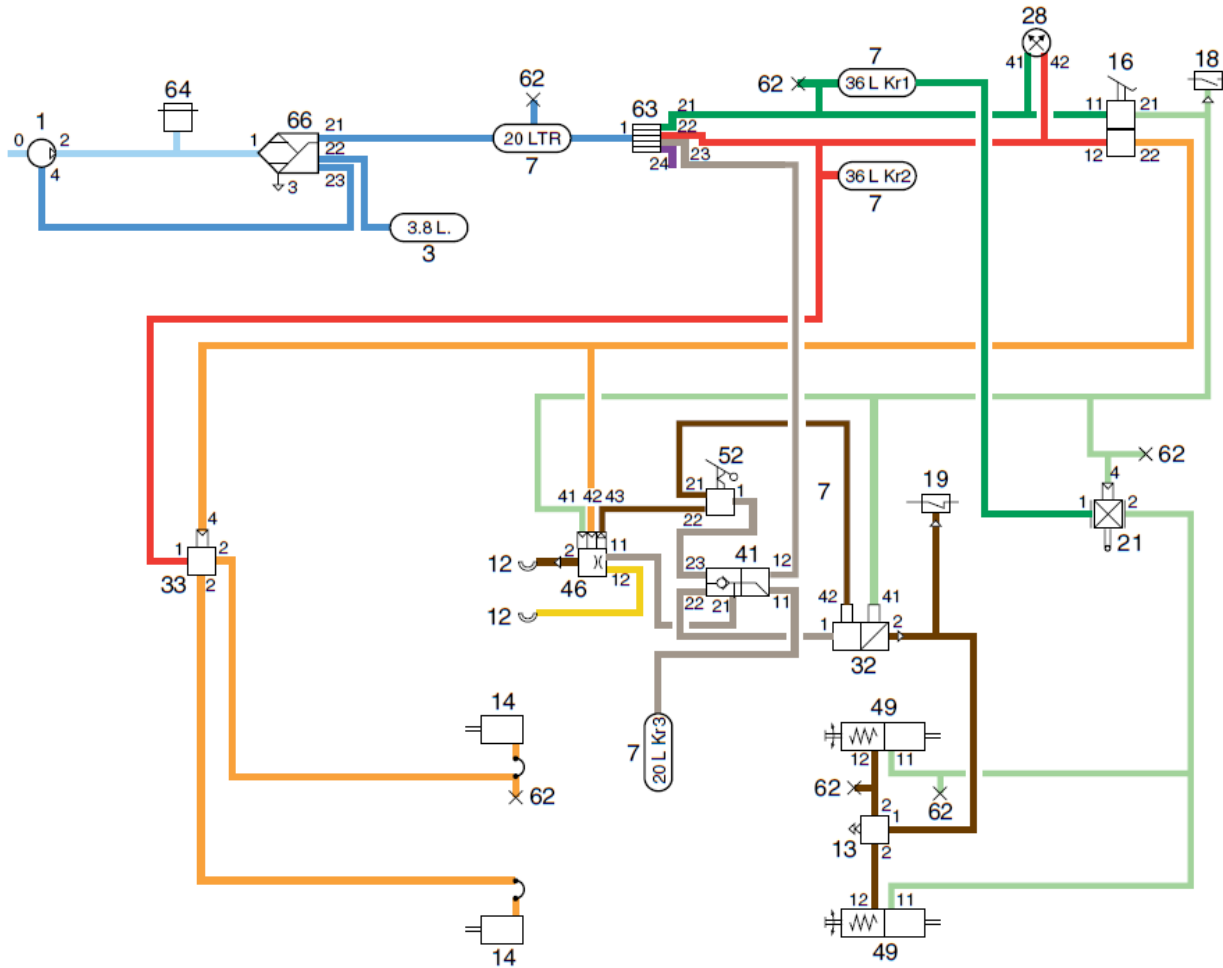
Product Marketing Manager DAF Trucks Ltd



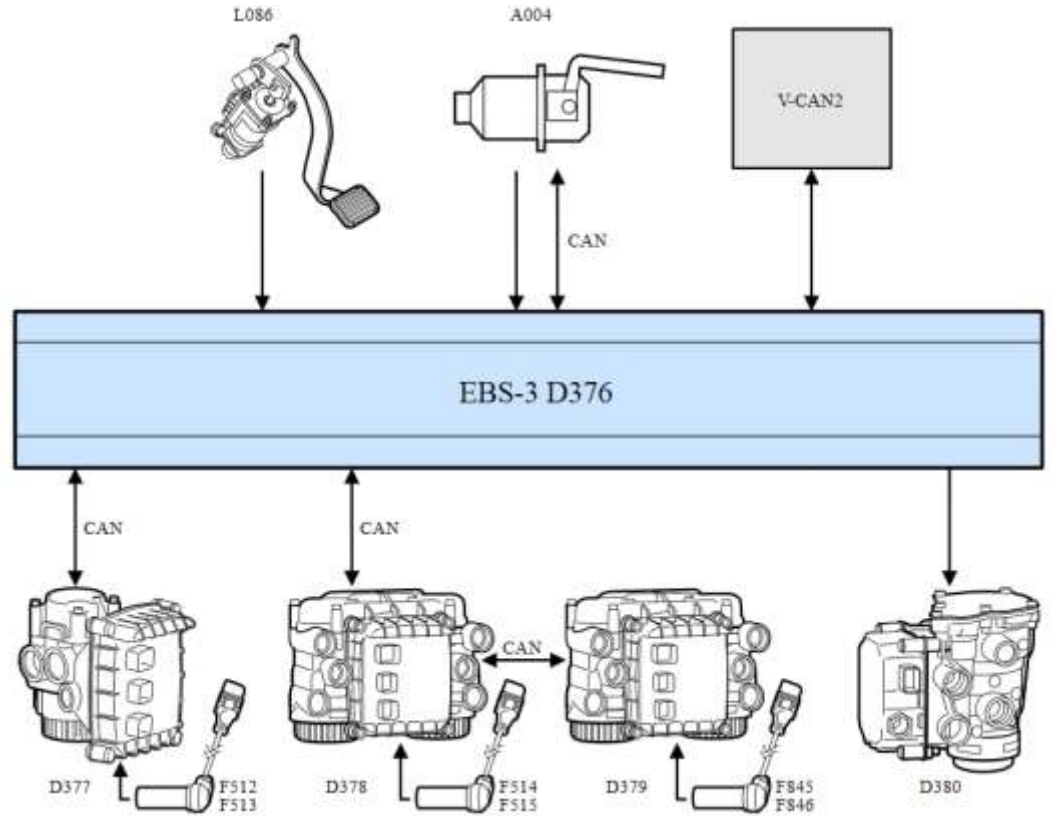
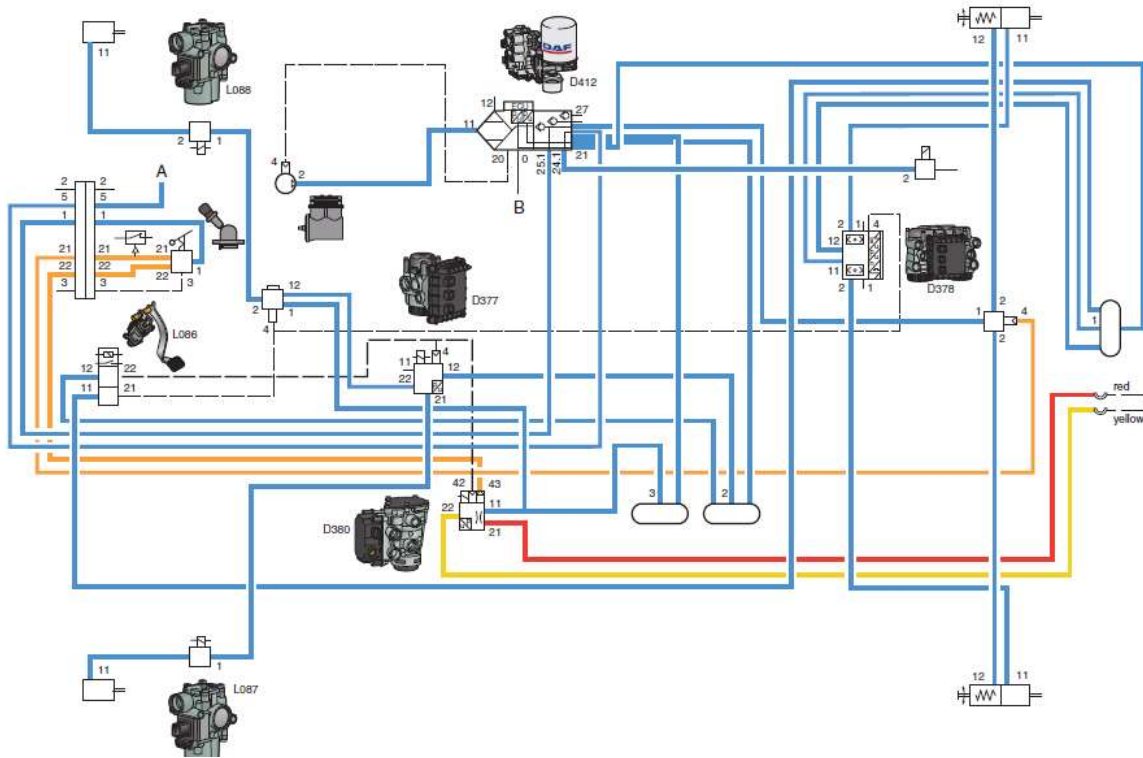
# ✓ WHAT DOES THE FUTURE HOLD FOR NEW TECHNOLOGY?



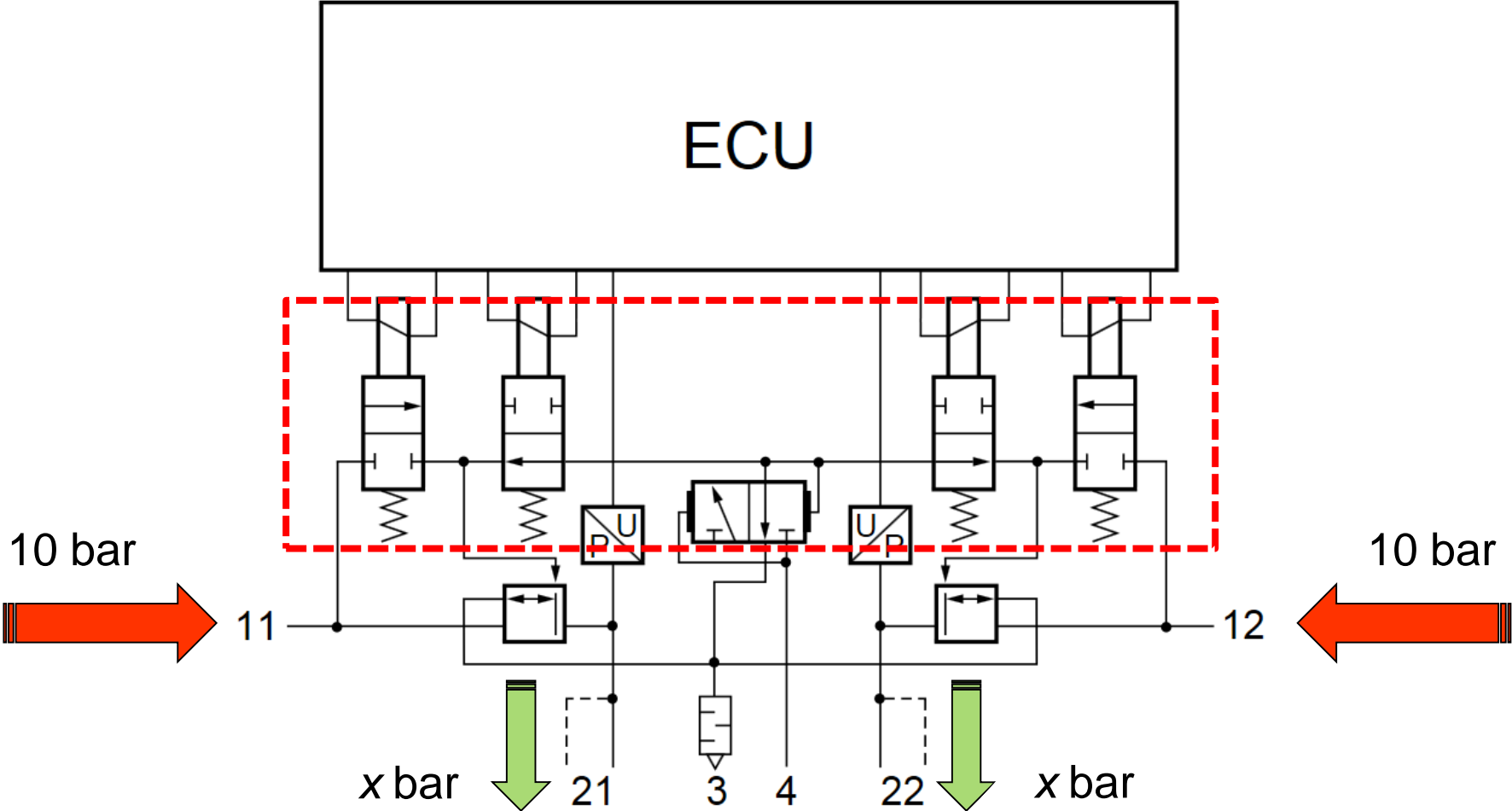
# FULLY PNEUMATIC BRAKING SYSTEM



# EBS (ELECTRONIC BRAKING SYSTEM) V.3 [2016]

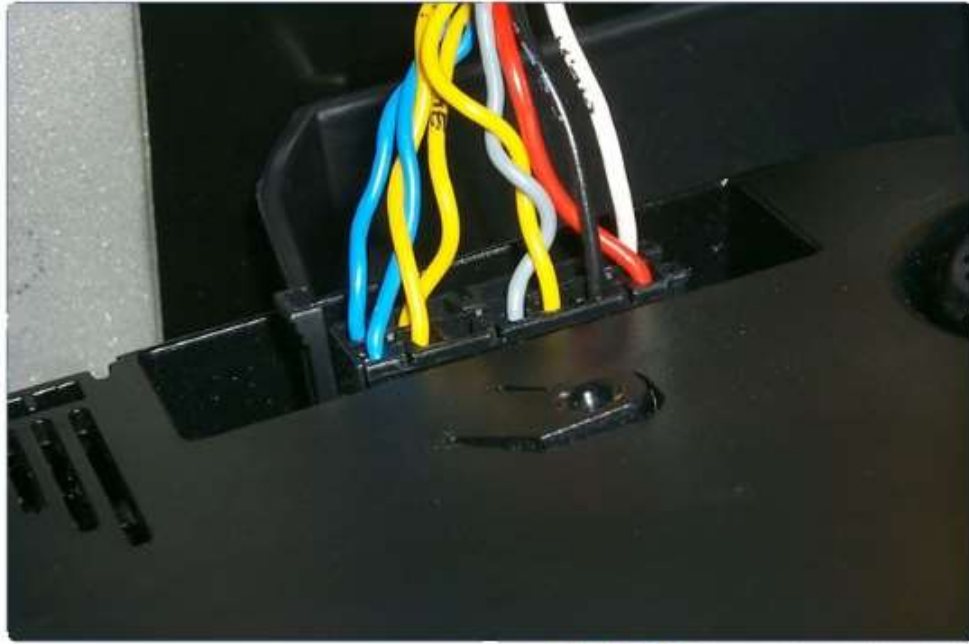


# VALVE OPERATION

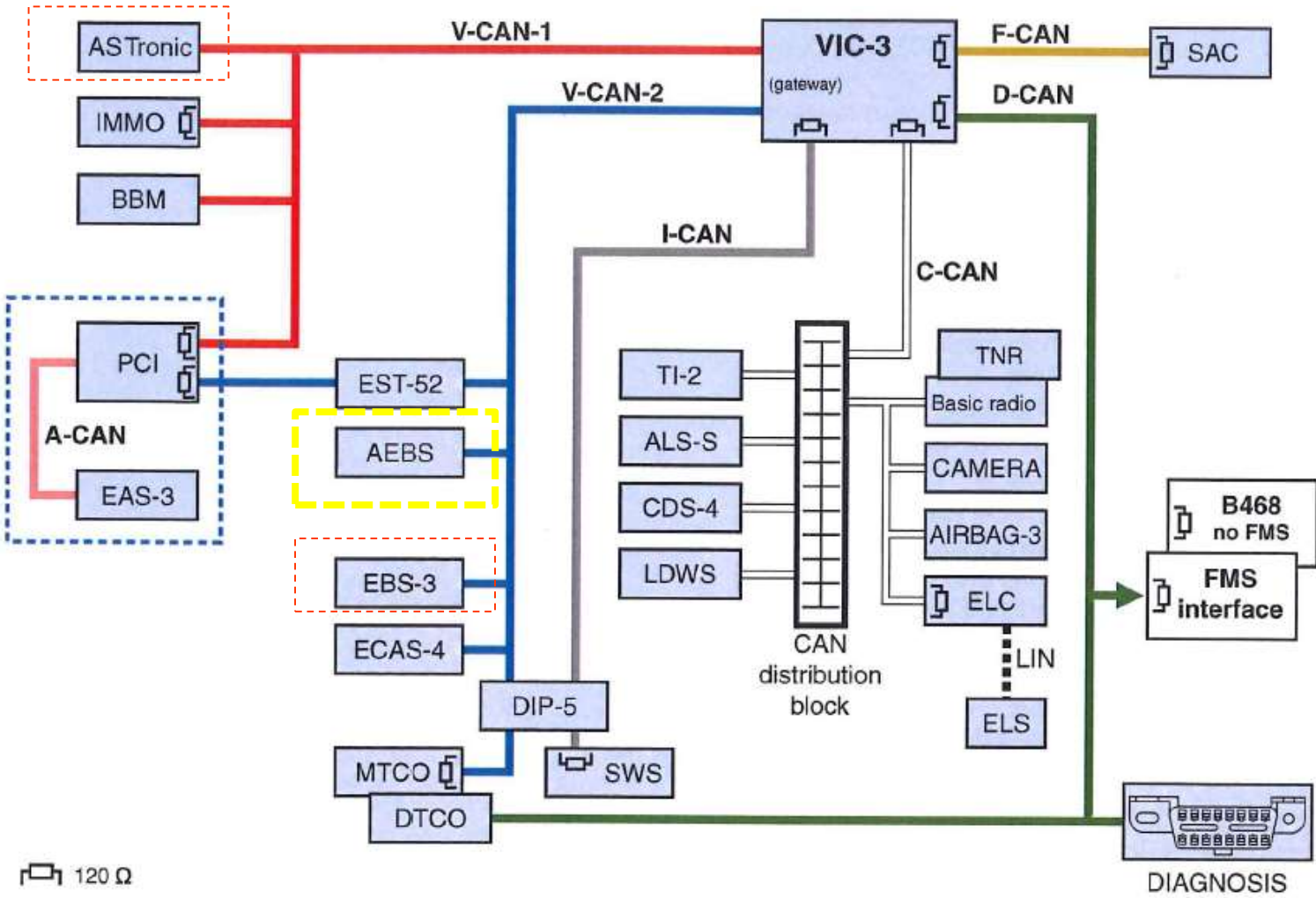




# CAN COMMUNICATION



# CAN BUS

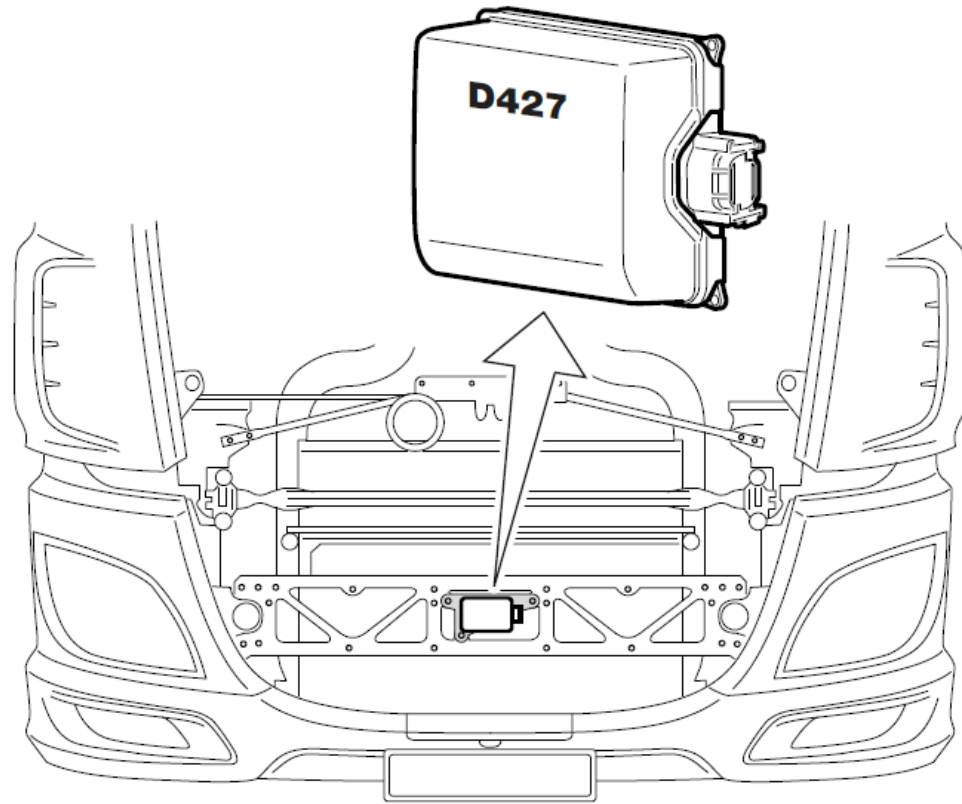


# AEBS (ADVANCED EMERGENCY BRAKING SYSTEM)



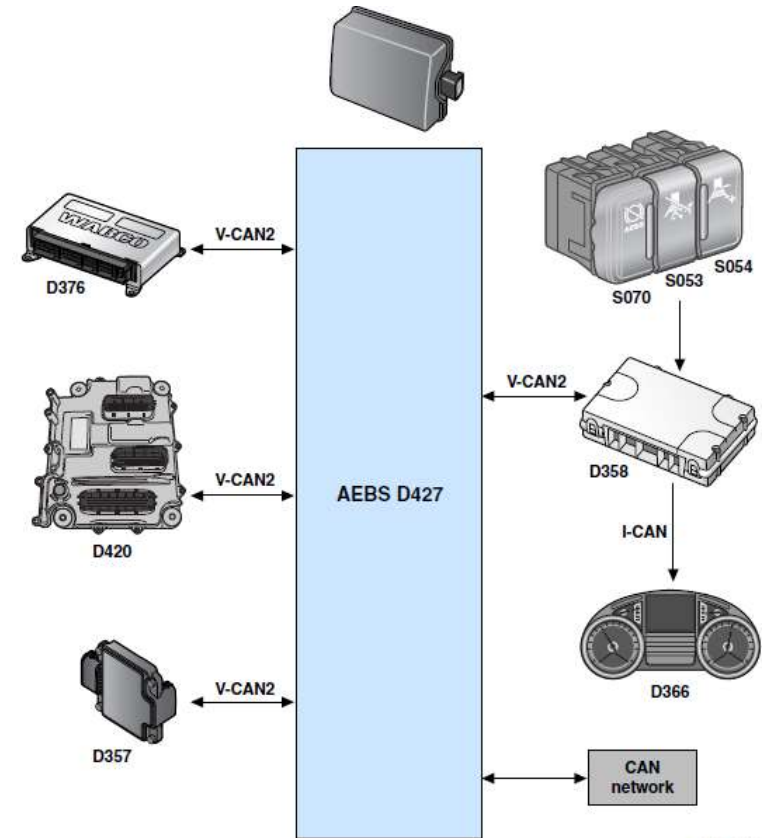


# AEBS (ADVANCED EMERGENCY BRAKING SYSTEM)



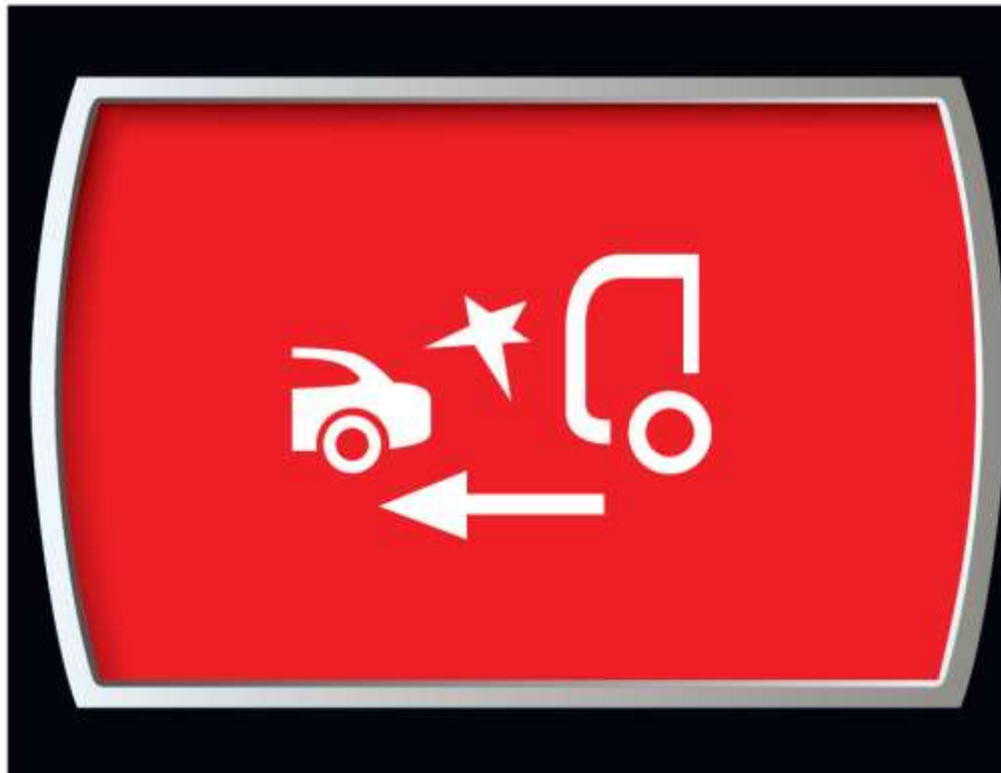
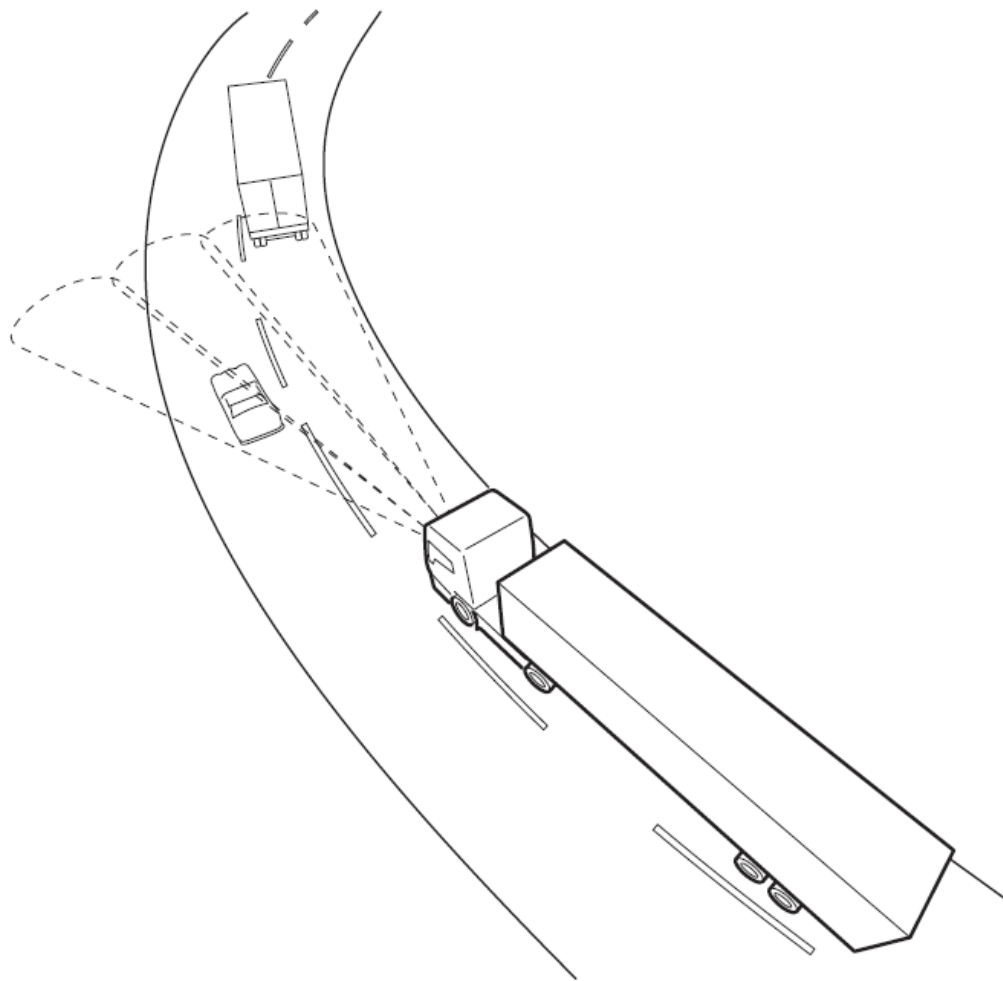
K103328

Location of the AEBS ECU

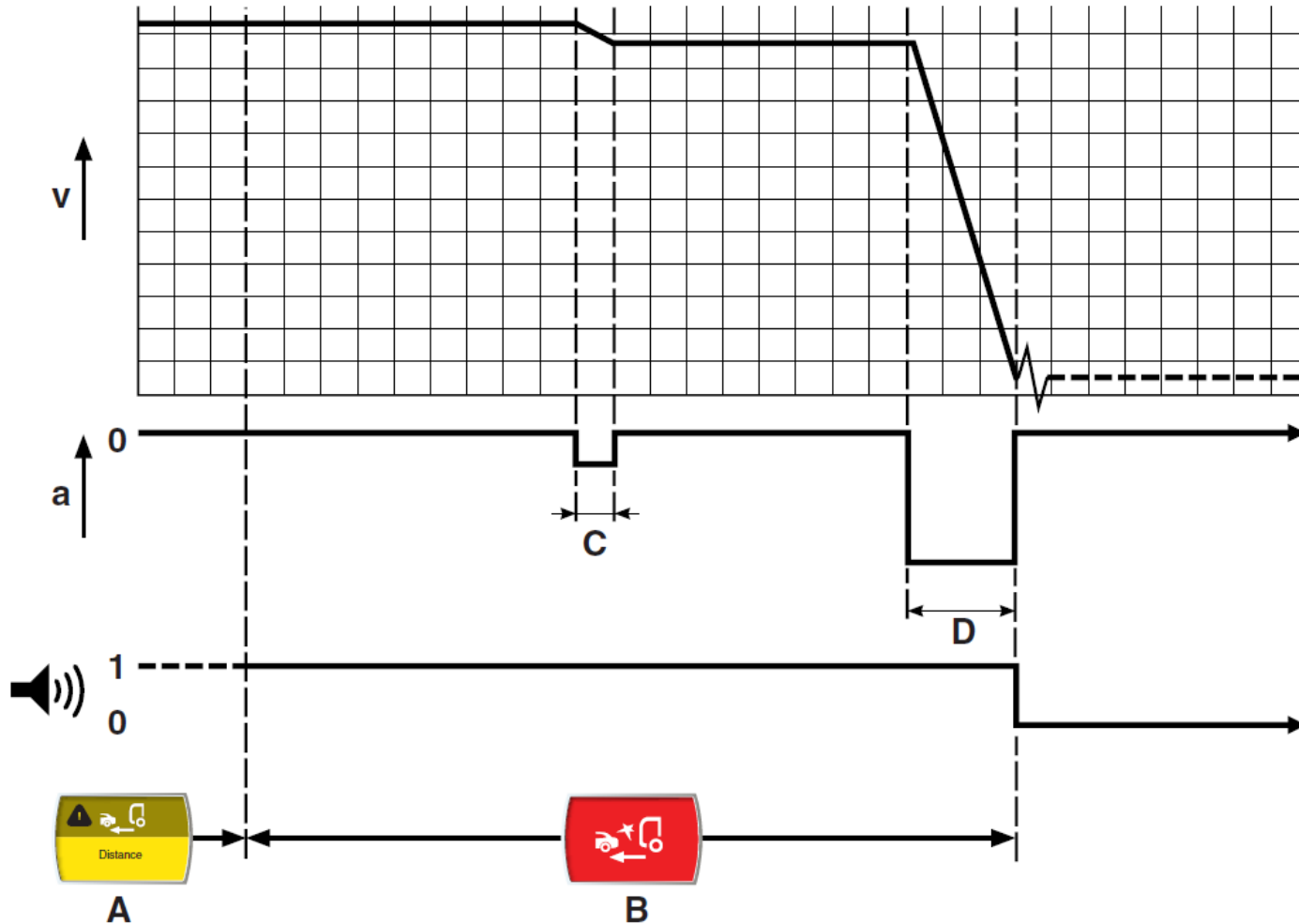


FR01601-2

# FCW (FORWARD COLLISION WARNING) & AEB



# FUNCTION SEQUENCE



**v** – *Vehicle Speed*

**a** – *Brake Application*

**A** – *ACC warning*

**B** – *Instrument panel warning*

**C** – *Haptic braking*

**D** – *Emergency braking*



XF

XF

EcoTwin

DAF

EUROPEAN TRUCK PLATOONING

EcoTwin

24-BBR-7

DAF

R

XF

EcoTwin

EcoTwin

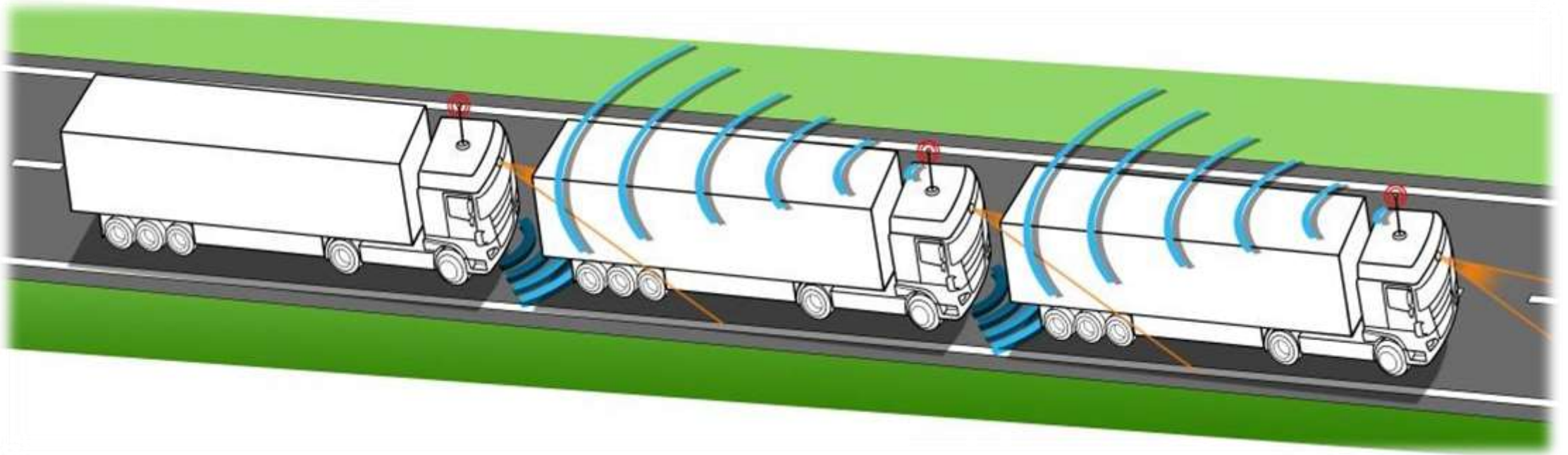
DAF

R

XF



# PLATOONING





A close-up, low-angle shot of the front of an orange DAF truck. The focus is on a silver horizontal bar across the grille, which features the 'DAF' logo in a bold, sans-serif font. The truck's body is a vibrant orange, and the background is a plain, light color.

**DAF**