

Open+ Peterborough

Peterborough City Council:

Peterborough City Council:

The future for Libraries



Libraries campaigners seek second judicial review of Lincolnshire cuts, Peterborough has found a different way by listening and working with our staff and customers to keep all of our libraries open, and open for longer at a reduced cost

Peterborough Libraries are now open longer with open+



Like us on
[vivacitypeterborough-libraries](https://www.facebook.com/vivacitypeterborough-libraries)

General enquiries 01733 864 280
[vivacity-peterborough.com/libraries-and-archives/open](https://www.vivacity-peterborough.com/libraries-and-archives/open)



Open + meeting the needs of local communities in the long-term

In 2014, Peterborough residents were asked 'what is most important to you about a library service?' We received three strikingly significant responses:

- Books on the shelves 87.2%
- Location 70.4%
- Access to information 55.6%

Libraries are an overwhelmingly local service, with 75% of library users travelling less than 2 miles to use a library, and 43% of library users walking to the library.

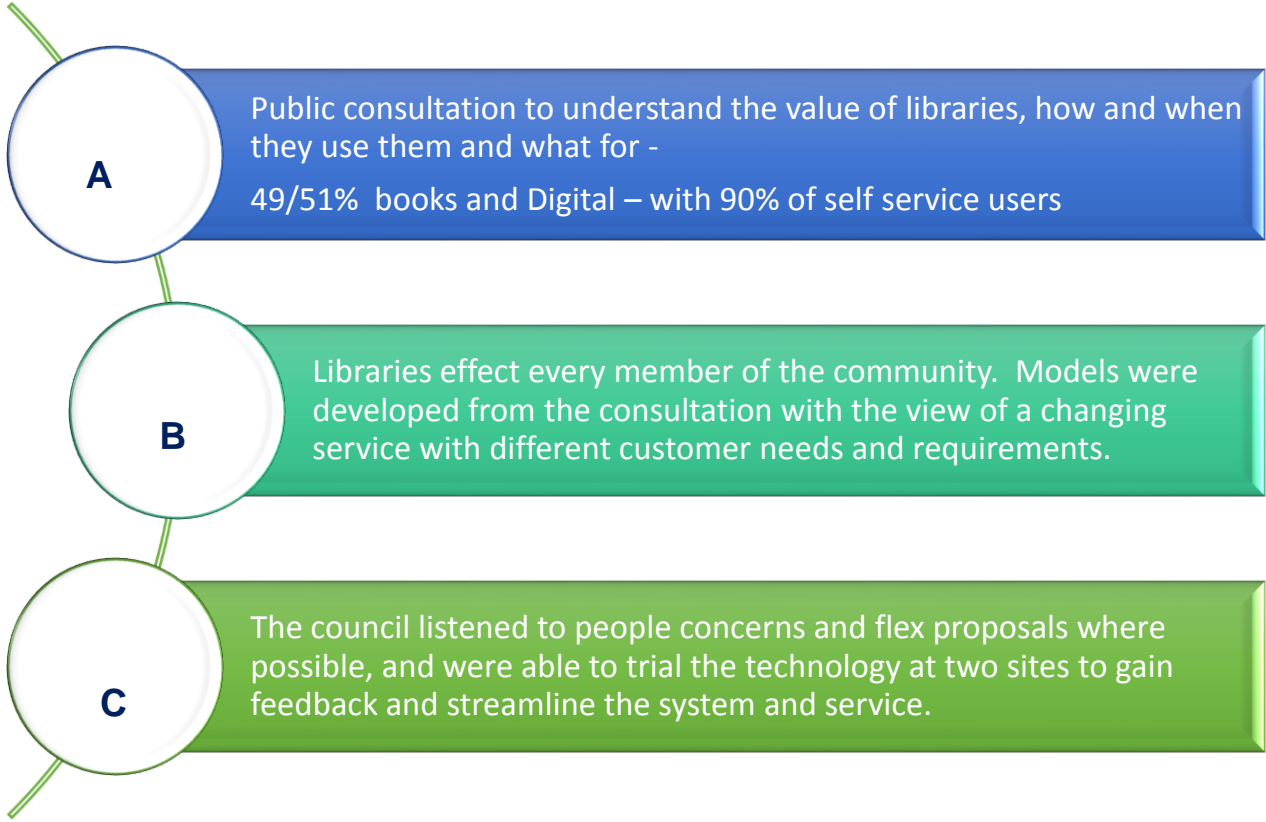
Users were also asked what factors would encourage more use of the library service.

Accessing the library building outside normal hours receiving the highest response: 74%

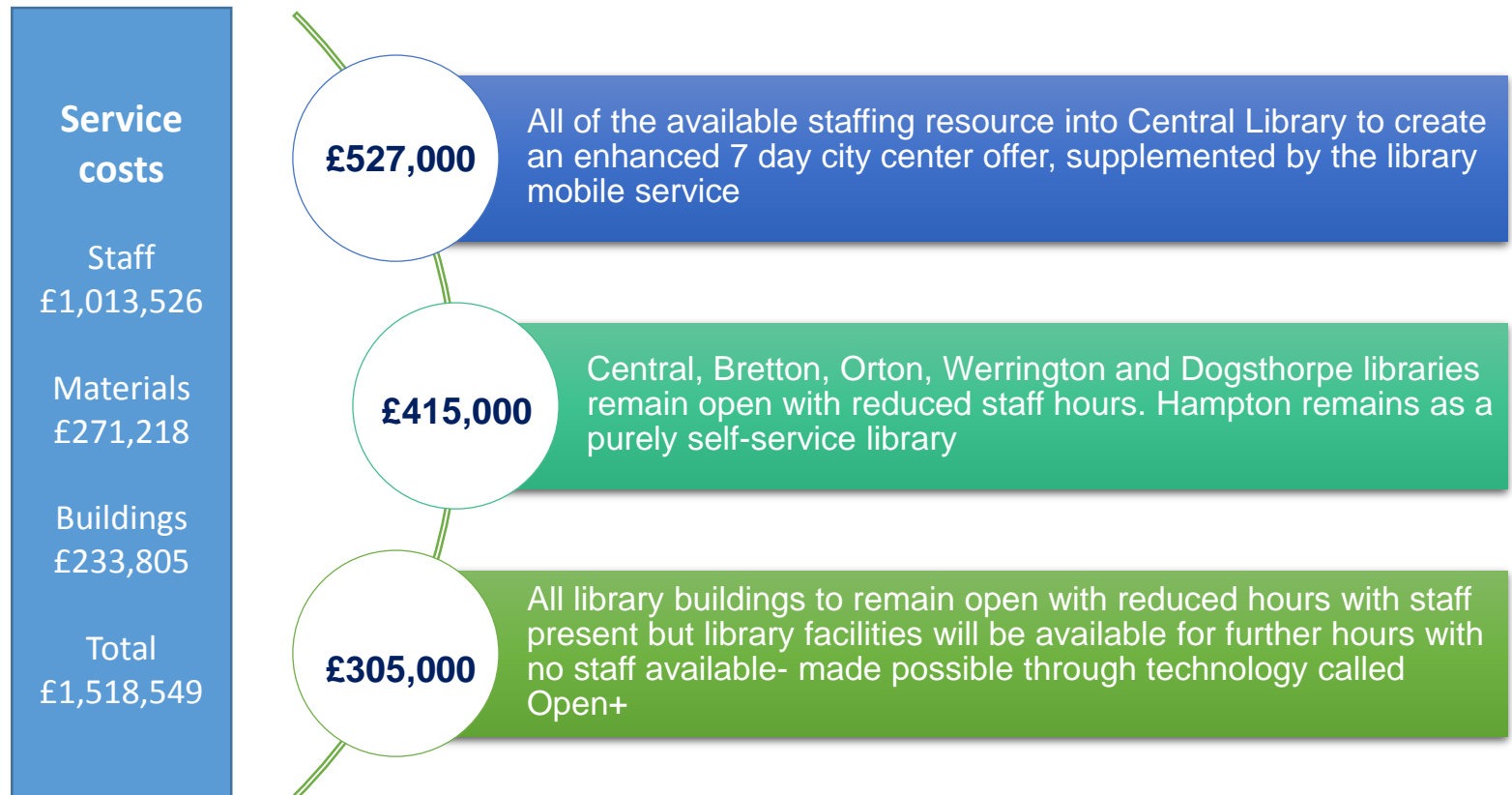
Peterborough City Council:

Full Cross party and public support

All library buildings to remain open with reduced hours with staff present but library facilities will be available for further hours with no staff available- made possible through technology called Open+



Peterborough City Council:



What is Open +

The Council was passionate about finding a library model for the future whereby it would not have to compromise on service access and choice. The council is digitally focused and spoke to Bibliotheca about open+. We explored it as different way forward for all of our libraries’.

After considering the more extreme alternatives, which all would have resulted in leaving local library users at a disadvantage and the closure of at least 5 buildings, we discounted that in favour of Open+



Peterborough City Council:

Saving

- Option 3 reduction of £305,000 to total library budget
- £275,000 from staff, 15 voluntary redundancies
- £30,000 from Materials

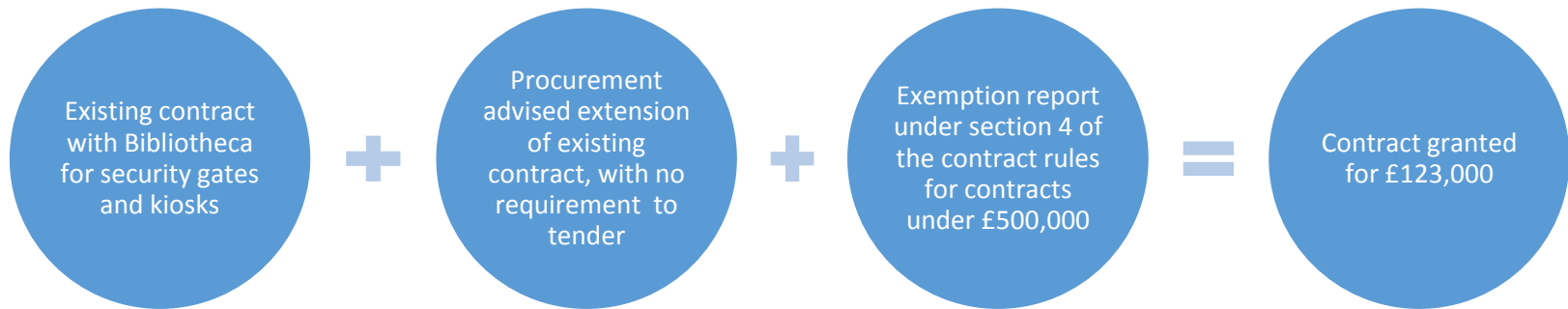
Capital

- £170,000 capital
- £123,000 for Open+ system
- £45,000 for cabling and doors
- £2,000 for enabling works, including internal locks

Revenue

- Ongoing support costs £1,500 per library
- £13,500pa
- Cost of capital over 8.5 years £24,600

Peterborough City Council:



Peterborough City Council:

		Our preferred option Open+		
LIBRARY	Current opening hours	Staffed Hours	Self-service hours	Total Staffed and self service hours
Central	40	33	22.75	55.75
Bretton	29	16	21.25	37.25
Dogsthorpe	29	14	19	33
Eye	21	10	14.5	24.5
Hampton	21	14	61	75
Orton	29	16	22.25	38.25
Stanground	21	10	21.5	31.5
Thorney	21	10	15.25	25.25
Werrington	29	16	25	41
Woodston	21	10	15.25	25.25
TOTAL	261	149	237.75	386.75
Available weekly hours	261	386.75		

Consultation 2,

60.3% support it
39.7% oppose it

Of the 39.7% that oppose the preferred option people said:

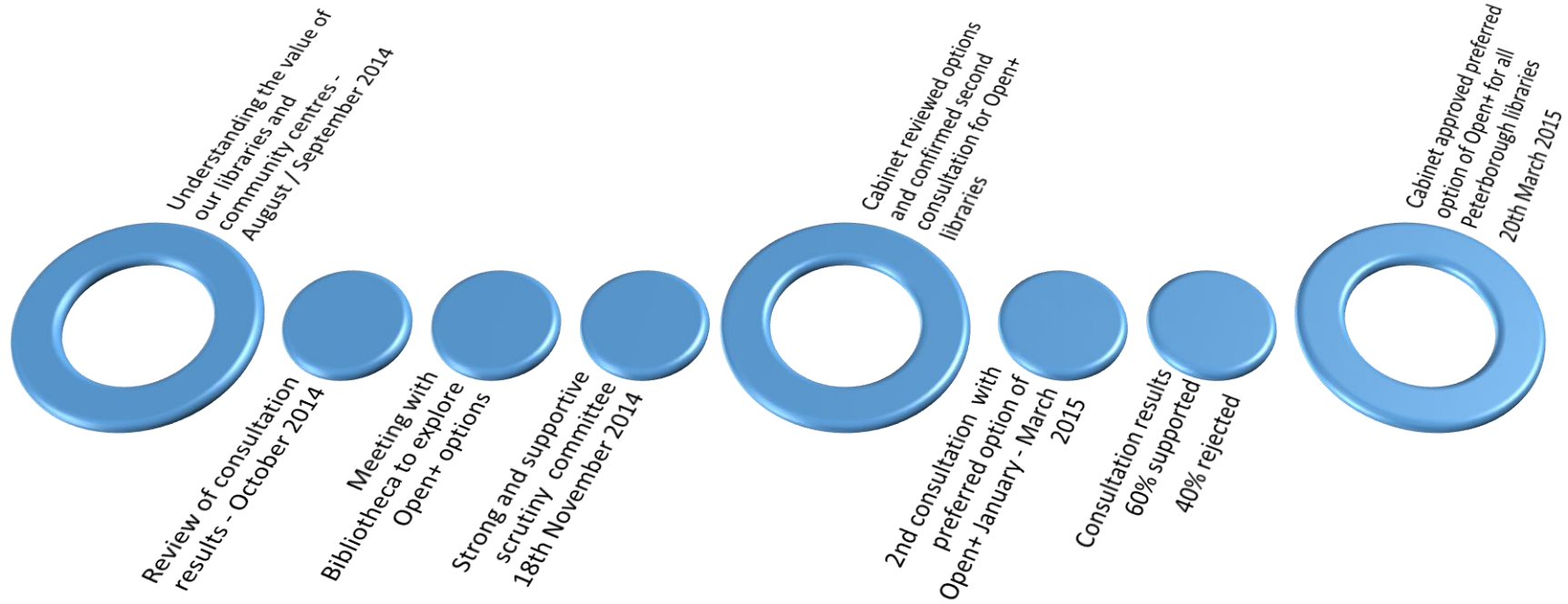
18% a perception of lack of safety

7% Smaller libraries should close

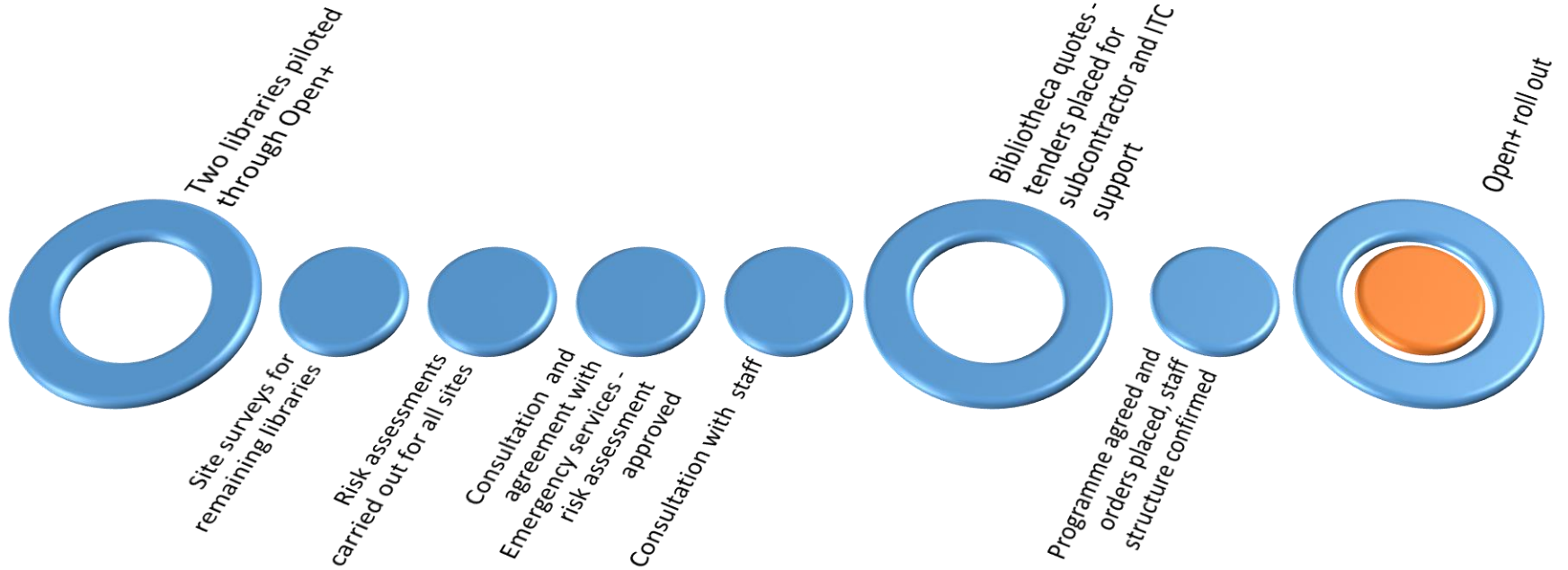
29% Seek to make the overall savings requirement differently – but not specified how

46% suggested proposals that were already covered within the preferred option.

Peterborough City Council



Peterborough City Council



Peterborough City Council

Peterborough Libraries are now open longer with open+



Like us on [vivacitypeterborough-libraries](https://www.facebook.com/vivacitypeterborough-libraries)

General enquiries **01733 864 280**
[vivacity-peterborough.com/libraries-and-archives/open](https://www.vivacity-peterborough.com/libraries-and-archives/open)



Join open+ for free and use your membership card to:

- Borrow books, eBooks, DVDs and CDs
- Use computers for **FREE** in all libraries
- Renew and request books from home
- Reserve items online at peterborough.spydus.co.uk



open+ gives you access to library materials, public computers and quiet, creative spaces to meet or study on a full self-service basis while the building is unstaffed.

You'll need to register for open+ to use the library during unstaffed hours by talking to a member of staff at your branch.

Please note: Under 16s are unable to register for open+, but they are welcome to come in to the library during open+ hours if accompanied by a parent or guardian.



[vivacity-peterborough.com/libraries-and-archives/open](https://www.vivacity-peterborough.com/libraries-and-archives/open)

Peterborough Central Library

	Staff on site hours			
	Open	Start	Finish	Close
Monday	09:00*	10:00	17:00	19:00*
Tuesday	09:00*	10:00	17:00	19:00*
Wednesday	08:00*	14:00	17:00	19:00*
Thursday	09:00*	14:00	17:00	19:00*
Friday	09:00*	10:00	17:00	19:00*
Saturday	09:00	09:00	15:00	15:00

Contact us on: **01733 864 270**

*Self Service hours available for registered open+ users

Bretton Library

	Staff on site hours			
	Open	Start	Finish	Close
Monday	09:30	09:30	12:30	17:00*
Tuesday	CLOSED			
Wednesday	09:00*	13:30	17:00	17:00
Thursday	09:30	09:30	12:30	17:00*
Friday	09:30*	13:30	17:00	17:00
Saturday	08:30*	11:00	14:00	16:00*

Contact us on: **01733 864 291**

*Self Service hours available for registered open+ users

Peterborough City Council:

Peterborough City Council adopts new technology to keep all of their library open and open for long

- All of Peterborough Libraries remain open, when other councils are taking the option to close – meeting the Library act with no review
- All evidence for the model tracks back to the public consultation, the council listened and responded, and achieved full cross party and public support.
- Libraries are now open 126 more hours than before with a reduced cost to the service of £285,000 for the first 8.5 years and the £305,000 after.
- Open+ provides the best of both worlds, libraries open with increased access and is simple and seamless to use and fully accessible.
- The system can be controlled from a central point by one member of staff and is integrated with existing systems.
- Increased library membership and usage up 3% from May 2015 with greater use of the libraries from community groups and council workers.
- Over 15,500 sign ups from a library membership of 32,000 in the first year
- Open for two years on the system

Q&A Panel

Lisa Roberts : Head of Culture and Leisure