



Fermanagh & Omagh
District Council
Comhairle Ceantair
Fhear Manach agus na hÓmaí



Funded by
UK Government

Fermanagh & Omagh District Council Leisure & Wellness Centre

SPACE & PLACE

INTRODUCTIONS & OVERVIEW

John Boyle

Director of Community
and Wellbeing



Fermanagh & Omagh District Council
www.fermanaghomagh.com

Mafalda Brennan

Architect



SPACE&PLACE

www.space-place.com

mafalda.brennan@space-place.com

OVERVIEW

- Background
- The vision and objectives behind the redevelopment
- The Journey so far
- How the project aims to support health and wellbeing outcomes
- Community engagement and consultation activity
- The anticipated impact on participation and inclusion across the district
- Sustainable Communities | Passivhaus
- Passivhaus | Health and Wellbeing Design



BACKGROUND

- The Forum was built in 1976
- Many items of Major Plant & Equipment were beyond useful economic life. There were increasing running costs and maintenance year on year as elements within the building began to fail
- Regional sports facility
- £70m Investment
- £20m funding from the UK Government
- 25m Pool / Learner Pool / Splash Pad / Sports Hall / Gym / Changing / Soft Play
- Start date June 2025
- Demolition and piling works complete.
- Works scheduled to complete Summer 2028.



VISION & OBJECTIVES

Design Excellence:

The development has been designed excellence aspirations, worthy of showcase status, within the context of affordability.



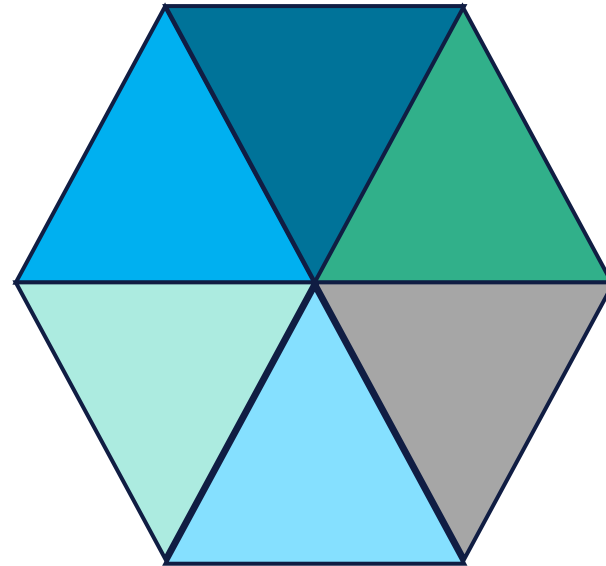
Sport & Leisure:

The development delivers an increased swimming provision in form of 8 lane pool and dedicated learner pool, spin studio with Fitness suite and main hall provision.



Design For All :

The design of the development creates an inclusive facility for all potential users of varying ages and abilities supporting the ease of their vertical and horizontal movement through the centre.



Sustainable Development:

The development has been designed to exceptional environmental performance to minimise, as far as possible, the carbon impact and energy usage as per the Passivhaus standard, all aimed at supporting the Council's commitment to playing its part in addressing the global climate emergency.

Building upon the Passivhaus South West College Erne Campus setting standard for new Public Sector buildings in Enniskillen



Create A Destination:

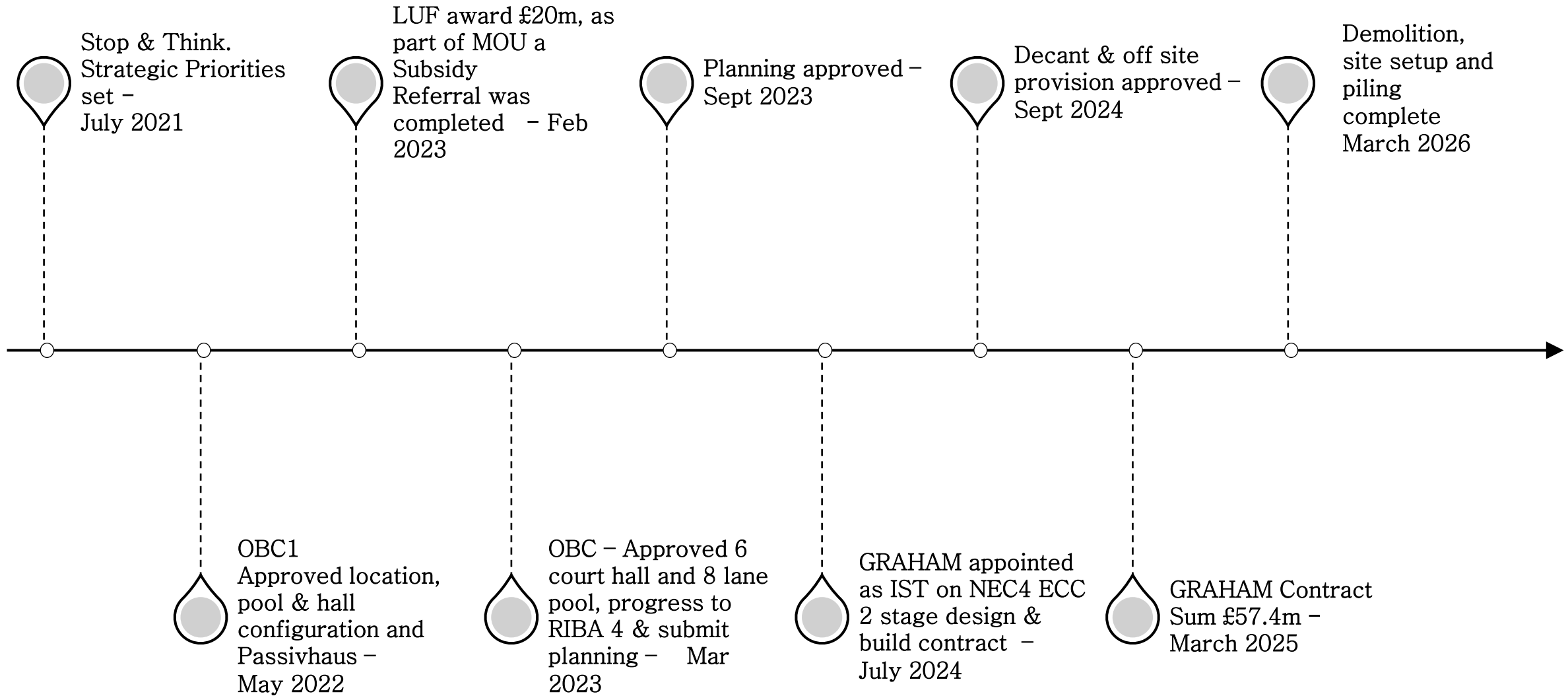
The development hosts splash pad and enhanced pool area for wet weather days for locals and tourists alike. The provision of new pontoon providing access to the water (for non-motorised craft), new destination play park and pump track all support recreation and tourism activities in Enniskillen.



Social Value:

Social value delivery to Fermanagh and Omagh District residents, groups, clubs and charities formed a core part of the procurement process.

THE JOURNEY SO FAR



HEALTH RELATED BENEFITS

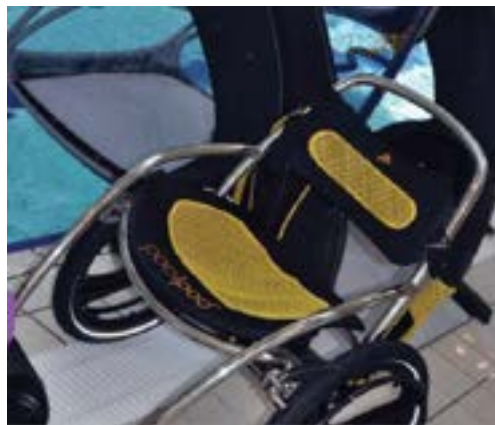
- Increase in membership numbers
- Increase in regular leisure centre users
- Increase in health intervention programmes
- Increase in health and wellbeing benefit among users through increased usage of redeveloped FLF
- Increased variety of programmed activity
- Increased participation by underrepresented groups, e.g. women and girls, those with a disability, disadvantaged areas, under 18, aged 60+, rural residents
- Improved provision to allow more people to lead healthier lifestyles with increase in Social Return on Investment (SROI)



ANTICIPATED IMPACT ON PARTICIPATION AND INCLUSION ACROSS THE DISTRICT

Inclusive Design:

- Sensory Room
- Accessible trails & paths
- Pool Pod
- Changing Places
- Accessible parking
- Accessible fitness suite and equipment
- Accessible spectator facilities
- Signs & wayfinding
- Assistive listening system
- Wheelchair sports
- Inclusive equipment within playpark



	Current	Proposed
Dry fitness classes inc spin	32 p/week	56 p /week
Learn to swim courses	30 p/week	88 p/week
Pre school swim course	2 p/week	12 p/week
Water based fitness classes	0 p/week	7 p/week
School swimming	30 p/week	36 p/week
Swim Gala's	3 p /year	6 p/ year

OTHER BENEFITS

In addition to delivering a high-quality leisure centre, the project will bring a wide range of long-lasting benefits to the district, including:

- Education and skills: Engagement with local schools, career pathways, and up-skilling
- Social value: Supporting community health, wellbeing, inclusion, and cohesion
- Sustainability: Industry-leading design reducing long-term environmental impact
- Economic impact: Jobs and business opportunities during and after construction
- Tourism boost: Attracting more visitors to Enniskillen and surrounding areas
- Enhanced visitor experience: A modern, welcoming, and environmentally conscious destination



COMMUNITY ENGAGEMENT & CONSULTATION ACTIVITY

Public Consultation / Surveys

- 2019 Survey
- 2022 Public Consultation (Planning)
- 2024 / 25 Survey
- Ongoing within Centre

Sport

- Swim Ulster
- Local Sports Groups
- Sport NI
- Lakelanders
- Erne Paddlers
- Park Run

Other

- Elected Members
- Statutory – WHSCT, EA
- Access & Inclusion

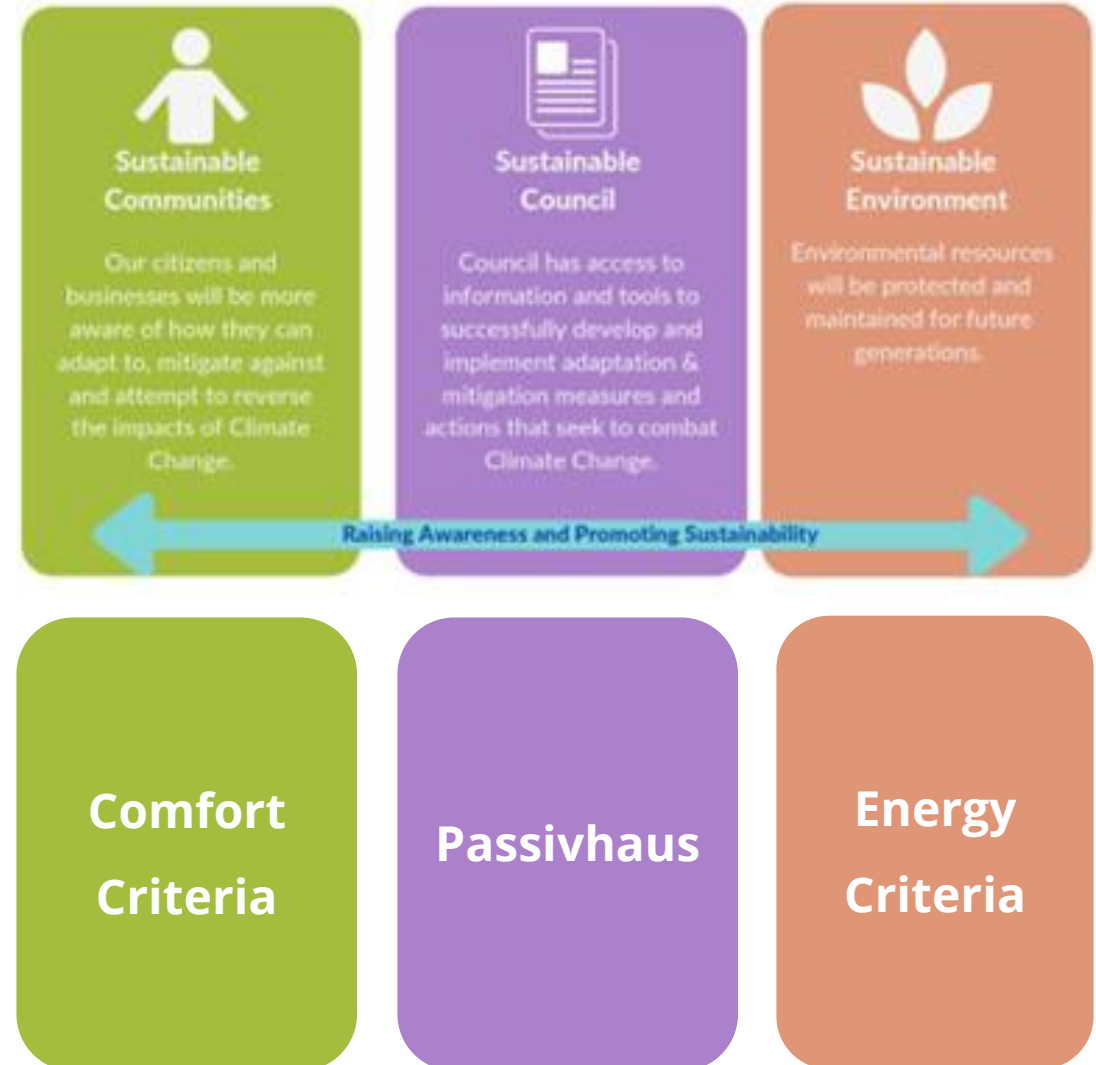


SUSTAINABLE COMMUNITIES

PASSIVHAUS

The FLF redevelopment has the potential to significantly contribute to the Council's carbon reduction commitments set out in the Climate Change and Sustainable Development Strategy.

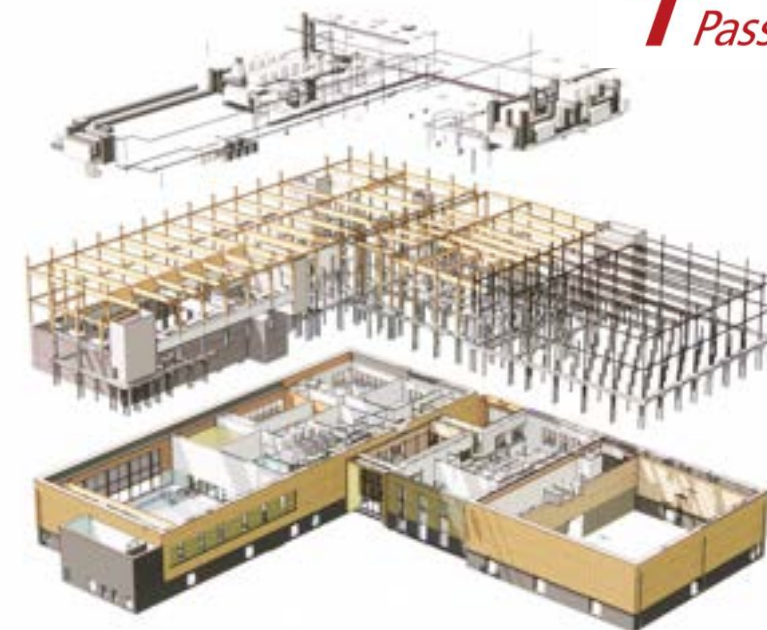
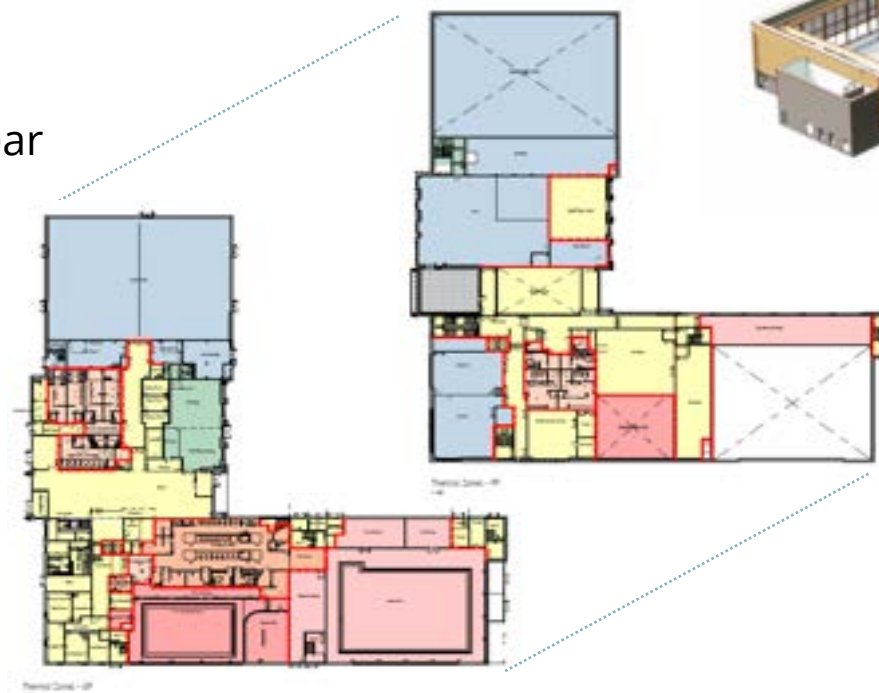
The aim of a Passivhaus building is to minimise the natural heat loss of the building to reduce the energy required to operate it.



PASSIVHAUS

Understanding the basics of:

- **Thermal zoning**
- **Rethinking how we service buildings:**
 - Reduce energy consumption
 - Recover energy
 - Reduce noise and wear and tear
 - Internal plant spaces
 - Reduce service runs
 - Micro filtration
 - Heat recovery
 - Reduce evaporation
- **Build Quality**



PASSIVHAUS

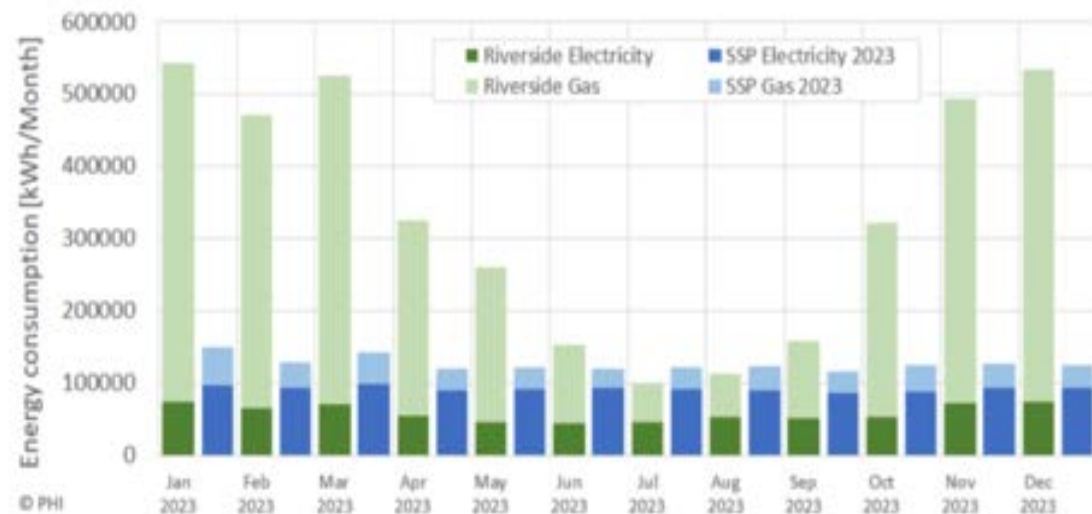
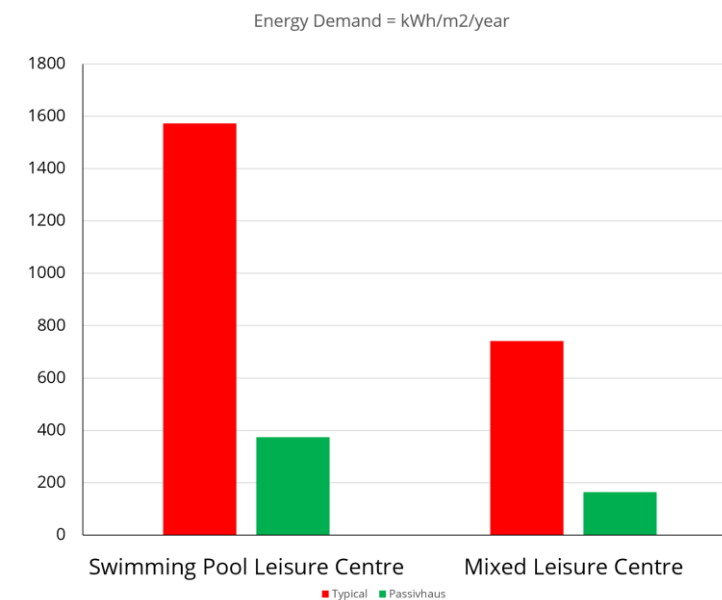


Figure 3: Comparison of monthly final energy consumption of Riverside and St Sidwell's Point Leisure Centres.

Energy consumption of St.Sidwells Point Exeter;

Its monitored energy data from 2023 was compared with reported energy consumption of the Riverside Leisure Centre, a different leisure facility also located in Exeter.

The energy results are clear to see, with our Passivhaus project's energy consumption shown in green compared to typical modern leisure centres.



PASSIVHAUS

HEALTH & WELLBEING DESIGN

Result: Not Just numbers

- Community
- Comfort
- Quiet acoustics
- Very high air and water quality in pool hall

ACTIVE COMMUNITIES

100m people visit SPACE&PLACE buildings.



Fermanagh & Omagh
District Council
Comhairle Ceantair
Fhear Manach agus na hÓmaí

SPACE & PLACE

Thank You

More details including newsletters and videos can be found on the FODC website

<https://www.fermanaghomagham.com/services/health-wellbeing/leisure-complexes/fermanagh-lakeland-forum/fermanagh-lakeland-forum-redevelopment-consultation/>