



# West of England Local Nature Recovery Strategy

APSE Parks Network Meeting  
14<sup>th</sup> January 2025

# Context

# LNRS in the West of England



# What is an LNRS?

- ‘New, England-wide system of **spatial strategies** that will **establish priorities** and **map proposals for specific actions** to drive nature’s recovery and provide wider environmental benefits’
- 48 Strategies across England, covering the whole country
  - Joined together, will map delivery of the national Nature Recovery Network
- **Public Authorities must take account of any relevant local nature recovery strategy**

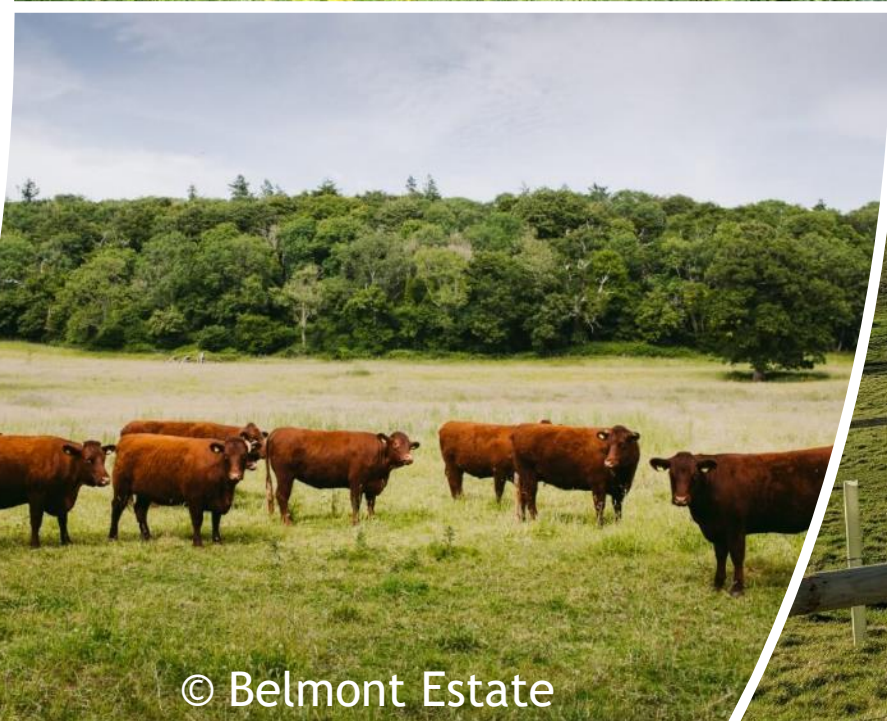
# What is an LNRS?

- Each strategy will:
  - agree **priorities** for nature's recovery,
  - map the most valuable **existing areas for nature**, and
  - map specific **proposals for action** (measures).
- Key outputs:
  - Statement of Biodiversity Priorities
  - Local Habitat Map

# (What the LNRS is not)

- An action plan
- A map of what *must* happen where or a restriction on how land can be used
- A restriction for development / other land uses

# How will the LNRS be used?



# LNRS and Planning


- Local Plans will need to ‘take account of’ the relevant LNRS
  - Not a red line for development; one of many pieces of evidence
- Mapped measures will be used for Strategic Significance multiplier of 15% in BNG
  - Only habitats that match a mapped measure will receive the 15% uplift

# LNRS Outputs

# Statement of Biodiversity Priorities

- **Priorities** are **outcomes** that are most important for nature recovery in WoE
  - E.g. ‘There is more, better and better-connected woodlands, wood pasture and parkland’
- **Measures** are **actions** to achieve the priorities
  - E.g. ‘Allow natural regeneration of scrub and woodland close to existing semi-natural woodlands, which provides important edge habitat’.
- Each **Priority** may have several **Measures**
- [Link to webpage](#)

# Statement of Biodiversity Priorities

-  **There is more nature-rich space in towns and cities, especially in areas that do not have good access to nature-rich spaces and/or that are more deprived.**

Increase the area of parks and public spaces managed for nature, including establishing more wildflower meadows or areas of unmown grass. [Link to further guidance.](#)

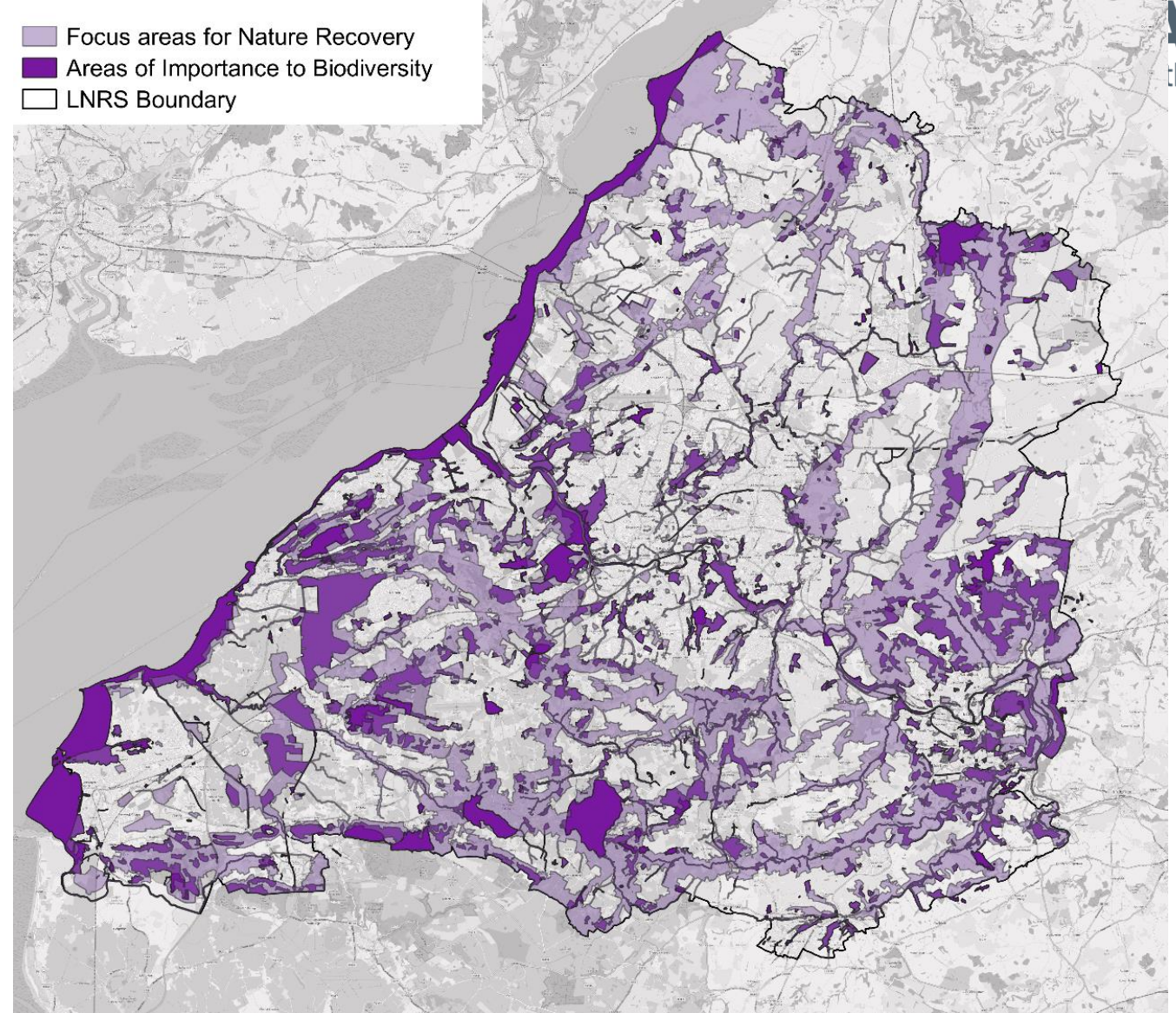
Create new multifunctional parks and green spaces to ensure that residents of new (and existing) housing have sufficient access to larger green spaces (meeting Natural England Access to Green Space Standards). This should be prioritised in areas with the least local access and/or where significant housing development is expected. [Link to further guidance.](#)

Create pocket parks and green spaces in unused spaces, prioritising areas with least access to local green space, and the highest vulnerability to the urban heat island effect and air pollution. [Link to further guidance.](#)

Design and deliver new housing developments with sufficient accessible, nature-rich spaces for residents (meeting Building with Nature Standards). [Link to further guidance.](#)

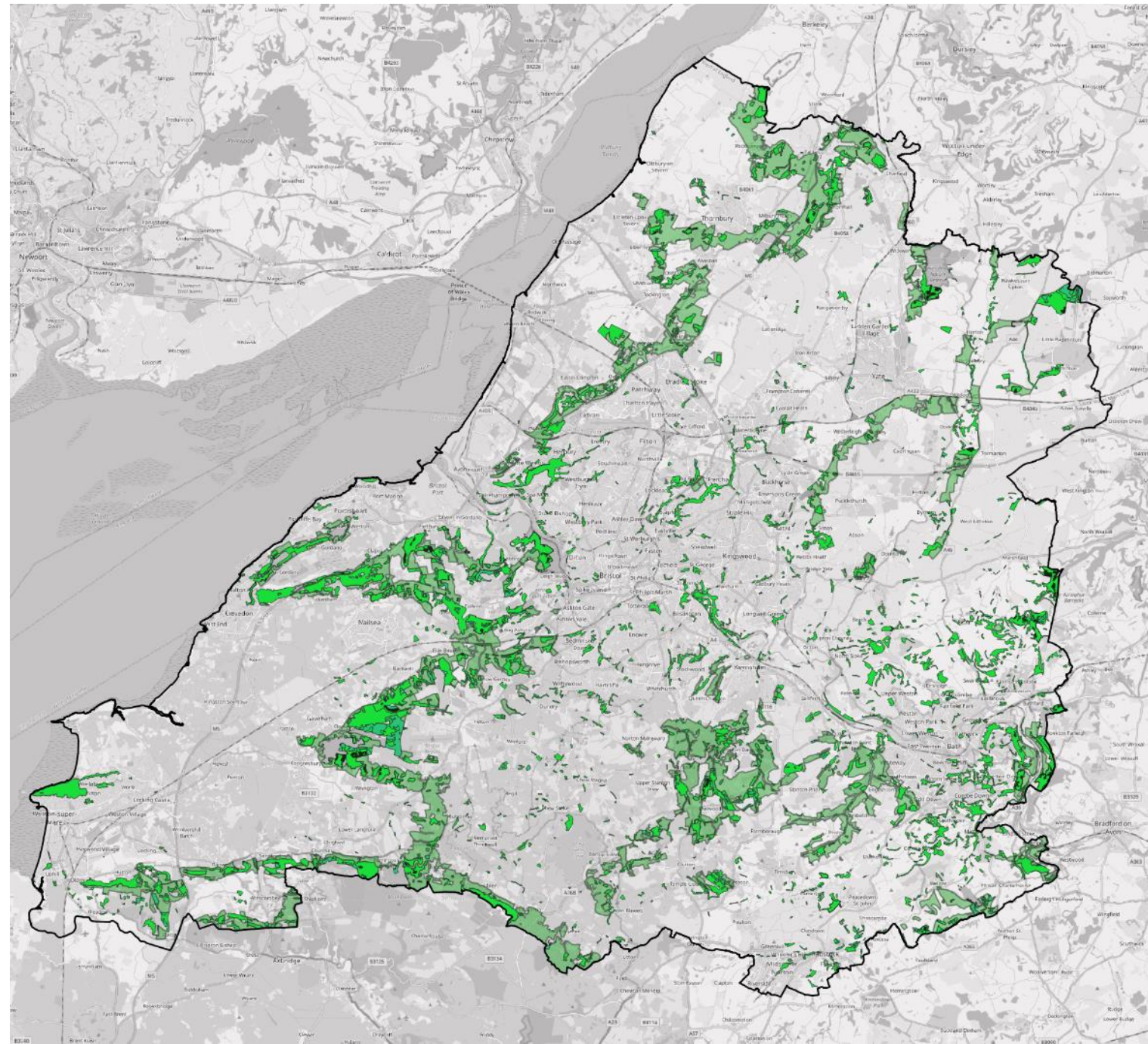
Create greenways along rivers in cities to improve people's access to rivers and provide nature-rich corridors. [Link to further guidance.](#)

- Focus areas for Nature Recovery
- Areas of Importance to Biodiversity
- LNRS Boundary



# Local Habitat Map

# Mapped measures



# Opportunities in parks and green spaces

# Opportunities

- **Higher payments** for habitat creation/enhancement through **BNG** if in an ACPIB and mapped measure is delivered
- (Potentially) greater likelihood of accessing some funding pots if delivering LNRS priorities/measures
- Use the LNRS to inform most effective interventions in existing parks and green spaces
- Use the LNRS to inform creation of new parks and green spaces

# Using the Maps

LNRS Measures West of England Combined Authority

Find address or place

Map Layers

- > Woodland measures
- > Wood pasture measures
- > Mosaic habitats & scrub
- > Grassland measures
- > River & floodplain measures
- > Coastal floodplain measures
- > Traditional orchards
- > Parks & green spaces
- > Hedgerows & cross-slope planting

Map data © OpenStreetMap contributors, Microsoft, Facebook, Inc. and its affiliates, Esri Community Maps contributors, Map layer by Esri

Powered by Esri

# Limitations

- LNRS is not a substitute for a more detailed analysis of requirements for ecological mitigation / improvement
- In urban areas, in particular, more detailed/localised strategies can supplement the LNRS
  - The LNRS does not map detail on e.g. where the best locations for street trees are, or what bits of parks might be suitable for nature recovery

# Questions