



Chris Avent
Green Estate Manager
Plymouth City Council



Plymouth and South Devon
Community Forest



1. Plymouth's Habitat Bank

2. Plymouth's Community Forest programme



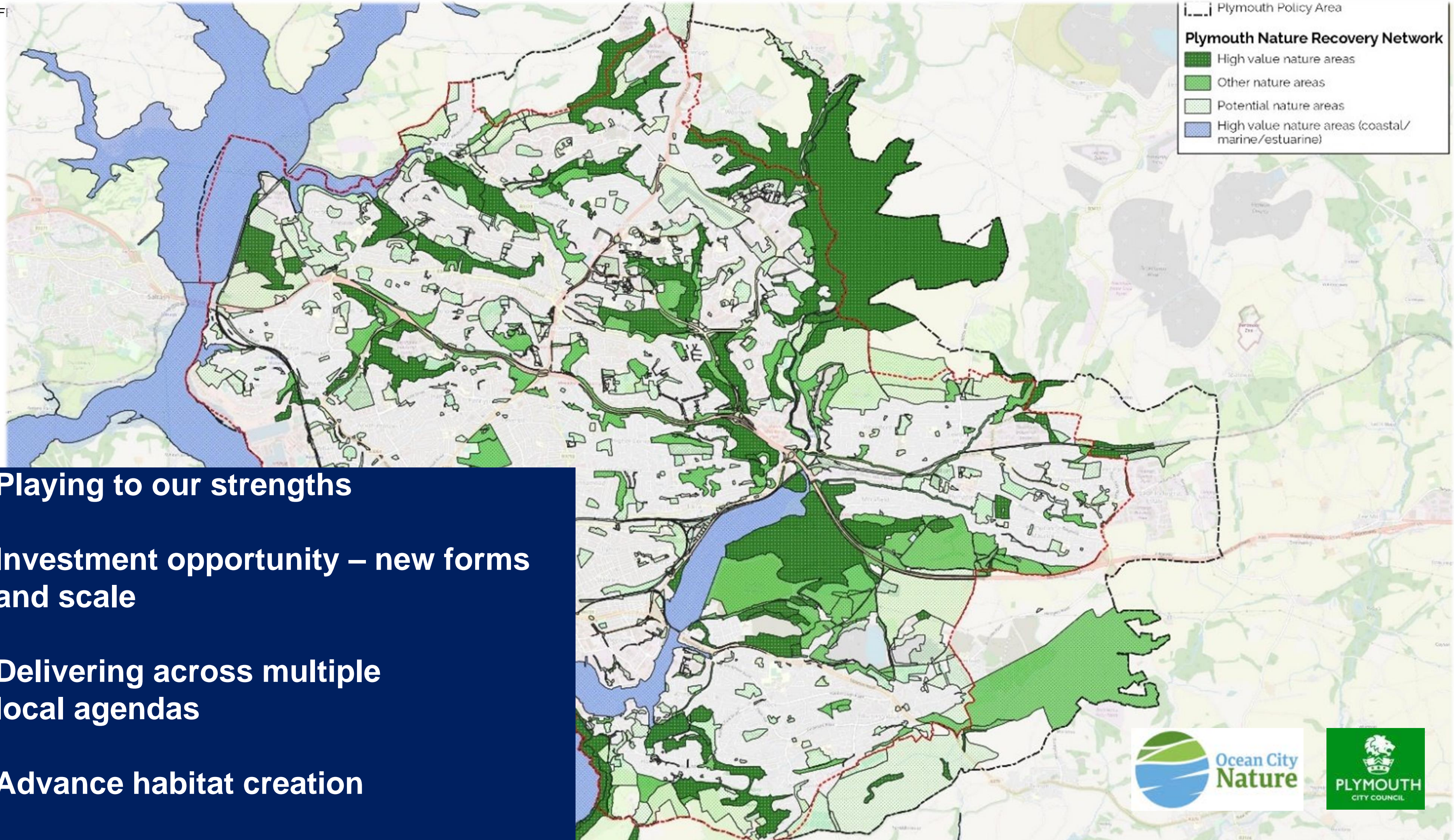
Plymouth and South Devon
Community Forest





Habitat Banks: Generating dividends for people, places, and nature





Playing to our strengths

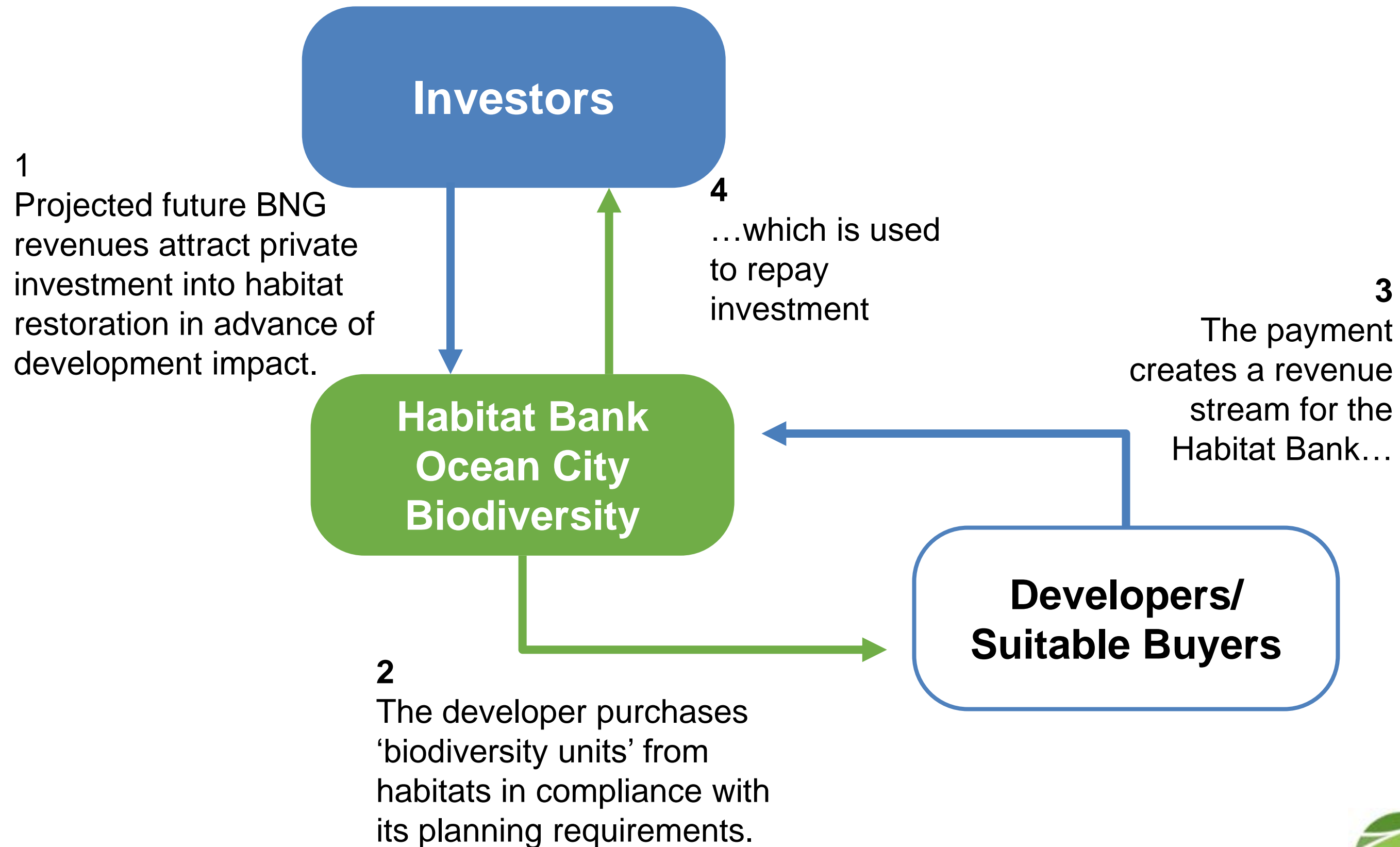
Investment opportunity – new forms and scale

Delivering across multiple local agendas

Advance habitat creation



Habitat Banking model



The potential for Local Authority habitat banking - Summary

- Protects the risk of flight of mitigation interventions and revenues leaving the area.
- Surplus income re-invested into green space, not into private profit companies.
- Land that may be running at a loss due to maintenance/security costs, can now generate income.
- LA positioned to access and fund expertise that impacts quality and integrity, e.g. ecological, habitat management planning and environmental partnerships.

- Providing a credible local offer to work with development proposals and minimise friction of introduction of mandatory BNG.
- Benefit to residents through public access and incorporating social value into projects - delivering across multiple local agendas.
- Enables local authorities to both plan *and* deliver biodiversity sites strategically.
- Advance habitat creation/restoration contributes to speed of meeting any local authority biodiversity targets.



key learning and recommendations for success

Journey length and intensity

- It is easy to underestimate the journey necessary to unlock a new way of working – Green Finance – and the **mindset shift**, training and upskilling required to bring all stakeholders along on the journey
- **Procurement** of external legal and tax advice can be time-consuming, causing delays, start early.

Stakeholder engagement

- The core project team need a Project **Sponsor** at a senior enough level to influence.
- A wide range of **stakeholders** from internal teams need to be co-opted to reach investment readiness.
- Identify strengths of different stakeholders ensuring **early involvement** to expedite decision making, help build the business case, adapt the project and influence others.

Building Integrity and Common Purpose

- This model requires a careful balance between public access while delivering the target habitat condition. All activity needs to be **costed accurately** into the delivery model.
- Build **principles** at early stage by consensus as a touchstone for decision making.
- Local Authorities are attuned to place-based priorities and can shape BNG projects to align with city strategy

For more detailed information
Webinar Series –
www.futureparksaccelerator.notion.site

Credit: Chris Parkes Photography

Contact:
oceancitybiodiversity@plymouth.gov.uk





England's Community Forests

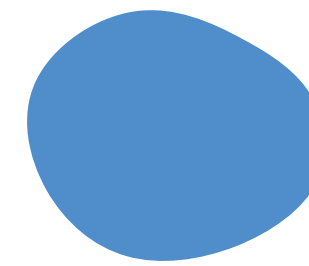



Department for Environment Food & Rural Affairs

Trees for Climate Fund



Urban Achievements



An area equivalent to **50 football pitches** with new canopy cover



6,163 urban trees planted as part of the Queens Green Canopy



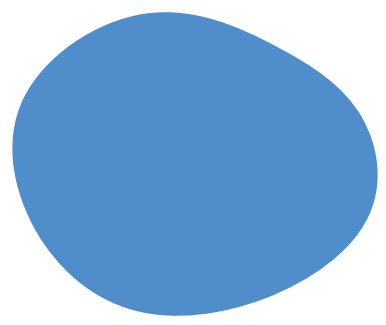
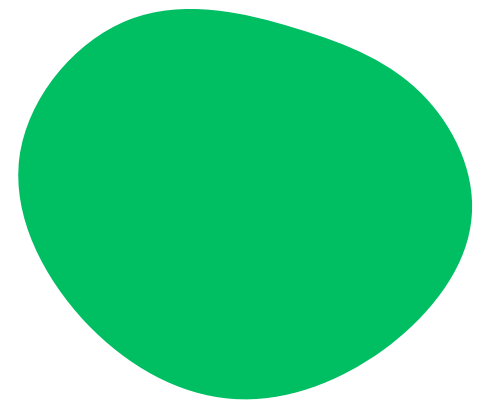
A total of over **15,000** trees planted since the project began

Almost **50** community planting events over the past **3 years**

Over **80** locations across Plymouth

OFFICIAL

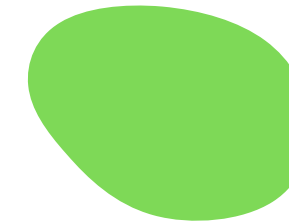
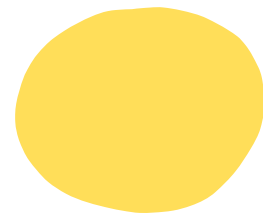
Case Study: Rees Community Centre



Plymouth and South Devon
Community Forest



Working in partnership



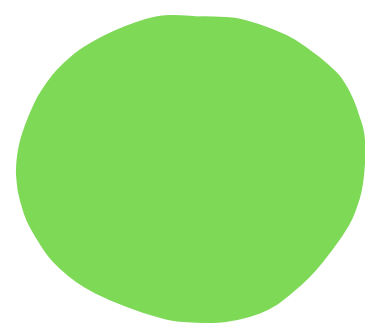
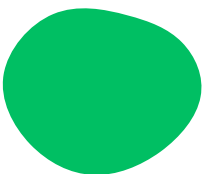
Plymouth and South Devon
Community Forest



Plymouth and South Devon
Community Forest



The Community Tree Nursery



greenminds



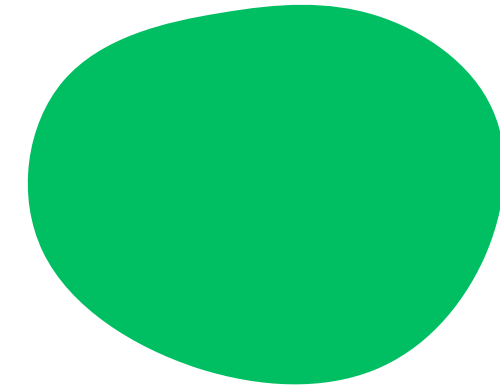
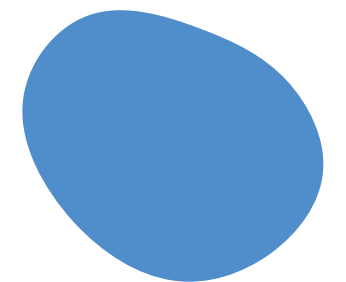
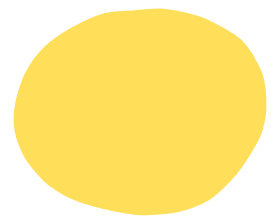
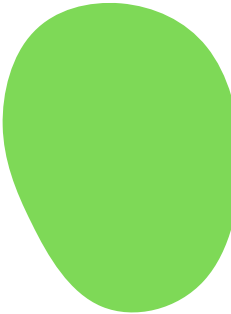
Devon Wildlife Trust



Plymouth and South Devon Community Forest



OFFICIAL
Events



Plymouth and South Devon
Community Forest



The Community Tree Nursery Achievements

12 community volunteering events

Over 465 volunteer hours gifted

7,172 native broadleaf seeds collected

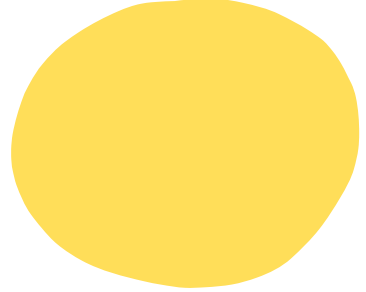
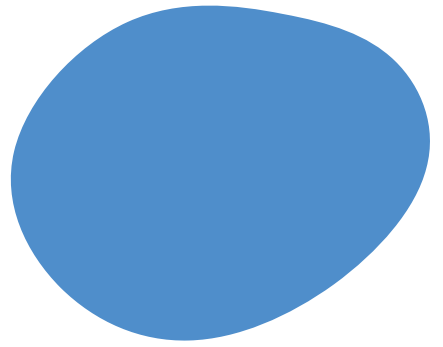


Thousands of people engaged through our BBC spotlight feature

Over 80 oak saplings rescued from grass cutting

And 1 amazing community built in the heart of Plymouth

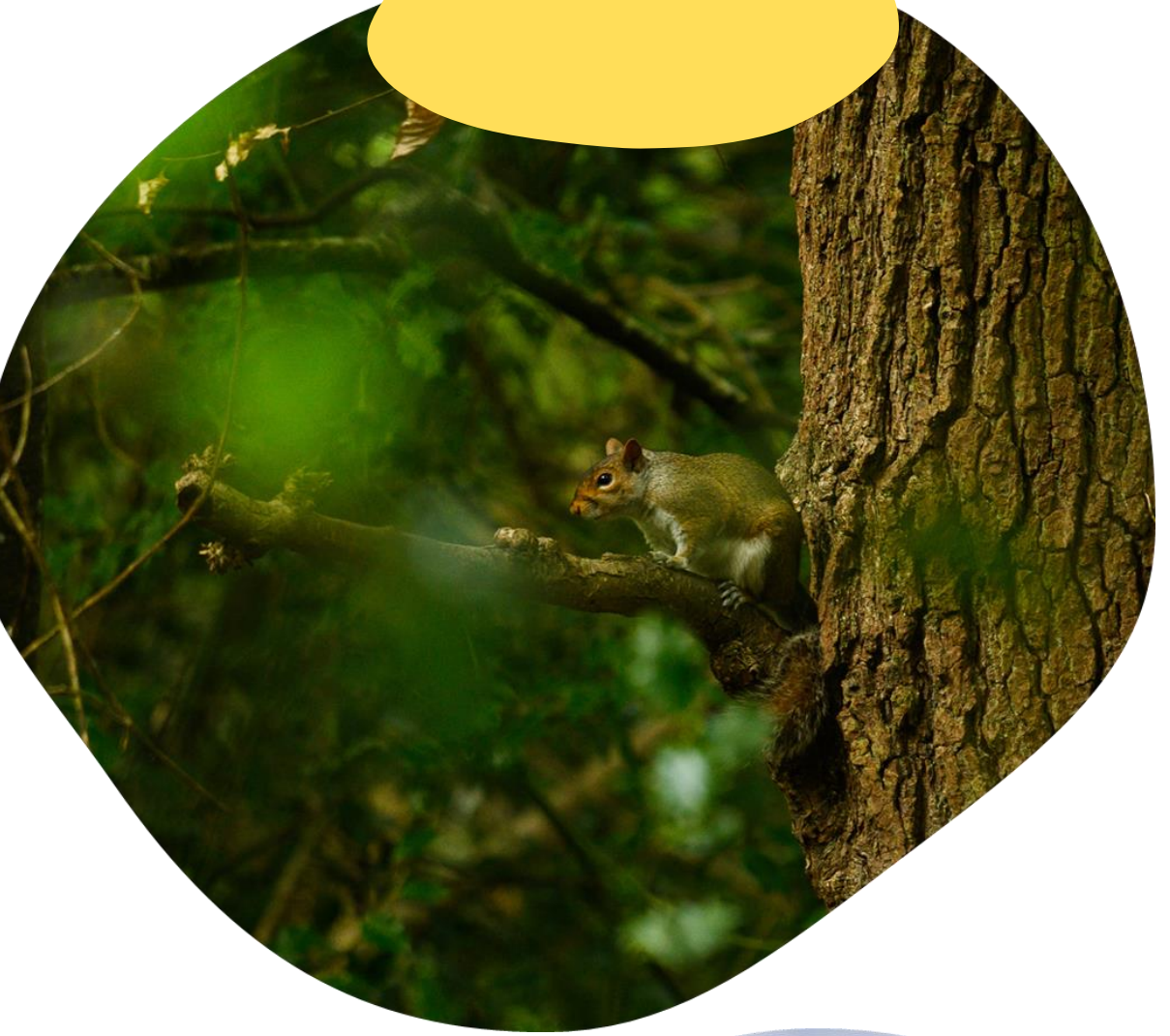
Forest Rising



Plymouth and South Devon
Community Forest



Next Steps



Questions?

Chris.avent@plymouth.gov.uk



Plymouth and South Devon
Community Forest

