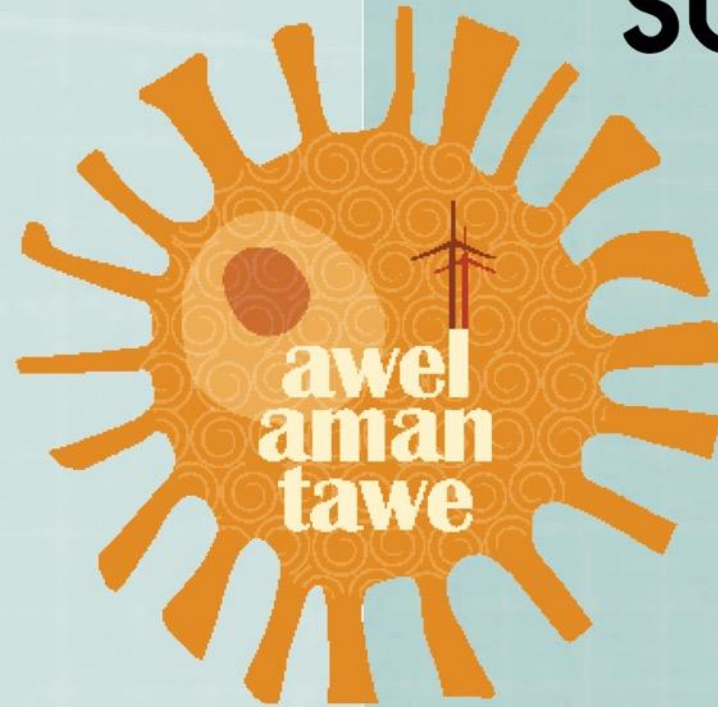
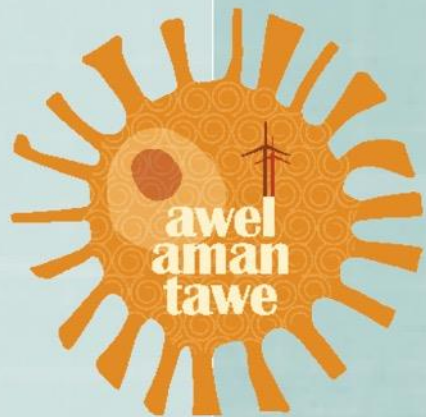


**CLIMATE &
BIODIVERSITY
CRISES**

**COMMUNITY
RESILIENCE &
SUSTAINABILITY**



TWO KEY CONCERNS

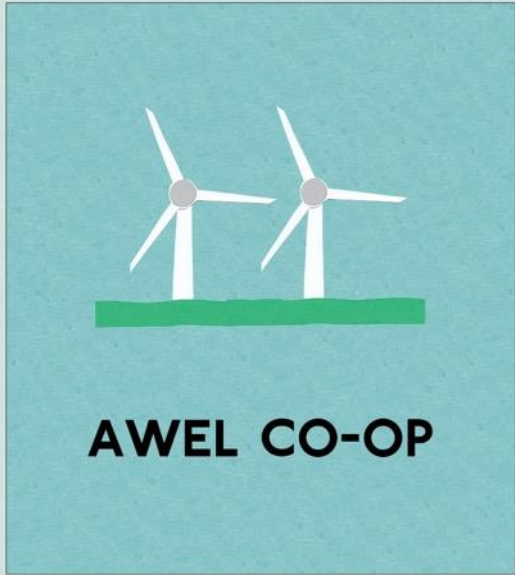


**RENEWABLE
ENERGY
INSTALLATIONS**

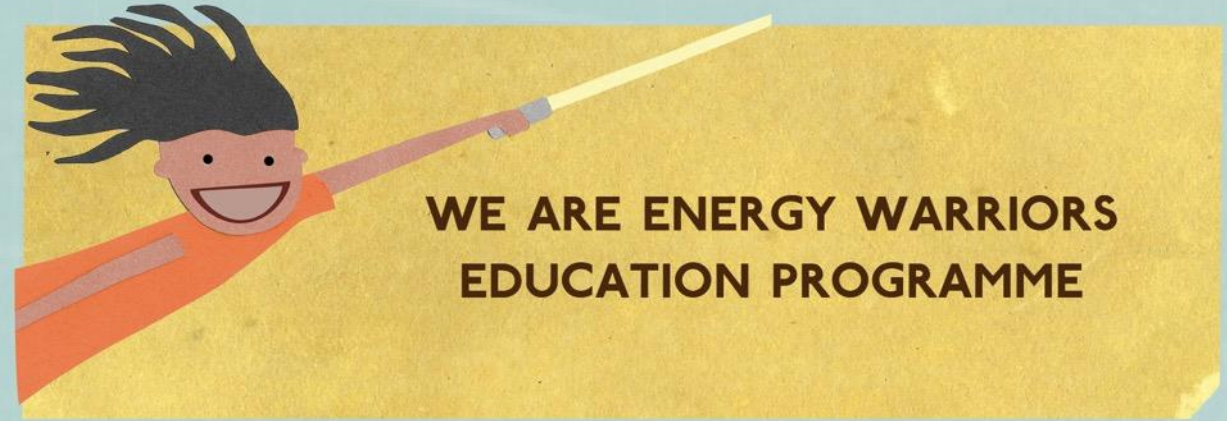


**COMMUNITY
PROJECTS &
EDUCATION**

RENEWABLE ENERGY INSTALLATIONS



COMMUNITY RESILIENCE & EDUCATION



**COMMUNITY
HUB**



**ENERGY
ADVICE**

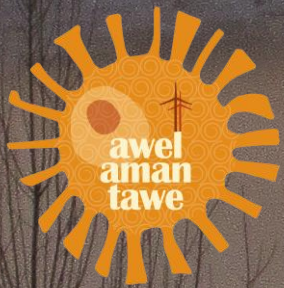


**COMMUNITY
TRANSPORT**



**CLIMATE
ARTS**





Awel Aman Tawe

EGNI CO-OP



Est. 2014

**Largest
rooftop solar
coop in UK**

**1,500
members**



2014 Pilot :

- Established co-op
- Raised c. £300K
- Installed on 7 roofs:
Community buildings + one school

2019 :

- Feed-in-Tariff
- New Egni Coop Share Offer
- Raised £5 million
- Contacted all energy managers in Wales
- Installed in Newport, Pembrokeshire and Swansea



SCHOOLS

GOWERTON SECONDARY SCHOOL
PONTARDDULAIS COMPREHENSIVE SCHOOL
MALPAS COURT PRIMARY SCHOOL
PILLGWENLLY PRIMARY SCHOOL
ST ILLTYD'S HIGH SCHOOL
LAMPHEY PRIMARY SCHOOL
LLANWERN HIGH SCHOOL
PORTMEAD PRIMARY SCHOOL
GLYNCOLLEN PRIMARY SCHOOL
MORRISTON COMPREHENSIVE SCHOOL
CEFN HENGOED COMMUNITY SCHOOL
PENYRHEOL COMPREHENSIVE SCHOOL
SEAVIEW PRIMARY SCHOOL
CLWYD PRIMARY SCHOOL
SAUNDERSFOOT PRIMARY SCHOOL
PENTRECHWYTH PRIMARY SCHOOL
CWM GLAS PRIMARY SCHOOL
ALWAY PRIMARY SCHOOL
LLANMARTIN PRIMARY SCHOOL
YSGOL GYMRAEG BRO TEYRNON
EVESWELL PRIMARY SCHOOL
MONNOW JUNIOR SCHOOL
PRENDERGAST PRIMARY SCHOOL
MARSHFIELD PRIMARY SCHOOL
NEWPORT HIGH SCHOOL
TAVERNSPITE

PEMBROKE DOCK COMMUNITY SCHOOL
LLISWERRY PRIMARY SCHOOL
CILGERRAN PRIMARY SCHOOL
BRYNMAWR FOUNDATION SCHOOL
MAESGLAS PRIMARY SCHOOL
LLISWERRY HIGH SCHOOL
ST. JOSEPH'S HIGH SCHOOL
MAINDEE PRIMARY SCHOOL
ST. PATRICK'S PRIMARY SCHOOL
YSGOL Y FRENNI (BRO PRESELI)
ST. JULIAN'S HIGH SCHOOL
YSGOL Y BEDOL
YSGOL GYMRAEG CASNEWYDD
THE JOHN FROST SCHOOL, SPORTS HALL
BASSALEG COMPREHENSIVE SCHOOL
JOHN FROST SCHOOL JONES BUILDING
CORPUS CHRISTI HIGH SCHOOL
JOHN FROST SCHOOL WILLIAMS BUILDING
ST. JULIAN'S PRIMARY SCHOOL
CAERLEON COMPREHENSIVE SCHOOL
YSGOL BRO INGLI
GOLDEN GROVE PRIMARY SCHOOL
MARY IMMACULATE HIGH SCHOOL
MAES EBBW SCHOOL
PENTREPOETH PRIMARY SCHOOL
ROGERSTONE PRIMARY SCHOOL
PENTREHAFOD SCHOOL

COMMUNITY, SPORTS & WASTE

AFAN VALLEY SWIMMING POOL
TRIMSARAN LEISURE CENTRE
GARNANT PARK GOLF CLUB
TENBY LEISURE CENTRE
NISV TENNIS & POOL CENTRE
CWMGORS RUGBY CLUB
FISHGUARD LEISURE CENTRE
MERTHYR TOWN FC
NISV GERAINT THOMAS VELODROME
PONTUS RESEARCH UNIT E
AWEL AMAN TAWE CWMLLYNFELL
CYMMER AFAN COMMUNITY LIBRARY
GLYNNEATH TRAINING CENTRE
GORSEINON CENTRE
EAST WILLIAMSTON COMMUNITY HALL
DOVE WORKSHOP
ME, MYSELF AND I
BRYNCETHIN PAVILLION
CILGERRAN VILLAGE HALL
SEVEN SISTERS COMMUNITY HALL
LLANDDEWI VELFREY VILLAGE HALL
HWB Y GORS, SAIB IRF
THE PHOENIX CENTRE
SPRING GARDENS CARE HOME

CLYNFYW CARE FARM
QUEENS HALL
CRYNANT COMMUNITY HALL
LLANBRADACH COMMUNITY CENTRE
PENLLERGAER VILLAGE HALL
HAVERHUB
VALLEY KIDS - SOAR CENTRE
BLAENYPANT HOUSE APH
NPTCVS 36 ORCHARD ST
NPTCVS 17 ALFRED ST
HIRWAUN VILLAGE HALL
OWAIN GLYNDWR COMMUNITY CENTRE
CADOXTON COMMUNITY CENTRE
CLUNDERWEN COMMUNITY HALL
CWMLLYNFELL MILLENIUM HALL
CWMAFAN COMMUNITY CENTRE
TELFORD DEPOT
WASTESAVERS RECYCLING LIMITED (ESPERANTO)
DOCKS WAY DISPOSAL SITE
WASTESAVERS REUSE CENTRE (MAINDEE)
PARKLANDS CARE HOME

PRIVATE BUSINESSES

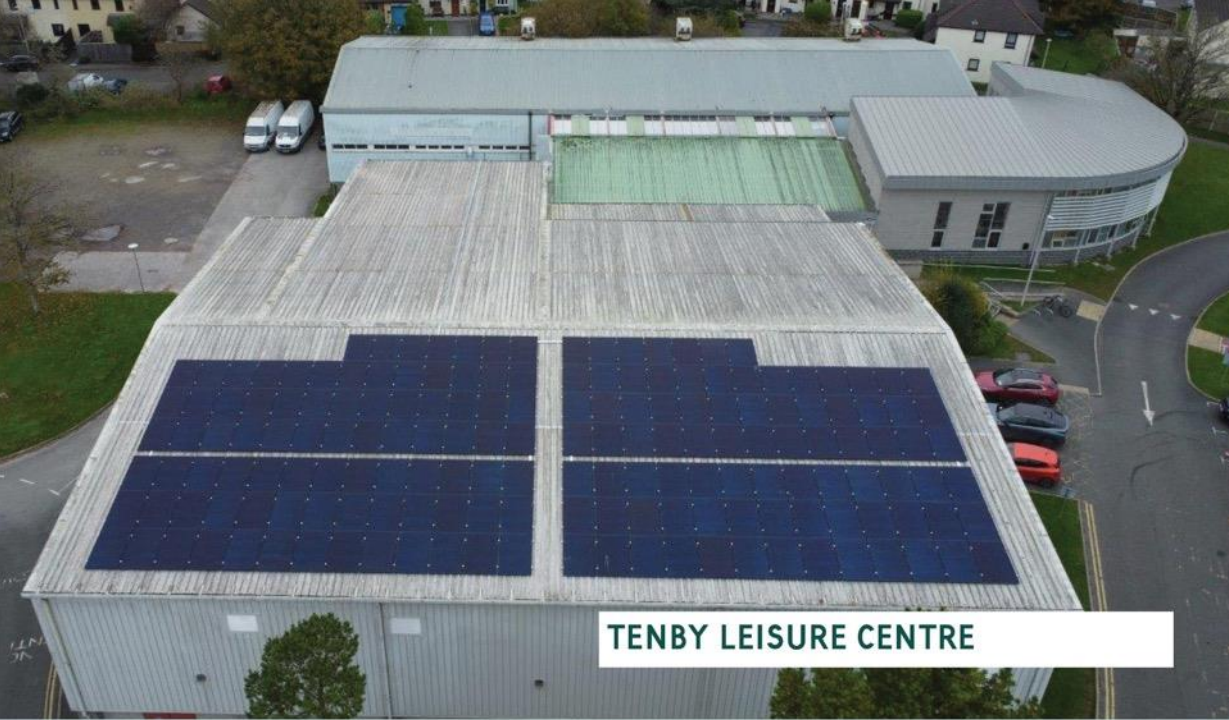
PONTYPRIDD PRECISION ENGINEERING
PULLMAFLEX - LEGGETT & PLATT
PONTUS RESEARCH UNIT E

Main partners so far



Site Category	Number of sites	Installed capacity (kWp)
Newport City Council	32	2,244
Community	35	848
Swansea Council	12	657
Pembrokeshire County Council	12	747
Archdiocese of Cardiff	5	319
Business	3	367
Blaenau Gwent School	1	60
Carmarthenshire County Council	1	50
Total	100	5 MWp





TENBY LEISURE CENTRE



PENTREHAFOD SCHOOL 100KW



MONNOW PRIMARY SCHOOL 35KW



GOLDEN GROVE PRIMARY



Creating our journey sticks to show what we have learned in our Energy Warrior project



PIC • COLLAGE

2024:

- Positive relationship with Newport & Pembrokeshire
- Procurement via Sell to Wales (weighted to include education)
- Solar PV on LA buildings
- Smart Energy systems: chargepoints & batteries
- Papillio



Finances

2023: saved our sites £310k in electricity costs. 2024: £257k

Further £ savings through Energy Warriors education programme

We need to reach 7.5% Rate of Return (ROI) to pay back loans/community shares

Egni 2025 prices/income streams

- Onsite power price: between 18-23/kWh
- Export power prices: 8.87p/kWh
- Feed in Tariff and Deemed Export on 85 sites

Has educational value – schools are co-op members owning £500 shares

Current Council PPA is to always match the main supplier or a 10% discount against main supplier.

Looking to introduce a Floor Price/site



Shared values:

Tackling climate change, not profit-making.

Education impact :

Long-standing engagement with schools, plus support through Energy Sparks.

Quality installations:

Reliable performance by being directly invested in every kWh generated.

Operations & Maintenance:

Daily monitoring, annual independent inspections, and coordinated repairs/cleaning reduce pressure on overstretched LA teams.

Track record of funding:

Egni secured £1m grant from Ynni Cymru, alongside other grants supporting education and creative enrichment.

The Future

- GB Energy/Labour policy to increase co-ops
- Shared Ownership
- NGED funding for schools
- **Partnership** between Public Sector and Community Energy
 - <https://plymouthenergycommunity.com/>
 - <https://www.bwce.coop/>
 - <https://www.lowcarbonhub.org/>
 - <https://www.repowering.org.uk/>



