

Integrating climate action into delivery

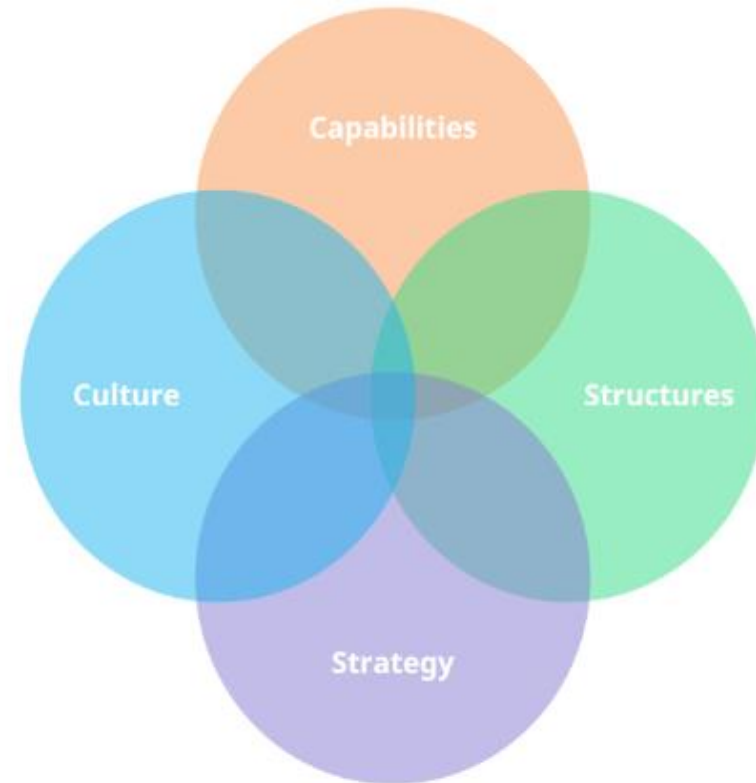
APSE

May 2023

Sophie Stiles

Transition is a Change Management Process

- Culture – what are our risk appetites, encourage innovation and systemic approach
- Behaviour change - requires confidence, knowledge, co benefits analysis
- Capabilities – Do we have skills, capacity, knowledge, finance
- Structures- enablers, policy, performance frameworks, regulation, comms channels, governance structures
- Strategy – plan for success, data and evidence
- Regulation – do we need to drive change or will it happen organically
- Climate impact statements a tool in this delivery



Shaping our Climate Impact Statements

Goals

- Review decision making proformas – PIDs and Business plans - to better explore environmental impacts
- Find a way to help better prioritise climate against pressures of cash economics
- Support staff and members make decisions from a position of knowledge and understanding of climate impacts. Climate literacy
- Develop qualitative assessment for use now – while we develop better ways to measure and monetarise climate impacts
- Research and explore existing models in use

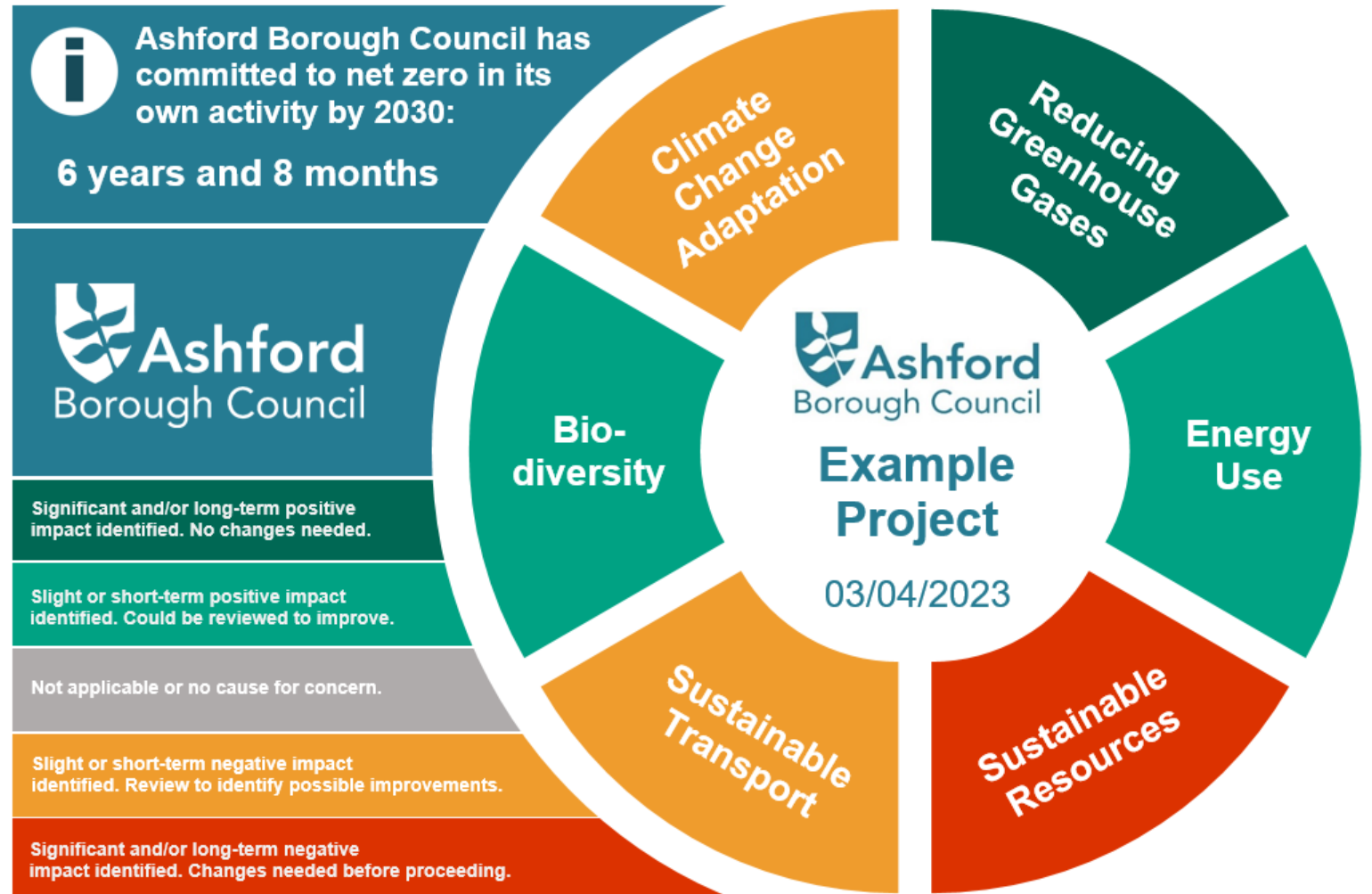
Scoping

- Specific requirement to consider - Time and staffing pressures
- Focus on environment – at this point, equality considerations covered elsewhere in our processes
- Select Headings to link to existing strategy – with future proofing in mind

Cheltenham	Chesterfield	UK Gov - Green Taxonomy	Ashford - CAP	ABC Climate Impact Statement
Sustainable Materials	Buildings	Mitigation	Sustainable buildings	Sustainable resources and materials (reuse, refurbished, ecological, local) Scored hierarchy
Waste	Goods and Services		Low carbon services	
	Waste	Circular Economy	Recycling	Circular Economy - Full life considerations end of life, reuseable, recyclable
	Business		Green economy	Green economy ? Green skills and business
Sustainable Transport	Transport		Transport	Sustainable Transport
Air Quality		Pollution prevention		Green House Gases - Pollution consideration and prevention
GHG				
Land Use Change	Land use	Biodiversity and Ecosystems	Biodiversity	Biodiversity and Ecosystems – support and regeneration – circular economy
Biodiversity		Water		
Soil and Waterway Health				
Energy Use	Energy		Energy	Renewable Energy – use and generation
Climate Adaptation	Adaptation	Adaptation		Adaptation – proactive response through place and space
	Internal Resource			
	Influence		Raise awareness - influence	

Climate Impact Assessments

- Replaces sustainability text boxes in our pro formas – often an afterthought
- Invites reader to question red and yellow segments
- Key as encourages review at project design stage – drives best outcomes
- Potential to standardise from PIDs to Cabinet papers
- Normalises climate considerations – language over time becomes
- Introduces circular economic principles
- Climate accountability in decision making



Next steps

- Trial and review - e.g. Consider if adequate headings
- Evaluation with tool users/inputters and readers
- Look to re-expand – model to cover all social value
- Database of plans – accountability – audit trail
- Explore ways to calculate overall project grade/score
- Analysis to evidence which (if any) project types consistently fall short – work with service to explore any systemic issues and explore relative impacts on net zero