



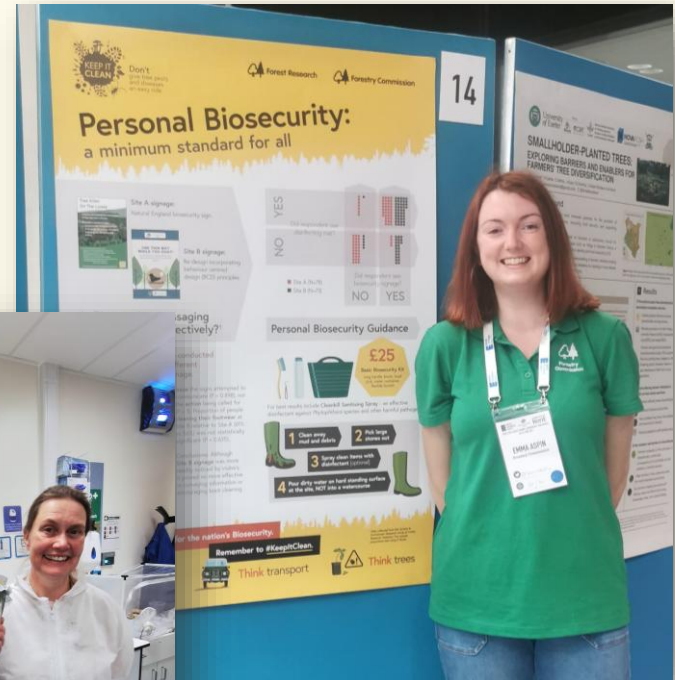
Urban Tree Health and Biosecurity Workshop

A set of measures or precautions designed to prevent the spread of harmful organisms

Dr. Emma Aspin & Dr. Caroline Gorton
12th March 2026 – APSE Parks Seminar



Meet the speakers!

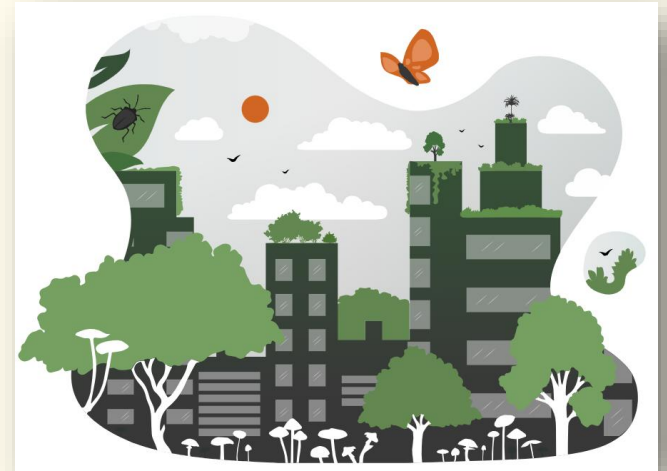


What this workshop is about...

- Exploring practical ways to protect urban trees from **pests and diseases (P&D)** and promote use of **biosecurity** in everyday operational activities.

Why this is important:

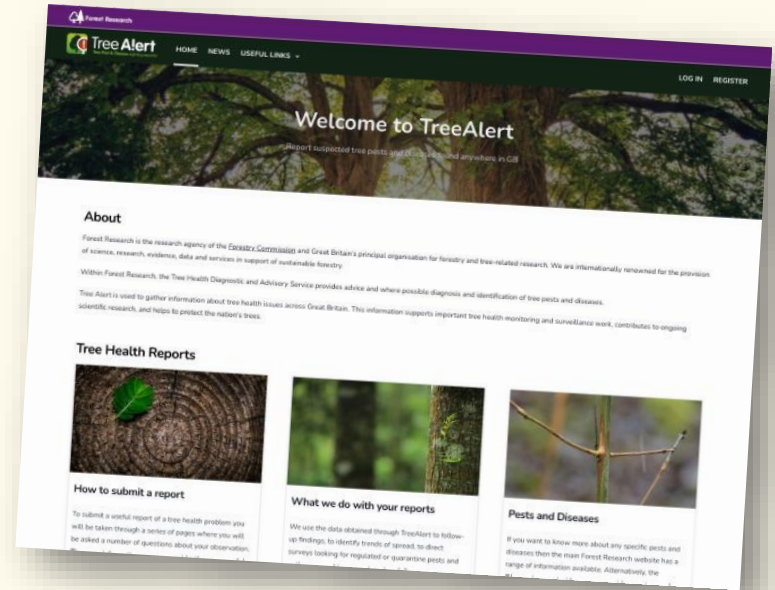
- **Urban spaces in the bigger 'plant health' picture**
- **High risk of P&D introductions**
- **Highly managed and observed**



What this workshop is about...

Today's aims:

- **Recognise biosecurity risks in urban tree settings**
- **Identify appropriate biosecurity measures**
- **Understand where to report tree health concerns**



Contractor movement

Public recreation

Newly planted stock

Plants and plant material

Distributors/
Growers/
Traders

Landscape Architects/
Amenity Landscapers/
Landowners/
Land Managers

Domestic Landscapers/
Garden Designers

Online/
Mail Order Suppliers

Retailers/
Garden Centres/
Nurseries

Wider Environment
- e.g. rural and urban green spaces

Consumers' green spaces
- e.g. gardens/
allotments/
window boxes

Plant sourcing

Contaminated soil, kit, tools, water, etc.

Proximity to vehicles/traffic

On site processing of material



It's what you
can't see that's
the problem

Pest and disease are invisible to the naked
eye, don't pick up unwanted hitchhikers,

always clean your boots and clothing after use



You cannot see
pests and diseases
on boots
or equipment

Prevent the spread of tree pests and
diseases by practicing good biosecurity
such as cleaning boots and equipment



Established



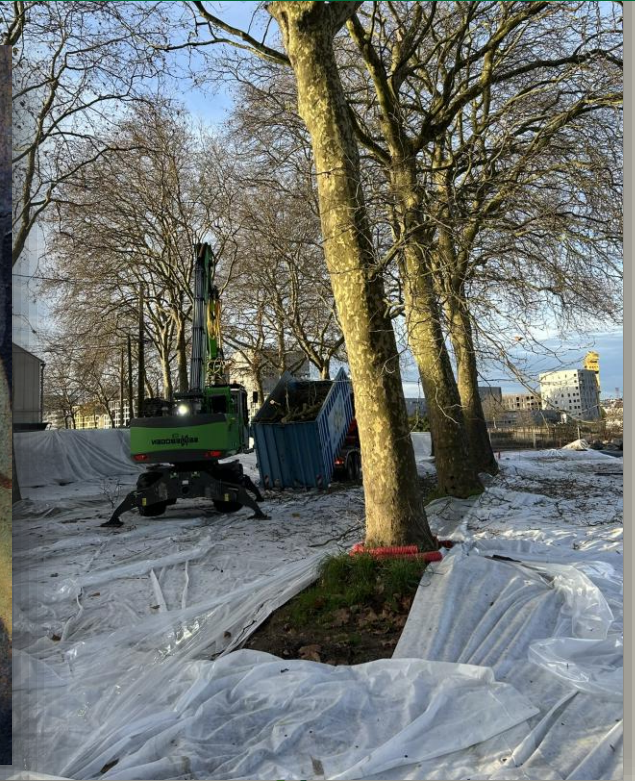
Oak Processionary Moth

Accidentally introduced in 2005 through imported 'instant impact' trees planted in London



Horizon

Canker Stain of Plane





mission



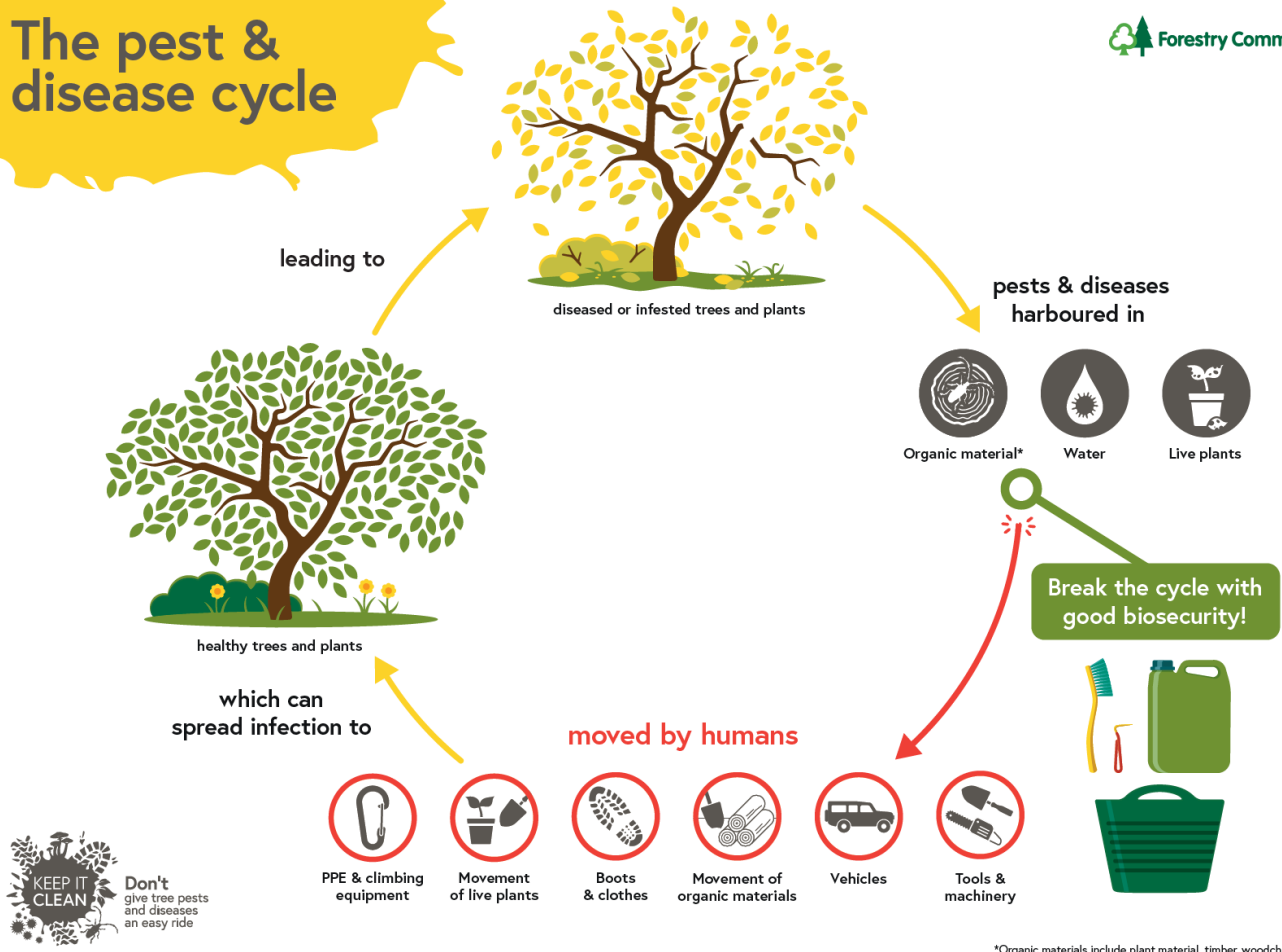


Commission



ommission

The pest & disease cycle



Introducing 'New Air Park'



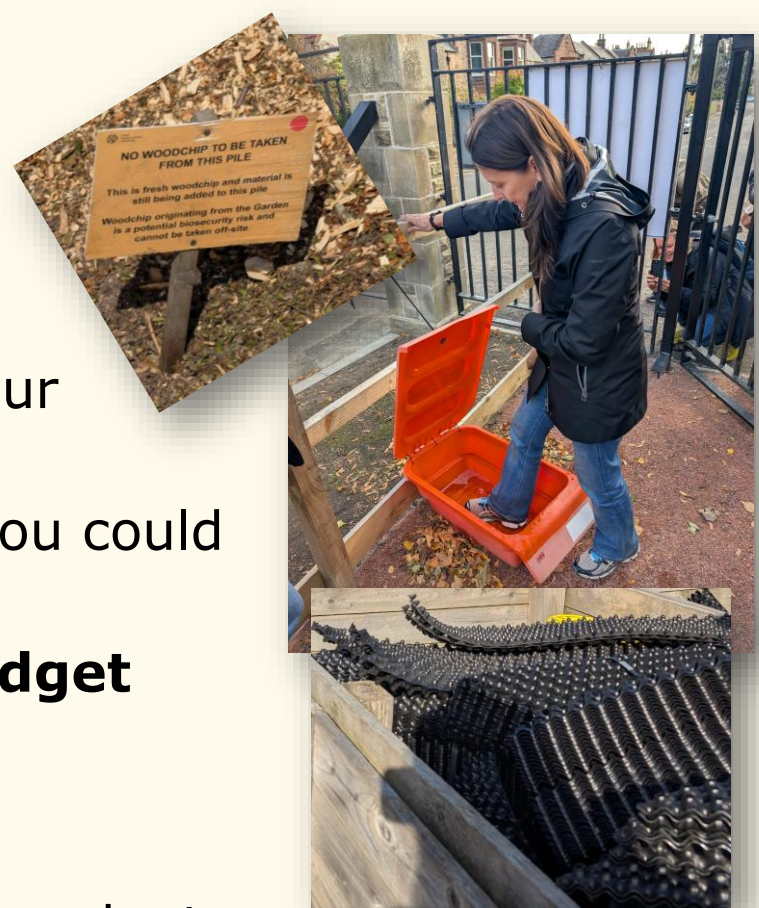
Activity:

- 3 scenario rounds
- Discuss in groups
- 8 minutes per scenario
- Return comments

Key takeaways:

Consider:

- Where do these risks show up in your authority/organisation?
- What's the simplest improvement you could realistically make?
- **Biosecurity = behaviour, not budget**
- **Prevention > Cure**
- **Utilise TreeAlert for reporting**
- More information available in your handouts





Thank you!

12th March 2026 – APSE Parks Seminar

