

APSE Parks Seminar 2026

12th March 2026

Let It Bee: Nature Recovery in Practice

Growing Green and Resilient Urban Places for People and Nature to Thrive

Helen McNally

Head of Commercial Landscapes



**Pictorial
Meadows**

www.greenestate.org | www.pictorialmeadows.co.uk

info@pictorialmeadows.co.uk

1998

Start of a Heritage & Environment Project Partnership between Local Development Trust and The Wildlife Trust



Our story

Manor Fields Park



Our story

Community



Case Study

Manor Fields Park: Bellway Homes SuDS, 2005



Case Study

Manor Fields Park: Bellway Homes SuDS, 2005



Case Study

Manor Fields Park: Bellway Homes SuDS, 2005



Case Study

Manor Fields Park: SuDS, 2024



Case Study

Manor Fields Park: Wetland planting



Case Study

Manor Fields Park: SuDS, 2024



Case Study

Manor Fields Park: Impact assessment



- Improving quality of the environment
- Increasing Housing values
- Increasing land values
- Shifting demographic
- Economic multiplier

The Green Estate

Productive Landscapes

- High quality specialist general landscaping teams
- Employment and Training for local people
- Ongoing research and development into new services and products
- Major income source for GE
- Dispersed Composting Network, specialist substrates, brownfield meadows, Pictorial Meadows, installing / managing SuDS schemes (including Green Roofs)



2003

Green Estate buy majority share of Pictorial Meadows from Professor Nigel Dunnett

Pictorial Meadows



- High-impact designed mixes, inspired by nature
- Range of meadow products for different uses and site conditions
- Native and non-native, for people and pollinators
- Engaging, adaptive and resilient



The
University
Of
Sheffield.

Our story

200 hectares 'cleared sites' contract



Case Study

Holbeck, Leeds



Case Study

Holbeck, Leeds



Case Study

Holbeck, Leeds



Regeneration to Resilience

A journey of riches, regeneration and resilience



Rich & Rural

In the Tudor times, the area was a rural deer park. Wealthy, Bess of Hardwick and George Talbot, built Sheffield Manor Lodge and 'looked after' Mary, Queen of Scots



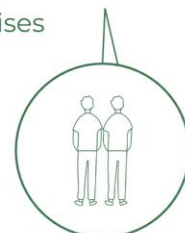
Industrial Rise & Fall

Garden City estates were built for the workers, but by the 80s and 90s, the area was in decline with Roy Hattersley mislabelling the area as 'the worst estate in Britain'



Regeneration Era

The Green Estate was set-up in 2003 to regenerate the landscape and heritage buildings into impactful enterprises



Team of 2



Pictorial Meadows

Pictorial Meadows becomes a commercial success, selling across the UK and into the EU, and featuring in the 2012 Olympic Park and 2022 Tower of London Superbloom



Team of 70+

£3m+ Turnover



National Awards



Resilience & Recognition

The Green Estate adopted a new resilience mission in 2024 and was recognised by the King and British Chambers with prestigious national awards

25+ years later

Green Estate and Pictorial Meadows today

- £3.1m turnover
- 65-70 staff
- 40+ volunteers
- 42 hectares
- 20 on-site community enterprises
- 40,000+ site visits including 5k GCSE students, 50 weddings
- Customers - UK and 3 EU countries
- Kings Award for Enterprise in Sustainable Development 2023



2024 awards; 10 years Green Flag Award, British Chambers of Commerce Awards, Green Innovation Business of the Year Award 2024, Winner of Winners 2024

The Green Estate CIC

Our Mission



Climate
crisis

Social
crisis

Nature
crisis

Together we grow
green and
resilient urban
places for people
and nature to
thrive

Case Study

Sheffield Grey to Green

Scheme Design

Sheffield City Council &
Robert Bray Associates

Planting Design

Nigel Dunnett & Zac Tudor

Maintenance

Green Estate CIC & Amey

Partners

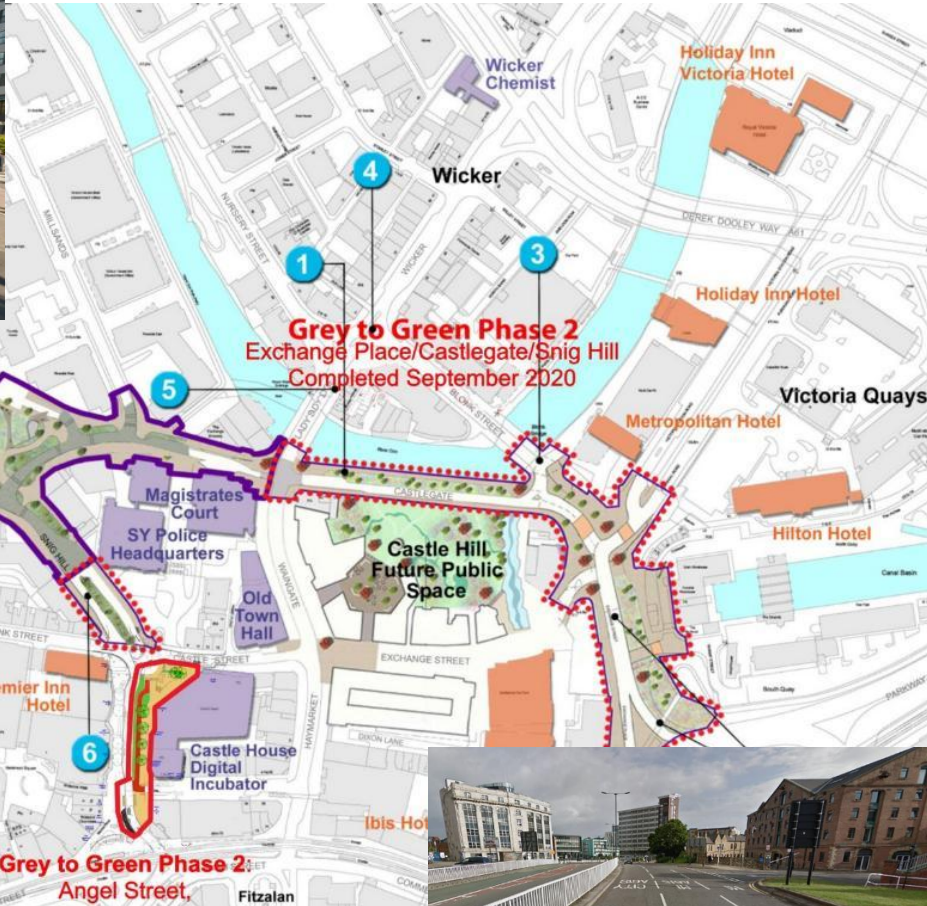


**Pictorial
Meadows**

Image: © Nigel Dunnett

Case Study

Sheffield Grey to Green (Phase 1 & 2)



Project Aims

- Flood prevention, cleaner rivers
- Regeneration
- Urban biodiversity
- Cleaner air
- Urban cooling
- Health and wellbeing

The Green Estate CIC contracted for

- Design, production and supply of specialist SuDS soils
- Planting
- Establishment
- Maintenance

Case Study

Sheffield Grey to Green, Phase 1 (Spring 2016)



500ml gravel mulch



Case Study

Sheffield Grey to Green



Case Study

Sheffield Grey to Green



Case Study

Sheffield Grey to Green



Case Study

Sheffield Grey to Green



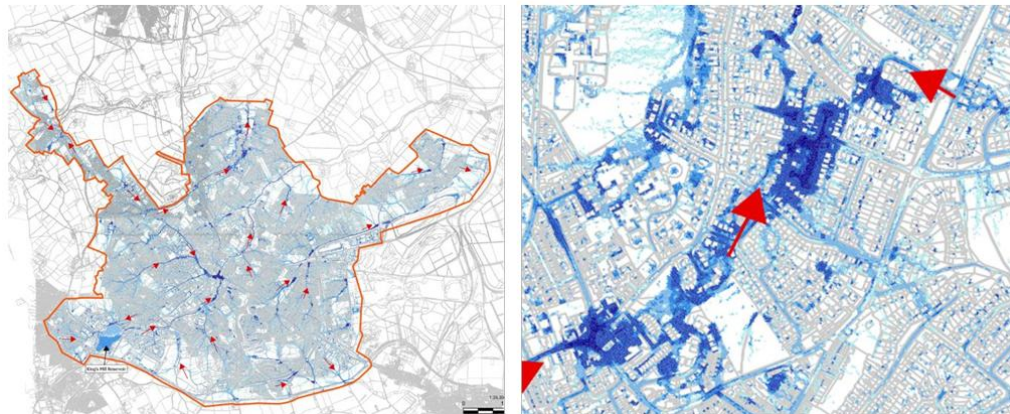
Case Study

Mansfield Flood Resilience Scheme

- £76 million
- Largest sustainable drainage project in the UK

Project Aims

- Decrease flood risk for 90,000 people
- 58,000m³ water storage, 60% of increased flow expected by 2050
- Urban biodiversity
- Economic and social benefits
- Cleaner rivers

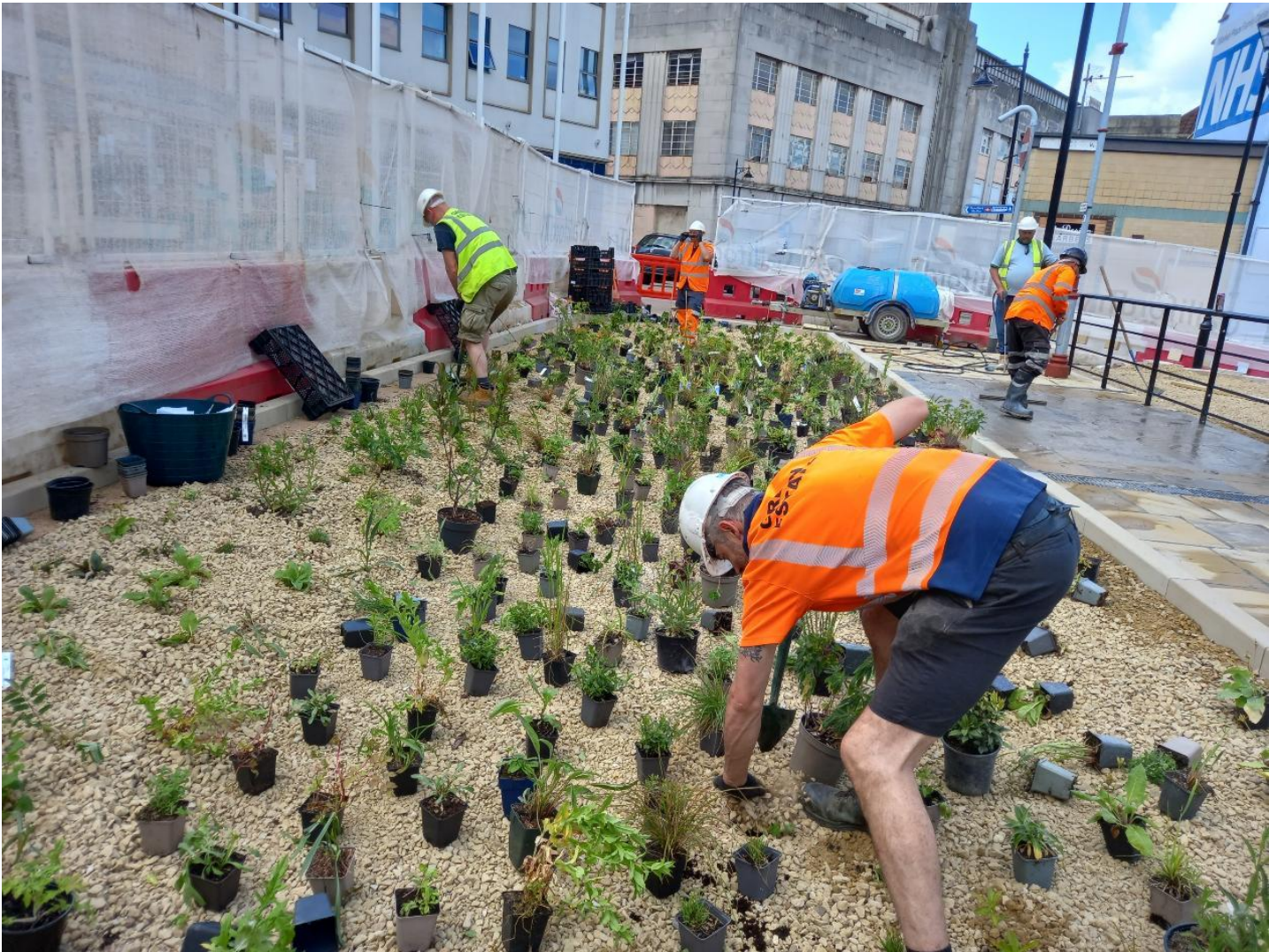


Green Estate CIC contracted for

- Production and supply of specialist SuDS soils
- Contract growing of perennial meadow turf
- Meadow turf installation
- Planting
- Seeding
- Early establishment
- 200 bioswales and rain gardens
- 40,000 plants
- 20,623 m² meadow turf (over 3 million plants)

Case Study

Mansfield Flood Resilience Scheme: Rain Gardens



Case Study

Mansfield Flood Resilience Scheme: Turf growing, supply and installation



Case Study

Mansfield Flood Resilience Scheme: Turf growing, supply and installation



Case Study

Mansfield Flood Resilience Scheme: Bioswales



Case Study

Mansfield Flood Resilience Scheme: Rain Gardens



Case Study

Mansfield Flood Resilience Scheme: Bioswales



Case Study

Mansfield Flood Resilience Scheme: Bioswales



Dec 2023



Early Spring
2024

Case Study

Mansfield Flood Resilience Scheme: Bioswales



Spring 2024

Case Study

Mansfield Flood Resilience Scheme: Bioswales



June 2025

Case Study

Parkhill Flats - Sheffield

- **£35-40million redevelopment of Grade II listed iconic Brutalist architecture**
- **Partnership - Urban Splash and Places for People**

Project Aims

- Completed in 2016
- Desire for naturalistic landscape to contrast redeveloped colourful façade
- Scheme Delivered 260 homes
- Urban biodiversity
- Economic and social benefits
- Active residents group creating sense of community
- Integration of sculpture points around the landscape



Green Estate CIC contracted for

- Supply of PAS100 compost – created through local circular economy
- Supply and install perennial meadow turf
- Planting advice and installation
- Early establishment
- Ongoing maintenance
- Local intelligent contractor

Case Study

Parkhill Flats - Sheffield



Case Study

North Lanarkshire – Mega Flora

- **Mega Flora was one of eleven projects supported by Greenspace Scotland**
- **£80K Funding from the 2023 Scottish Government/UK Government Levelling Up Parks Programme**

Project Aims

- Restoring nature in urban settings and country parks.
- Appraisal of Green Space across the council area
- Urban biodiversity and ecology enhancement
- Economic and social benefits
- Creating diverse healthy greenspaces
- Reducing biodiversity loss
- Rationalising maintenance regimes / carbon reduction



Green Estate CIC contracted for

- Consultancy for appraisal of green spaces
- Supply and install of 53 million perennial seeds
- Planting advice and installation across 130 plots
- Bespoke designed mixes
- Supply and planting of 900 tall herb plants enhancing species diversity
- Maintenance / Management recommendations
- North Lanarkshire staff training

Case Study

North Lanakshire – Mega Flora



Nature-based solutions

Our products & Services



Nature Bases Solutions provide multifunctional Urban landscapes

- Water, flooding, and pollution management
- Cost and carbon savings relative to other approaches
- Regeneration
- Biodiversity
- Community, health and wellbeing
- Urban Spaces contributing to Nature Recovery

Achieving the full spectrum of benefits requires

- Understanding site and social context
- Suitable plant and soils specification
- Skilled planting installation
- Skilled establishment care
- Consistent ongoing greenspace management

With 25+ years experience, we offer

- Horticultural expertise
- Products:
 - High impact designed seed and meadow turf mixes
 - SuDS soils, plants mixes, meadow turf
- Services – Consultation, site appraisal, soils and planting design, installation, establishment, maintenance
- Training and demonstration

Introducing The Advanced Urban Resilience Centre



*A living place-based demonstrator of green and resilient urban places
where people and nature thrive*