

# Network News



# Timetable

WHAT'S  
NEW?



We're pleased to share the Performance Networks timetable for Year 28, which outlines the key dates for submitting service data throughout the upcoming benchmarking year, which launches in April.

Providing data by these dates helps us produce timely and meaningful benchmarking reports, giving members valuable insight into performance across the network.

Thank you to all members for their continued contribution to the performance networks programme. Your participation ensures the benchmarking remains robust, relevant and beneficial for everyone involved.

<b>Service</b>	<b>Return stage to be included in all checking</b>	<b>Return stage to be included in exclusion reports</b>
Building cleaning	31-Jul	01-Oct
Building maintenance	31-Jul	01-Oct
Catering	31-Jul	01-Oct
Cems & crems	31-Jul	01-Oct
Environmental health	31-Jul	01-Oct
Roads / Highways	31-Jul	01-Oct
SCOTS	31-Jul	01-Oct
Climate Change	31-Jul	01-Oct
Core highways	24-Jul	28-Aug
Parks	31-Jul	01-Oct
Refuse	31-Jul	01-Oct
Sports and leisure	31-Jul	01-Oct
Street cleansing	31-Jul	01-Oct
Streetscene	31-Jul	01-Oct
Trading standards	31-Jul	01-Oct
Transport	31-Jul	01-Oct
Northern Ireland Core Pls	26-Jun	06-Jul
Northern Ireland services	31-Jan	16-Feb

# Developments

WHAT'S  
NEW?



## Unlock Your Reports with One-to-One Support

Now that you've received your latest Performance Networks reports, it's time to make the most of the data. To help you interpret your results and turn them into actionable findings, we're offering one-to-one online sessions with our subject matter experts.

Each session is tailored to your needs:

- Personalised guidance - work directly with a Performance Networks associate to explore your authority's data.
- Focused support - understand trends, comparisons and identify areas for service improvement.
- Interactive advice - bring your questions and receive practical recommendations specific to your reports.



## How to Book

These sessions are arranged individually to suit your schedule. To book your one-to-one session, please email the Performance Networks team directly and let us know your preferred times and areas of focus.

[performance.networks@apse.org.uk](mailto:performance.networks@apse.org.uk)

Making the most of your data has never been easier, these personalised sessions are the perfect opportunity to get clarity and insight from your Performance Networks reports.

## Members Experiences

Performance Networks values the opportunity to share the experiences of our members and promote knowledge exchange across the network. Learning how different authorities have applied benchmarking data and implemented improvements provides insight and practical ideas for colleagues working in similar areas.

We have produced a video showcasing members' reflections and approaches. It offers an overview of the strategies and practices used across the network and provides an opportunity to gain perspective from peers.

Watch the video here: [Members' Experiences Video](#)

We would like to thank all the members who generously shared their experiences for this video.

## Local Government Reorganisation

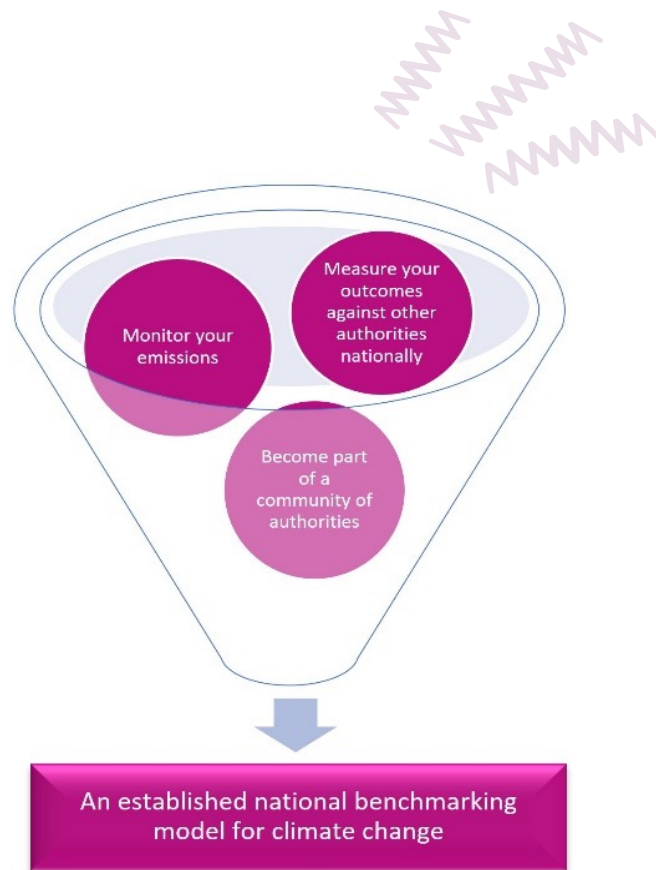
A Local Government Re-organisation steering group was held in June 2025 to design a new module for those councils who are about to face re-organisation in the next few years. Members of the group agreed that a new product should be launched offering a lighter-touch data collection exercise for relevant authorities pre, during and post transition, to aid transformation to the new authorities.

A survey was issued to the steering group to refine the measures which will feature in the model. The new data collection module will be launched at the next LGR and Devolution networks on **31 March 2026**. [To book click here.](#)

## Monitoring & Measuring Climate Change

Understand your authority's climate impact and see how you compare.

The Climate Change Module lets councils measure, monitor and benchmark climate performance against similar authorities across the UK, helping you identify opportunities, track progress and drive change.



### Track key areas including:

- Emissions
- Council buildings & vehicles
- Renewable energy
- Climate adaptation
- Ecological / Carbon sequestration
- \* **Evidence progress on climate commitments**
- \* **Identify priorities for action**
- \* **Learn from peers and best practice**

Scan the QR code for more information

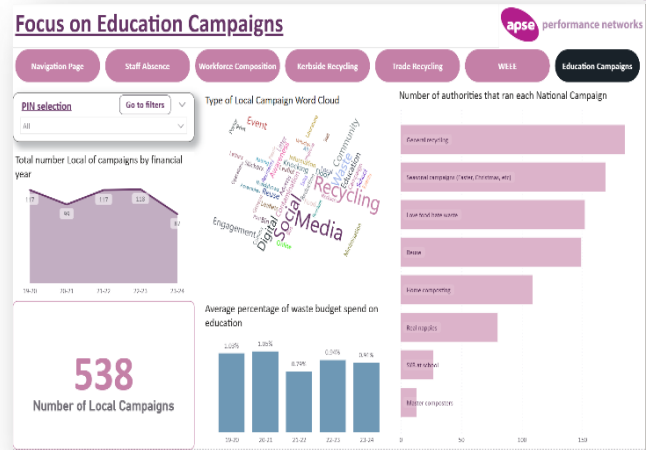


## Enhanced Reporting with Power BI

Performance Networks is continuing to enhance how members access and interact with their data through Power BI reporting. Power BI provides dynamic, interactive dashboards that allow you to explore your performance data in greater detail, identify trends quickly and make more informed decisions.

We have now produced Power BI reports for:

- Building Cleaning
- Building Maintenance
- Climate Change
- CLAMS – Cleaning Audit Management System
- Refuse Collection
- Northern Ireland Core PI data set



The team is currently working on developing Power BI reports for Roads/Highways and Cemeteries and Crematoria, ensuring a comprehensive suite of interactive reporting tools across key service areas.

Power BI reports complement our existing legacy reports, which remain available to provide static data snapshots. This dual approach allows members to benefit from flexible analytics while retaining access to tried-and-tested reporting methods.

By introducing Power BI, Performance Networks aims to enhance data accessibility, improve insights, and support evidence-based service improvement across the network.



## New Briefing: Performance Networks and National Frameworks

APSE has published a new briefing on using Performance Networks data within the national frameworks across the devolved governments. It highlights how benchmarking can support local authorities in aligning with broader performance arrangements while maintaining a focus on service improvement.

**Read the briefing:** [Performance Networks and National Framework](#)

## New research into frontline data

We're pleased to highlight the release of the APSE Local Government Frontline Data Roundup 2025. A comprehensive annual snapshot of key performance data from local authorities across the UK. Whether you're benchmarking performance, informing strategic decisions or staying on top of sector developments, this roundup offers essential insights into how councils are responding to ongoing challenges and opportunities.

**See the research:** [Local Government frontline data roundup](#)

