



Derry City & Strabane  
District Council

Comhairle  
Chathair Dhoire &  
Cheantar an tSratha Báin

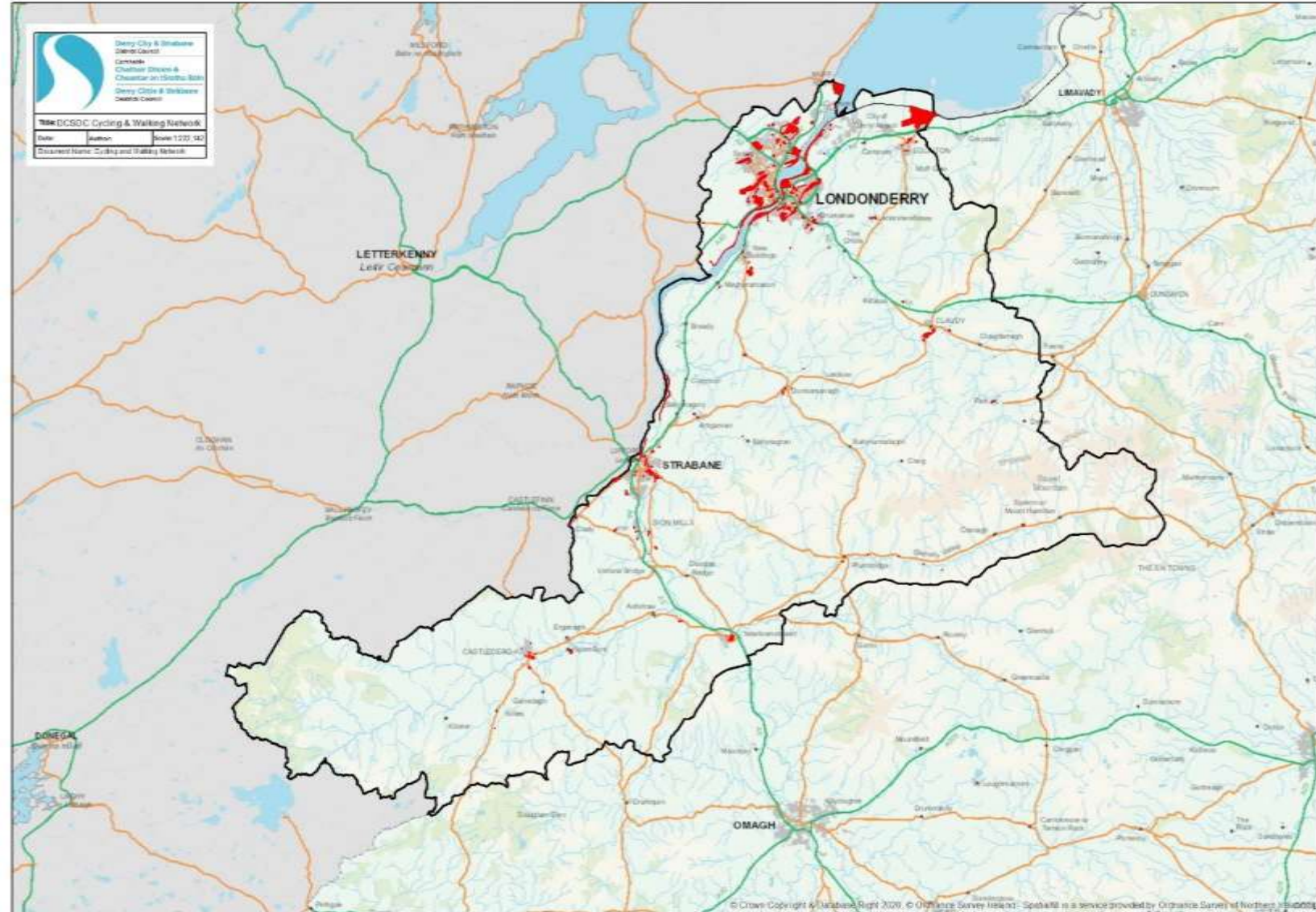
Derry Cittyie & Stràbane  
Destrìck Cooncil

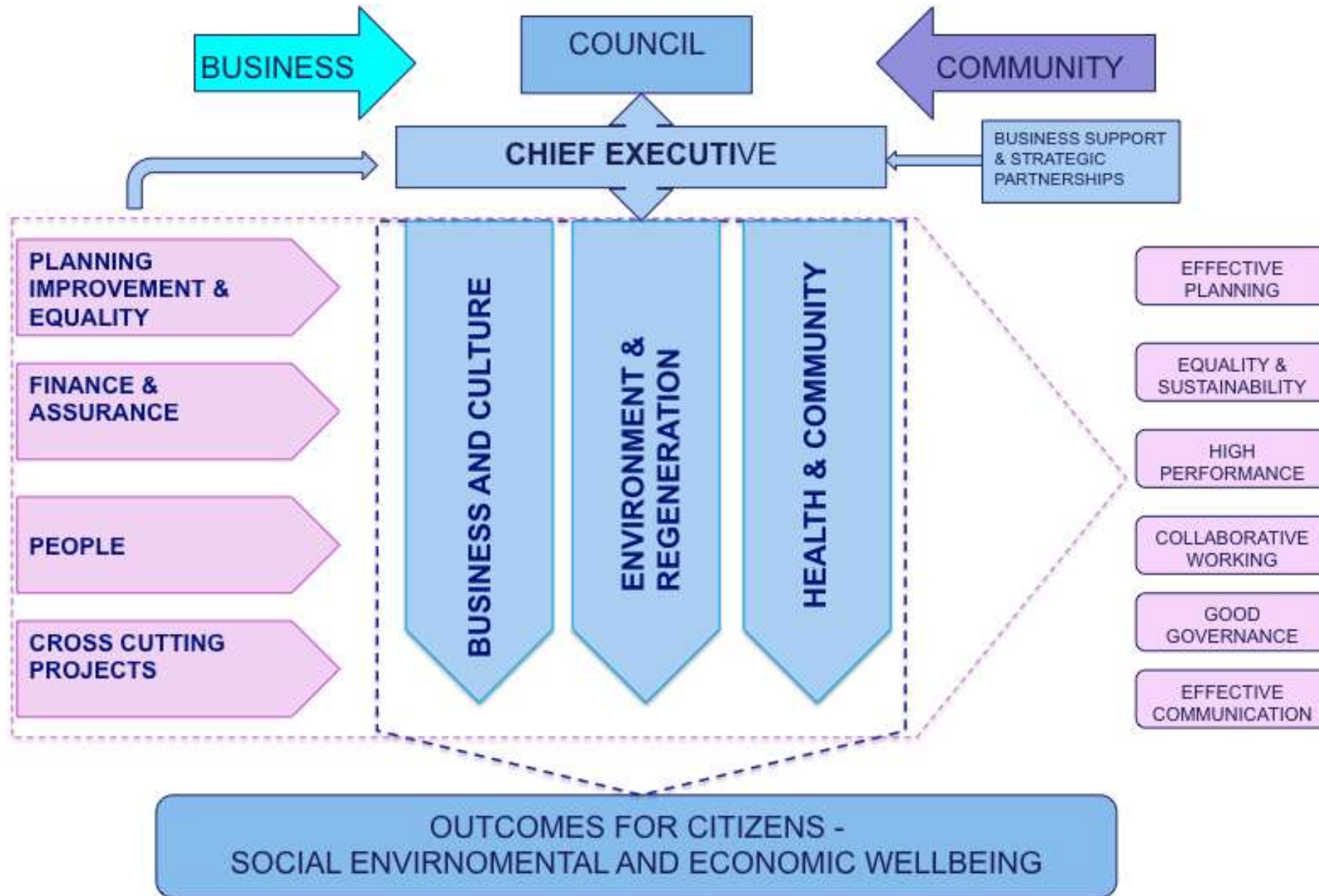
# Walking and cycling provision as part of a Green Infrastructure approach

Mike Savage, Greenways Development Officer,  
Derry City and Strabane District Council

# Derry City and Strabane District Council

- 1,249 km<sup>2</sup>
- Population 150,000
- 100,000 of those in Derry, 15k in Strabane
- Council owns around 750ha of land – 700 in former DCC, 50k in former Strabane DC

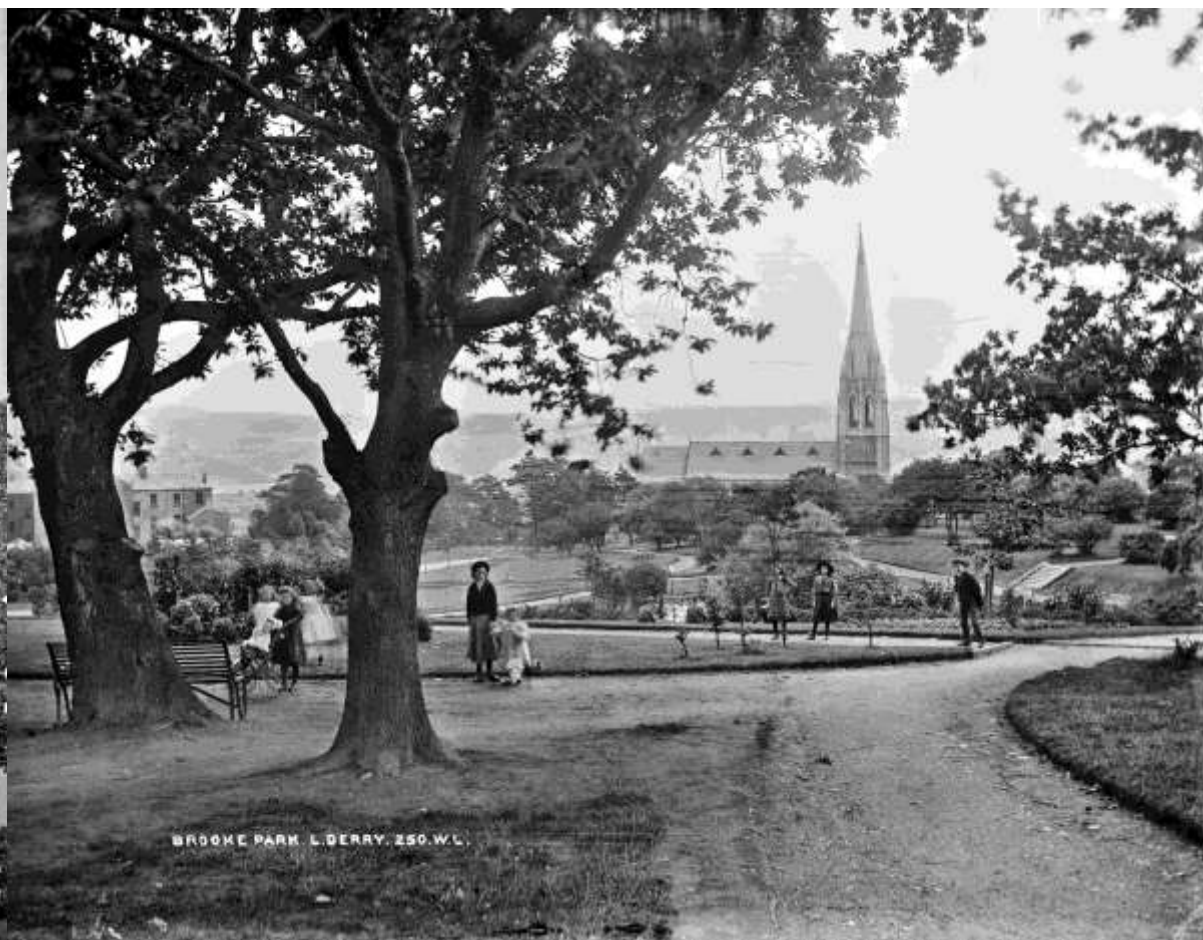




# Brooke Park Restoration



# Historical images of the Park –Early C20







# Key Elements of the Master Plan

- Restoration of the Listed entrance and railing
- Restoration of listed Gate Lodge
- Restoration of the Listed Robert Ferguson Statue
- Landscape the Park- in keeping with the original design, appropriate to the setting.
- Annual bedding plants
- Restoration of the oval pond
- Improve the path network, seating, street furniture and lighting
- Develop the Gwyn's pavilion (café on the site of the former Gwyn's institute)
- New playground, set within landscaped areas
- New Horticultural Training centre in partnership with TCV
- Outdoor growing space
- New events area/Grass Pitch
- New 3G pitch
- New Contact Sports Centre
- Floodlighting at the Bowling Green

# Gate lodge & Ferguson Statue



# Gwyn's café & Play Garden



# New Pond & Planting

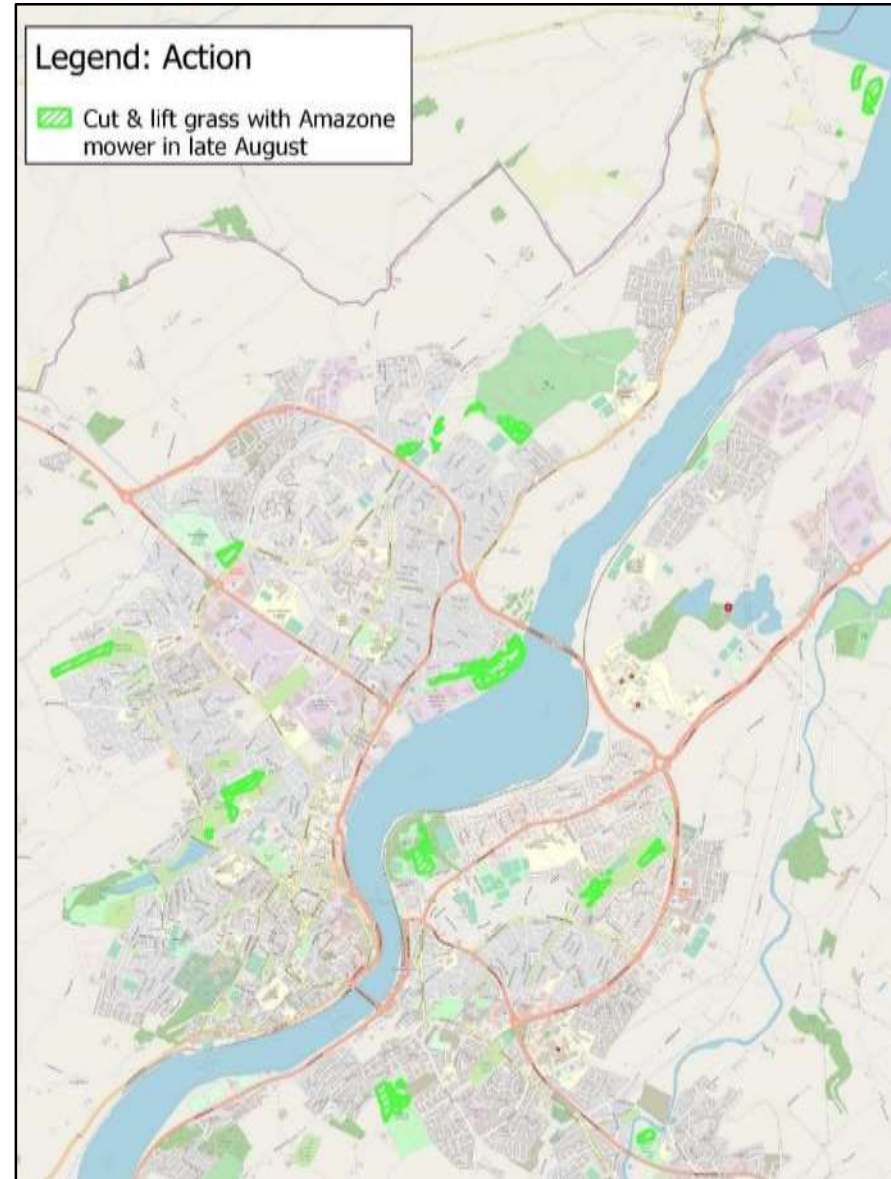


# Horticultural Training Centre



Planting for biodiversity and sustainability

# Council's Pollinator Plan



# Don't Mow Let It Grow



**DON'T MOW (YET)**

This grassland is being managed by Council, to deliver a new approach in public grassland management under Council's Green Infrastructure Plan, to help improve biodiversity.

Please clean up after your dog.

Please do not litter.

[derrystrabane.com/biodiversity](http://derrystrabane.com/biodiversity)

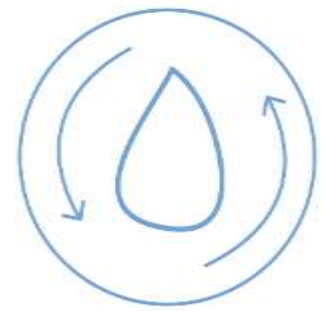
**DON'T MOW let it grow**

In partnership with the AB-Inland Pollinator Plan





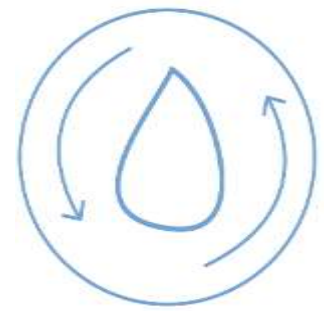
# Carbon savings



- A reduction in grass cutting from ~15 to one / two cuts a year results in saving 2T of carbon in 2021. This helps Council to reduce the carbon footprint of our operations.
- For example, at Bay Road Park Local Nature Reserve, we saved 197 kg CO<sub>2</sub> in 2020 (2L petrol x 3.3 ha x 2.3 kg CO<sub>2</sub> x 13 less cuts) (Defra, 2019).



# Summary



- A landscape scale approach to grassland management, can create a network across the District & region for pollinators.
- Create space for people & wildlife.
- Provide additional ecosystem services benefits, for example, pollination & health & well-being services.
- Reduce carbon footprint of operations by reducing grass cutting.

Walking and cycling provision as part of a  
Green Infrastructure approach

# Green Infrastructure or 'green' infrastructure?

- Some are using 'green infrastructure' to mean cycle paths, railways, smart lighting – grey infrastructure which is greener
- Green Infrastructure (GI) is a way of looking at natural components of the environment in terms of:
  - The assets we have
  - The functions they perform
  - The service they provide
  - The benefits we derive

# Green Infrastructure or 'green' infrastructure?

- Some are using 'green infrastructure' to mean cycle paths, railways, smart lighting – grey infrastructure which is greener
- Green Infrastructure (GI) is a way of looking at natural components of the environment in terms of:
  - The **assets** we have
  - The functions they perform
  - The service they provide
  - The benefits we derive



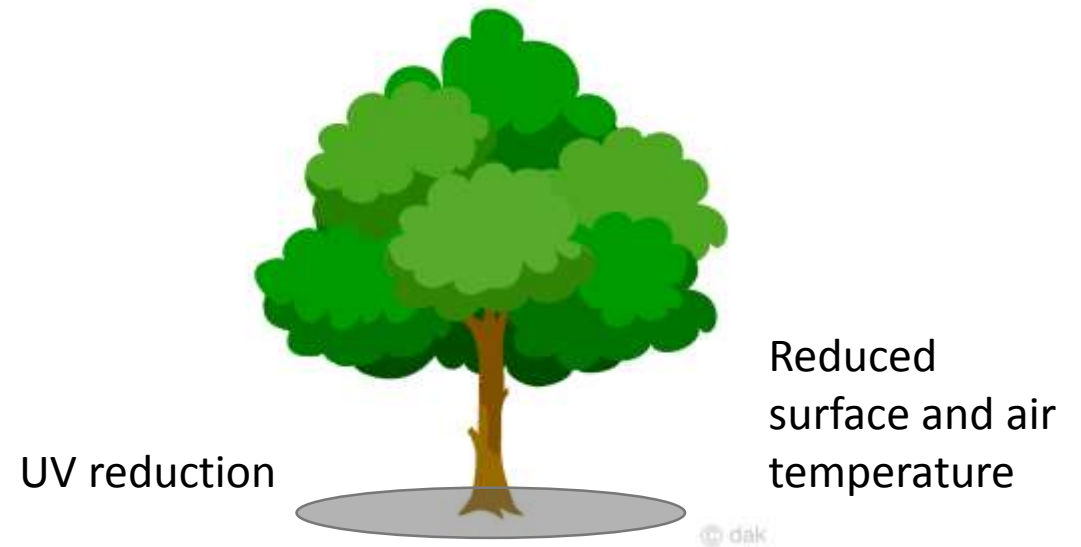
# Green Infrastructure or 'green' infrastructure?

- Some are using 'green infrastructure' to mean cycle paths, railways, smart lighting – grey infrastructure which is greener
- Green Infrastructure (GI) is a way of looking at natural components of the environment in terms of:
  - The assets we have
  - The **functions** they perform
  - The service they provide
  - The benefits we derive



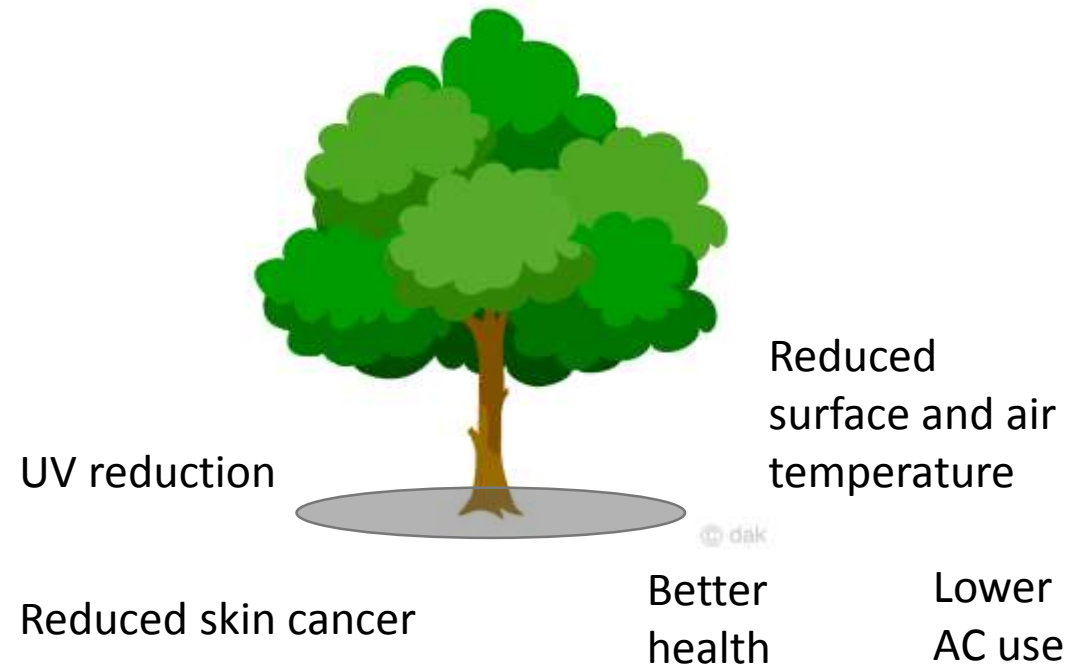
# Green Infrastructure or 'green' infrastructure?

- Some are using 'green infrastructure' to mean cycle paths, railways, smart lighting – grey infrastructure which is greener
- Green Infrastructure (GI) is a way of looking at natural components of the environment in terms of:
  - The assets we have
  - The functions they perform
  - The **service** they provide
  - The benefits we derive

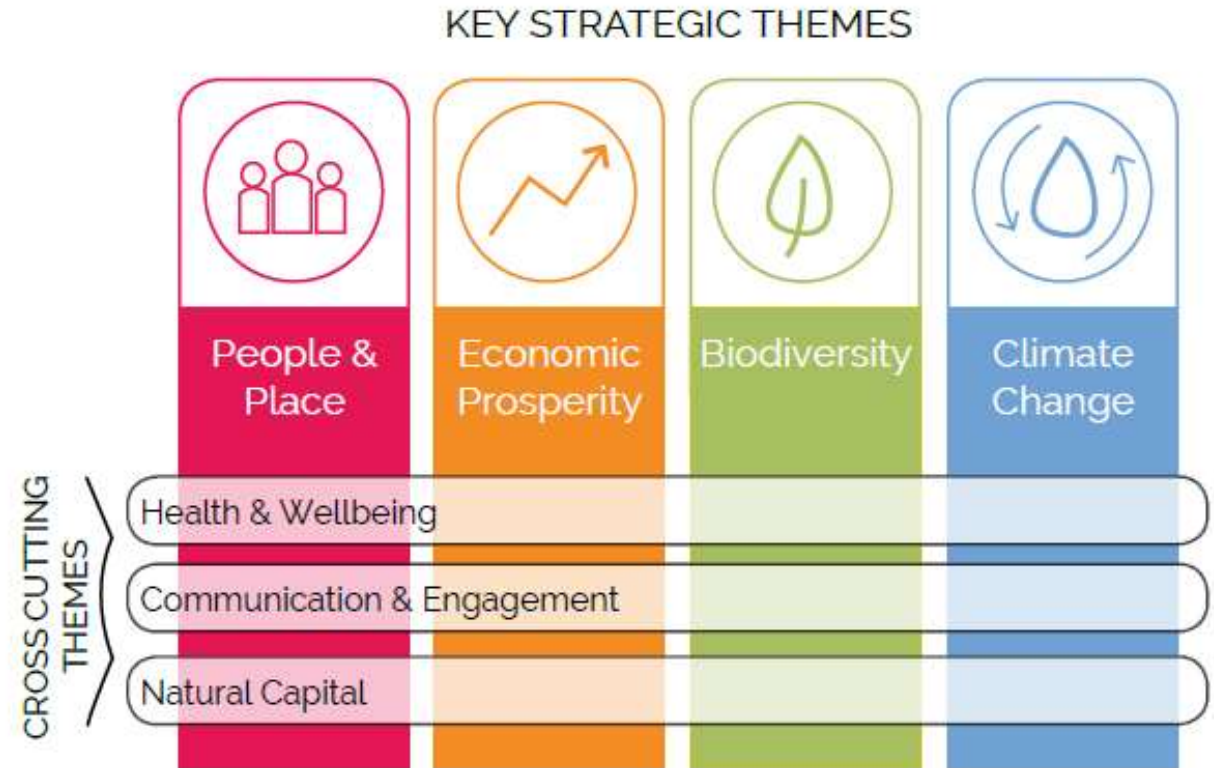


# Green Infrastructure or 'green' infrastructure?

- Some are using 'green infrastructure' to mean cycle paths, railways, smart lighting – grey infrastructure which is greener
- Green Infrastructure (GI) is a way of looking at natural components of the environment in terms of:
  - The assets we have
  - The functions they perform
  - The service they provide
  - The **benefits** we derive



# Green Infrastructure Plan 2019-2032





Derry City and Strabane District Council's greenspaces supply more than £75 million in benefits (£500 per adult resident) each year.

## Derry City and Strabane District Council's Owned Green & Blue Spaces Natural Capital Account

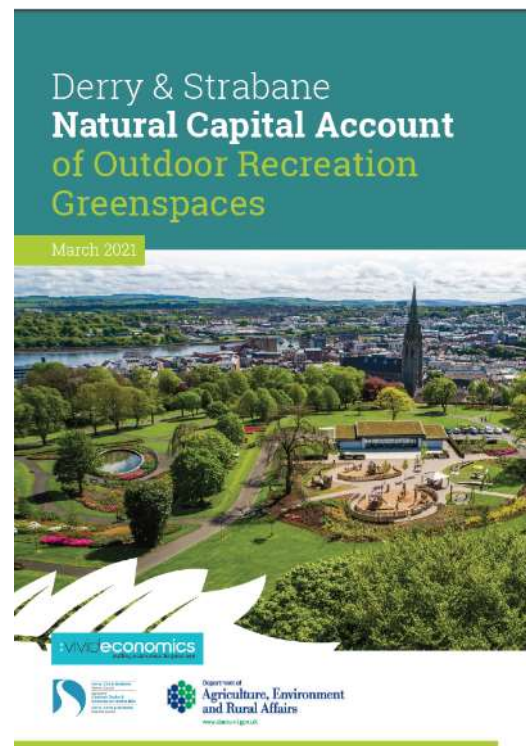


For every £1 spent on the Council's greenspace maintenance and investment, it provides £22 of benefits per year.



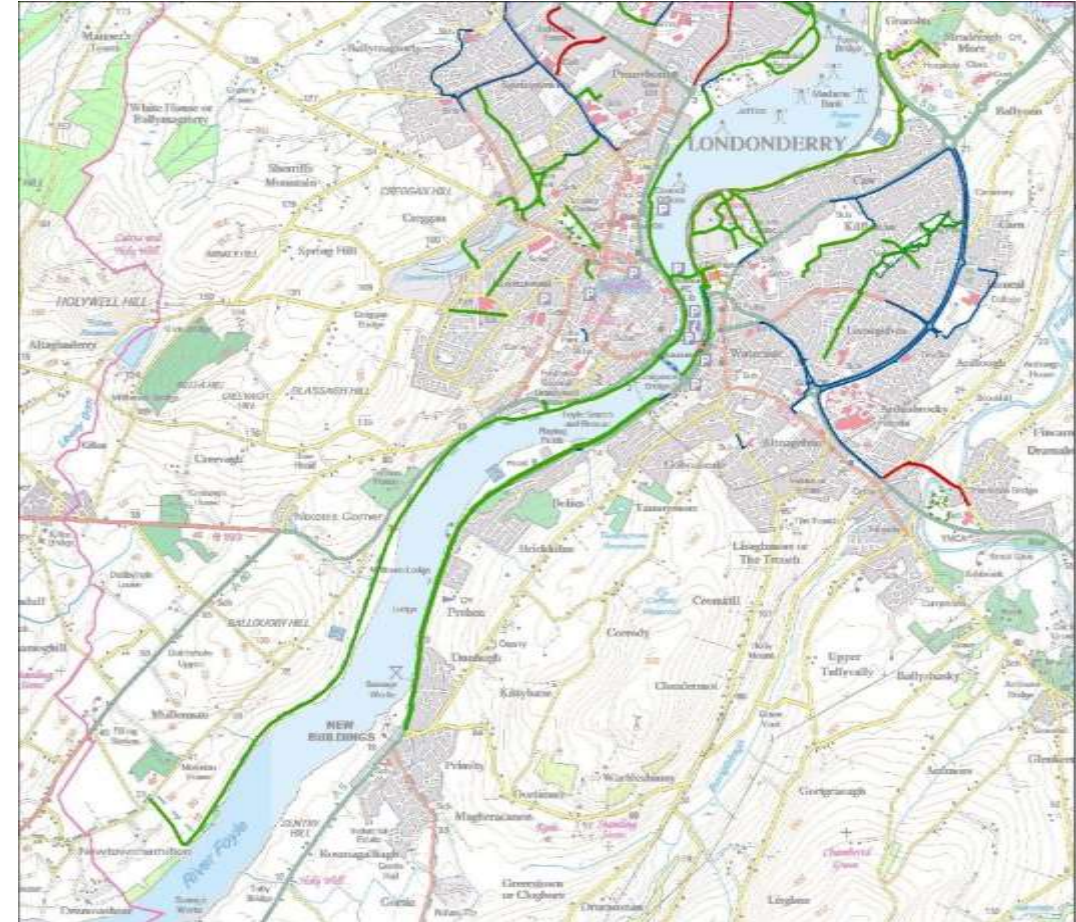
Mental wellbeing accounts for more than half of the value provided by the Council's greenspaces.

- The District has approximately 9,000 hectares of publicly-owned and accessible greenspaces, greenways and woodlands (the annex provides a list of public greenspace providers in the District);
- 8.5 million visits were made to publicly-owned greenspaces in 2020, providing £141 million in value to residents annually; and
- Every £1 spent on investment and maintenance of greenspaces generates £21 of benefits, an increase from 2019<sup>1</sup>.



# Walking and Cycling Network

- Developed by Derry City Council Access Forum > Active and Sustainable Travel Forum > Green Infrastructure Stakeholder Group
- DCC started developing Greenways 20+ years ago
  - Prehen Greenway 1999
  - Foyle Valley Greenway 2000
  - Crescent Link 2005-7
  - Waterside Greenway 2011-13
  - Queen's Quay 2012

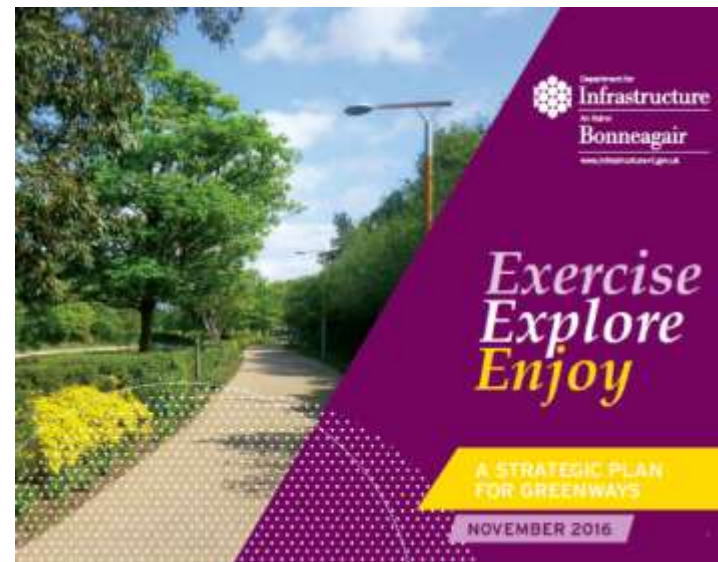


# Strategic Framework for Greenways

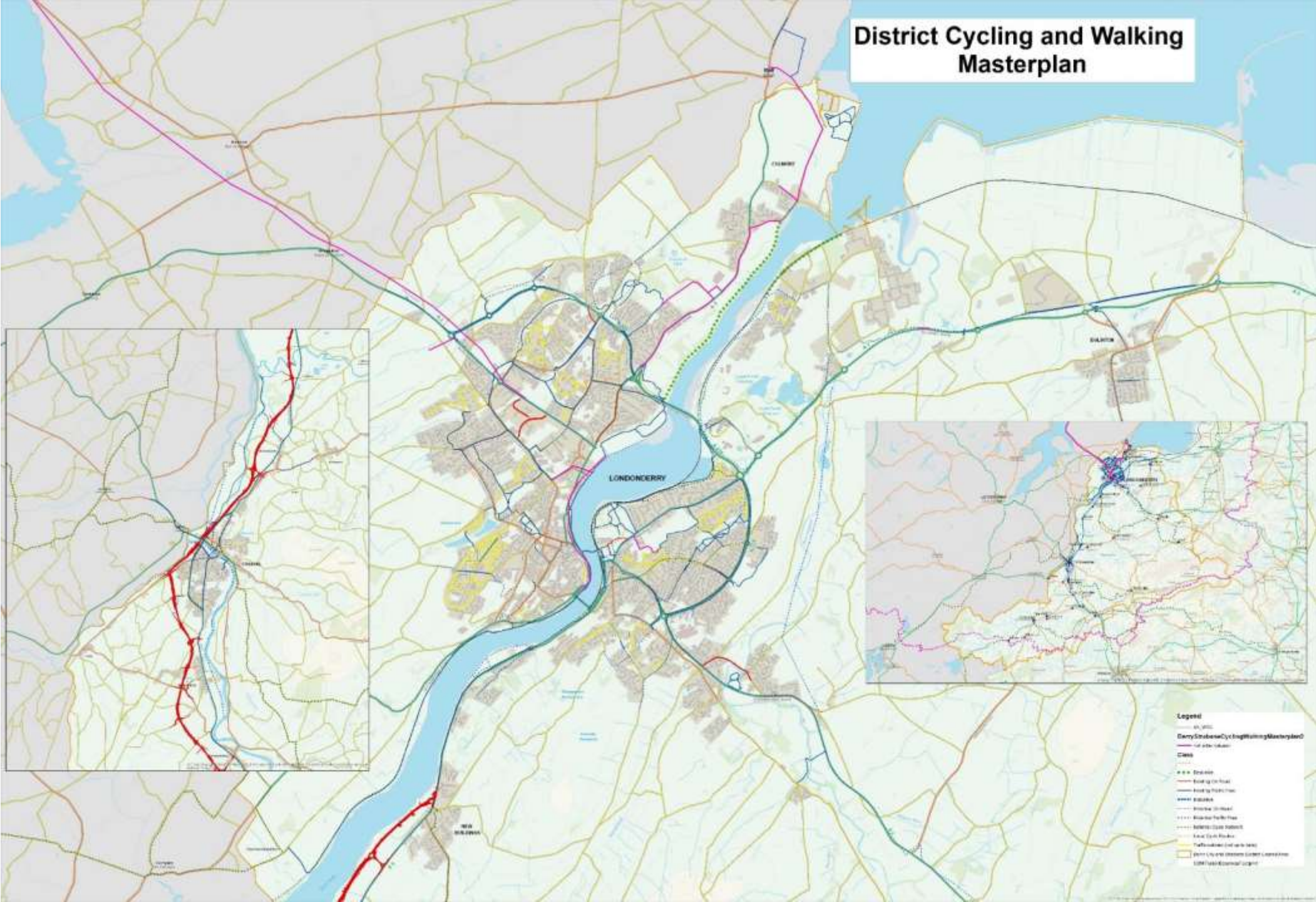
- North West Greenway Plan (2015)



- NI Greenways Strategy (2017)



# District Cycling and Walking Masterplan



# Prioritising

- Importance 1-3
- Deliverability 1-3
- =Priority 1-9



# COVID

- Intense pressure on greenspaces
- Big increase in numbers
- Increased political support? (rural and urban projects)

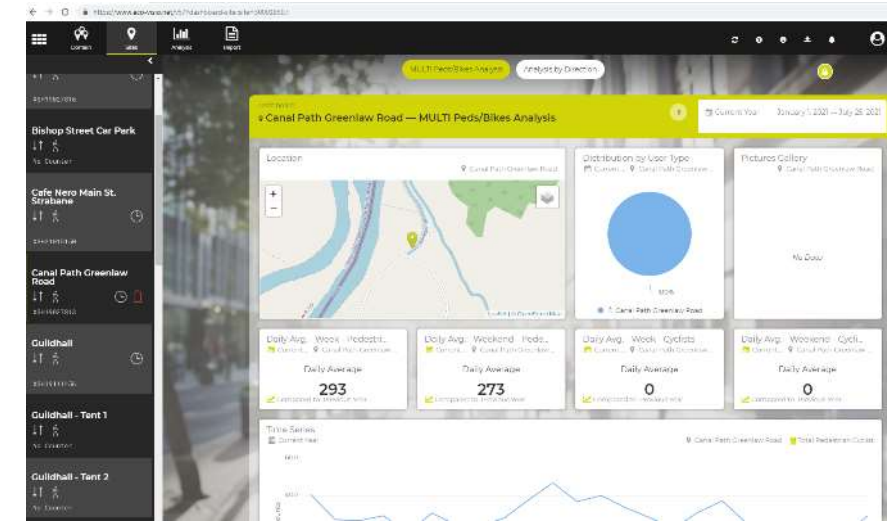
# Recreation or modal shift?

- Many funders have been focussed on modal shift
- Recreation is currently bulk of use
- Hard to estimate/measure modal shift
- Design a network that functions for modal shift, will still work for recreation

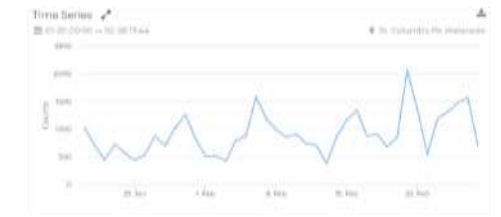


# Counting

- Developed fleet of counters over many years
- Older ones unreliable
- Newer ones not only more reliable but have great interface

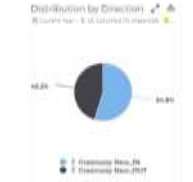
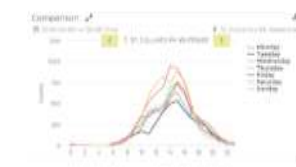


01-20 00:00 → 02-28 13:44  
Total  
**36,422**



01-20 00:00 → 02-28 13:44  
Daily Average  
**911**

01-20 00:00 → 02-28 13:44  
Peak Day  
Sunday  
21st Feb 2021  
**2,069**



# Segregated provision or shared use?

- Greenways
- Local shared use paths
- Urban arterial routes
- Managing conflict



# Council or DfI?

- 'Classic' greenways are the ideal
- But main roads are often real contenders
- DfI Roads - new Green Blue Active Travel teams
- Need to work closely together to achieve hybrid solution

# Council or DfI?



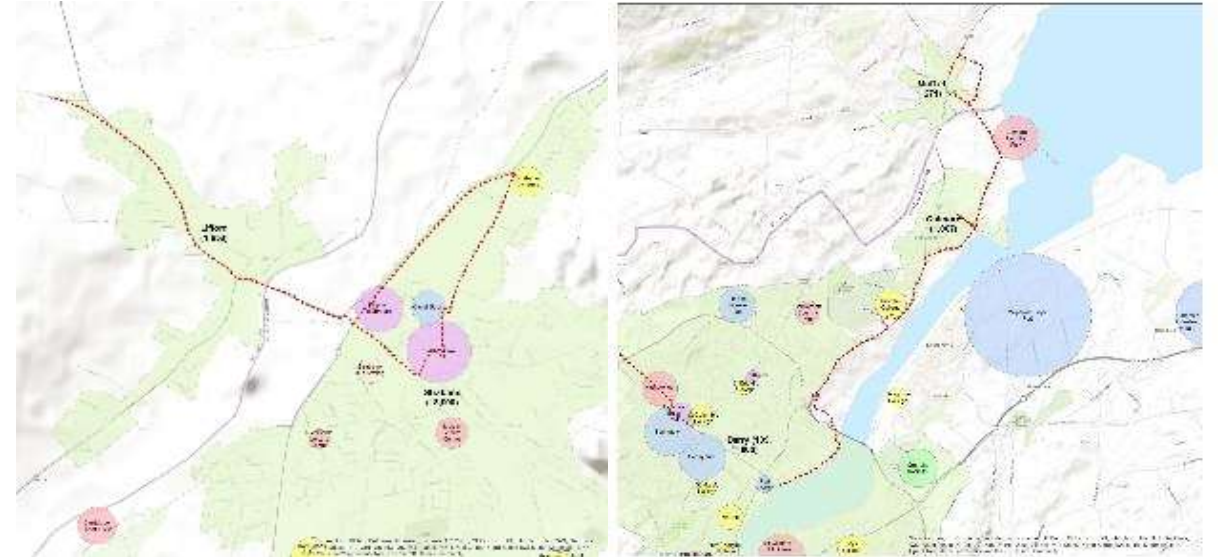


# Case Studies

# NW Greenways



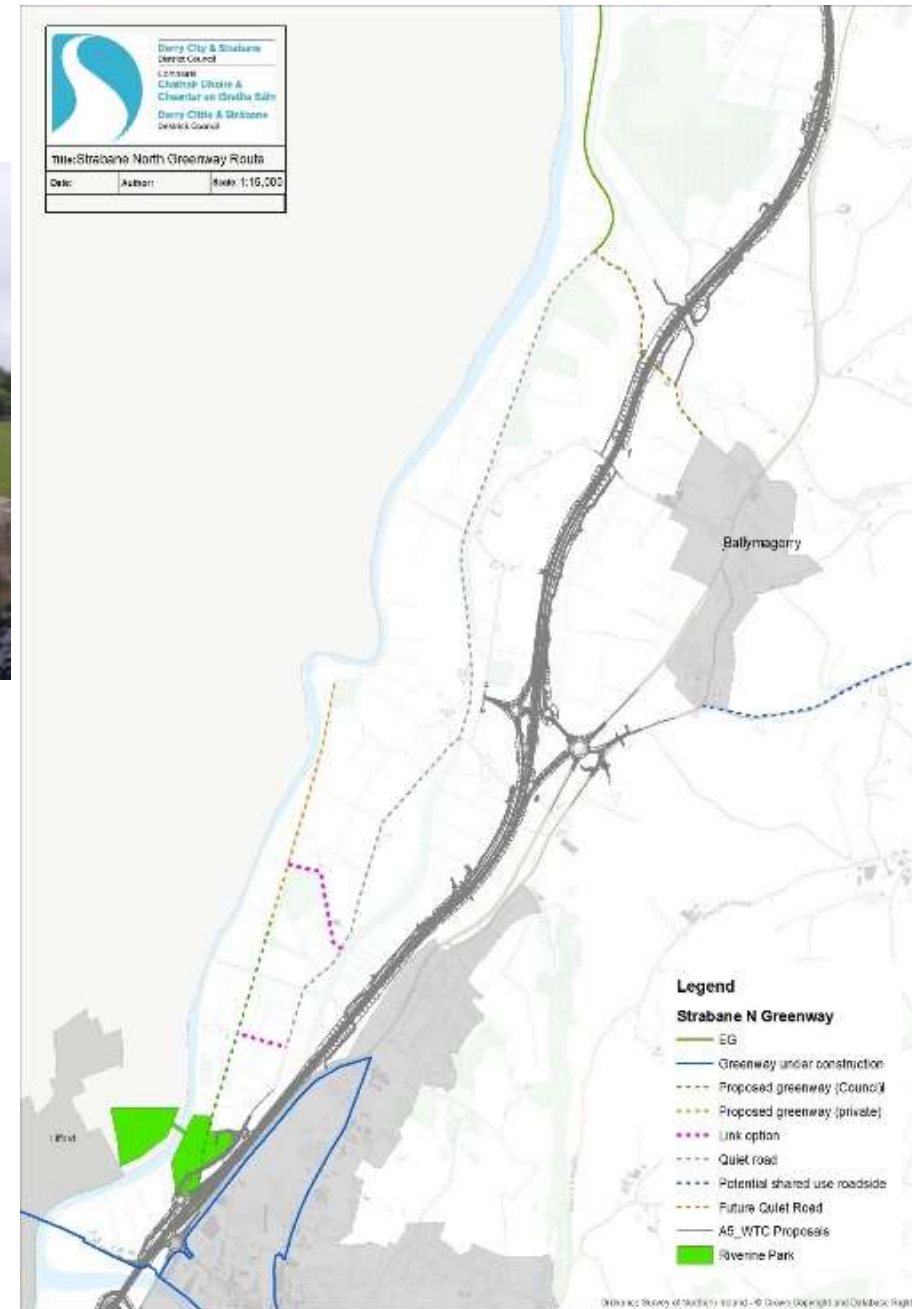
- Lifford-Strabane
- Derry-Muff
- Derry-Buncrana



# Strabane Canal

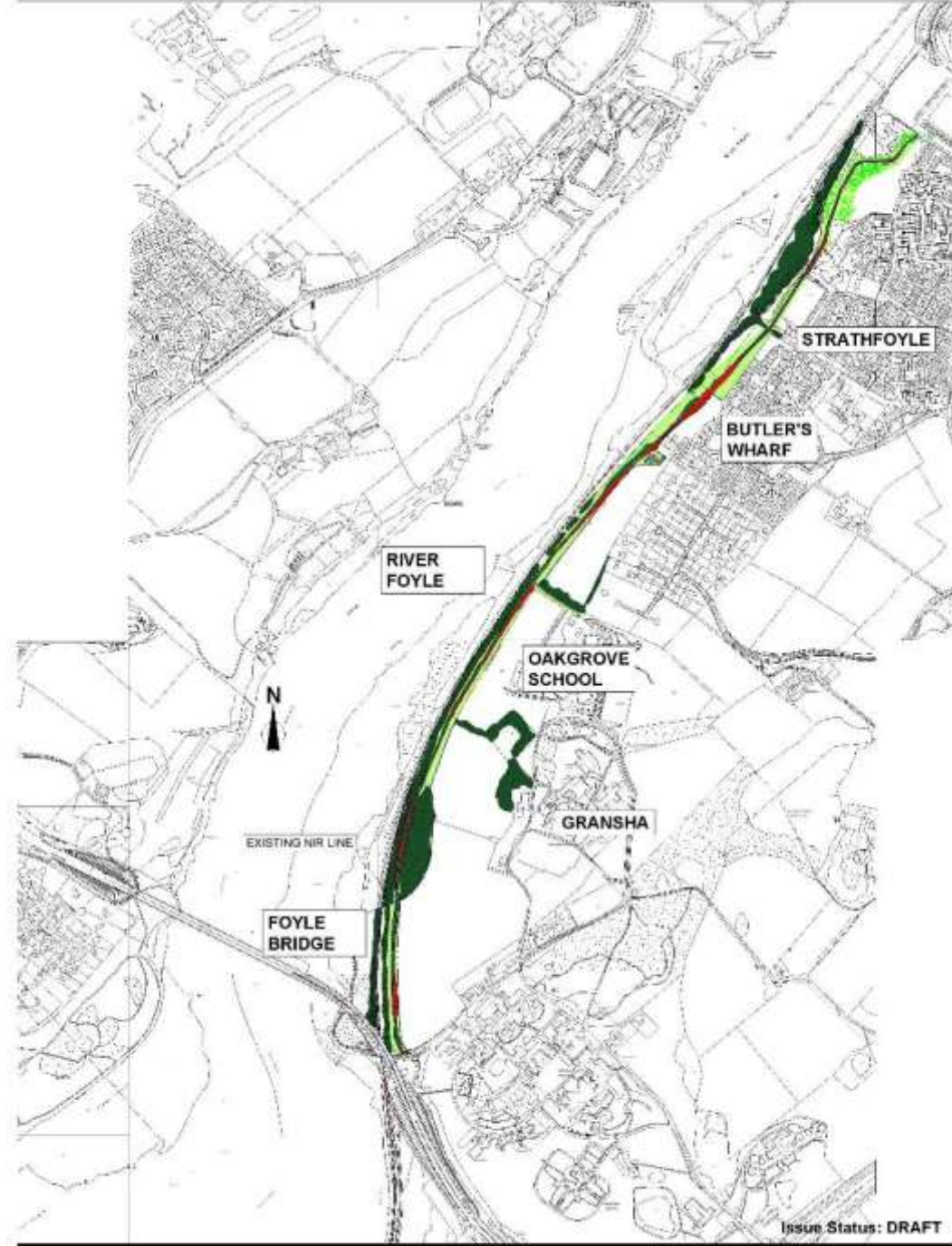


# Strabane North Greenway



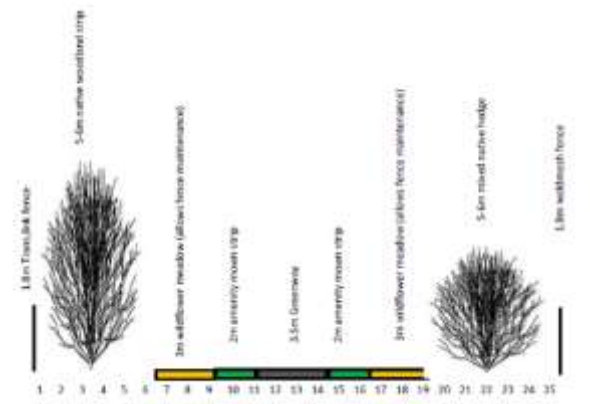
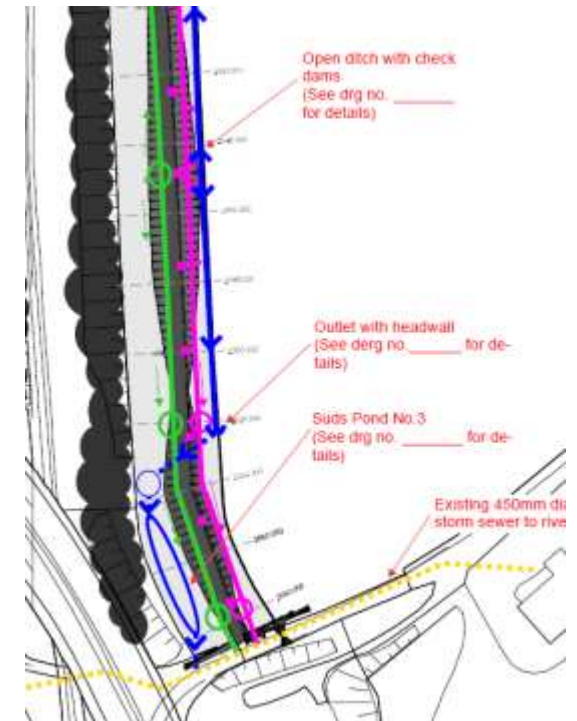
# Strathfoyle Greenway





Issue Status: DRAFT

# KEY STRATEGIC THEMES



# Key lessons from DCSDC

- Allow for a long lead-in time
- High spec means long life
- Have a vision and do what you can now – eventually you may be able join up



---

**Derry City & Strabane**  
District Council

---

Comhairle  
**Chathair Dhoire &  
Cheantar an tSratha Báin**

---

**Derry Cittie & Stràbane**  
Destrìck Cooncil

Mike Savage, Greenways Development Officer

[michael.savage@derrystrabane.com](mailto:michael.savage@derrystrabane.com)