

APSE_30th July 2021

South Lake Leisure Centre, Craigavon

Andrew Stevenson - Project Director



Content

1- In A Nutshell

2- Design Features

3- Creating Real Value



In a Nutshell

In a Nutshell

Scope

- New build indoor leisure centre
- A watersports centre
- Replaces 4 existing facilities
- c15,000m² gross floor area
- Opened (sort of) Nov '20

In a Nutshell

Facilities

50m Pool (with
moveable floor
level)

20m Learner pool

Leisure pool

Health &
Wellbeing Suite

The largest gym in
NI @ 1,000m²

8-Court sports hall

2 Squash courts

Soft play area

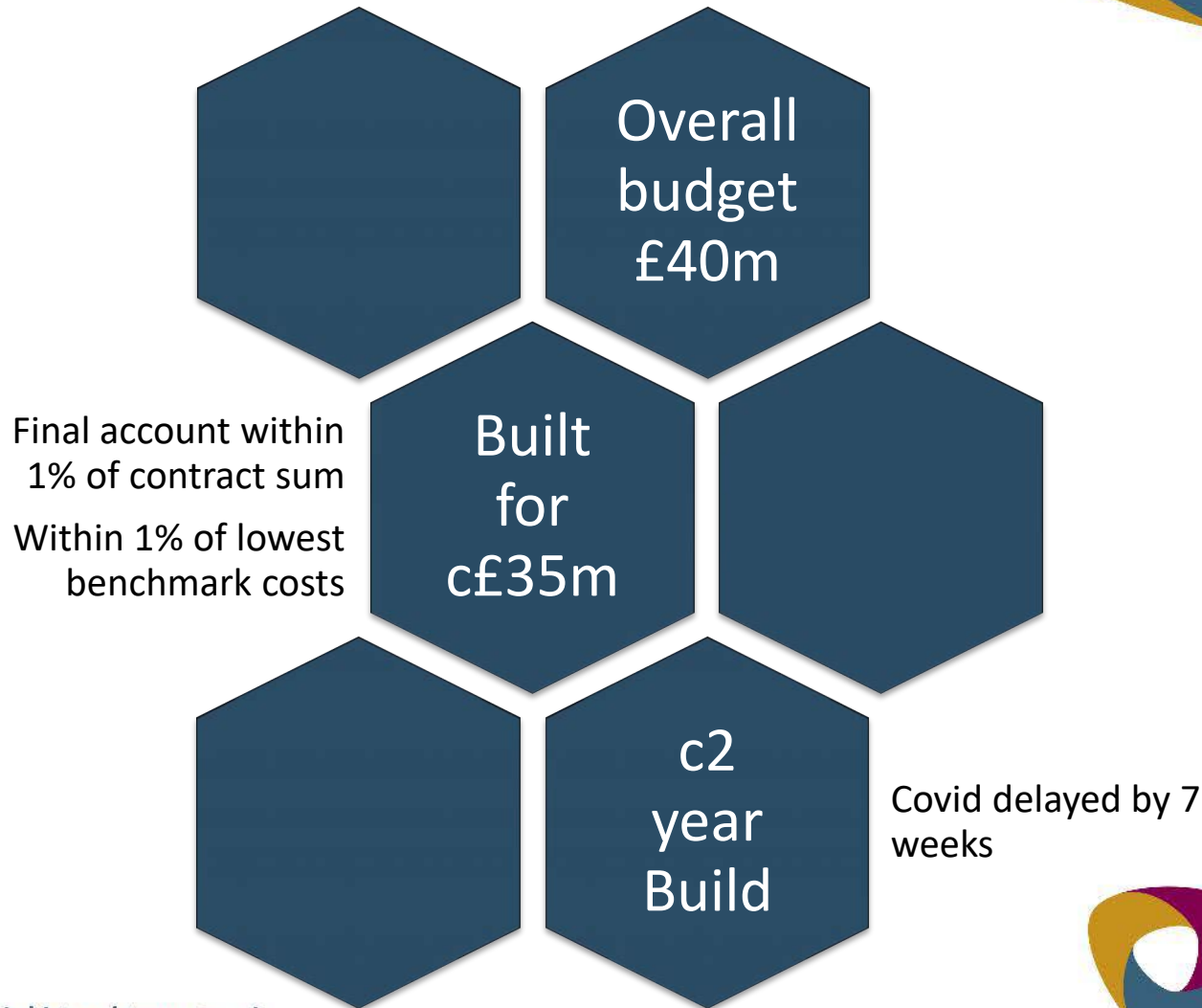
Sensory Room

Range of studios
including
dedicated spin &
dance

Activity rooms

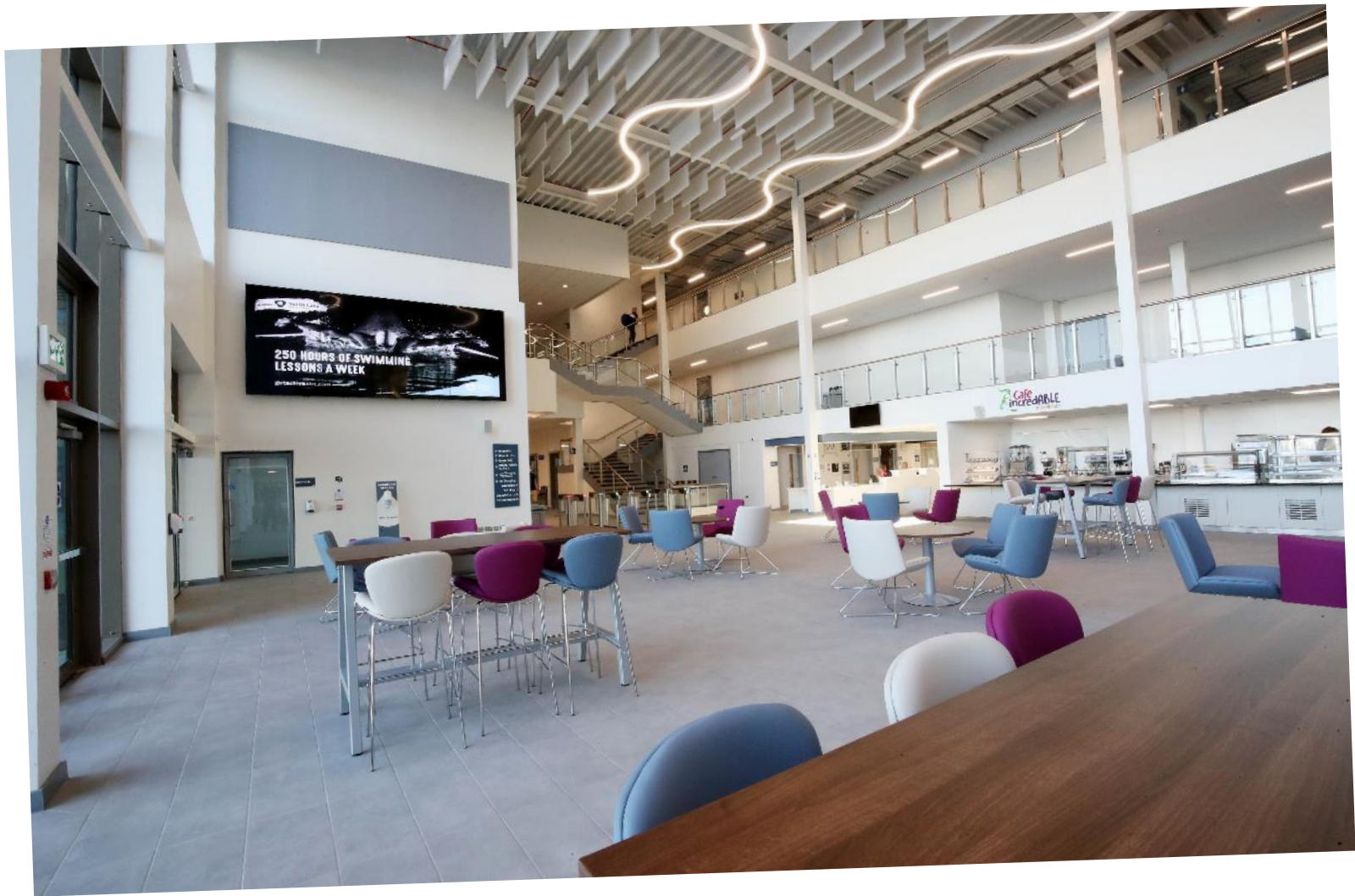
Café

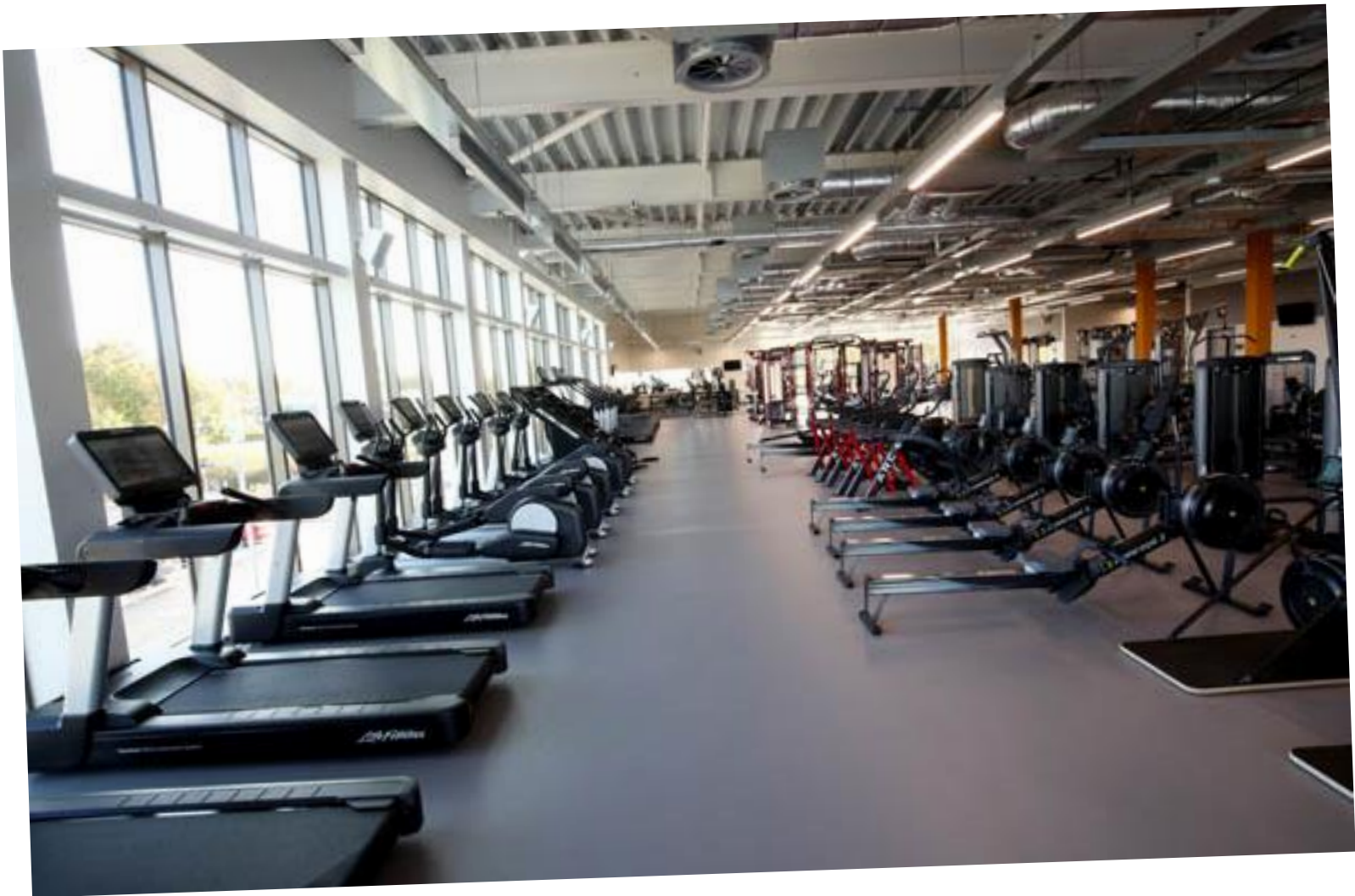
The Numbers



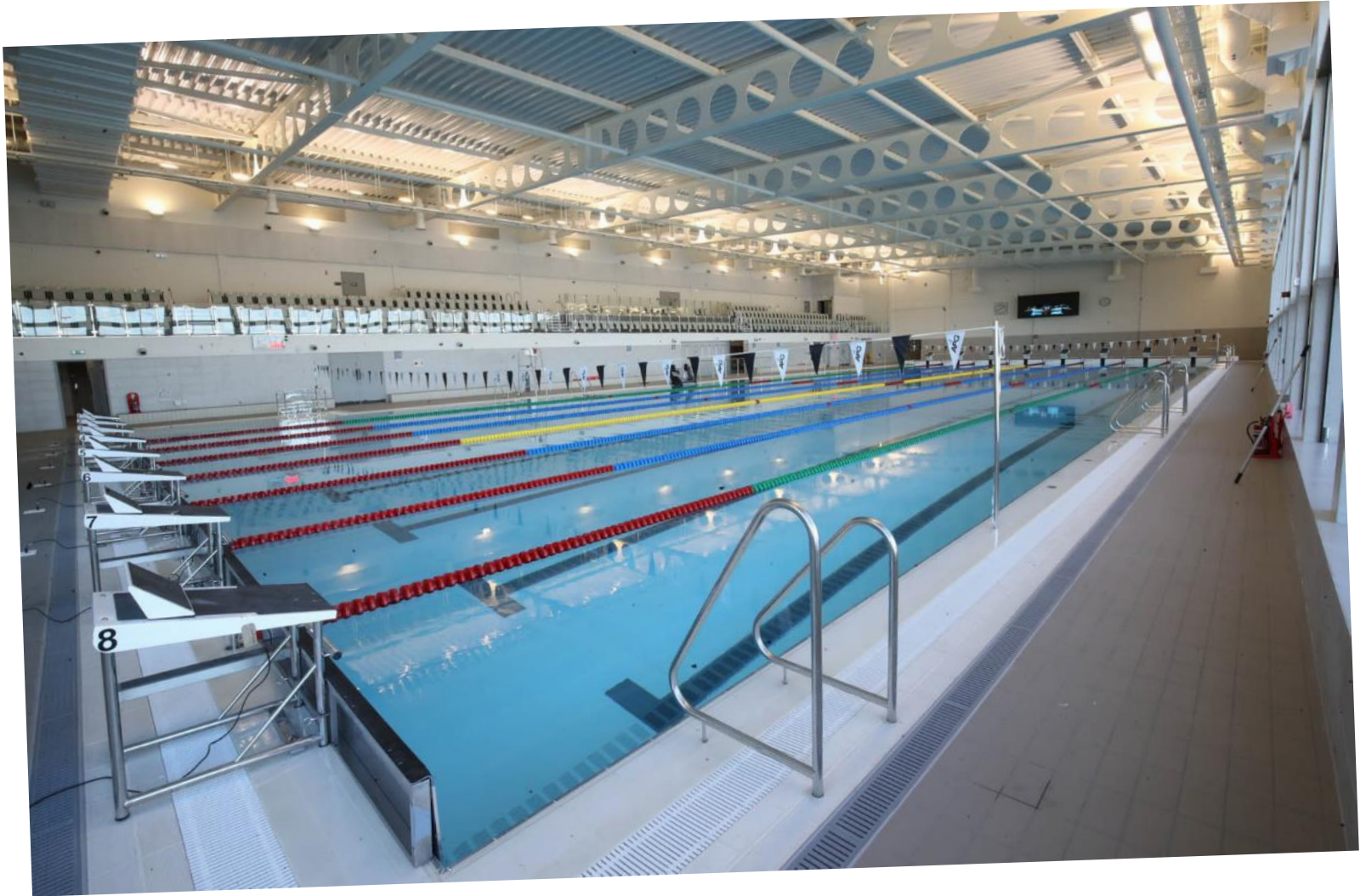
Design Features













BREEAM Very Good

DSNI ISF Excellence

Already won several awards including for social value

Inclusive Sports Facility Accreditation Scheme

- Encourages & recognises excellence in design of sports facilities
- Aligning with DSNI's Accessible Sports Facilities Design Guidelines (2016)
- 2 levels; SLLC achieved 'Excellence'



Design Features

DSNI ISF

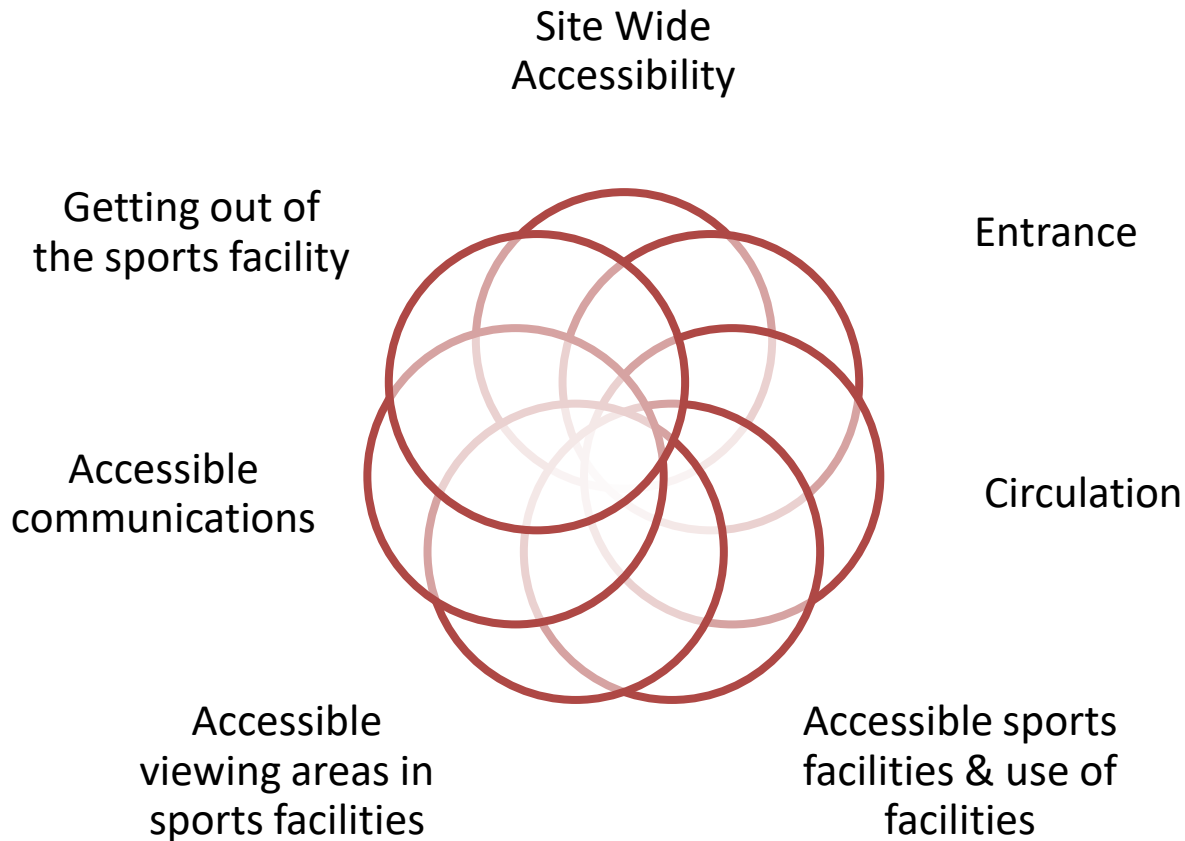
Way beyond
DDA &
Building
Regulations
provisions

Designed to
meet sporting
requirements
of people with
disabilities

Particularly
for wheelchair
sports &
access to
fitness
equipment



DSNI ISF; Scope



Creating Real Value

Milking the Build Process



....a means to an end

Early Contractor Involvement

- Unlocked significant opportunities
- Enabled in a framework appointment
- Kick-started a 4-year relationship

Community Engagement

Providing a positive legacy in the community through; skills development, education, employment and local capital investment.



FARRANS



Short courses
(persons)



TARGET **171** ACTUAL **4158**



62
University Research
Projects of 47 target



3656 STUDENTS
attended School/College
Workshops of 790 target



100%
Progression into **employment**



263.5 weeks
Work Experience 18+ years
of 145 week target



80
National Vocational
Qualifications (NVQs)
of 73 target



100%
Health &
Safety Tests



308 weeks
Apprentices - project initiated
of 264 week target



723 weeks
Apprentices - existing
of 527 week target



100%
Construction Skills
Certification Scheme
(CSCS)

1313



School/College/University
site visits of 1185 target



240 weeks
Work Experience 15-17 years
of 145 week target



100%
Local Labour Employed
in a 40 mile radius



45 Considerate
Constructors Scheme
of 40 target



121%
Local Spend
in a 40 mile radius



HEALTH & SAFETY
500,000 working hrs
with **zero** reportable incidents

Thank you for listening

Any questions?

