



# The Albert Halls Bolton

Presented by  
Stephen Anderson  
Head Chef

**Bolton  
Council**

# A little bit about us

- The Albert Hall Theatre – capacity 673
- Festival Hall – capacity 400
- Lancaster Suite – capacity 200
- Dido Suite – capacity 120
- Reception Room – capacity 60
- Banqueting Suite – capacity 100
- 6 Meeting Room – capacities 12 to 60
- Mere Hall – capacities 12 – 150
- Carnegie Hall - 150

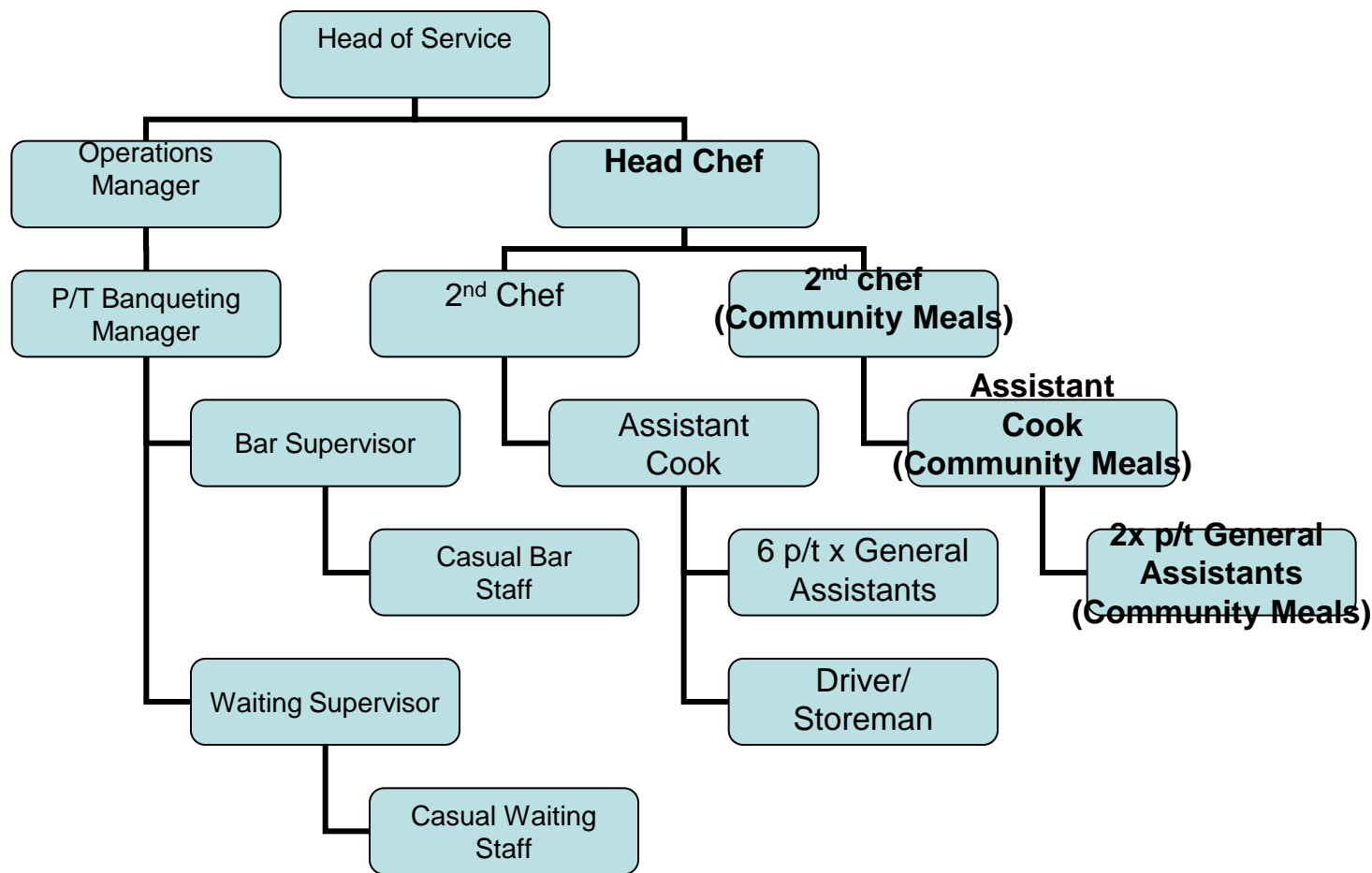


# What we do?

- Shows, Concerts and Pantomimes
- External Hires
- Weddings – at 3 venues
- Banquets
- Seminars, Conferences etc
- Council Meetings
- External Meetings
- Dances
- Civic Dinners
- External Catering
- Members and Staff Restaurant – now open to the public
- Supply Provisions
- Supply Nurseries and the local College
- Bars
- Production of Community Meals – later this year



# How we do it?



# What do we provide?

- 36,234 Refreshments
- 2665 Working Lunches
- 33 Mayoral Dinners/Lunches
- 5 Civic Functions
- 52 Weddings
- 150 External Catering
- 320 days Nurseries/College
- 178 Bars



# Services

- The Dido Restaurant
    - Opening Hours 8.15am – 2.00pm
    - Breakfast
    - Lunch
- Open to the public
- Annual Income £75,000



# Services

- Hospitality Service

- has been replaced with self vending service
- working lunches/teas
- Annual Income £115,000

- External Catering

- provides buffet lunches to other venues including private companies
- Annual Income £25,000

- Civic Catering

- Mayoral Functions
- Civic Dinners



# Services

- Function Catering

3 function venues ( 1 recently refurbished)

new package deal for wedding ( includes room dressing)

new wedding brochure

wedding fair

Annual Income £140,000

- Bars

5 bars between 3 venues

Theatre Bar and Mobile Bar

Annual Income £130,000



# Nurseries and College



## Nurseries



Started as a loose arrangement for staff cover with one nursery

Current annual income £25,000



## College

Provision of 120 meals per week

Current annual income approx £10,000



# Future Services

- Production of Community Meals
- Starts June 2011
- 500 meals per day
- Cost including labour approx £1.20 per meal (£218,400)
- Target Annual income £327,600
- Annual surplus £109,200



# Marketing

- Commercial Business
  - Wedding Fairs
  - Press Adverts
  - Word of Mouth
  - Website
  - Packages including Weddings, and Christmas
  - Competitor analysis



# Financial Issues

- Overall run as a Commercial Business
- Expected to make a return to the Albert Halls in 2009/10 contributed over 38K
- Diversity of the service to bring in money/business
- Sustainability of the service





**THANK YOU FOR LISTENING  
IF YOU HAVE ANY QUESTIONS  
PLEASE DO NOT HESITATE TO ASK**

**Contact Details  
Stephen Anderson  
[stephen.anderson@bolton.gov.uk](mailto:stephen.anderson@bolton.gov.uk)**