

ALC

Aluminium Lighting Company

Aberdeen City's use of Aluminium Lighting Columns
– a case study





Agenda

- Background
- Proposal
- Implementation
- Benefits
- Current Situation

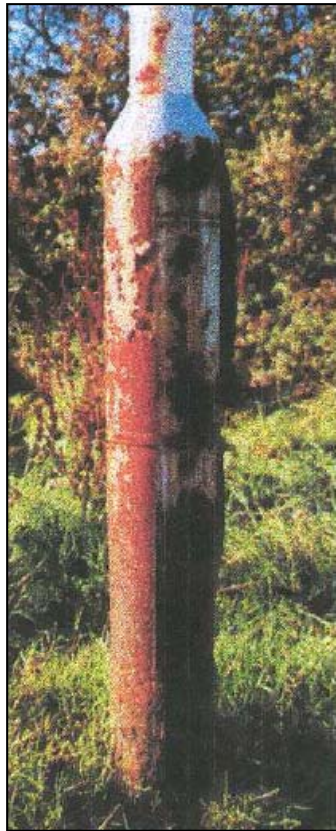
A white street lamp is positioned on the left side of a dark blue background. A light blue cone of light emanates from the lamp's head, extending downwards and to the right. The word "Background" is written in white, bold, sans-serif font across the middle of the light blue cone.

Background

Clearly better from any angle

ALC

Corrosion free



Clearly better from any angle

A white spotlight icon with a blue beam of light, positioned to the left of the title.

Background

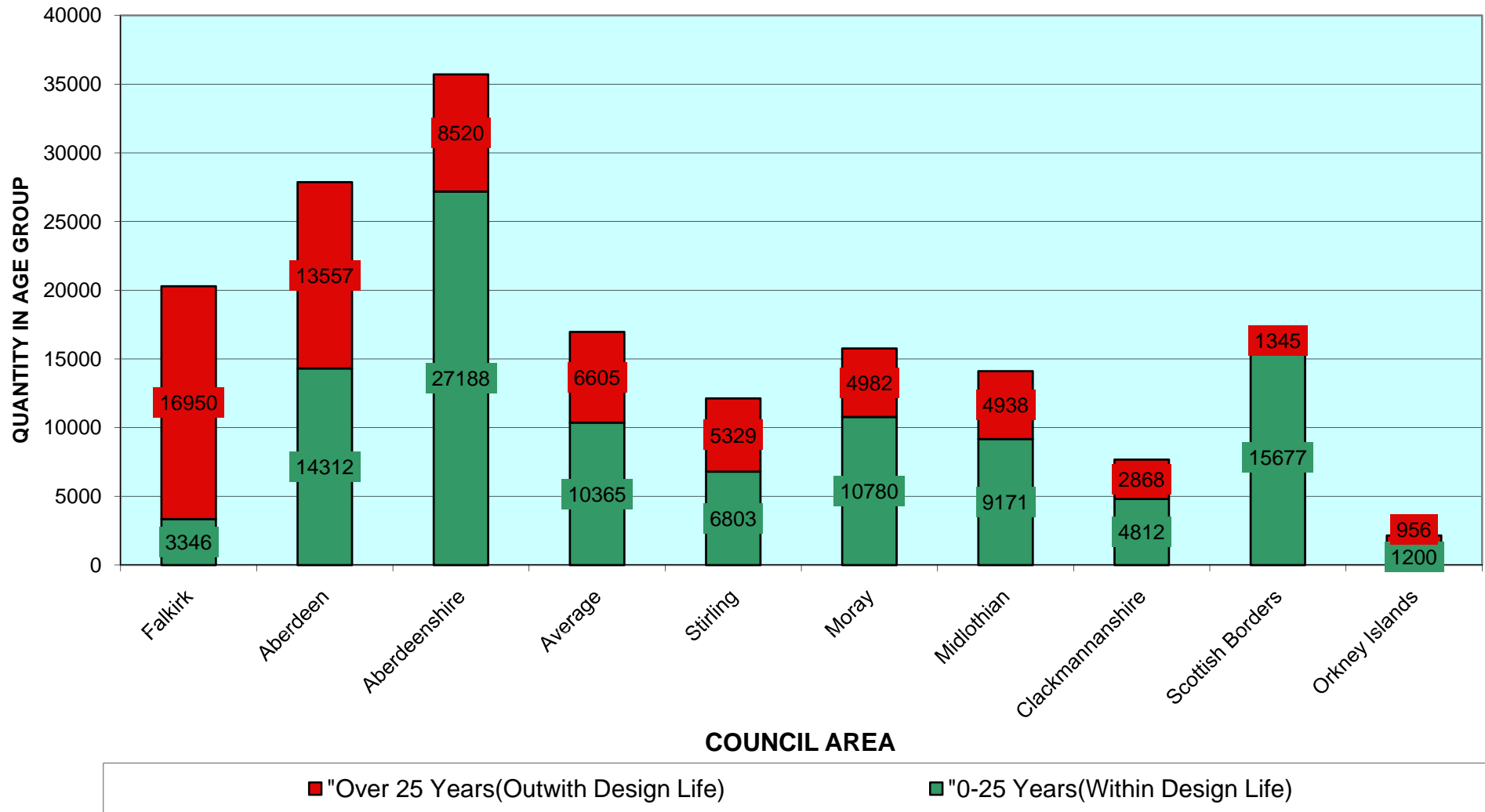
- **Column population**
- **Statutory performance indicator**
- **Immediate action**
- **Financial situation**

Clearly better from any angle

ALC

Background

SCOTTISH AUTHORITIES - LIGHTING COLUMN AGE PROFILES



Clearly better from any angle



A white spotlight icon with a blue beam of light, positioned to the left of the title.

Background

- **Column population**
- **Statutory performance indicator**
- **Immediate action**
- **Financial situation**

Clearly better from any angle

ALC

A white street lamp is positioned on the left side of a dark blue background. A light blue cone of light emanates from the lamp's head, spreading outwards. The word "Proposal" is written in white, bold, sans-serif font in the center of the light blue cone.

Proposal

Clearly better from any angle

ALC

A white spotlight icon with a blue glow, positioned to the left of the word 'Proposal'.

Proposal

- **Options**
- **Equipment evaluation**
- **Business case**
- **Funding options**

Clearly better from any angle

ALC

A white spotlight icon with a blue glow, positioned to the left of the word 'Proposal'.

Proposal

- Experience
- Right people
- Process & Systems
- Nedal

Clearly better from any angle

ALC

A graphic of a spotlight beam shining down on the word 'Proposal'.

Proposal

- **Options**
- **Equipment evaluation**
- **Business case**
- **Funding options**

Clearly better from any angle

ALC



Implementation

Clearly better from any angle

ALC

A white spotlight icon with a blue glow, positioned to the left of the title.

Implementation

- **Tender**
- **Planned replacement program**
- **Issues**

Clearly better from any angle

ALC



Benefits

Clearly better from any angle

ALC

A graphic of a spotlight beam shining down on the word 'Benefits'.

Benefits

- **Whole life costs**
- **Minimal maintenance**
- **Extended life**
- **Environmental**
- **Disruption**
- **Passive safety**

Clearly better from any angle

ALC

ALUMINIUM LIGHTING COLUMNS

8 Metre

COLUMN REPLACEMENT COMPARISON WITH STEEL (WHOLE OF LIFE COSTS OVER A 50 YEAR CYCLE)

Based on industry standard design life of 25 years for steel columns

ITEM	DESCRIPTION	STEEL COLUMN			ALUMINIUM COLUMN		
		RATE	No. EVENTS (50 year cycle)	TOTAL COST (50 year cycle)	RATE	No. EVENTS (50 year cycle)	TOTAL COST (50 year cycle)
	CAPITAL INSTALLATION COSTS						
1	Supply lighting column	£190.00	2	£380.00	£325.00	1	£325.00
2	Erect lighting column	£135.00	2	£270.00	£135.00	1	£135.00
3	Connection costs (Jointing Work)	£250.00	2	£500.00	£250.00	1	£250.00
4	Supply Lantern (25 year life)	£130.00	2	£260.00	£130.00	2	£260.00
5	Remove old column to tip/scrap	£130.00	2	£260.00	£130.00	1	£130.00
6	Fit and wire lantern	£30.00	2	£60.00	£30.00	2	£60.00
7	Joint pit	£140.00	2	£280.00	£140.00	1	£140.00
8	Reinstatement (Bitmac Footway 1.5m ²)	£75.00	2	£150.00	£75.00	1	£75.00
	TOTAL CAPITAL COSTS			£2,160.00			£1,375.00
	ROUTINE MAINTENANCE COSTS						
1	Cleaning & Lamp Change (3 Year Cycle)	£25.00	17	£425.00	£25.00	17	£425.00
2	Electrical Testing (5 Year Cycle)	£26.00	10	£260.00	£26.00	10	£260.00
3	Structural Testing (5 Year Cycle)	£25.00	10	£250.00	£0.00	0	£0.00
4	Column Repainting (7 Year Cycle)	£60.00	7	£420.00	£0.00	0	£0.00
	TOTAL MAINTENANCE COSTS			£1,355.00			£685.00
	TOTAL 50 YEAR COSTS			£3,515.00			£2,060.00
	SAVING (Steel - Aluminium Costs)						£1,455.00
	EQUIVALENT ANNUAL SAVING						£29.10
	ADDITIONAL CAPITAL COST OF COLUMN						£135.00
	PAY BACK PERIOD IN YEARS (Extra capital/Annual Savings)						4.64

A graphic of a spotlight beam shining down on the word 'Benefits'.

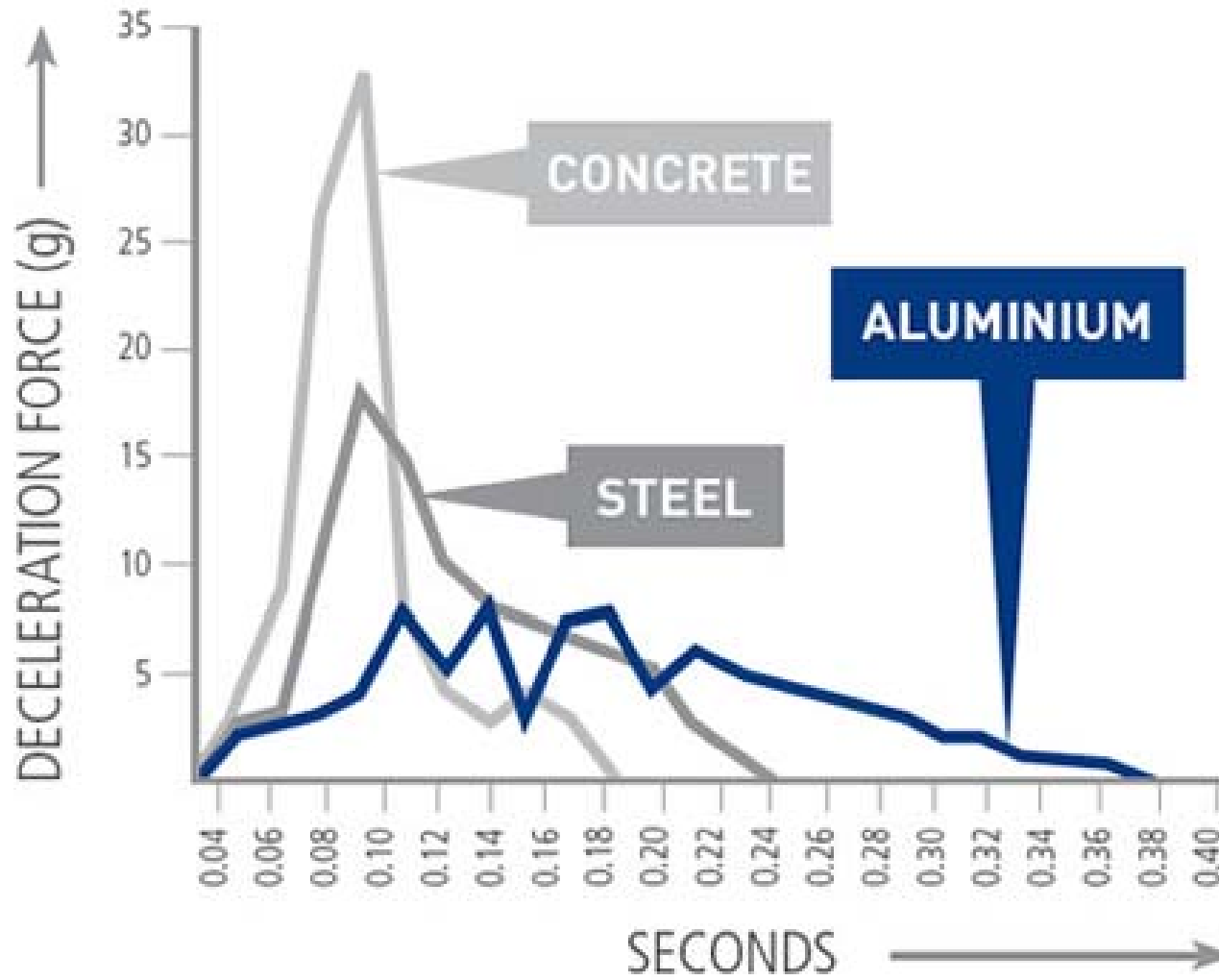
Benefits

- **Whole life costs**
- **Minimal maintenance**
- **Extended life**
- **Environmental**
- **Disruption**
- **Passive safety**

Clearly better from any angle

ALC

Benefits



Clearly better from any angle

Benefits

Passive safety



www.aluminium-lighting.com/downloads/eccertificatEOFconformity.pdf

Clearly better from any angle

ALC



Current situation

Clearly better from any angle

ALC



Current situation

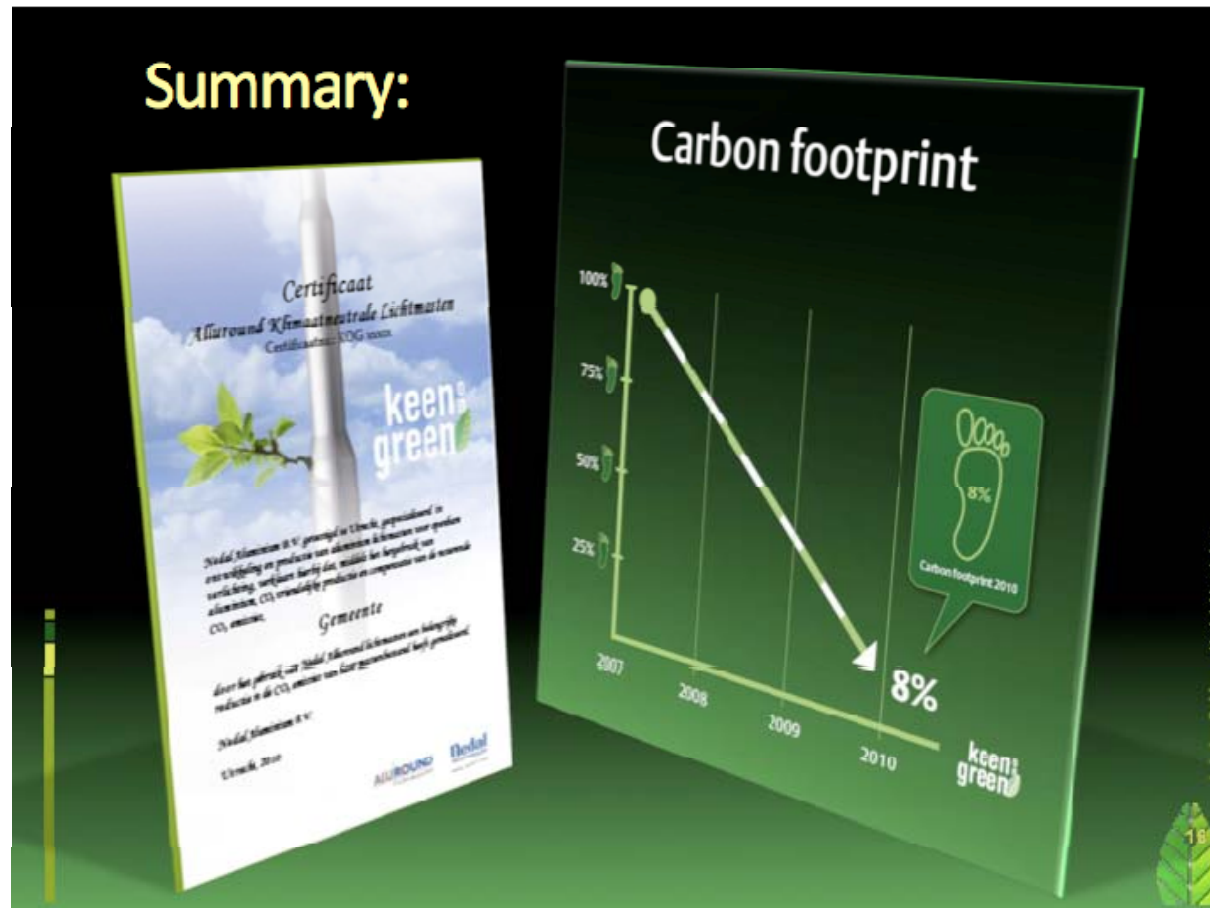
- **Column profile**
- **Specification**
- **Product improvement**
- **Peers**

Clearly better from any angle

ALC

Current situation

Green



Clearly better from any angle

A white spotlight icon with a blue beam of light, positioned to the left of the title.

Current situation

- **Column profile**
- **Specification**
- **Product improvement**
- **Peers**

Clearly better from any angle

ALC

Thank you

Questions ?

Aluminium Lighting Company Limited

Croeserw Industrial Estate, Eastern Avenue, Cymmer, Port Talbot SA13 3PB

T: 01639 852502 | F: 01639 852263 | E: sales@alulight.co.uk

Clearly better from any angle

ALC