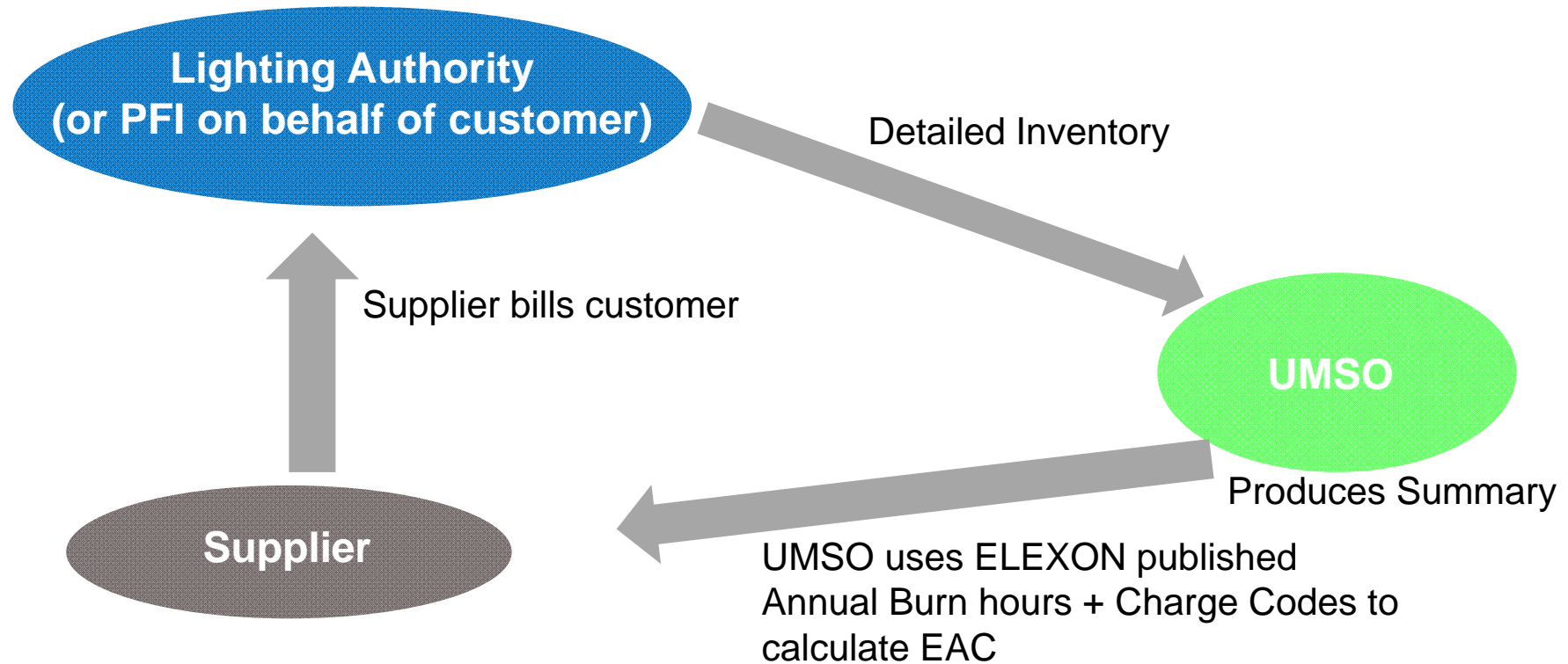


# What will be covered?

- ▶ Introduction to Power Data Associates
- ▶ Non Half Hourly and Half Hourly Explained
- ▶ Savings from DUoS
- ▶ Carbon Reduction Commitment
- ▶ Central Management Systems
- ▶ Questions



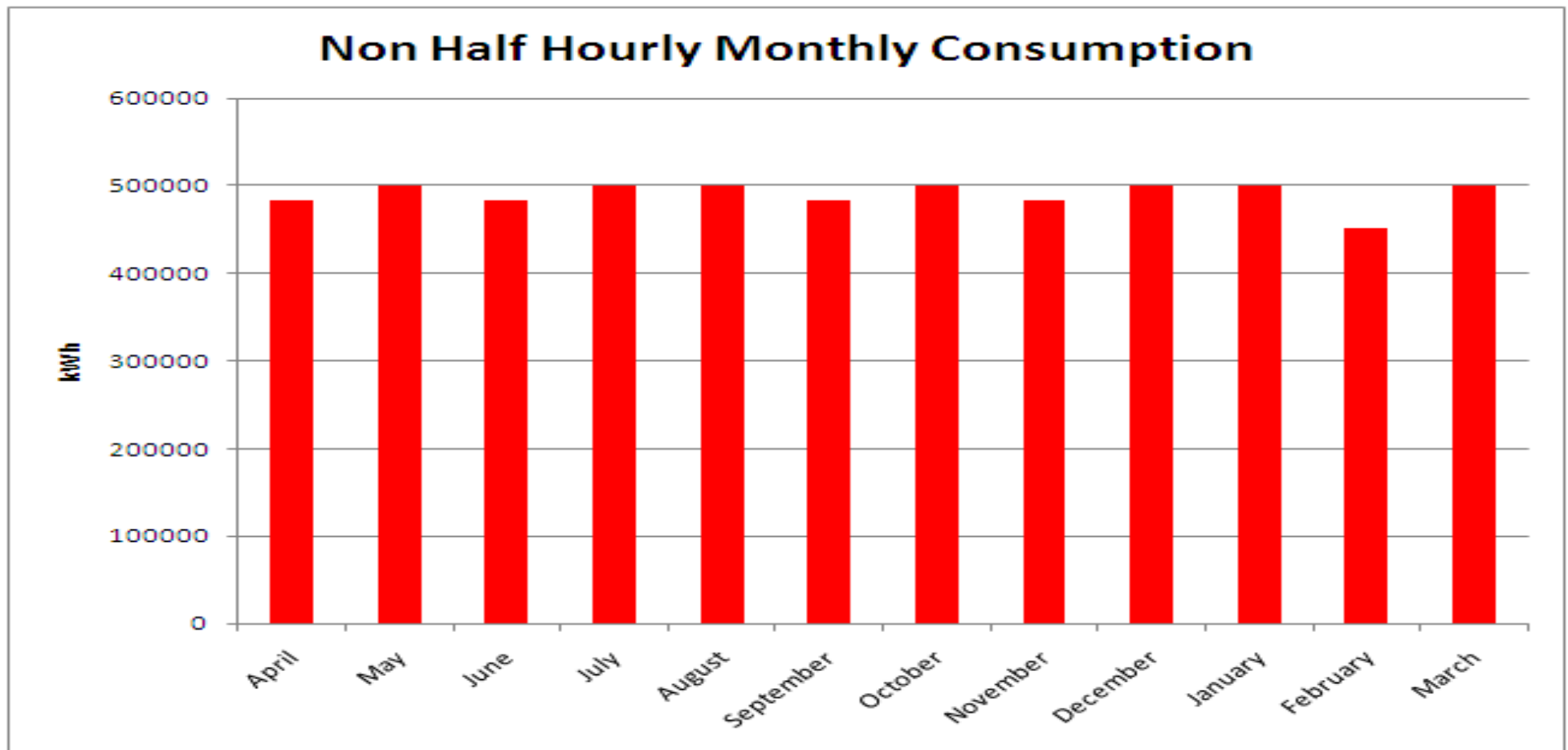
# Non Half Hourly Trading



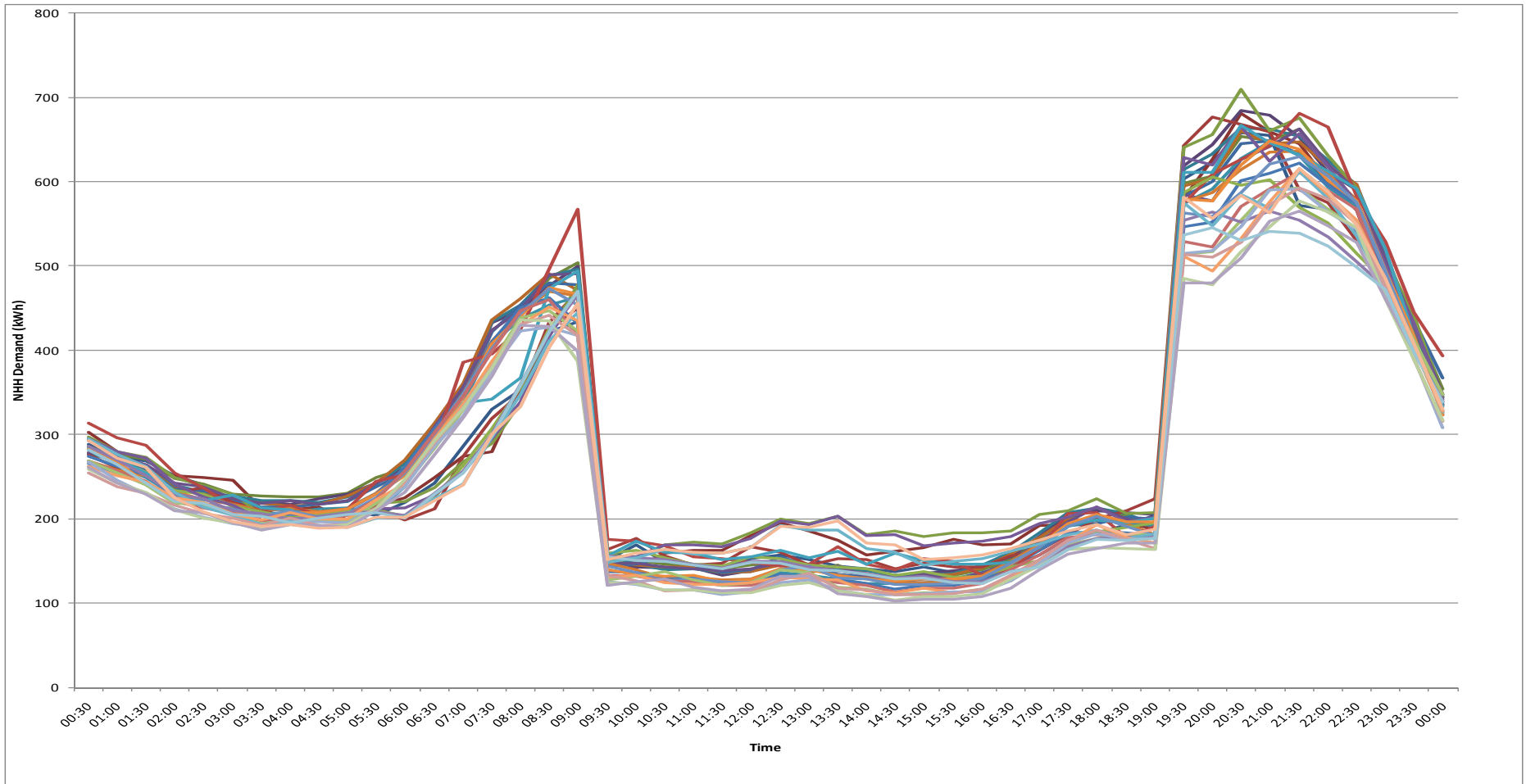
$$\text{Estimated Annual Consumption (EAC)} = \frac{\text{Circuit Watts} \times \text{Annual Hours} \times \text{No. Items}}{1,000} = \text{kWh}$$

# NHH Billing

- ▶ NHH trading results in the EAC being divided by 365, then multiplied by the number of days in each month
- ▶ kWh figure only changes when a revised inventory is submitted

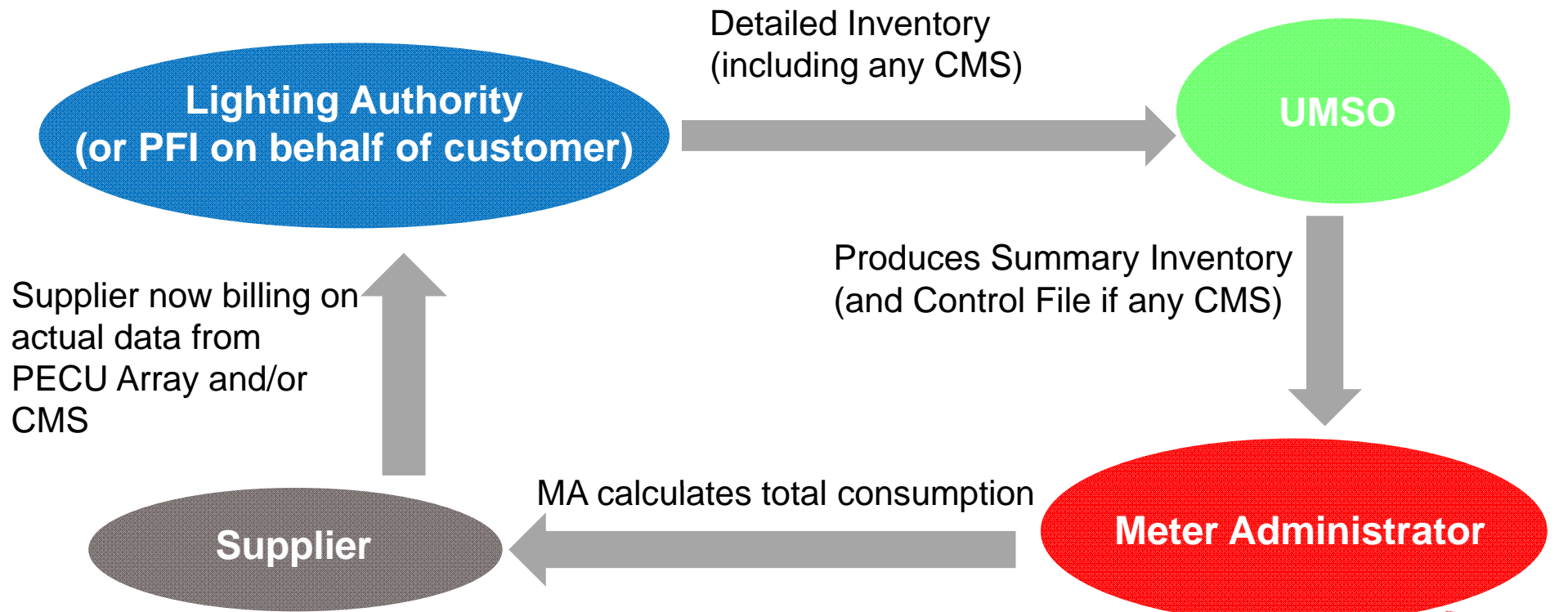


# NHH Profile



Non Half Hourly Profile for a Dusk to Dawn Regime

# Dynamic Half Hourly Trading



Any ELEXON Approved CMS



PECU Array



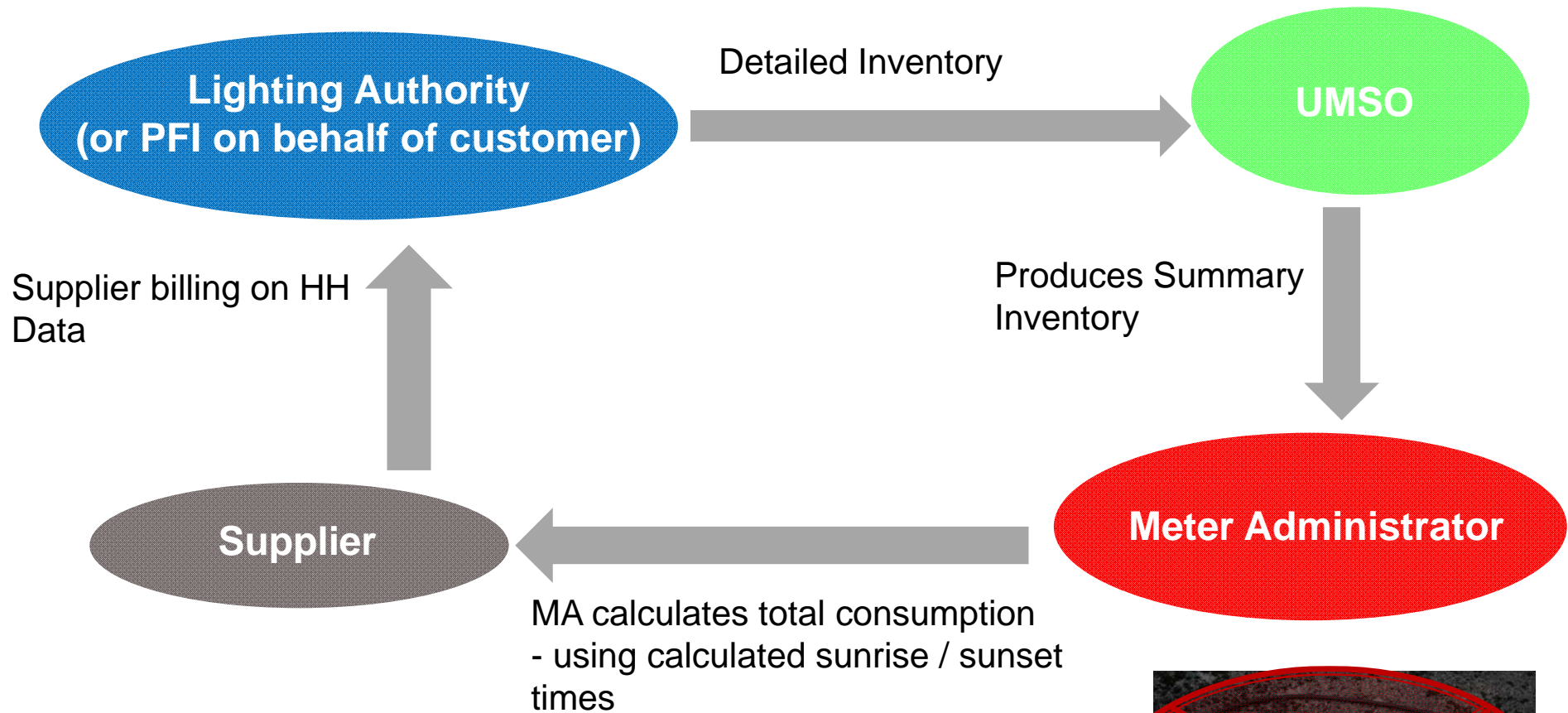


# PECU Array

- ▶ Locating your PECU Array:
  - Should be on the authority's property on a one or two storey (flat) roof
  - Convenient / easy / safe access for authority
  - Requires a power line
  - Option of GSM (mobile sim card) or standard phone line
  
- ▶ Cost of the Array:
  - Will cost around £4,000 (more for GSM option)

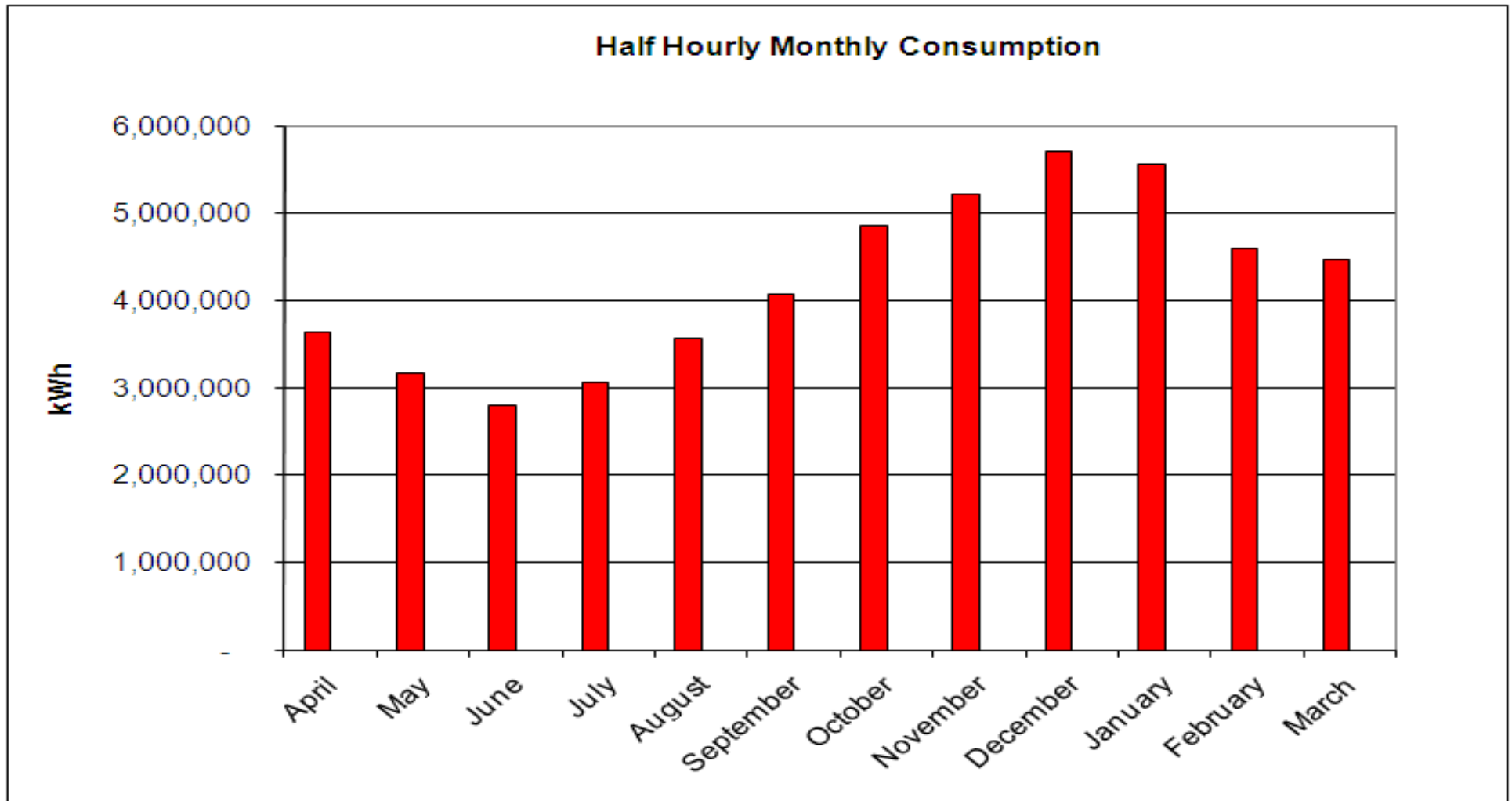


# Passive Half Hourly Trading

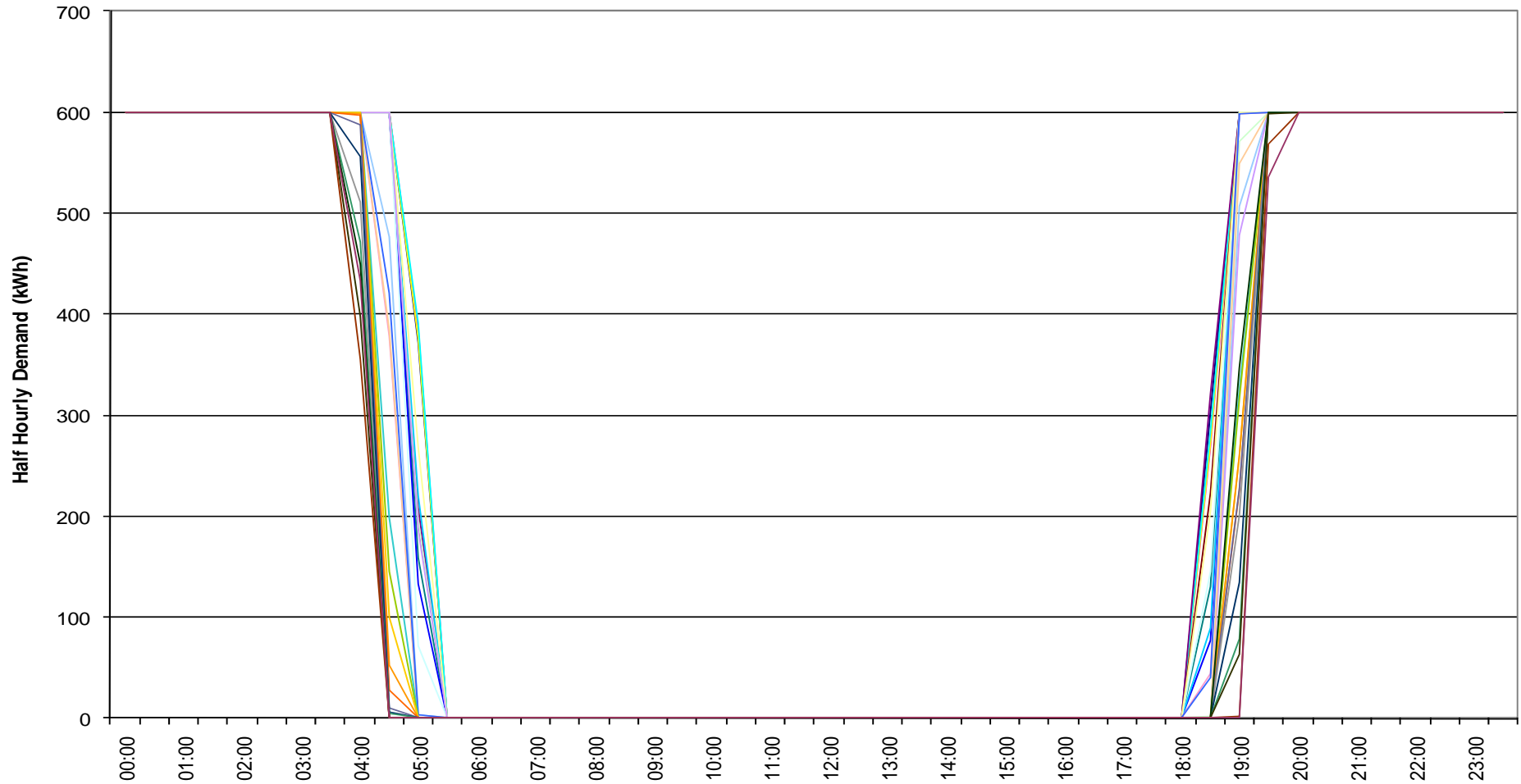


# HH Monthly Billing

- ▶ HH trading reflects your energy usage accurately each month, lower consumption in summer and higher consumption in winter



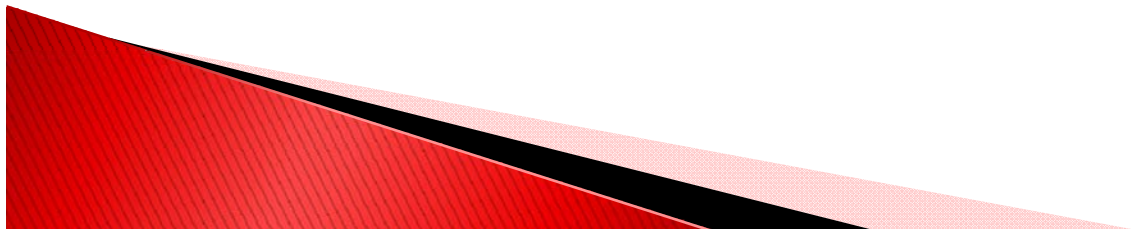
# HH Profile



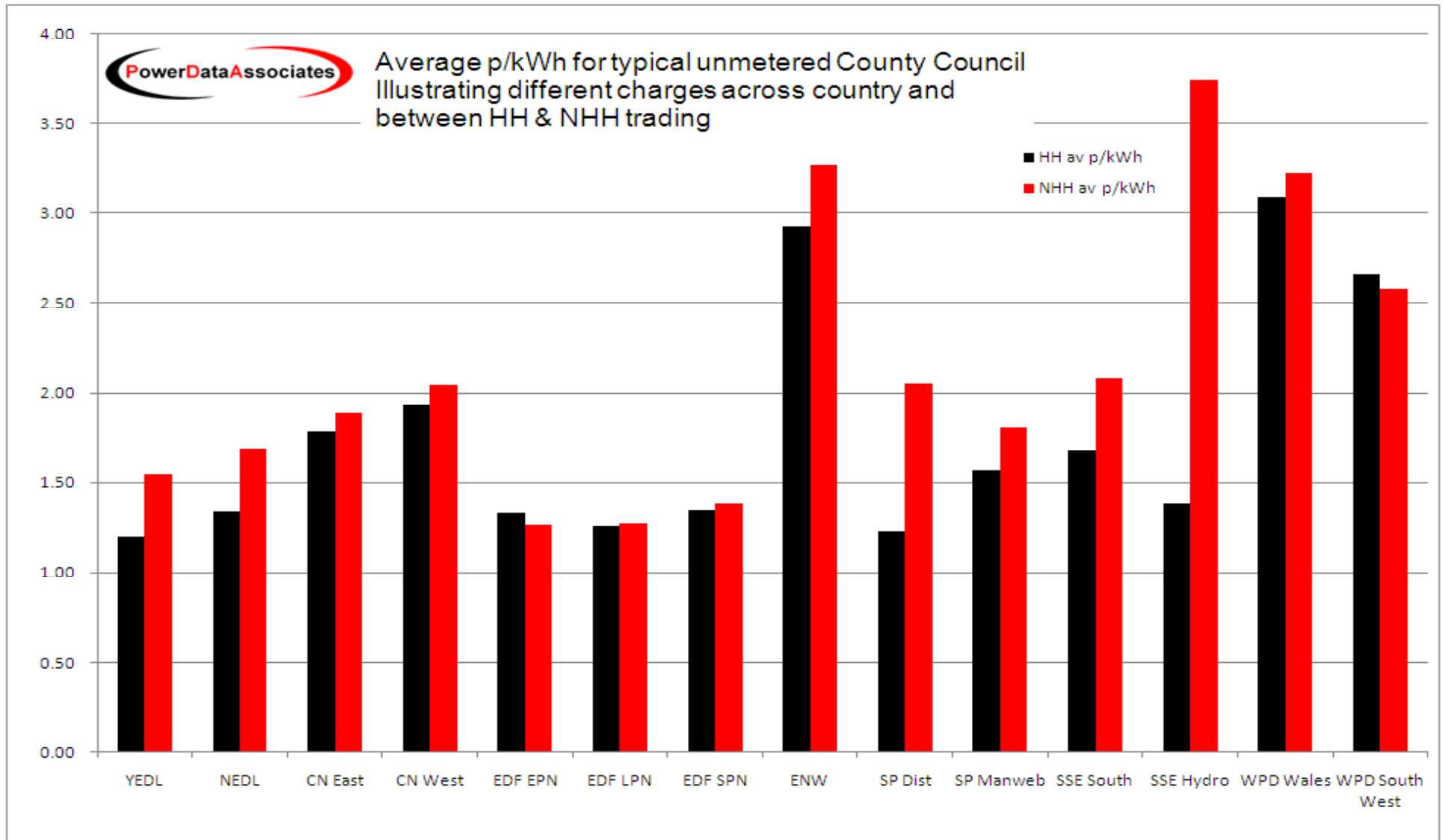
Half Hourly Profile for a Dusk to Dawn Regime

# Distribution Use of System (DUoS)

- ▶ Currently there are differences around the country in DUoS charges
- ▶ These are the charges Distribution Businesses pass on to the Suppliers
- ▶ 1<sup>st</sup> April 2010 first year of new system as a result of the Common Distribution Charging Methodology (CDCM) group
- ▶ Resulted in some big changes to DUoS charges
- ▶ Potential savings from Half Hourly trading



# Potential Savings for 1<sup>st</sup> April 2010 to 31<sup>st</sup> March 2011



# CRC Energy Efficiency Changes

- ▶ On the 25<sup>th</sup> January 2010 DECC published a last minute addendum
- ▶ Removed Non Half Hourly and Passive Half Hourly from the scope of the CRCEE
- ▶ Creates differences in authority's emissions depending whether street lighting is Dynamic, Passive or Non Half Hourly
- ▶ Early Action AMR Metric still exists for Dynamic Half Hourly

# CRCEE Way Forward

- ▶ Power Data Associates with industry input have produced a document and submitted it to DECC
- ▶ It seeks to review the CRCEE with respect to the treatment of Unmetered Supplies
- ▶ UKLB has also submitted a document seeking equal treatment of all Unmetered Supplies
- ▶ Will allow for fair and equal comparisons between all local authorities
- ▶ Any changes unlikely to come into effect from 1<sup>st</sup> April 2011 now

# Central Management Systems

ELEXON Approved Systems  
(correct as of 21/09/2010)

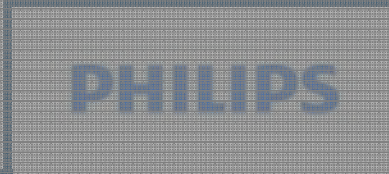


At various stages of  
ELEXON Approval



# Current Live CMS

ELEXON Approved Systems  
(correct as of 03/09/2010)



# ▶ Any Questions ?

**James Everley**

Account Manager

01525 862 990

07540 52 88 44

[James.Everley@PowerDataAssociates.com](mailto:James.Everley@PowerDataAssociates.com)

[www.PowerDataAssociates.com](http://www.PowerDataAssociates.com)

Wrest Park, Silsoe, Bedfordshire MK45 4HR



Wrest Park

