

# Roads and Transportation Service

---



## WINTER SERVICE REVIEW PREPARATION FOR THE FUTURE

23 SEPTEMBER 2010

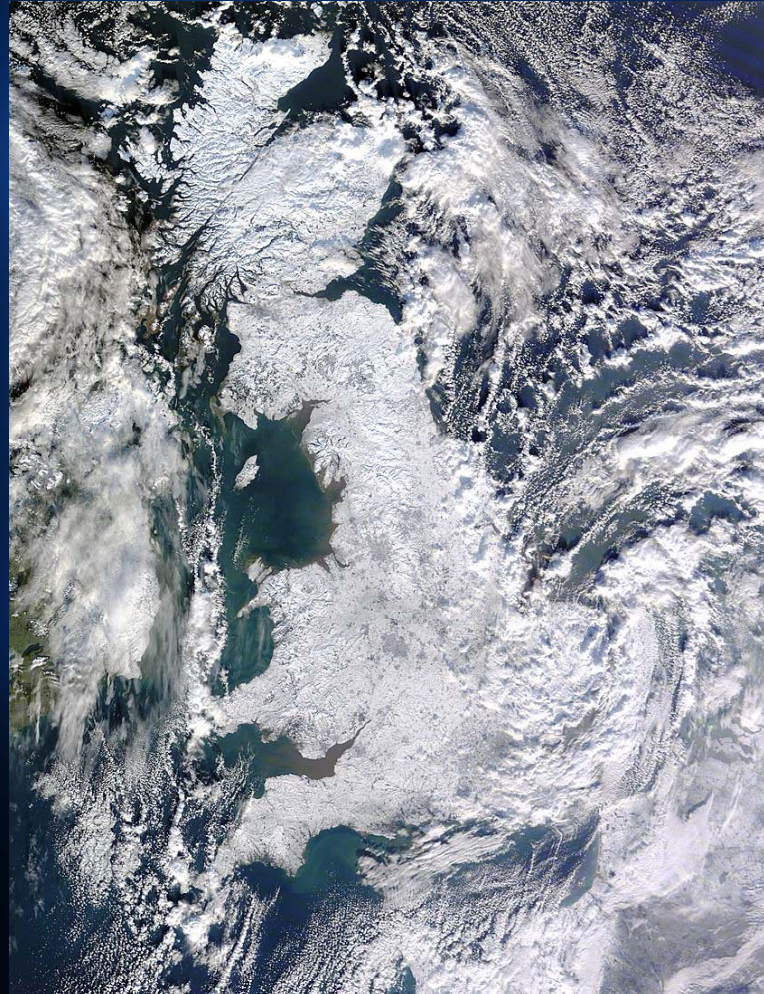
# Roads and Transportation Service Winter Service Review

---



- Drivers for the Winter Service Review
- Winter Service Plan
- Carriageway Gritting Routes
- Footway Gritting Routes
- Grit Bins
- Salt Stocks
- Communications and Community Resilience

# Roads and Transportation Service Winter Service Review



# Roads and Transportation Service Drivers for Winter Service Review



- December 2009 - Nights below zero = 24,  
Nights above +2°C = 2
- January 2010 - Nights below zero = 28,  
Nights above +2°C = 0
- Salt Used

2006/07	3231 tonnes
2007/08	8133 tonnes
2008/09	12121 tonnes
2009/10	13743 tonnes

# Roads and Transportation Service Drivers for Winter Service Review



- Severe Winters of 2008/09 and 2009/10
- Governance & Scrutiny Committee Reports on Winter Response Arrangements and associated Action Plans
- Revised Guidance in 'Well Maintained Highways' the Code of Practice for Highway Maintenance
- Detailed review of Winter Service Plan and gritting routes not undertaken for a number of years.

# Roads and Transportation Service Winter Service Plan

---



- Statement of Policies and Responsibilities
- Quality
- Route Planning for Carriageways and Footways
- Weather Prediction and Information
- Organisational Arrangements and Personnel
- Plant Vehicles and Equipment
- Salting and De-icing Materials
- Operational Communications
- Information and Publicity



# Roads and Transportation Service Carriageway Gritting Routes

Winter Service operates from two depots, Gauchalland at Galston covering the north domain and Underwood at Cumnock covering the south domain.

Previously 15 precautionary routes covering the whole area (over 50% of network)

No formal post salting treatment routes.

Paper based route plans, limited efficiency details available.



# Roads and Transportation Service Carriageway Gritting Routes

---

Three priorities of routes developed, with trigger levels set for each priority.

Priorities based on carriageway hierarchy and wider transport and other policy priorities

Routes have now been digitised and overlain on GIS

Detailed route cards and plans available

Gritted lengths, 'dead' lengths, tonnages of salt required now available for all routes and electronically held.

# Roads and Transportation Service Carriageway Gritting Routes



- **Priority 1 Routes – 41% - 12 routes**  
Precautionary treatment as appropriate on receipt of an adverse forecast
- **Priority 2 Routes – 8% - 4 routes**  
Post salting treatment, if adverse conditions forecast to last beyond midday, treated during the working day
- **Priority 3 Routes – 35% - 12 routes**  
Post salting treatment if adverse conditions forecast over a prolonged period, treated during the working day
- **Minimum Winter Network (Snow Routes) – 6 Routes**

# Roads and Transportation Service Footway Gritting Routes

---



Previously no precautionary gritting of footways was undertaken

Post salting undertaken primarily by Outdoor Amenities on receipt of instruction from Roads, either by hand or using limited number of footway gritters.

Largest number of complaints due to perceived lack of footway treatment

Priority footways now developed based on recommendations in revised 'Well Maintained Highways'



# Roads and Transportation Service Footway Gritting Routes

Priorities based on footway hierarchy and wider pedestrian and other policy priorities

- **Priority 1 Footway Routes – 142km**  
Precautionary treatment as appropriate on receipt of an forecast of ice or snow with temperatures below zero for the next 24 hours
- **Priority 2 Footway Routes - 56 Km**  
Post salting treatment, if adverse conditions forecast over a prolonged period, treated during the working day



# Roads and Transportation Service Footway Gritting Routes

---



Investigating other methods of treatment

Brine sprayers mounted on quad bikes could allow substantial lengths of the Priority 1 network to be treated before 8.00am

Council already has a number of footway gritters available which will also be utilised.



# Roads and Transportation Service Grit Bins

- Revised policy developed to ensure a consistent approach to locating grit bins
- Clear guidance and request form
- Requests to be made through Community Councils or Elected Members
- Community grit bins to encourage resilience
- Replenished on a monthly basis



# Roads and Transportation Service Salt Stocks



- 8000t stock level at start of winter
- Minimum stock levels based on resilience
- Salt conservation for contingency planning

Trigger level 2400 tonnes (6 days resilience)

Minimum Winter Network

Salt / Grit mixes

No filling of grit bins until stocks levels re-established,  
recommencing with filling of Community Grit Bins

# Roads and Transportation Service

## Salt Stocks

---



- Salt ordered when levels fall to 3000 tonnes (increased to 5500 tonnes in December and January)
- Minimum level set at 4800 tonnes prior to entering the Christmas period, but target to refill domes prior to Christmas period.
- Levels Monitored Daily via IceMan
- Gives detailed information on salt usage down to individual routes and provides real time decision making information.

# Roads and Transportation Service Communications and Community Resilience



- Winter service plan and gritting routes available on Council web site
- Winter Service Plan and gritting routes distributed to Elected members, Community Planning Partners and Community Councils
- New winter leaflet including information on community resilience
- Presentation to Community Planning Partners and Community Councils

# Roads and Transportation Service Communications and Community Resilience



- Lunchtime treatment decision on Council web site
- Pre-winter publicity on new Winter Service plan and gritting routes and to encourage community resilience
- Community Grit bins to encourage Community Resilience

# Roads and Transportation Service Summary

---



- New Winter Service Plan prepared.
- Carriageway and Footway Routes reviewed.
- Revised Grit Bin policy including community grit bins
- Increased Salt Stocks
- Improved Communications and Community Resilience
- Winter Service Improvement Plan - all actions either completed or good progress

# Roads and Transportation Service



## Questions

