



**Mo Baines**

**principal advisor**

**The Ensuring Council:**

**Is neighbourhood working a  
panacea?**

# How far have neighbourhoods evolved?



- Neighbourhoods have moved towards service shaping
- Do they also 'bend' towards mainstream delivery strategies?
- Clear focus on the delivery of community safety
- Clear focus on delivery of environmental services
- Rationale of service improvement; *'it is not about creating 'mini-town halls', but about bending the delivery of mainstream services'*



# Site for policy coordination and partnership working?

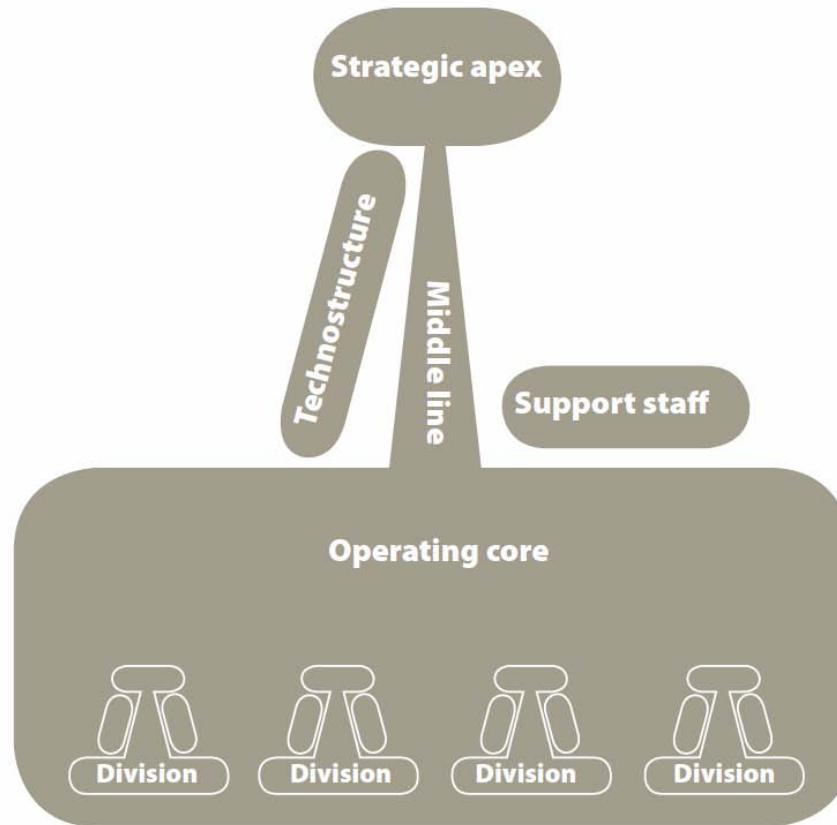


- Yes!
- More efficient joined-up working by partners, better identification of needs and improved capacity for flexible responses
- 'Delivery-arm' of the LSP or the LAA: mini-partnerships and partnership strategy of place-shaping
- Production of public value: a site for constant process of determining, responding and verifying the collective preferences of citizens

# The decentralised divisional authority



The Decentralised Divisional Authority



# Decentralised divisional authorities



- Constrained decentralisation - semi-autonomous neighbourhood divisions, under central administration
- Control is not decentralised down to neighbourhoods; limited delegation and budgets, and neighbourhood itself potentially operating in highly centralised ways.
- May formulate the strategies for neighbourhoods, but 'headquarters' retains control over the strategic portfolio and financial resources, designs the performance system and provides support services common to all neighbourhoods

# Towards an Ensuring Council



- Tensions between particularistic logic of neighbourhoods and universal/collective logic of place-shaping and local government?
- Giddens and call for moves towards the creation of an 'ensuring state'
- Political convergence: responsibility to ensure policy coordination across all areas of policy and practices – what we might term strategic place-shaping
- Economic convergence: responsibility to ensure that economic initiatives which maintain economic competitiveness do 'join up' with what we might term the social and economic well-being of communities

# Ensuring authority and neighbourhoods



## Key findings?

*Local government best placed to establish such social, economic and political settlements, which are grounded in democratic processes of representation and accountability*

*Maintain core capacity of local authorities to **determine and ensure** the delivery of strategic outcomes across their localities*

# Our research findings



**LOCAL SERVICES**

**LOCAL SOLUTIONS**



# Contact details

**Mo Baines, Principal Advisor**

**Email: [mbaines@apse.org.uk](mailto:mbaines@apse.org.uk)**

**Association for Public Service Excellence**

2nd floor Washbrook House, Lancastrian Office Centre, Talbot Road,  
Old Trafford, Manchester M32 0FP.

**telephone:** 0161 772 1810

**fax:** 0161 772 1811

**web:** [www.apse.org.uk](http://www.apse.org.uk)



INVESTOR IN PEOPLE



**GB 11409**



**GB 11132**



**GB 14074**