

Working in Neighbourhoods Nottingham City

Lianne Taylor



Nottingham
City Council

History and Work so Far

Strategy and Principles Agreed 20.11.2007

Building Blocks of Police Beats and then Wards established All Areas

Neighbourhood action Officer Role established

Neighbourhood Teams (Partnership Teams) established in all areas at Ward Level

Area Managers (all Partners established in all Areas)

Good Working Relationships

NATIONAL CONTEXT

“The new Bill will give every neighbourhood, city and region the opportunity to unlock the potential and the talent of its people. It will give local authorities more power and freedom to respond to local needs – and through stronger engagement and consultation with their communities they will be able to do this more effectively.”
Engaging Communities in Fighting Crime – Louise Casey Review - November 2008

Proposal 9: *Local authorities and police forces should consider establishing structures that ensure closer local working of Neighbourhood Policing, wider neighbourhood management and council services and other criminal justice services.*

Stronger Communities Bill – Hazel Blears, December 2008

The new Bill will give every neighbourhood, city and region the opportunity to unlock the potential and the talent of its people. It will give local authorities more power and freedom to respond to local needs – and through stronger engagement and consultation with their communities they will be able to do this more effectively.”



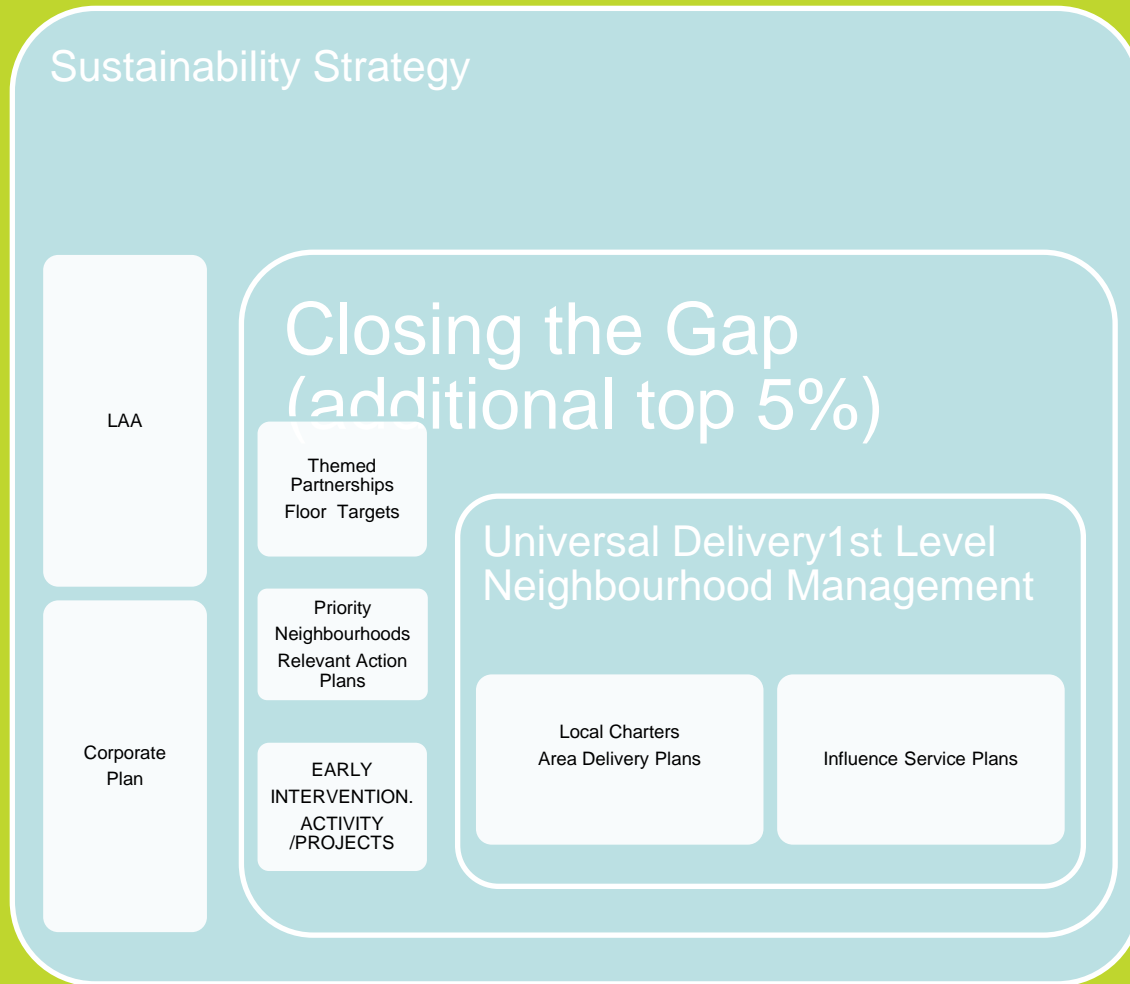
Moving Forward

Translation of Strategy to Operational Delivery Model. (**Aspley Pilot**)

Local Delivery Plans with Performance DATA. (inc Neighbourhood Transformation Plans)

Empowerment (both Communities and Front Line staff)

Connecting and Delivering



Deciding and Delivering

One
Nottingham

- Agree Sustainability Plan
- Exec Partners take to own Delivery(City Corporate Plan, PCT etc)

Themed
Boards

- Prioritise need for theme and LAA (Floor Target Action Priorities)
- Translate to Activity (Connect to Local Area Committee Delivery Plans) Identify Gaps in Delivery Mechanisms (Social Regen Top 5%)
- Strategic Regeneration Frameworks

9 Area Committees
With Vol Sector

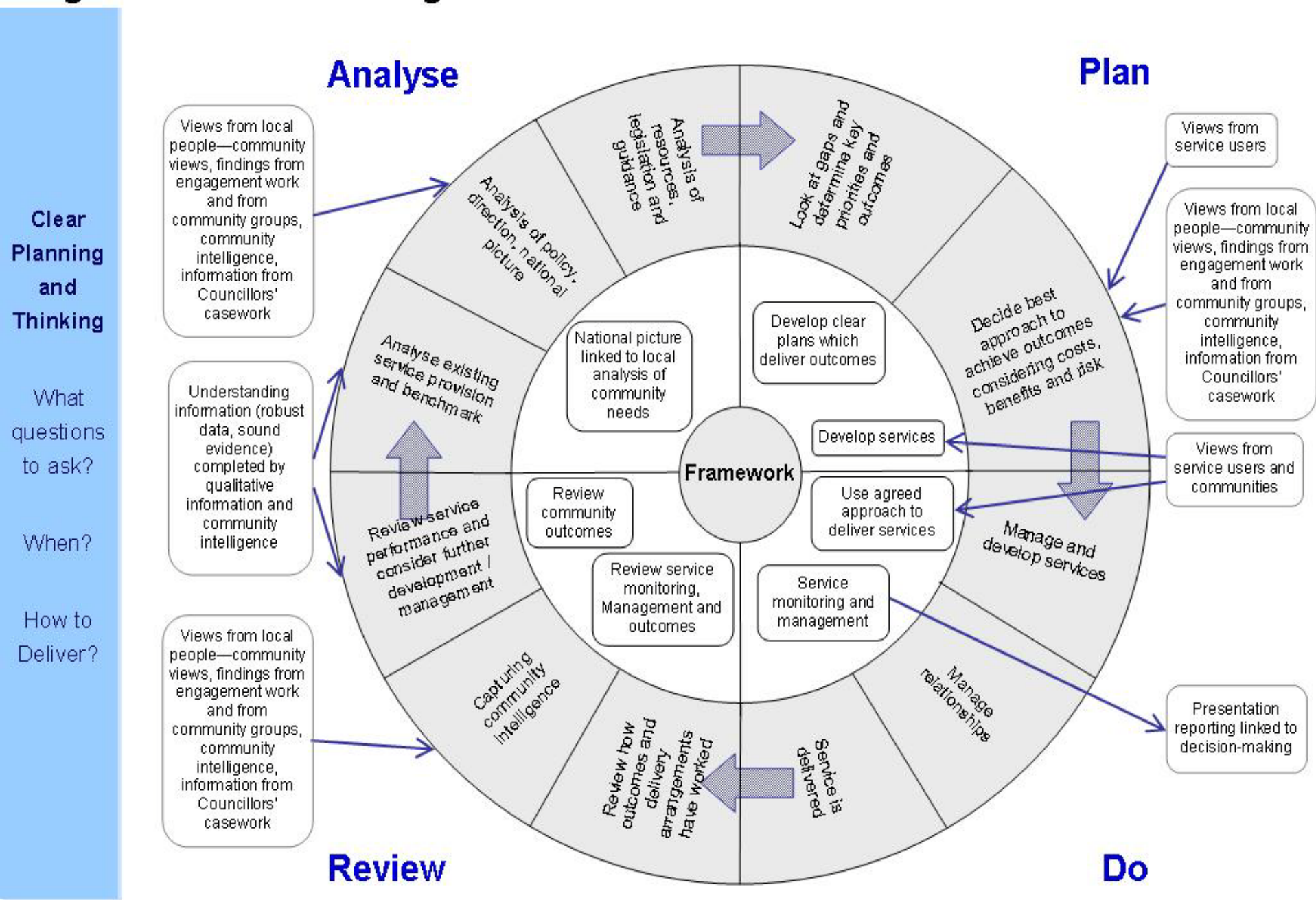
- Connect Communities Influence delivery(who what where when) Local Delivery Plans. Develop Partnership Neighbourhood Delivery Mechanisms. (Emphasis on capacity Quality)
- Support Framework Front Line delivery and Scrutiny, Impact Assess

EARLY
INTERVENTION



Nottingham
City Council

Neighbourhood Working Performance Framework



Delivering to Neighbourhoods/Customers

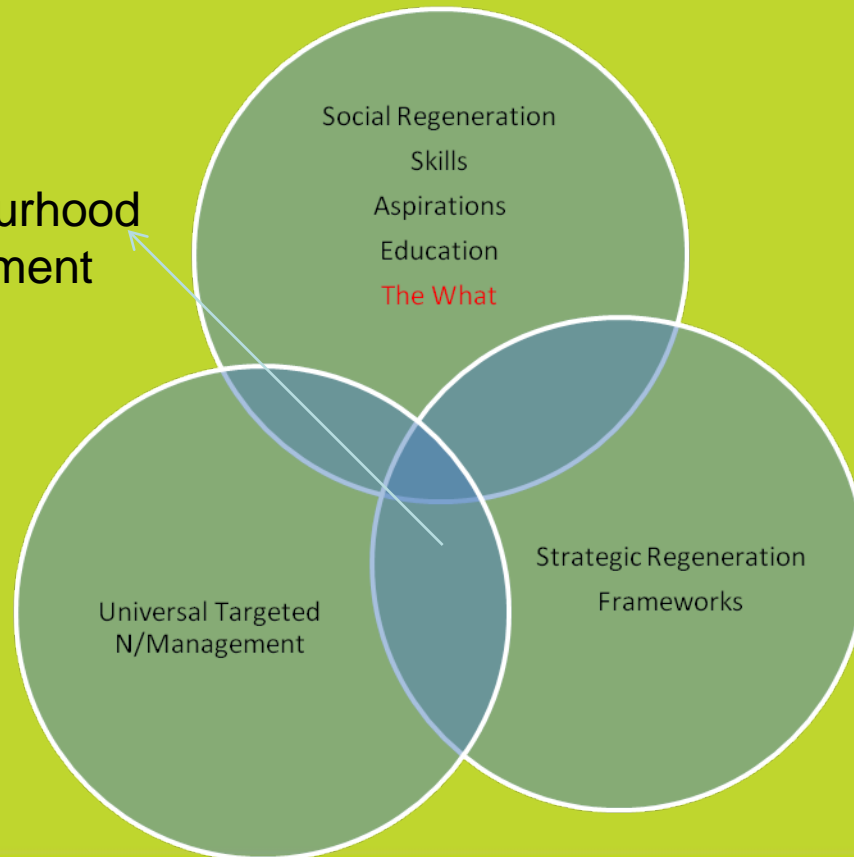
Good Example CDP Through to Neighbourhoods.



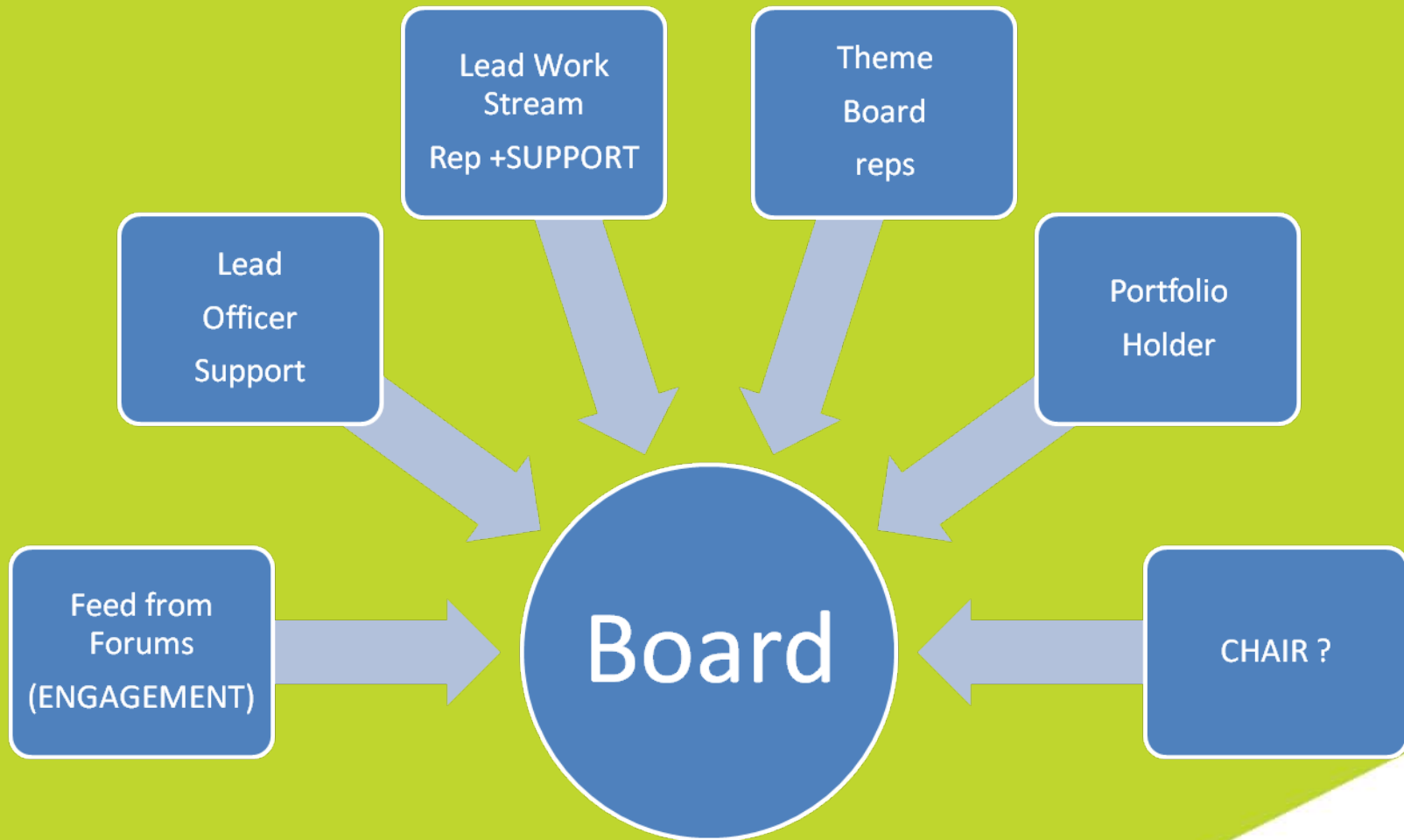
Delivery Partners NCH Street Scene Police Neighbourhood Management

The model needed should be influenced by Sustainability Strategy. The model for Neighbourhood Management/delivery mechanism in the top 5% can then be developed .

Neighbourhood Management Top 5%

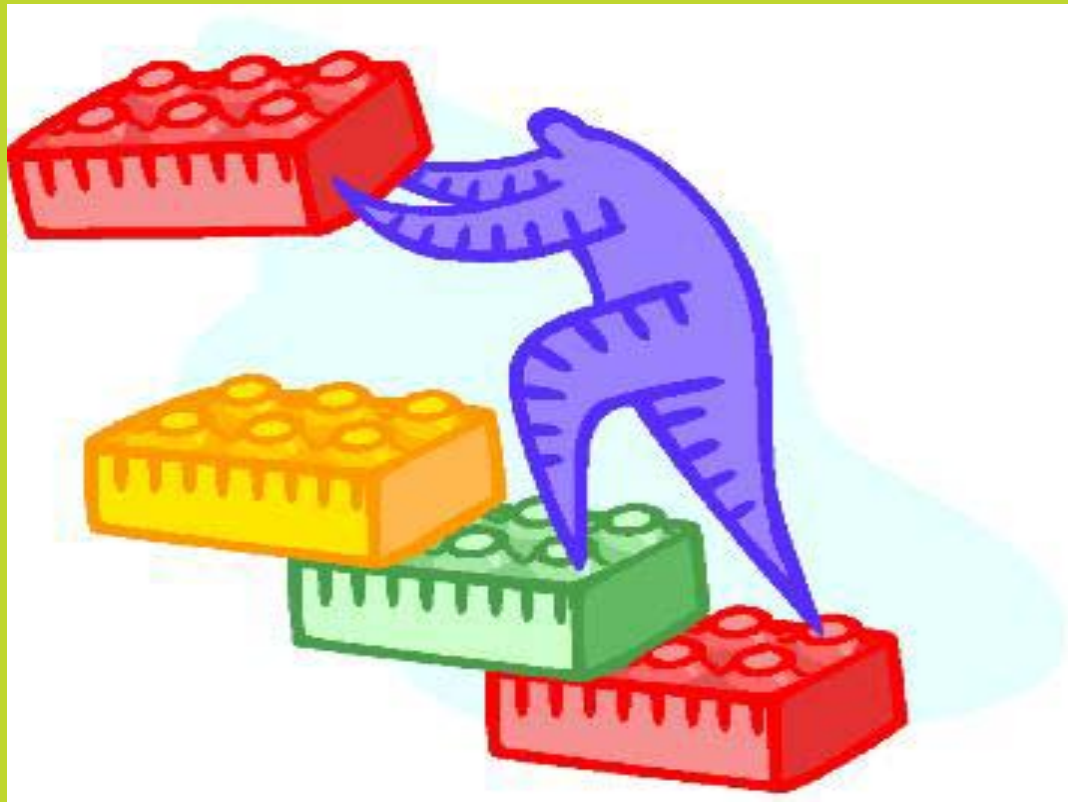


Nottingham Neighbourhoods



ESCALATION ROUTES

Communication



Next Steps

- Vital to have agreed operating working **boundaries**
- Agree develop **Escalation** routes
- Agree which **Priority** Neighbourhoods
- Scope what outcome for each neighbourhood and project Manage to deliver
- Agree what **service standards and scope what input to deliver**
- **New Roles** for Area Committees and Ward Focus.

More.....

Support and development for Elected Members as their role as Local Champions.

Review style and Role of Area Committees to support this work (**agreed**)

Develop Scrutiny role for Area Committees in Impact Assessing and managing the delivery of Local Plans both delivery and Neighbourhood Transformation Plans (As Overview and Scrutiny deliver for LAA (**agreed**))

Environmental campaigning

Nottingham's aim is to become the cleanest big city in England. To achieve this we need to encourage residents to change unacceptable behaviours (littering, fly tipping etc) and to play their part in making neighbourhoods cleaner in partnership with the Council.

To achieve this, coordinated campaigning activity is being organised that will:

- provide a consistent, year-long message, pulling together all campaigns and national events into a unified, bold campaign
- run monthly local campaigns based around 'Saturday Clear Outs'
- run a major summer-time campaign that is challenging, targeted to customer priorities and hard hitting
- run campaigns focused on customer priorities – dog fouling, littering (fast food waste, chewing gum and cigarette butts), graffiti and bins left on streets
- give people the opportunity to join an 'environmental watch' scheme to make a difference to their neighbourhood and receive priority service.

Improving local environments

To achieve a major improvement in cleanliness, Nottingham is developing a partnership approach that recognises that the public realm is an issue for all Council services, external agencies such as the Police and Nottingham City Homes, the third sector and individuals.

The Council is restructuring its cleansing services to give them a neighbourhood base and focus. Solutions can be tailored to local needs – flexibility to be encouraged. Local partners will develop more customer focused tasking and encourage pride in neighbourhoods as places to live.

Greater tenacity is being shown to increase enforcement activity, too. And those that are prosecuted face naming and shaming. Campaigns will highlight need to have pride in where you live and challenge unacceptable behaviours.