

Belfast City Council Recycling Including Food Waste Trial

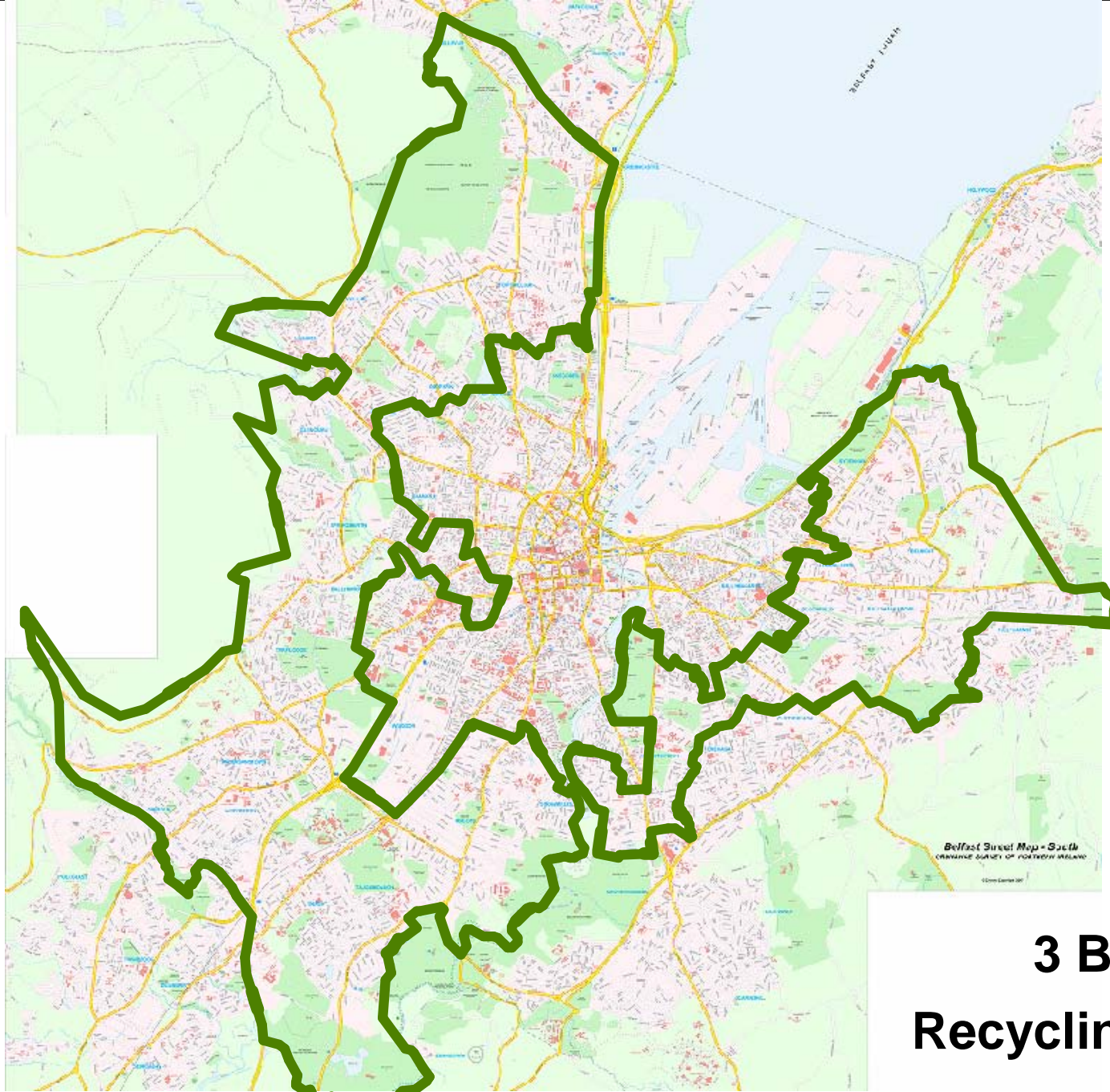
Terry Mitchell

Operations Manager, Waste
Collection & Recycling

APSE Performance Networks Seminar.

Thursday 3rd December 2009





**3 Bin
Recycling Area**

Start of Recycling

- Paper only – August 2003
- Dry Recyclable & Compostable waste – 2005->2006 fortnightly with Black Bins
- Black Box – 2006
- Food Waste Trial in Black Box Area – June 2008 with fortnightly Black Bin
- Food Waste Trial collected with Black Box and fortnightly Black Bin





OPERATIVES WORKING AT REAR

IT'S A BLUE BIN DAY

DENNIS

BELFAST RECYCLING CREW OF THE YEAR
2008/2010

22

FEZ 4832



Black Box Collection Vehicle



Food Waste Collection Vehicle



Black Box and Food Waste Collection Vehicle

Conclusions

- Proper communications will get results
 - Keep Councillors fully informed and get their support
 - Keep the Media informed
 - Keep the Public informed
 - Keep Staff informed and involved
- Education And Enforcement
- Quantities of materials can vary depending on area
- Still problems with Flats/Multiple Occupancy/Students



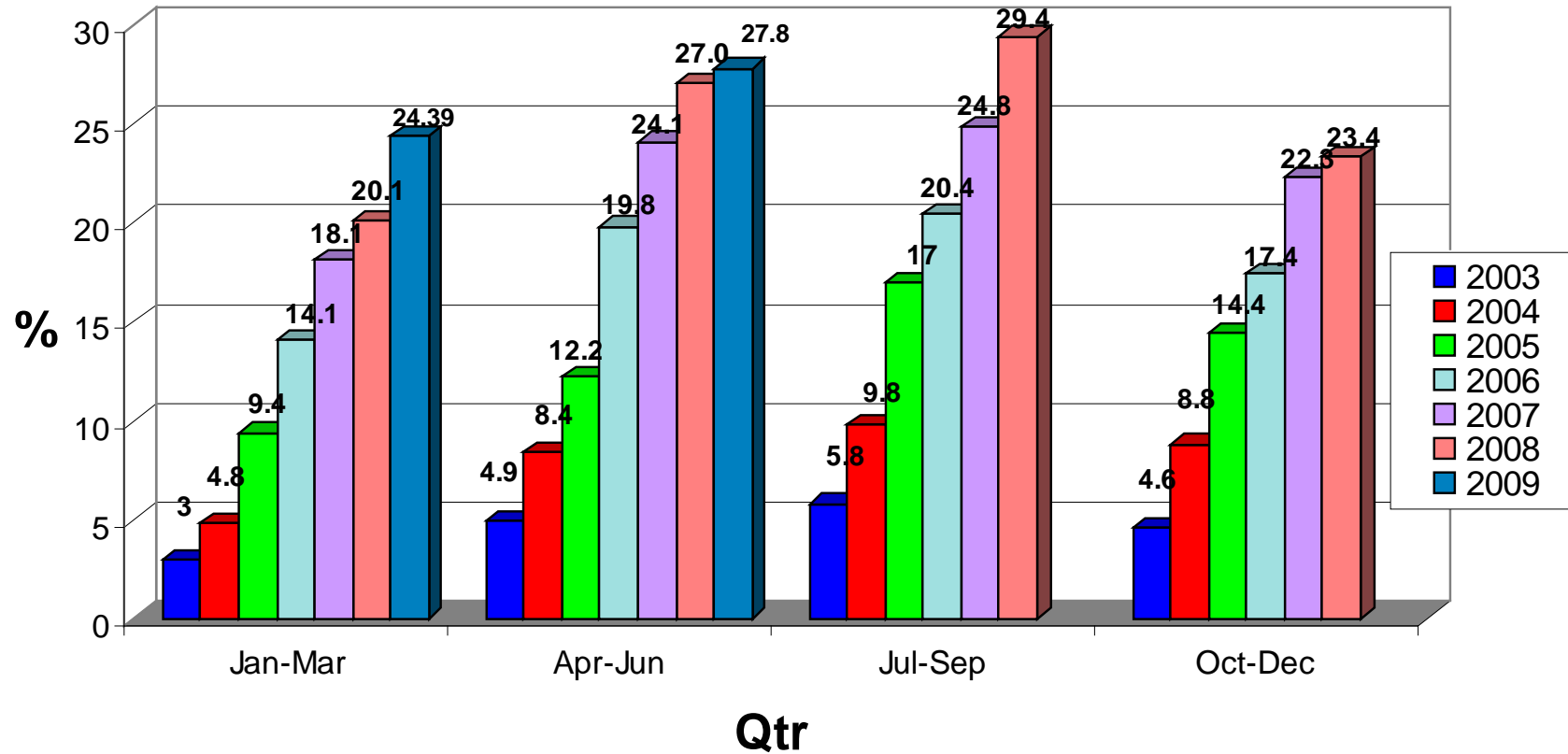
Recycling Scheme Tonnages		Tonnages			
		2006/07	2007/08	2008/09	2009/10 Est.
A	Blue Bin	9,980	10,900	10,300	9,500
	Tonnes per AW collection	384	419	396	365
	No. of households	70,000	70,000	70,000	70,000
	Avg kg per collection hh passed	5.48	5.99	5.66	5.22
	Est. participation = 65 - 70%				
		Tonnages			
		2006/07	2007/08	2008/09	2009/10 Est.
B	Black Box	2,084	3,589	3,814	3,500
	Tonnes per collection (weekly)	40	69	73	67
	No. of households	25,000	54,000	54,000	54,000
	Avg kg per collection hh passed	1.60	1.28	1.36	1.25
	Est. participation = 30-40%				
		Yr 1 July08-Jun09			
C	Food waste pilot	375			
	Tonnes per collection	7			
	No. of households	7,000			
	Avg kg per collection hh passed	1.03			
	Est. participation = 30%				

scheme increased to 50,000 hh in Jan/Feb 2007

Tonnage through RC/CAS Sites

		J-M 07	A-J 07	J-S 07	O-D 07	J-M 08	A-J 08	J-S 08	O-D 08	J-M 09
Agnes	Recyclables	33	22	30	26	26	35	20	24	23
	Residual	578	540	522	554	461	617	438	438	358
	Total	611	562	552	580	487	652	458	462	381
Alexandra	Recyclables	613	715	903	725	632	943	870	670	708
	Residual	370	578	523	537	371	649	460	431	486
	Total	983	1293	1426	1262	1003	1592	1330	1101	1194
Blackstaff	Recyclables	572	638	945	653	564	843	737	551	579
	Residual	415	558	577	663	622	632	628	633	552
	Total	987	1196	1522	1316	1186	1475	1365	1184	1131
Clara	Recyclables	531	546	524	326	280	411	433	309	400
	Residual	987	1265	1073	1047	790	1220	929	934	1011
	Total	1518	1811	1597	1373	1070	1631	1362	1243	1411
Palmerston	Recyclables	505	587	799	669	639	864	869	658	655
	Residual	303	394	379	461	340	434	397	349	271
	Total	808	981	1178	1130	979	1298	1266	1007	926
Ormeau	Recyclables	n/a	n/a	n/a	261	290	354	436	349	373
	Residual	n/a	n/a	n/a	215	136	252	283	248	237
	Total	n/a	n/a	n/a	476	426	606	719	597	610
Springfield	Recyclables	n/a	23	54	57	33	55	46	48	40
	Residual	n/a	154	293	295	300	409	305	350	290
	Total	n/a	177	347	352	333	464	351	398	330
All Sites	Recyclables	2254	2531	3255	2717	2464	3505	3411	2609	2778
	Residual	2653	3489	3367	3772	3020	4213	3440	3383	3205
	Total	4907	6020	6622	6489	5484	7718	6851	5992	5983

% Household Waste Recycled & Composted



Food & Black Box Trial

Total

week	week commencing	Households	FOOD	Food kph	DRY	Dry kph	TOTAL	Total kph
-2	14/10/2009	2158			2.6	1.22	3.54	1.22
-1	21/10/2009	2158			2.8	1.32	3.74	1.32
1	28/10/2009	2158	1.73	0.80	3.5	1.63	5.24	2.43
2	04/11/2009	2158	2.5	1.16	4.2	1.94	6.68	3.10
3	11/11/2009	2158	2.84	1.32	4.5	2.09	7.36	3.41
4	18/11/2009	2158	0	0.00	0.0	0.00	0.00	0.00
5	25/11/2009	2158	0	0.00	0.0	0.00	0.00	0.00
6	02/12/2009	2158	0	0.00	0.0	0.00	0.00	0.00
7	09/12/2009	2158	0	0.00	0.0	0.00	0.00	0.00
8	16/12/2009	2158	0	0.00	0.0	0.00	0.00	0.00
9	23/12/2009	2158	0	0.00	0.0	0.00	0.00	0.00
10	30/12/2009	2158	0	0.00	0.0	0.00	0.00	0.00

