

Managing Health and Safety for Workplace Transport

Ruth Sleight

HM Inspector of Health and Safety

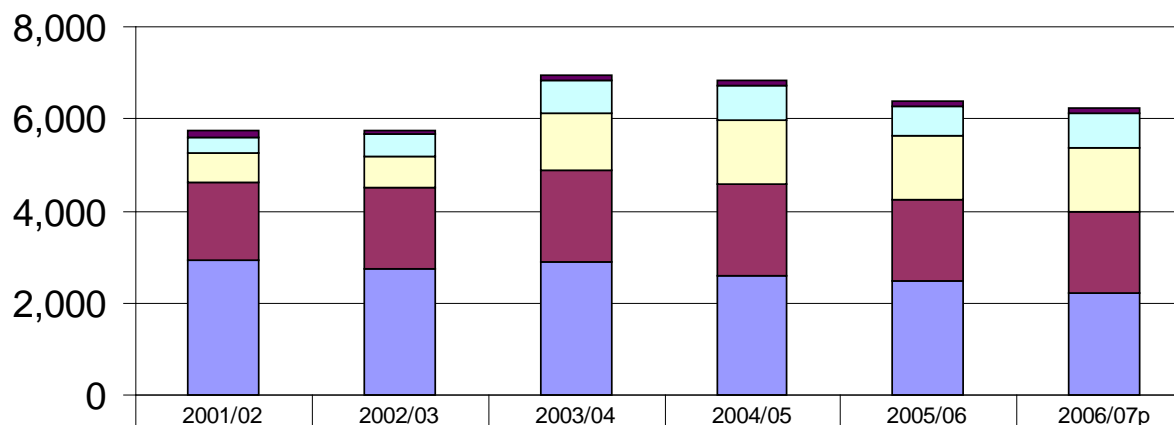
Workplace Transport

What transport operations are you responsible for?



Injuries Caused by Workplace Vehicles

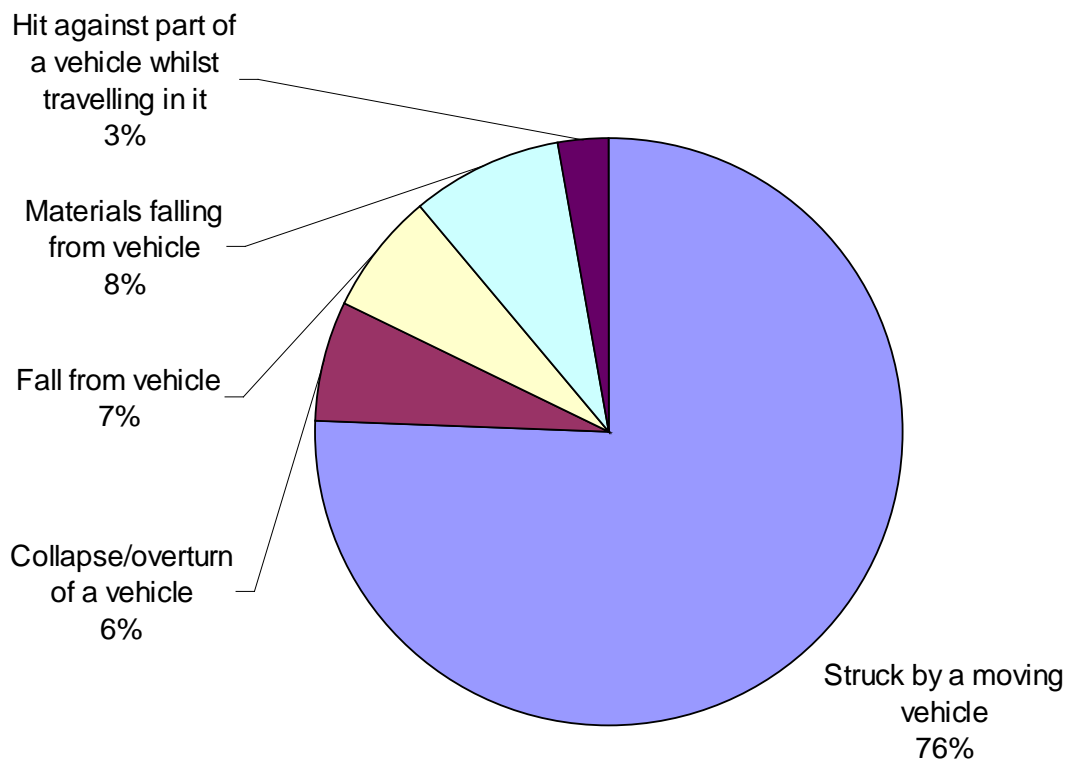
Workplace transport injuries to workers

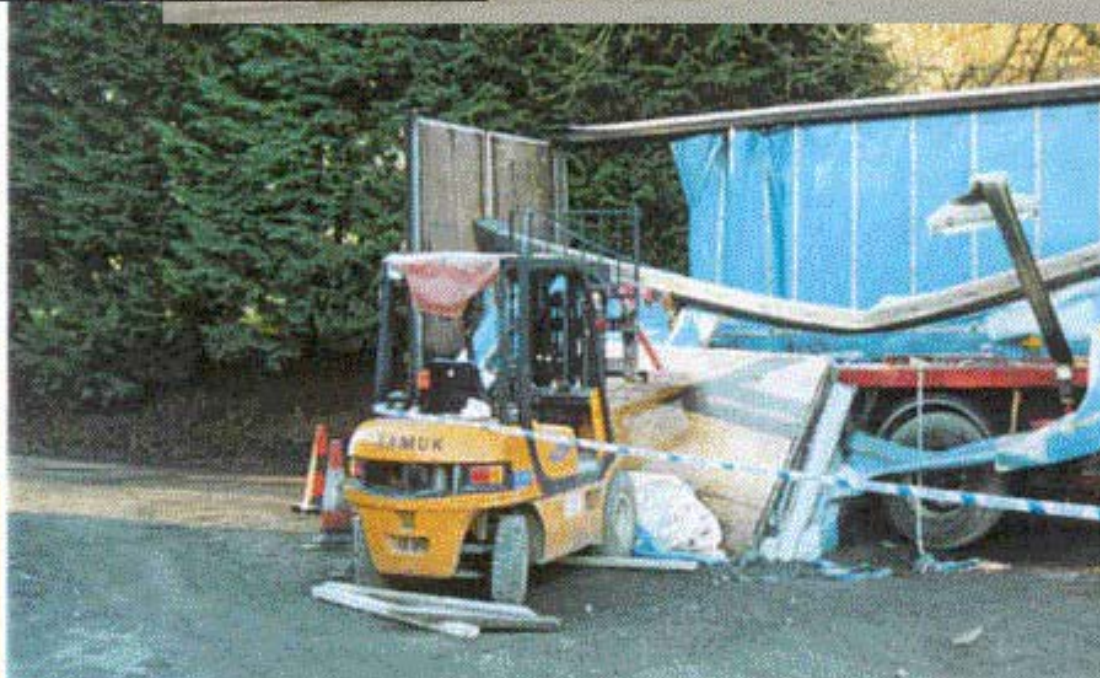
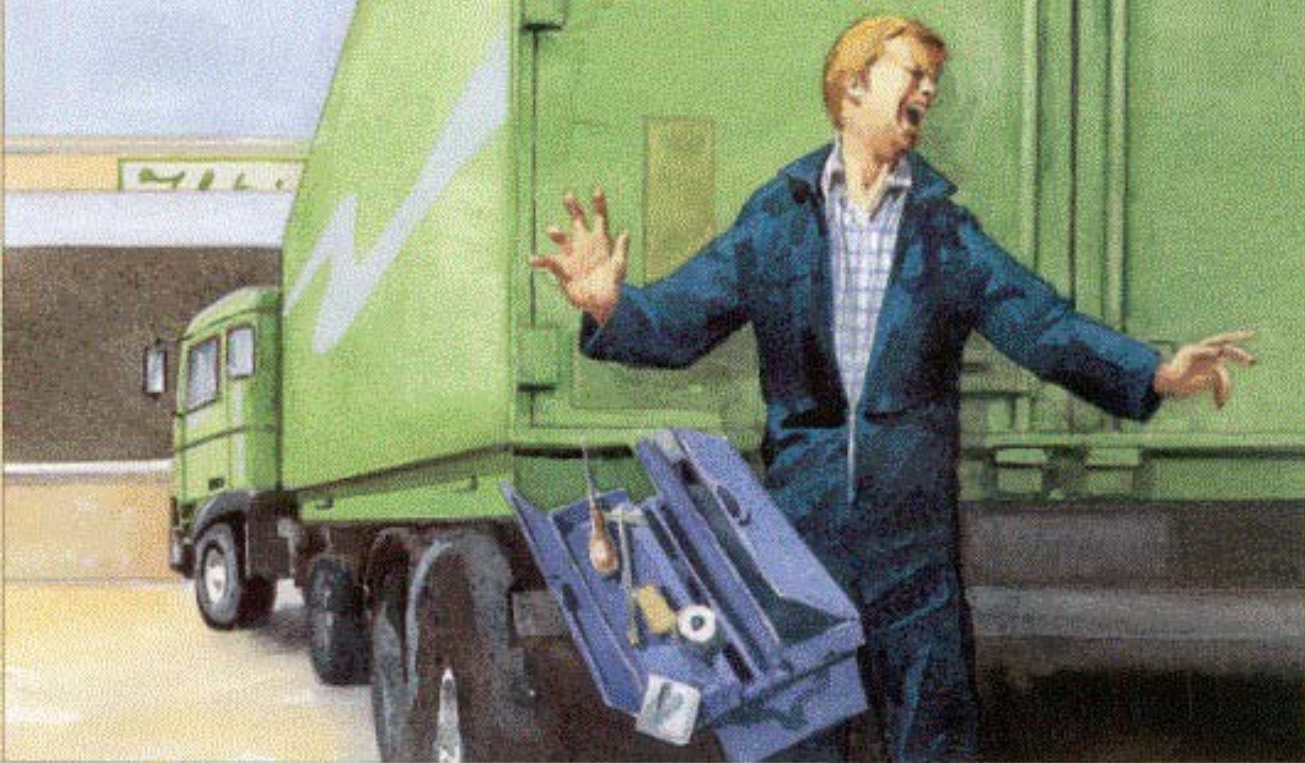


■ Collapse / overturn	138	88	97	97	104	93
□ Hit by falling object	354	492	729	760	646	755
□ Hit against vehicle while travelling in	640	669	1,222	1,398	1,359	1,376
■ Fall from vehicle	1,690	1,787	2,002	1,985	1,766	1,772
■ Struck by moving vehicle	2,919	2,724	2,898	2,593	2,492	2,220

Fatal Accidents

14 Year Aggregate Fatal Accidents By Kind (93/94 - 06/07)





The Legal Bit

Health and Safety at Work etc Act 1974

Duties to employees, public, others

Don't forget your **Contractors!**

The Legal Bit

Management of Health and Safety at Work Regulations 1999

Risk Assessment

- Control significant risks SFAIRP
- Appropriate records, monitoring and review

NOT A PAPER EXERCISE!

The Legal Bit

‘Reasonably Practicable’

Balance

Risk of harm - v - Sacrifice
(time, cost, trouble)



More Legal Bits

Other applicable H&S legislation:

Work equipment

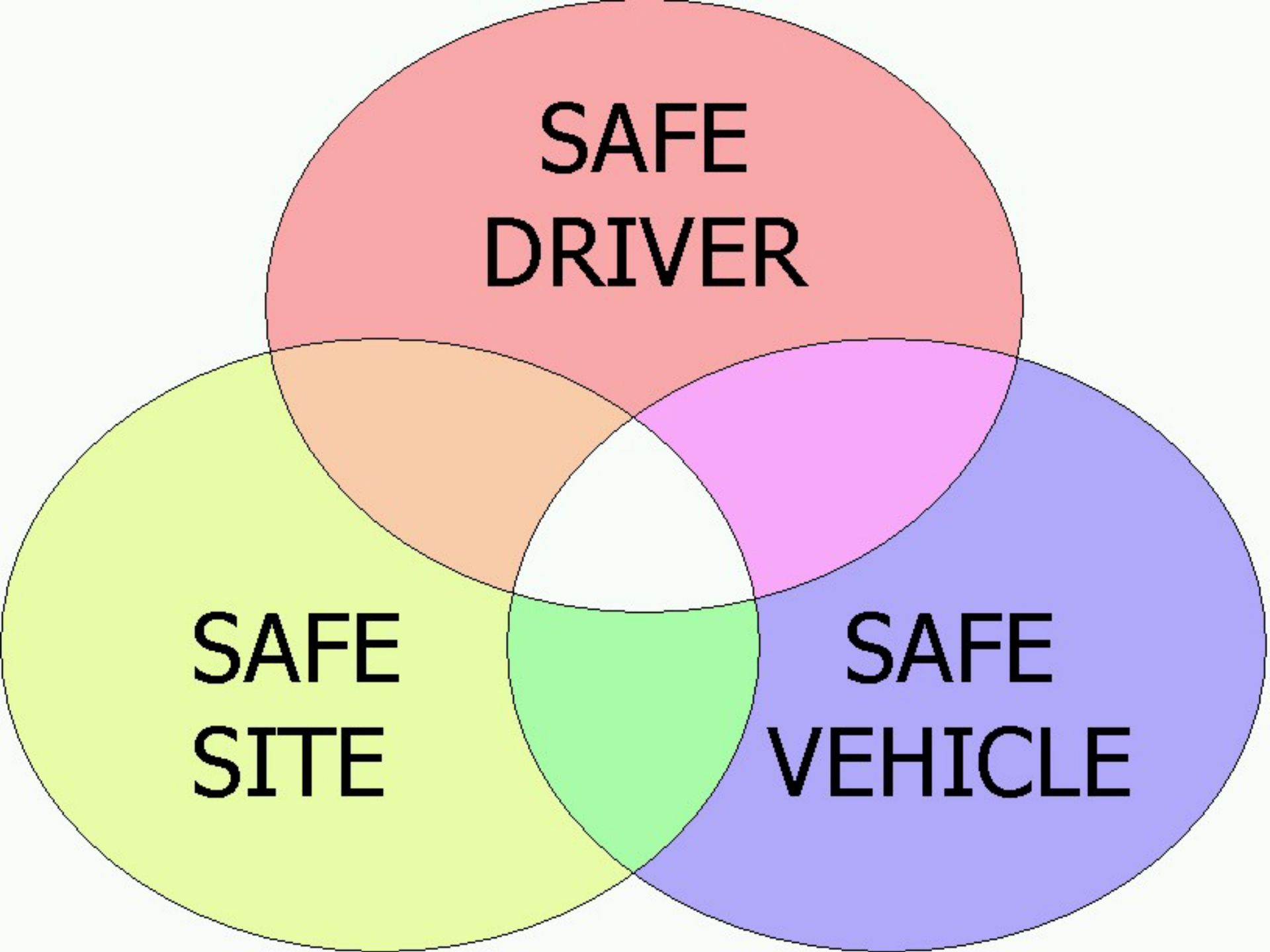
Chemicals

Pressure systems

Work at height

Manual handling

Personal protective equipment etc



**SAFE
DRIVER**

**SAFE
SITE**

**SAFE
VEHICLE**

Who can make most difference:

- **Manufacturers**
- **Vehicle specifiers/buyers**
- **Transport / Depot managers**
- **Drivers and people who work on vehicles**
- **Contractors / service providers**
- **Decision makers / portfolio holders**

Selecting Safe Vehicles

- **Road Vehicle (Construction & Use)**
 - **exert pressure on suppliers/specifiers**
 - **retrofit equipment**
- **Health and Safety law**
 - **vehicles suitable for purpose taking a/c of working conditions & risks to people using/maintaining/affected**

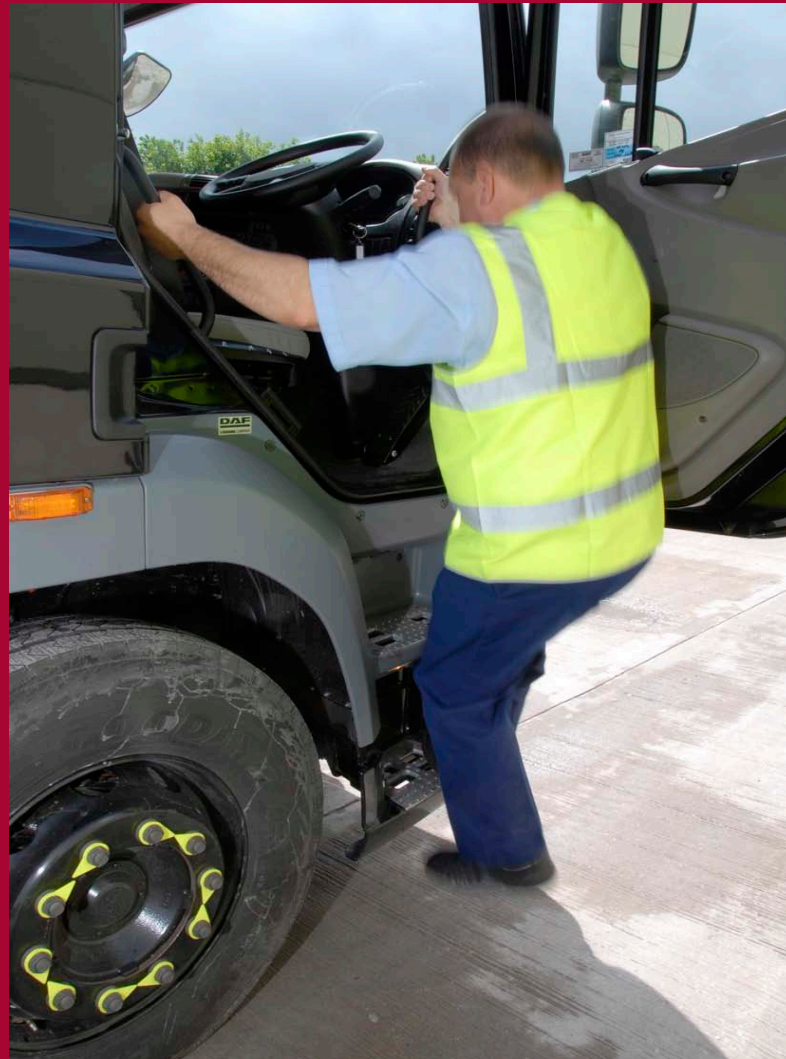
Selecting Safe Vehicles

Consider how people use, access, load, unload, work on vehicles:

- **Access during use & maintenance – WAH/beneath**
- **Driver visibility – windows, mirrors, cctv**
- **Warnings – lights, reversing alarms/lights, beacons, markings**
- **Load carrying – people or objects, capacity, anchor points, seats/belts/roll-over protection/falling object protection**
- **Noise**
- **Manual handling – e.g. people with poor mobility, kerbside waste sorting**

If not on-vehicle consider on-site controls!

Selecting Safe Vehicles



Selecting Safe Vehicles



Selecting Safe Vehicles



Selecting Safe Vehicles





Vehicle Maintenance

Duty to ensure work equipment is in good working order:

- **Inspection - Driver's daily checks**
 - **Maintenance Inspection**
- **Planned preventive maintenance**
- **Statutory examination by competent person e.g. FLT's, tail lifts, slings, etc**
- **Reporting system and record keeping!**

Workshop Safety

- **Ownership of risks**
- **RA & embedded safe systems of work**
- **Training and instruction**
- **Supervision and monitoring**
- **Feedback and worker involvement**

“It’s good to talk”

Workshop Safety

Workshops – some dangers:

Collapse of propped vehicles/vehicle movement

Falls from vehicles

Hot work - fire & explosion, welding fumes

Bodywork – inhalation of isocyanates, dust

Fuel/oil – fire & explosion, exhaust gases, dermatitis,

Poor Housekeeping – slips, trips

Tyre/gear box fitting – MSD's

Noise

Asbestos

Workshop Safety for Work at Height



Workshop Safety for Work at Height



Workshop Safety

Workshop vehicle management:

- Pedestrian segregation
- Road markings / signage
- Safe access & egress
- Traffic control e.g. bollards, barriers, speed humps, etc
- Supervision e.g. policing, CCTV, damage records

Further information

- **HSE transport web page**
www.hse.gov.uk/workplacetransport/index.htm
- **HSE 'Falls from vehicles' campaign web page**
www.hse.gov.uk/fallsfromvehicles/index.htm
- **HSE motor vehicle repair web page**
<http://www.hse.gov.uk/mvr/index.htm>
- **HSE Infoline 08701 545500**
- **HSE Books 01787 881165**

Managing Health and Safety for Workplace Transport



THANK YOU

N Ruth Sleigh
HSE
900 Pavilion Drive,
Northampton, NN4 7RG
01604 738369
ruth.sleigh@hse.gsi.gov.uk