

Taking Stock Moving Forward

APSE Seminar

Thursday 12 March 2009

“CSS in a Time of Change”

Matthew Lugg

Chair of the CSS Engineering Committee

Chair of the UK Roads Board



Topics Covered

- CSS
 - Organisation
 - Current issues
- CSS input UKRLG
 - UKRB Structure
 - UKRB Priorities



- Established 1885
- Represents local authority chief officers from across the UK with responsibility for strategic planning, transportation, the environment, waste management and economic development

CSS member are responsible for:-

- 75% of the road network
- 66% of the land area
- 50% of the population of England and Wales



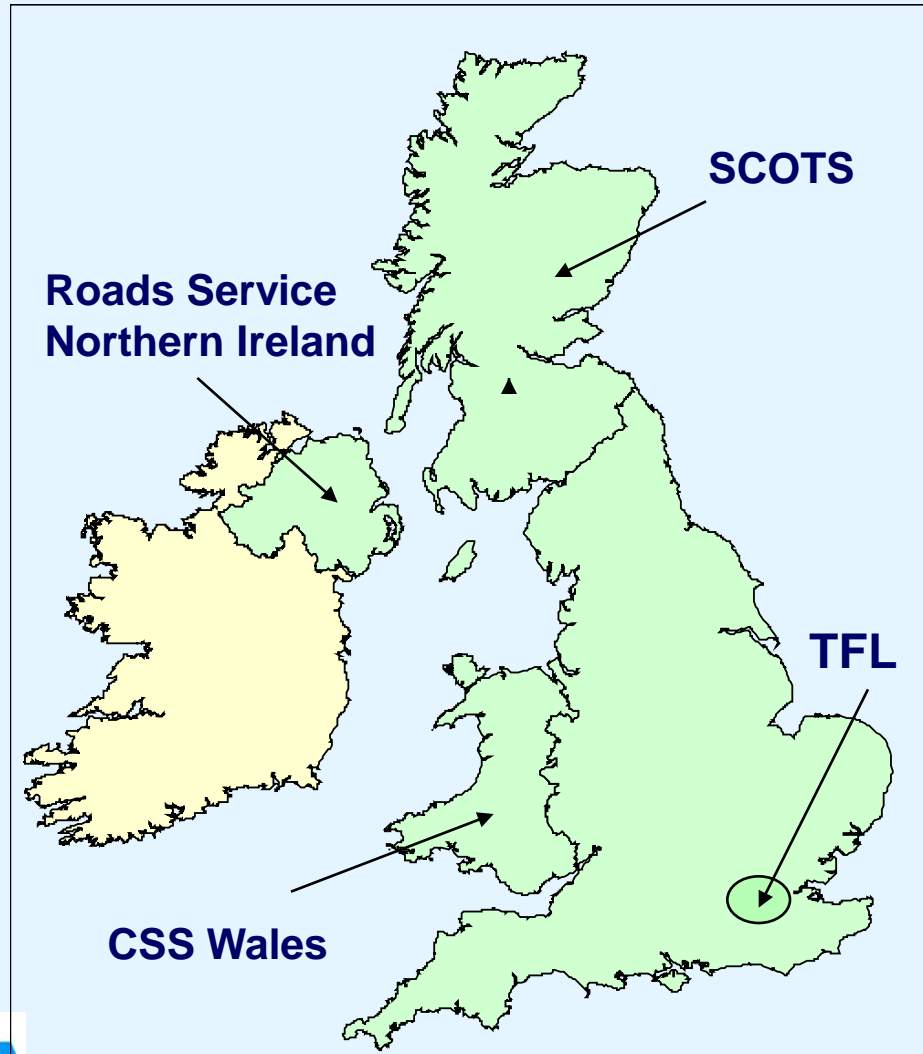
CSS Mission

- To influence proactively national and international social, economic and environmental policy and investment, and to maintain a strategic long and medium term view on issues related to its membership
- To promote the acquisition and exchange of knowledge and experience, and to enable mutual support and help amongst its membership

CSS is:-

- Nationally and internationally respected, authoritative professional body
- First choice for Government and stakeholders for advice
- Strategically positioned (with plan and resources) on hot issues
- Has an inclusive, participative and responsive membership
- An advisory centre of excellence, but reaching to regions
- Influencing policy for members and customers

CSS Membership is drawing from all 4 corners of the UK



CSS Structure

Presidents Team

President

**Vice
President**

**Second Vice
President**

**Honorary Secretary
& Treasurer**

Committee

Engineering

**Planning &
Regen**

Transport

Environment

Finance

Working Groups

Bridges

Soils and Materials

**Highway
Management**

Highway AM

Street Lighting

**Service
Improvement Group**

Countryside

Traffic and Safety

**Traffic Systems
Working Group**

**Integrated
Transport – Joint
with ATCO**

**Information
Management**



CSS Topical Issues

Environment Committee

- Climate Change
- Pitt Report
- Revised EU Waste Framework
- Efficiencies

Finance Committee

- Regional Funding Allocation
- Highways Inflation
- Impacts of credit crunch
- CSS IPSOS/MORI Survey

CSS Topical Issues

Planning and Regeneration

- Published “Making the most of our Economic Potential - Looking Beyond the Core Cities”
- Sustainable Communities
- Community Infrastructure Levy
- Sub National Review
- Olympics

Transport

- Local Transport Bill
- LTP3
- National Traffic Signs Review

CSS Topical Issues

Engineering

- Street Lighting Energy
- Bridges – Road/Rail Interfaces
- TAMPS
- National Road Condition Reporting
- Input into ICE State of the Nation – Defending Critical Infrastructure
- Advice to LGA on the severe winter weather
- Publicising the damage to roads caused by the severe weather

A report from the CSS Transport Futures Group

TRAVEL IS



GOOD

CSS Approved Research Bids 2009

- **Engineering**

- Correlation of Griptester and SCRIM
- Design and maintenance regimes for SUDS
- Performance specification for sub-based and reinstatements
- Creation of a National Highways Inspectors Qualification

- **Planning and Transportation**

- Taking forward economic regeneration and place shaping in times of recession
- Contribution to the production of the “Manual for High Streets”

CSS Approved Research Bids 2009

- **Environment**

- Pitt response and resources
- Transport
- Investigation of PV² criteria – Pedestrian Crossings

- **Management**

- Skills/recruitment issues
- Housing growth and infrastructure

Strategic Objectives

- **Develop and promulgate best practice**
 - On technical, financial, administrative and operational matters;
 - Relating to sustainable construction, maintenance, availability, safety and use;
 - Of carriageway, footway and cycleway structures;
 - Taking account of differences between four UK countries and urban and rural areas

Strategic Priorities

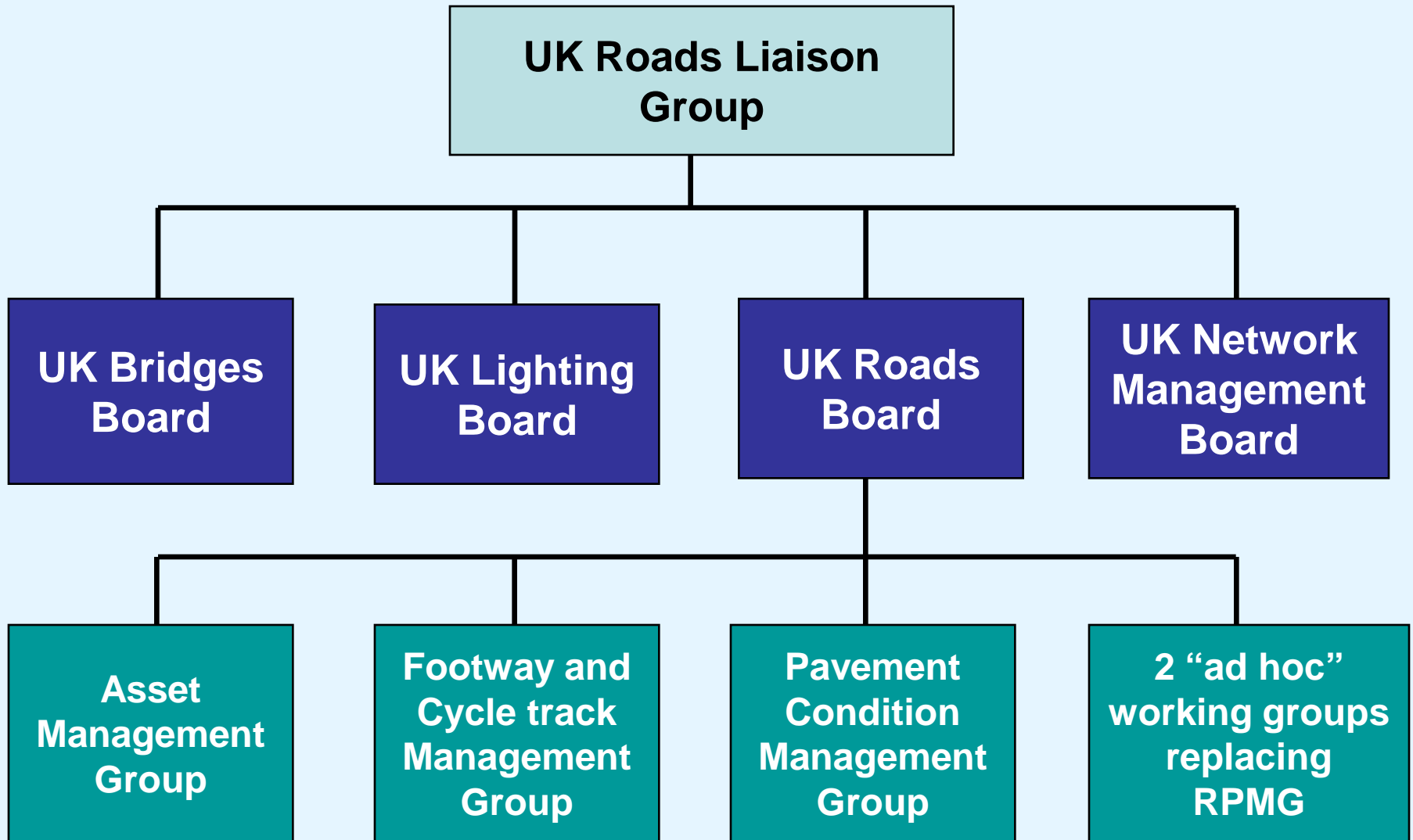
- Safety
- Accessibility
- Congestion
- Environment
- Economy
- Efficiency

ROADS

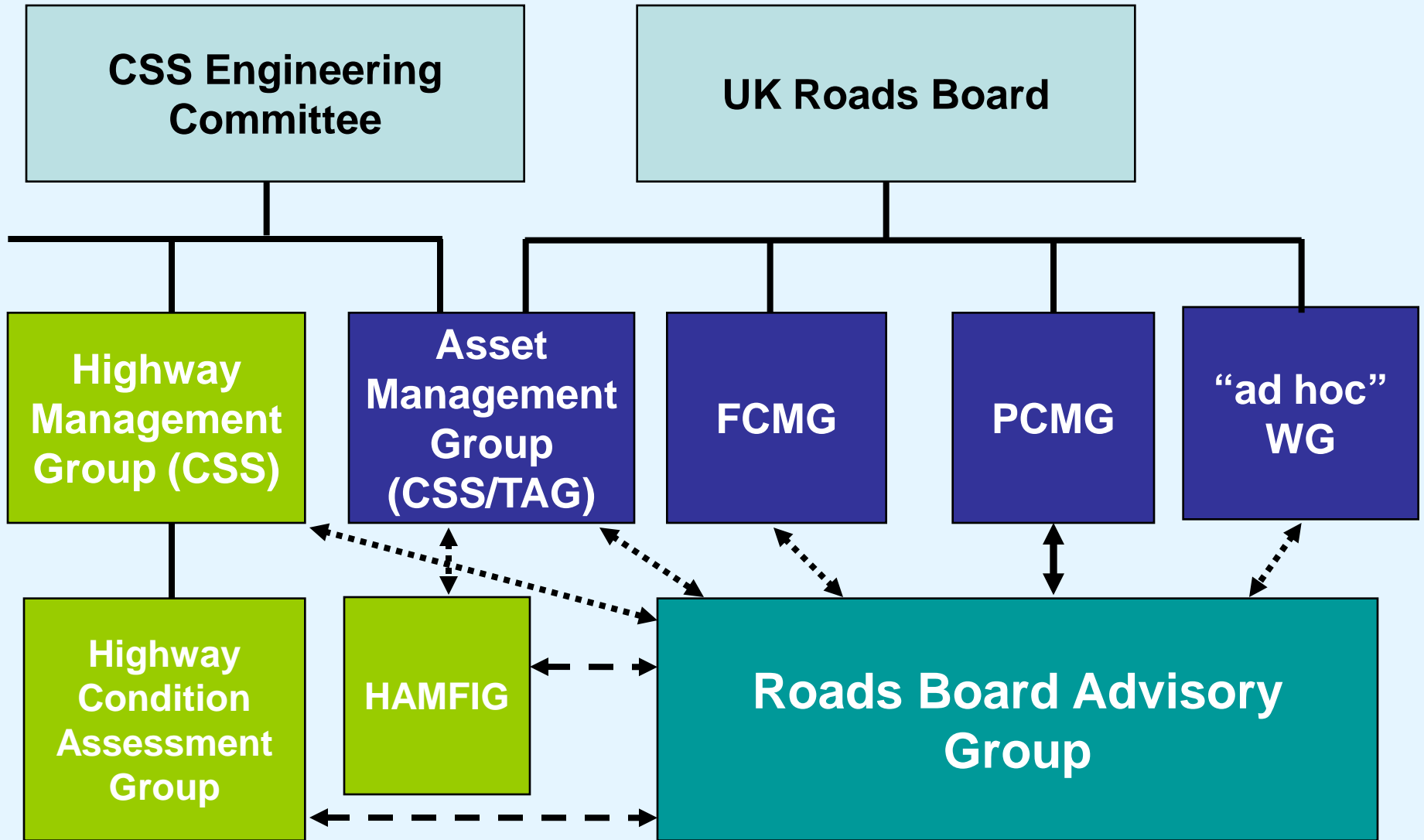
UK ROADS BOARD

- **Formed – 2001**
- **Representations – DfT, Scottish Executive, Welsh Office, SCOTS, NI Roads, CSS, TAG, TfL, HA, LOTAG**
- **Meets – 3 / 4 times a year**

UKRLG Structure



Relationship between CSS and UKRB



Roads Board Advisory Group



**Local Authority
representatives**



**PMS
developers**



**Visual
surveyors**



**Machine
surveyors**

Local
Government
Association

CSS Transport
Information
Management
Committee

Highway
Efficiency
Liaison
Group

Highway
Term
Maintenance
Association

Progress UKRB Advisory Group

- Pavement Condition Information Systems support contract
 - Awarded to TRL and Atkins June 2008
- PCMG formed
 - November 2008
- RBAG formed December 2008
- UKPMS website re-established
- PCIS newsletters
 - Every few weeks since September 2008

Progress UKRB Advisory Group

- UKPMS annual health check 2008
- Inspector accreditation re-established
 - 131 inspectors currently accredited
 - 9 tested or re-tested so far (1 fail)
- SCANNER accreditation
 - 8 machines currently accredited
 - 2009 re-accreditation started
- Review of UKPMS core functionality
 - Issued for tender August 2008
 - Awarded to TRL and Atkins November 2008

Pavement Condition Information Systems

(Including support for UKPMS, Visual Surveys & SCANNER)



We welcome your comments and questions at:	newsletter@ukpms.com
The UKPMS website is at:	http://www.ukpms.com
If you require further information about:	You can contact us at:
UKPMS	ukpms@trl.co.uk
SCANNER	scanner@trl.co.uk
Inspector accreditation	visualsurvey@trl.co.uk
FCMG	infor@footways.org
Telephone help desk	01344 770480

Asset Management

- CIPFA Report
“Local Authority Transport Infrastructure Assets. Review of Accounting, Management and Finance Mechanisms”
- Co-sponsored by DfT and Treasury
- Recent announcement by Treasury that they fully support the recommendations

Asset Management

- CIPFA Report

Main findings

- AM potential to deliver significant efficiency gains and improvements (estimated 5% of £5.0bn)
- AM approach is the only one capable of fully supporting sound financial management and effective stewardship of the asset base
- CSS/TAG guidance needs to be updated

Asset Management

- CIPFA Report

Main findings

- Needs to be an early change to the relevant accounting guidance contained in the SORP (Local Authority Statement of Recommended Practice)
- Authorities need to have good quality consistent information
- Proposed interim solutions to address the WGA (Whole Government Accounts) information requirements, using a combination of natural unit costs, asset inventory and condition infrastructure

Asset Management

- CIPFA Report

Main findings

- Meeting the timetable will require costs of £15m to set up systems and collect and input inventory data
- Passenger Transport Executive (PTE) should also implement asset management

CSS/TAG Work Plan

- Getting started with Asset Management
- Software specification for the calculation of GRC and DRC
- Levels of service
- Life-cycle planning
- Risk management

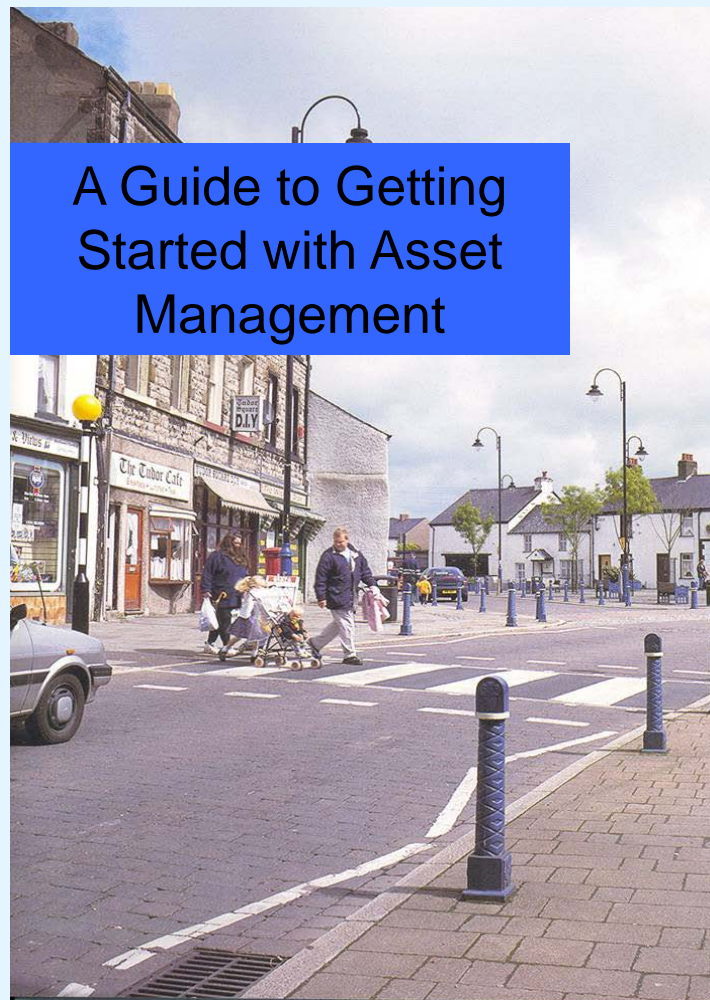
HAMFIG

Highway Asset Management
Financial Information Group

- Membership – CIPFA, DfT, English LHAs, SCOTS and Welsh;
- Gross and Depreciated Asset Values through Component Depreciation;
- Workshops – February and March 09
 - Durham 13th March; London 18th March;
- Please respond to Consultation;
- www.leics.gov.uk/amp

What Next?

- Drawing advice together to produce a plain English publication
- Bring all advice together
- Broaden the commission to overview all publications
- Consult, engage, involve



UKRB Footway Group

New Footway Indicator

- Course Network Survey Measure (CNSM)
- Repeatability good
- Reproductivity good
- Correlation with safety inspections good
- Productivity good (twice the rate of BVI)

Further work to validate findings

UK Roads Board Research

- Commuted sums for future highway maintenance – recently completed
- Design and maintenance guidance for local roads – Phase 1 completed
- A code of practice for future management systems maintenance management
- Carbon footprint for highway maintenance
- Deterioration modelling

A new cost-effective form of traffic calming



Thanks!

