

Workshop H

Sports and leisure facility management and Culture, Leisure and Sport

Trevor Hawkins
PLUS GLAMOROUS ASSISTANT

About today's workshop

- Review of the year & Trend analysis
- Information needs
 - *Different management vehicles*
 - *Free swimming*
 - *National Indicators*
- Future Scenarios
 - Usage & Business Issues
 - Focus for Leisure
- Culture, Leisure & Sport
- New Developments
 - Process Benchmarking
 - Direction of travel reports
 - Leisure Connect
- Action plan



Review of the year

- 2007 Action Plan
- Participation rates
- Trend analysis

07/08 Action Plan

Increase number of dual use facilities	Working group said that APSE can publicise that the model includes dual use facilities in marketing.
Engage with schools/education to increase data recording	Working group thought that no further action should be taken on this as they would be criticised if APSE also asked schools for data

07/08 Action Plan

Work with MIS supplies to collect data in PN format	Working group suggested having a nominated person in APSE as the contact who MIS suppliers should liaise with if needed
Energy indicators needed based on usage	Defer until next year as new carbon footprint categories come out in April

07/08 Action Plan

<p>% take-up of leisure and type schemes</p>	<p>The working group decided not to include this as it wouldn't be comparable between authorities</p>
<p>Frequency distribution of visits by card holders</p>	<p>The working group thought that we should wait to see what happens with the national indicators as at present indicators are based on throughput rather than frequency</p>

07/08 Action Plan

Direct debit related indicators	The working group thought that we should wait to see what happens with the national indicators, as above.
Participation by age groups	Use the APSE user profile and satisfaction survey for these indicators.

07/08 Action Plan

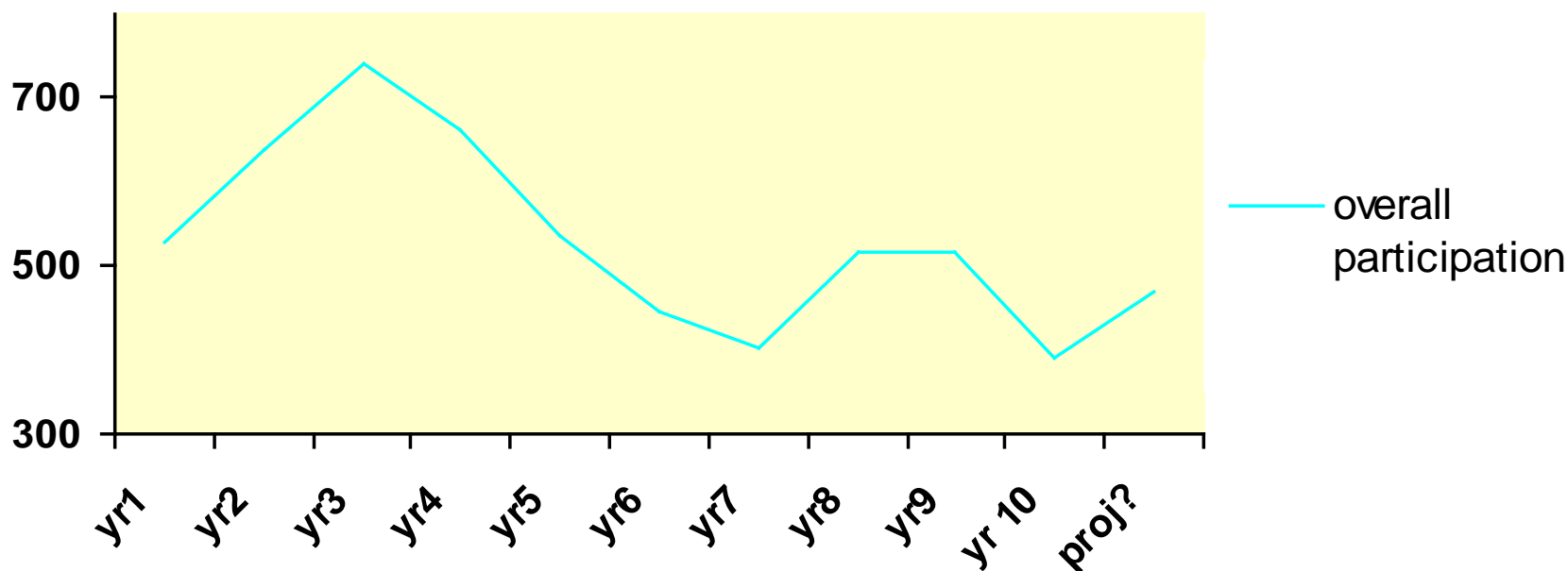
Send out reports in non PDF format

Data tables are available by excel
The working group thought that this was to be able to cut and paste the information in to other documents and therefore APSE should publicise guidance on how to do this in a PDF.

Year 10 - S&L: the numbers

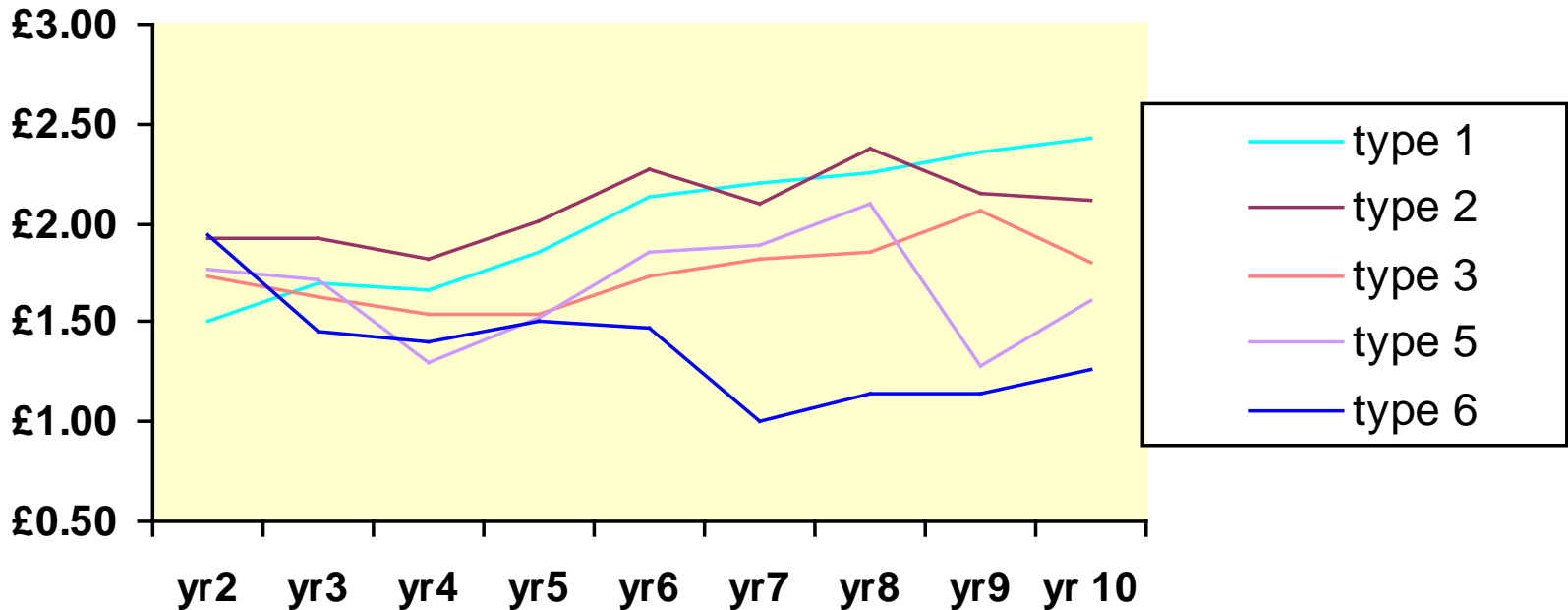
- 392 Facilities in first batch (est. 450 - 470)
- 2007 comparison: 476 facilities (final 516)
- 1509 facilities since 1999

Participation across the years

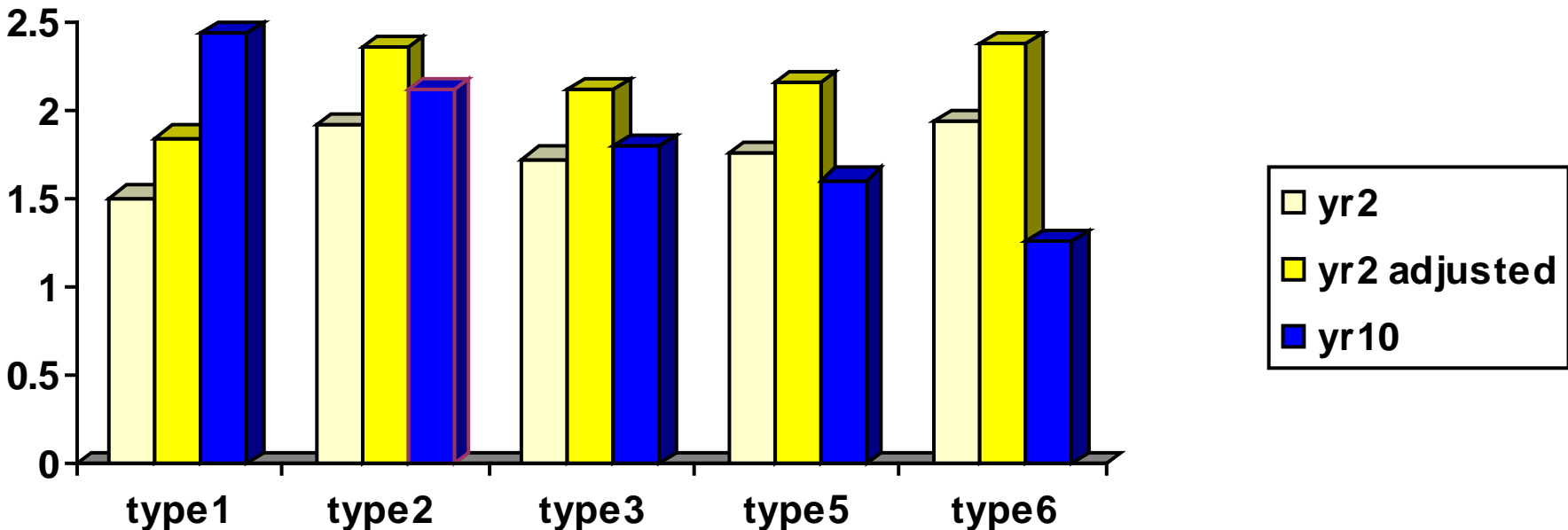




Year 10 : average subsidy per head (01a)

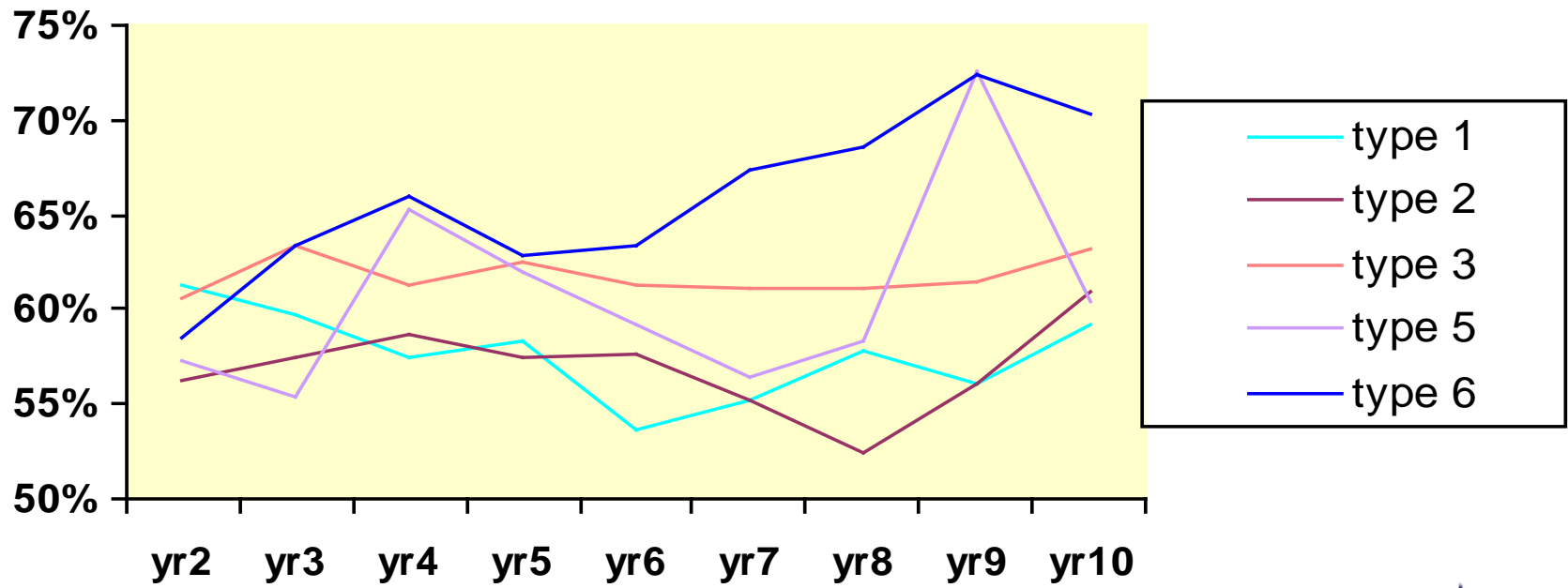


Year 10 adjusted : Average subsidy per head (01a)

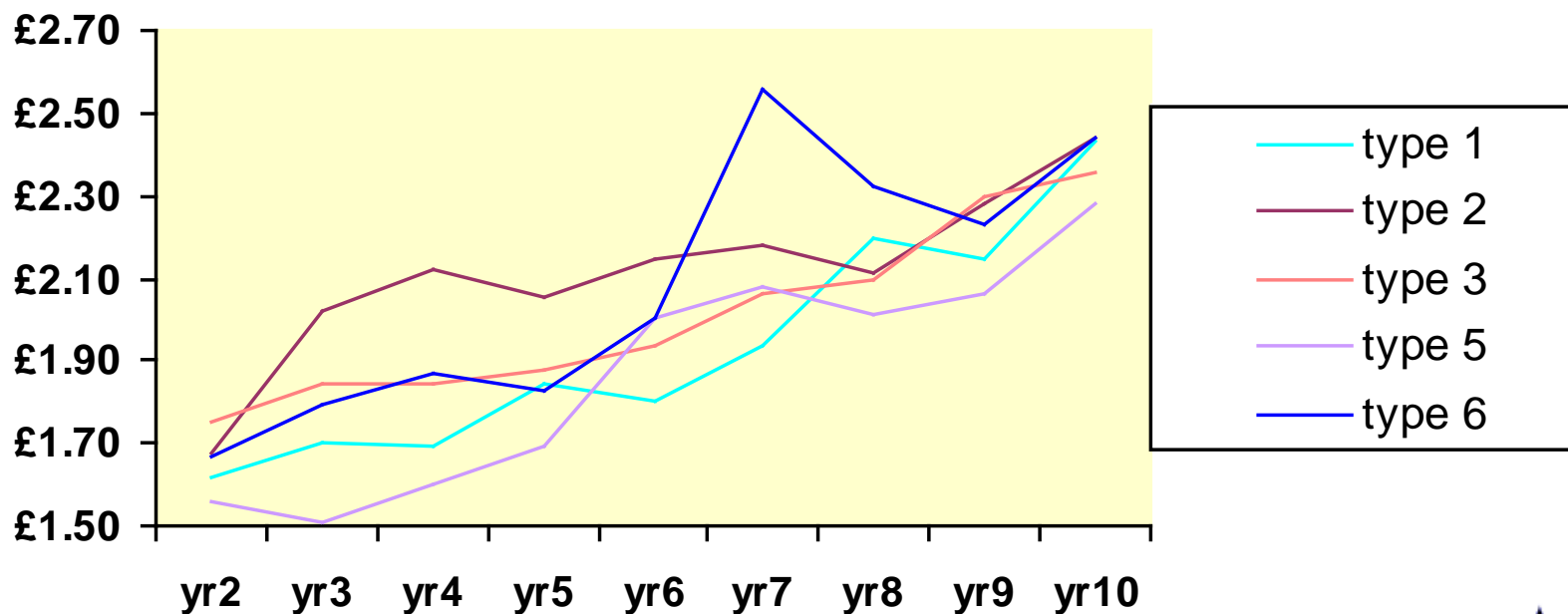




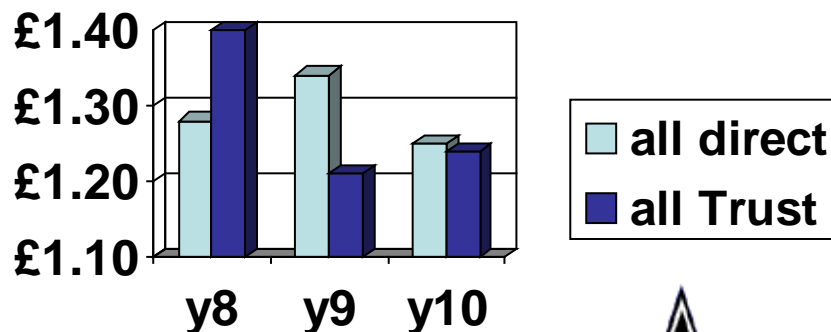
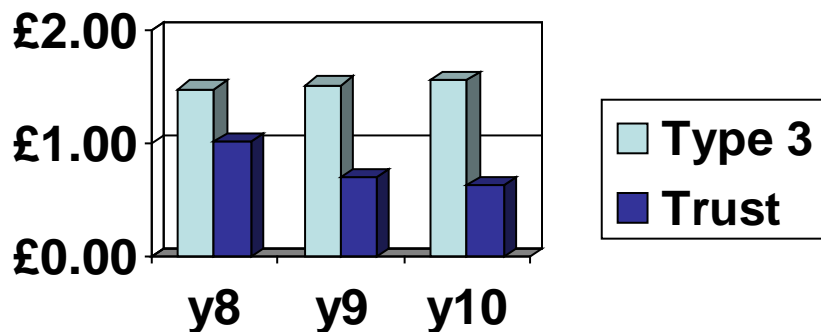
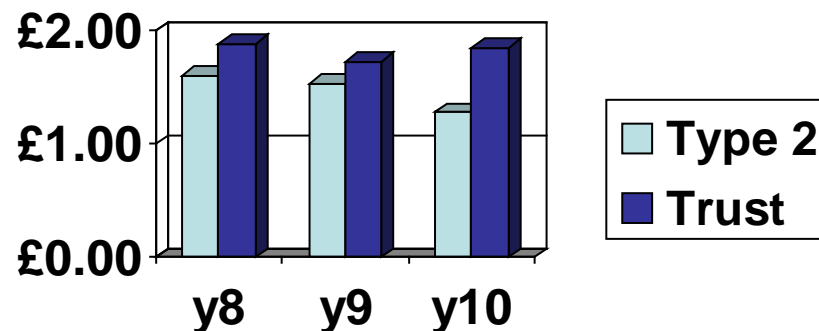
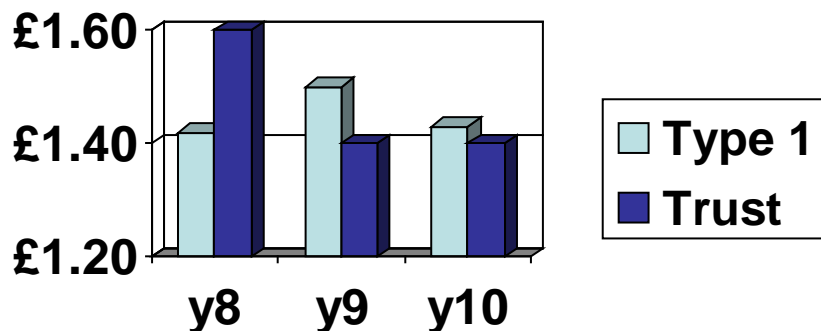
Year 10 : average recovery rate (03)



Year 10 : average spend per head (04)



Pi11a Subsidy per visit



Information Needs

- Management vehicles
- Free Swimming
- National indicators

Management vehicles

- Private sector contracts
- Trusts
- In - House

The logo for apse, featuring the word "apse" in white lowercase letters inside a purple oval shape.

performance networks

Private sector contracts

Case Study:

Wolverhampton MBC

Trusts

- Specifying outputs
- Collaborative working
- Member reporting
- Knowledge of inputs
- How benchmarked

In-house

- Specifying outputs
- Corporate working
- Member reporting

Benchmarking

- VFM Studies
- 2006 Audit Commission Report
- Trust Contracts lifecycle
- Further research

Free Swimming

- Take up?
- Experience and expectation
- Monitoring success
- Monitoring impact

National Indicators: England

Ni 8

% of adult (16 plus) who participate in sport for at least 30 minutes on 3 or more times per week

Active peoples survey

National Indicators: England

Ni 57

children and young peoples (5-19 year olds) participation in sport

Independent survey

National Indicators: England

Ni 119 (2009)

Self reported measure of people's overall health and well being

New Place survey

National Indicators: Wales

LCS/0809/NEW1

The number of visits to sport and leisure centres during the year per 1,000 population

National Indicators: Scotland

- *the number of attendances per 1,000 population for all pools*
- *other indoor facilities - the number of attendances per 1,000 population*

Coffee break...



THE WELL DONE YOU CAME BACK QUIZ!



Round 1

How do you work out the
vat element when it is
shown as inclusive?

- $(\ast 7) / 47$
- $(\ast 3) / 23$

Round 1

What is the personal tax allowance (under 65)?

- £6035
- £5785

Round 2

**Marie Celeste
found abandoned in?**

- 1872
- 1782

Round 2

**How many litres equal 1
gallon?**

- 4.546
- 4.654

Round 3

Farthest North?

Blackpool or Bridlington

Round 3

Farthest North?

Pontypool or Colchester

Round 3

Farthest North?

Malaig or Aberdeen

Tie Break

How much VAT is included in an inclusive bill of £23?

Usage

- participation not visits
- 2012?
- Working with other bodies
- Investment profile
- Competition?

Business

- visits mean income
- Membership schemes
- 2012?
- Partnering finance
- Competition?

Focus for Leisure

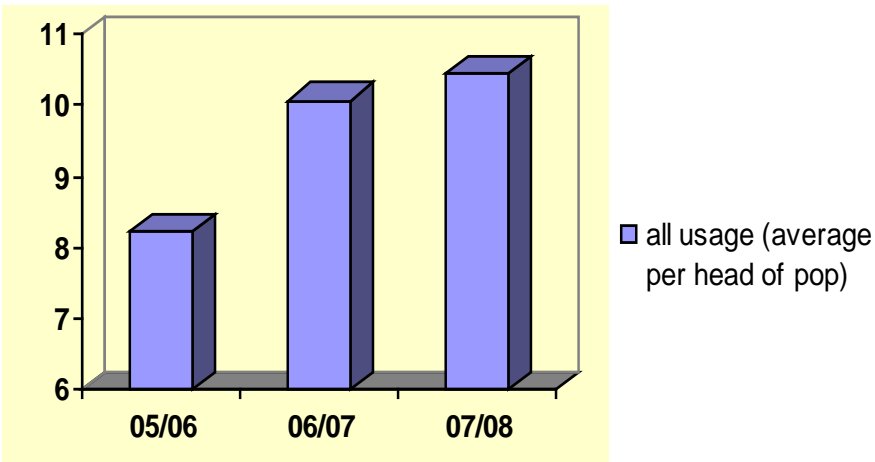
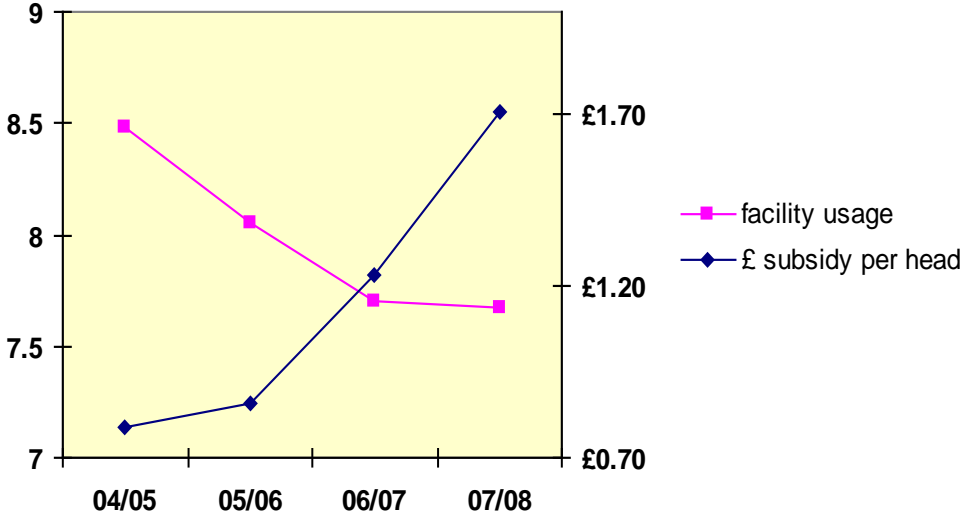
- *Departmental Structures*
- *Client arrangements*
- *Top table representation*
- *Political engagement*

Culture Leisure and Sport

- ***Participation rates “stuck” at 15***
- ***6 new additions***
- ***9 continuous submissions***



Generic Sports Data



New and improved services

- *Direction of Travel*
- *Process Benchmarking*
- *APSE Connect*
- *Templates*

2008 Action Plan

Action	who	when
Increasing membership/participation		
Information needs		
Membership benefits – new services, research, website		
advocacy		
customer satisfaction		
reserach		

Thank you!

Good luck in tonight's awards!

.....but it's not what it's all about!

apse

performance networks

Contact details

Trevor Hawkins

Email: enquiries@apse.org.uk

Association for Public Service Excellence

2nd floor Washbrook House, Lancastrian Office Centre, Talbot Road,
Old Trafford, Manchester M32 0FP.

telephone: 0161 772 1810

fax: 0161 772 1811

web: www.apse.org.uk



INVESTOR IN PEOPLE



ISO 14001
REGISTERED FIRM

GB 11409



ISO 9001
REGISTERED FIRM

GB 11132



ISO 27001
REGISTERED FIRM

GB 14074