

## The impact of Building Schools for the Future (BSF) on Local Authority Leisure provision

Maximising opportunity for leisure and community provision through Building Schools for the Future (BSF)

Murram Anwar  
BSF Culture Project Manager  
(working on behalf of Sport England and Arts Council North West)

## APSE 08 Conference – Delivering healthy communities

*“Sport and leisure people are good at making the case for sport and physical activity supporting other agendas like health, school improvement and social inclusion. It is essential to continue to make this case throughout the engagement with the BSF process to ensure that everyone is onboard and recognises the importance of quality sports provision and the benefits of community access to school facilities.”*

Colleen Bevan, Head of Sport, Bristol City Council

## Context of the future...

- Decrease in lottery funding since 1990s....
- Ageing sports facility stock – replace, relocate or close?
- Housing/population growth – new homes and communities
- Future increased demand from -
  - Increased participation (3 x 30)
  - Increased population – ageing population
- Childrens Plan and ECM - Extended activities and community use
- New commercial providers – health/personal fitness
- Health and Obesity agenda
- Increasing use of ICT and physical activity – Wii Fit
- Requirement for flexibility of provision – demand for non traditional sports

## Why engage in BSF?

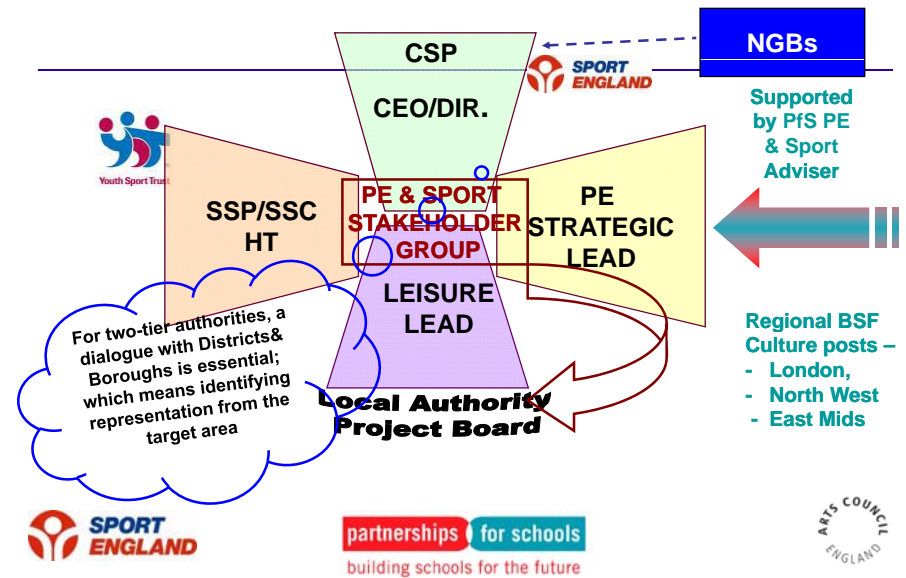
- **Strategic capital investment programme (range from £70 - £300m per authority – average £150m)**
- **Estimated 10% can be utilised for sports provision**
- Transformation of learning and teaching environments – Improving schools and communities through PE and Sport
- New Key Stage 3 requirements:
  - Developing skills in physical activity
  - Developing physical & mental capacity
  - Making informed choices about healthy, active lifestyles
- ICT focus (10% budget)
- PfS national delivery vehicle – Academies and BSF

## Current programme delivery

Wave 1 – 4 2003 – 2007	Wave 5 - 6 2007 – 2008	Wave 7 plus 2009 onwards
No formal assessment criteria for PE and Sport	Introduction PE and Sport Advisers (Based within PfS and funded by YST/SE/PfS)  PE and Sport formal assessment criteria for Strategy for Change  PE and Sport stakeholder groups	<p><b>Focus on early strategic planning and visioning at least 6 – 12 months before formal entry</b></p> <p><b>Alignment of health and physical activity with PE and Sport stakeholder group</b></p> <p><b>Culture integrated as part of formal assessment</b></p> <p>Greater focus on regeneration and asset management strategies</p>

SPORT ENGLAND | partnerships for schools | building schools for the future | ARTS COUNCIL ENGLAND

## What is a PE and Sport stakeholder group?



## What sport (culture) and leisure need to do...

Strategic Planning



Getting the right people involved



## Partnership working

### Knowsley BSF

- Senior level ownership: LSP Executives on board - utilised LAAs and SCS as key levers for BSF
- Good links between PCT and leisure leads
- HT Specialist Sports College actively engaged
- PFI credits used to buy additional community use time beyond school day
- Alignment of funding streams – NOF and FA to upgrade all weather pitches
- SE design guidance as a minimum – not BB98 (minimum design specification)

## Community Use

### Blackburn approach

- Collective vision for community use across Childrens Services, Leisure and Culture and BSF team
- Identified different levels of community use (basic access, usage and engagement)
- Advocacy – from top down and bottom and delivering against ECM
- Sustainable – charging policies and club links
- Management options and VAT analysis

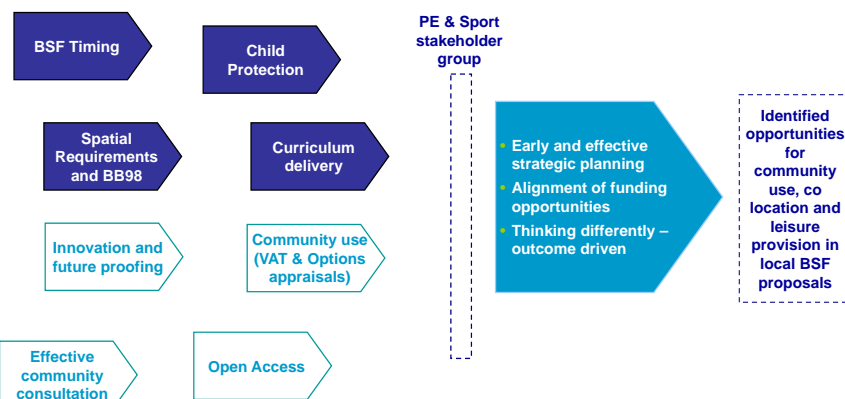


## SE Strategic Planning tools

- **Active Places / Active People**
- **Facilities Planning Model**
- **Sport England BSF webpage.** Guidance documents including:
  - Designing for Sport on education sites
  - Win Win Scenario – Community Sport and Arts on Education sites
- **Facilities Improvement Service** – Support and improve strategic planning for sport (building on existing LA strategies)
- Regional Facilities work



## Challenge or Opportunity?



## Summary

- Leisure sector has an unique opportunity to influence the provision of facilities, and to address some of the key challenges / Government targets the sector faces
- The BSF PE and Sport Stakeholder Group is recognised as the vehicle through which the sector will coordinate, collaborate and contribute to maximise this opportunity
- BSF is and should be seen as an opportunity – can either let it happen to you or seize the initiative and make a difference to local communities



## Further information

- **Sport England** [www.sportengland.org/bsfinfo](http://www.sportengland.org/bsfinfo)

Murram Anwar BSF Project Manager

[Murram.Anwar@sportengland.org](mailto:Murram.Anwar@sportengland.org)

0207 273 1725

- **Partnerships for Schools**

[www.partnershipsforschools.org.uk](http://www.partnershipsforschools.org.uk)

- **BSF Culture** [www.bsf-culture.co.uk](http://www.bsf-culture.co.uk)

Sport England and Arts Council supported web resource for BSF

