

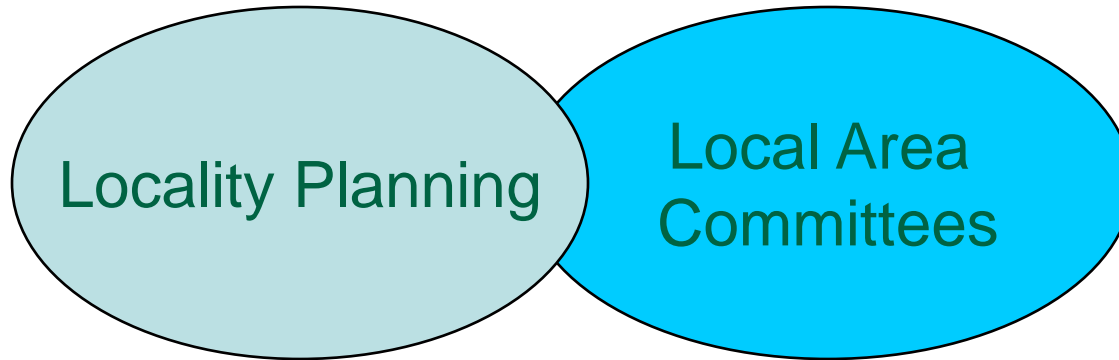
Neighbourhood Model and Partnership Working

Locality Planning in West Lothian



Alex Linkston
Chief Executive

Neighbourhood Model



- **Locality Planning** focuses on key priorities to improve people's quality of life
- **Local Area Committees** have much broader focus on general community issues

West Lothian Council delivers

westlothian.gov.uk



INVESTOR IN PEOPLE



Locality Planning

- To co-ordinate and target services locally on a multi-agency basis
- Working in partnership with communities, and promoting engagement and involvement of local people
- Lead Officer from Community Planning Partnership assigned to each ward
- To provide the mechanism for the delivery of the high level outcomes set out in the Single Outcome Agreement at a local level

West Lothian Council delivers

westlothian.gov.uk



INVESTOR IN PEOPLE



Local Area Committees

- Consist of local elected members, some with/without community representatives and key service representatives
- Facilitate community engagement and discussion of ward issues
- Scrutinise council policies at ward level
- Make representations and comments to the council on ward issues
- Provide consultation arrangements and decision making forum for all ward members

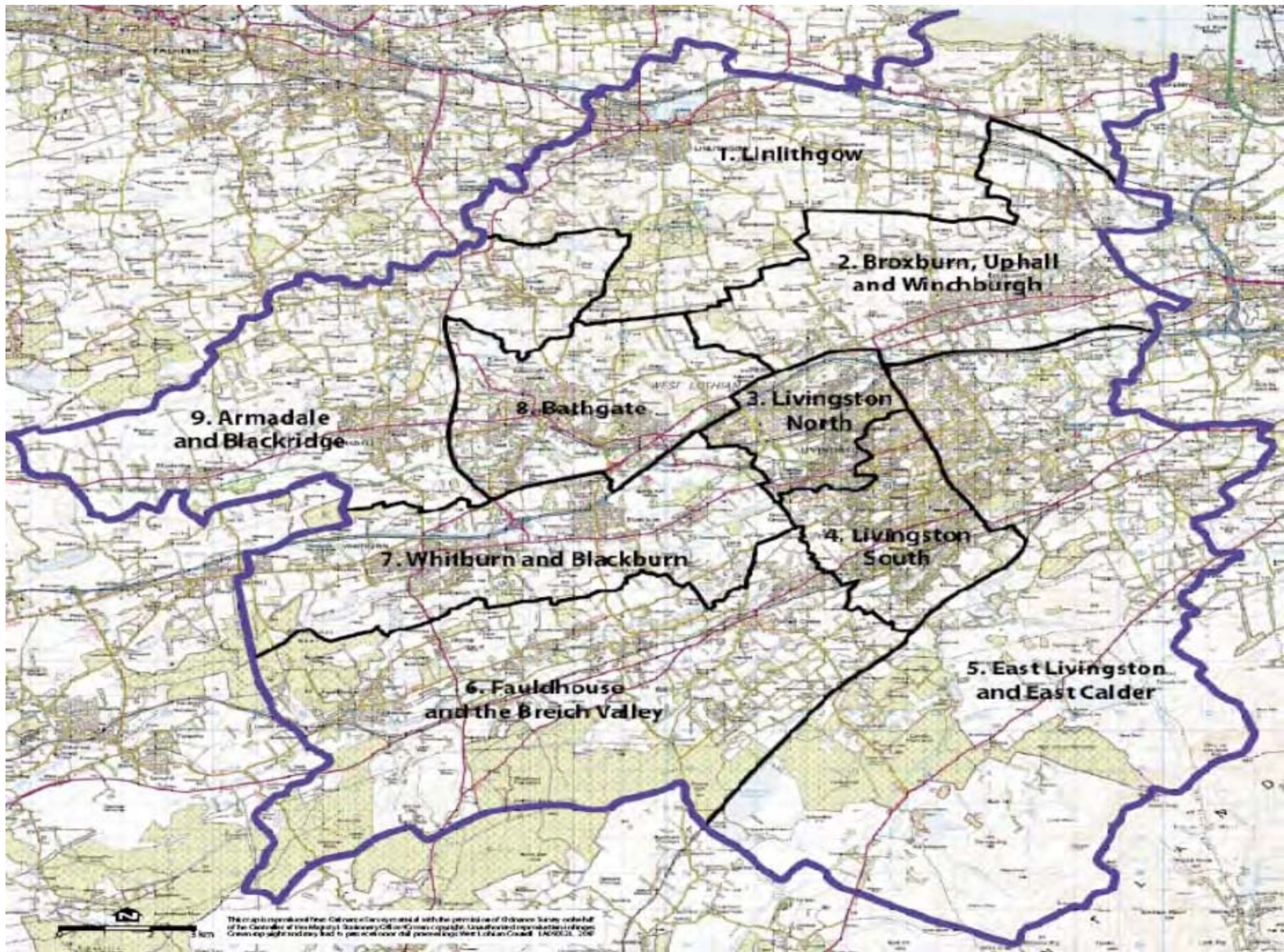
West Lothian Council delivers

westlothian.gov.uk



INVESTOR IN PEOPLE





Single Outcome Agreement - 12 Joint Challenges

Community Safety

Delayed Discharge/Unplanned Admissions

Development Challenge

Educational Attainment and Achievement

Growing and Strengthening our Economy

Health Improvement

Homelessness

Looked after Children

Public Protection

Substance Misuse

Supporting People at Home

Young People needing More Choices More Chances

West Lothian Council delivers

westlothian.gov.uk



INVESTOR IN PEOPLE



Managing SOA Challenges at Local Level

- Opportunities for Increased Local Decision Making

In West Lothian, we are currently reviewing the role of LACs by looking at the potential of how LACs can increase their decision-making powers and budgetary responsibility where appropriate.

Examples include the potential for LACs to be involved in local decisions that affect their area –

- Traffic calming measures
- Town centre improvements
- Anti-social underage drinking initiatives
- Christmas decoration
- Capital programme expenditure that has purely a local dimension
- Specific local initiatives from the SOA
- Locality Planning initiatives

West Lothian Council delivers

westlothian.gov.uk



INVESTOR IN PEOPLE



Locality Planning: story so far

Whitburn and Blackburn Ward

A three pronged approach to assessing community need was taken -

- Statistical analysis of the area
- Consultation with local workers
- Engaging with the community

Local Priorities Identified -

- Young People
- Employability
- Early Years in Blackburn
- Older People in Whitburn

West Lothian Council delivers

westlothian.gov.uk



INVESTOR IN PEOPLE



Locality Planning: story so far

Whitburn and Blackburn Ward

When asked what they would like to change in their community Whitburn and Blackburn people said -

They said:

- Improve appearance of town centre & street litter
- Older people's services and issues of isolation
- Improved bus services
- Need for more children and youth activities
- Young people wanted more access to community centre
- Improved services for parents of pre-school children and more social activity groups for parents and toddlers

What's happened:

- Three-year funding for town centre
- Whitburn Older peoples project established
- Wanderer bus service extended
- Early Years fair and Early Years group set up
- New Youth Drop-in Facility in Blackburn Community Centre
- Young mum's & mum's 2 b group

West Lothian Council delivers

westlothian.gov.uk

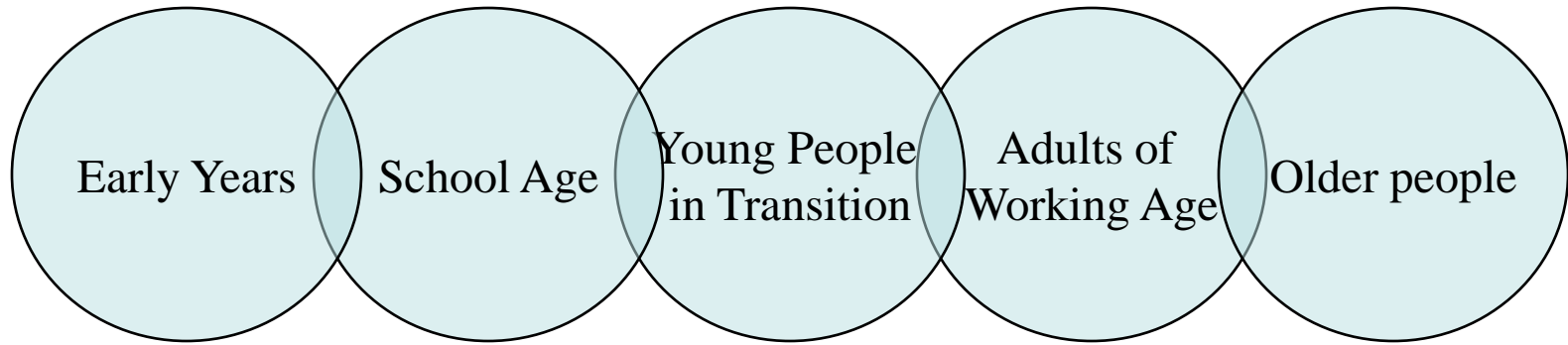


INVESTOR IN PEOPLE



West Lothian Outcome Planning Model

5 Life Stages



West Lothian Council delivers

westlothian.gov.uk



INVESTOR IN PEOPLE

