



# The Low Emission Zone

Rhona Munck  
Strategy Manager: LEZ



# Air Quality in London



- Air pollution is a serious problem in London
  - 1,000 premature deaths per year
  - 1,000 hospital admissions per year
- Affects most vulnerable parts of society
- Majority of Londoners concerned about poor air quality and want to see it improved
- Particular problems with emissions of particulate matter (PM) and nitrogen oxides (NO<sub>x</sub>)
- Worse in central London, main roads, Heathrow
- Road traffic major source of emissions
- Trucks, buses, and coaches largest individual emitters



# Background to proposals

## Mayoral obligation

2001 – Feasibility Study into reducing traffic emissions

2003 – Detailed study into implementing LEZ

2004 – LEZ is Mayoral manifesto commitment

2005 – Strategic Review into LEZ

2005 – TfL asked to consult with public and stakeholders on Strategy Revisions (principle of a LEZ)

2006 – Mayor approved Strategy Revisions, with modifications, following public consultation

2007– Consultation on Scheme Order (details of LEZ)

May 2007 – Mayor Approves LEZ Scheme Order

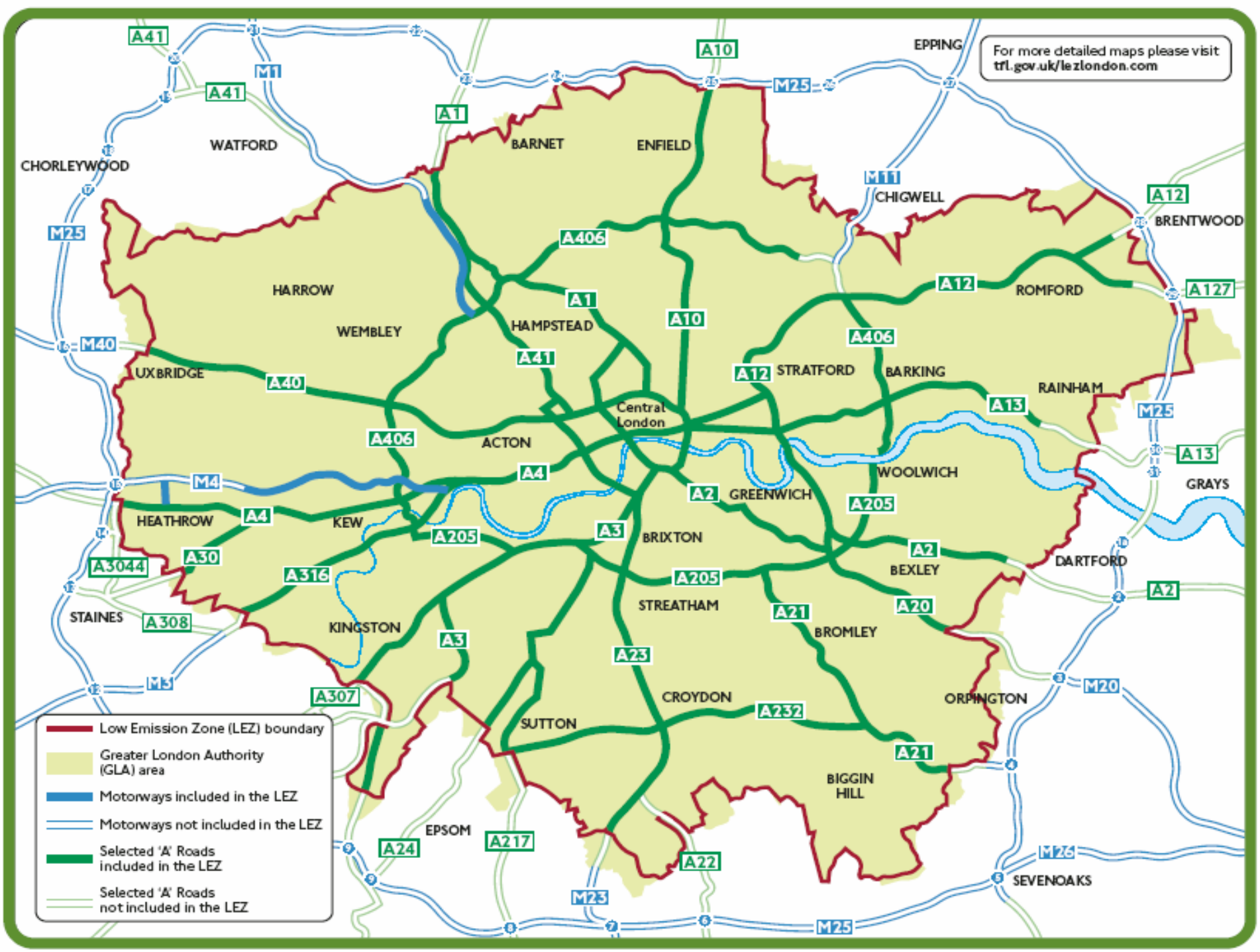


# What is the London Low Emission Zone?

- Environmental zone covering 1580 square kilometres
- Discourages the most individually polluting vehicles from being driven in London
- Requires heaviest diesel-engine vehicles to meet strict emissions standards to drive within London
- Operates 24 hours a day, 365 days per year
- The LEZ does not ban vehicles from London, non-compliant vehicles can pay a charge






For more detailed maps please visit [tfl.gov.uk/lezlondon.com](http://tfl.gov.uk/lezlondon.com)



- Low Emission Zone (LEZ) boundary
- Greater London Authority (GLA) area
- Motorways included in the LEZ
- Motorways not included in the LEZ
- Selected 'A' Roads included in the LEZ
- Selected 'A' Roads not included in the LEZ



# Vehicles Affected by the LEZ

<p>HGVs &gt;12t</p> 	<p>Feb 2008 Euro III Jan 2012 Euro IV <i>for particulates</i></p>	<p>Heavy diesel- engined vehicles &gt;12 tonnes</p>	<p>Includes:</p> <ul style="list-style-type: none"><li>- Goods Vehicles</li><li>- Motor Caravans</li><li>- Motorised Horseboxes</li></ul>
<p>HGVs 3.5t &gt; 12t</p> 	<p>July 2008 Euro III Jan 2012 Euro IV <i>for particulates</i></p>	<p>Heavy diesel- engined vehicles between 3.5 and 12 tonnes</p>	<p>Includes:</p> <ul style="list-style-type: none"><li>- Goods Vehicles</li><li>- Motor Caravans</li><li>- Motorised Horseboxes</li></ul>
<p>Buses &amp; Coaches</p> 	<p>July 2008 Euro III Jan 2012 Euro IV <i>for particulates</i></p>	<p>Heavy diesel- engined passenger vehicles &gt; 5 tonne</p>	<p>Includes:</p> <ul style="list-style-type: none"><li>- Vehicles with more than eight seats, plus the driver's seat</li></ul>

cont...



# Vehicles Affected by the LEZ

<p>Large Vans</p> 	<p>Oct 2010 Euro III <i>for particulates</i></p>	<p>Diesel-engined vehicles between 1.205 tonnes unladen and 3.5 tonnes</p>	<p>Includes:</p> <ul style="list-style-type: none"><li>- Ambulances (over 2.5 tonnes)</li><li>- Motor Caravans (over 2.5 tonnes)</li></ul>
<p>Minibuses</p> 	<p>Oct 2010 Euro III <i>for particulates</i></p>	<p>Diesel-engined passenger vehicles below 5 tonnes</p>	<p>Includes:</p> <ul style="list-style-type: none"><li>- Vehicles with less than eight seats, plus the driver's seat</li></ul>



# Options for Compliance

Options available to operators include:

- Certifying a Euro I/II engine on TfL's Eligible Engine's list meets the standards
- Fitting an approved abatement device
- Converting the engine to gas with a spark ignition.
- Fitting a new compliant engine in the vehicle
- Buying a new or compliant second-hand vehicle
- Reorganising fleet so only compliant vehicles travel in zone
- Or paying the daily charge (online, by phone or post)

Operators driving a non-complaint vehicle without paying the daily charge risk a Penalty Charge Notice



# Certifying a Vehicle as Compliant

Vehicles can be certified as compliant to the LEZ emissions standards by a national body: Vehicle and Operator Services Agency (VOSA) if they have:

- An approved abatement device fitted
  - A Euro I/II engine on TfL's eligible engine list
  - A conversion to gas with a spark emission
- 
- VOSA have 94 national test stations
  - Inspections take approx. 15 minutes.
  - Certification lasts a minimum of 12 months.
  - Future tests can be scheduled as part of the annual vehicle inspection to minimise vehicle down time.



# 100% Discounts/Exempt Vehicles

- Few exemptions so as to maintain the benefits of the scheme
- Exemptions/discounts have been granted where there are problems with retro-fitting or identifying the emissions of vehicles:
  - UK and Foreign Military Vehicles (green fleet)
  - Historic Vehicles (registered pre 1973)
  - Non-Road Going Vehicles
  - Showman's Vehicles



# Registrations

The following vehicles must register with TfL to enable them to travel within the zone without charge:

- **NI registered vehicles**

- If they meet the required emissions standards ( e.g. are Euro III certified or have been issued with an RPC from DVA testing)
- If they qualify for a discount or exemption (see later)

- **Non-GB Registered vehicles**

- if they meet the required emissions standards
- If they qualify for a discount or exemption (see later)

- **GB Registered vehicles**

- Eligible Showman's vehicles must register to qualify for a 100% discount
- In the event TfL has classified a vehicle as non-compliant, but the operator can provide documentary evidence that the vehicle does meet the required standard.



# How will LEZ operate



- The LEZ is a charging scheme – but most will avoid paying the charge by driving a compliant vehicle.
- There will be signs at entry points and in the zone
- Vehicles which are subject to the LEZ are detected using fixed and mobile cameras
- TfL checks vehicle registration against a register of compliant vehicles
- Non compliant vehicles have to pay a daily charge
  - £200 per day for HGV, buses and coaches
  - £100 per day for vans and minibuses
- Charging day midnight to midnight, 365 days a year
- Payment can be made by phone or internet, up to midnight on the next **working** day after entering the zone



# Enforcement of the LEZ

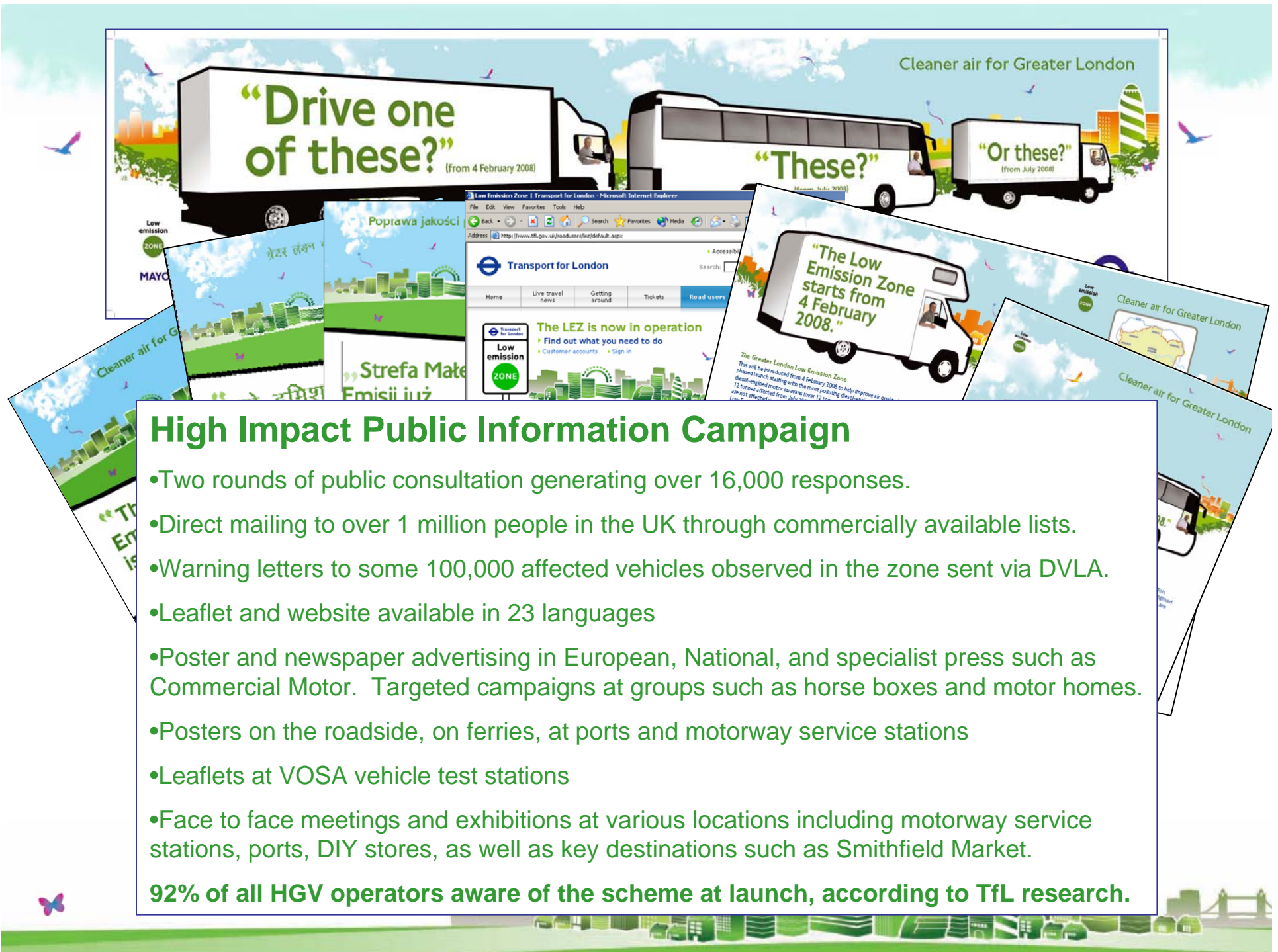
- Vehicles which are non compliant, or which are not on the register will be sent a Penalty Charge Notice:
  - £1000 (reduced to £500 if paid within 14 days) for HGVs, buses & coaches (subject to LEZ in 2008)
  - £500 (reduced to £250 if paid within 14 days) for heavier LGVs & minibuses (subject to LEZ in 2010)
- Our agent, EPC, has agreements with vehicle registration authorities in a number of European countries to obtain vehicle and keeper information
- EPC already successfully collects outstanding foreign penalty charges for CC, in countries where they can gain access to keeper details.
- Since data needed to identify the vehicle characteristics is not available, non-GB registered vehicles which are compliant need to register with TfL.
- The first time vehicles are observed in the zone they will be sent a warning letter, giving them the opportunity to register



# Helping Operators Understand the LEZ

- Online Compliance Checker allows operators to check the status of their vehicles by entering their license plate
- 732 entry signs were installed at every entry point to the LEZ, and 322 enforcement cameras were installed at strategic points across the capital.
- TfL set up a dedicated enquiries service to help vehicle owners understand how they can comply with the scheme. To date over 33,000 calls since May 2007.
- TfL established a comprehensive registrations process for foreign registered vehicles. To date some 20,000 vehicles from 43 countries have registered with TfL.





## High Impact Public Information Campaign

- Two rounds of public consultation generating over 16,000 responses.
- Direct mailing to over 1 million people in the UK through commercially available lists.
- Warning letters to some 100,000 affected vehicles observed in the zone sent via DVLA.
- Leaflet and website available in 23 languages
- Poster and newspaper advertising in European, National, and specialist press such as Commercial Motor. Targeted campaigns at groups such as horse boxes and motor homes.
- Posters on the roadside, on ferries, at ports and motorway service stations
- Leaflets at VOSA vehicle test stations
- Face to face meetings and exhibitions at various locations including motorway service stations, ports, DIY stores, as well as key destinations such as Smithfield Market.

**92% of all HGV operators aware of the scheme at launch, according to TfL research.**

## Global Media Coverage

The LEZ was the lead story on BBC London and ITV's London Tonight on 4 February, and featured on the Politics Show on 3 February.

The LEZ also featured in press coverage all over the world, including the USA and Australia, Japan & China.

### THE WALL STREET JOURNAL

#### Polluting trucks entering London have to pay \$400

Wall Street Journal Europe 5 February 2008

### guardian

#### London launches £200-a-day 'dirty lorry' entry charge

Guardian 4 February 2008



#### Truck pollution fine for capital

Financial Times 2 February 2008.

### thelondonpaper

#### Dirty truckers' zone toll

The London Paper 5 February 2008



#### London's new low emission zone will be a breath of fresh air

Surveyor 31 January 2008



*"London's low emission zone will add to its reputation as a leader in sustainable transport policies, following its congestion pricing scheme."*

Reuters 1 February 2008.

### MotorTransport

*"There has been so much publicity about the LEZ... you'd have to have been living in a cave for the last 12 months not to have picked up something about it"*

Motor Transport 7 February 2008



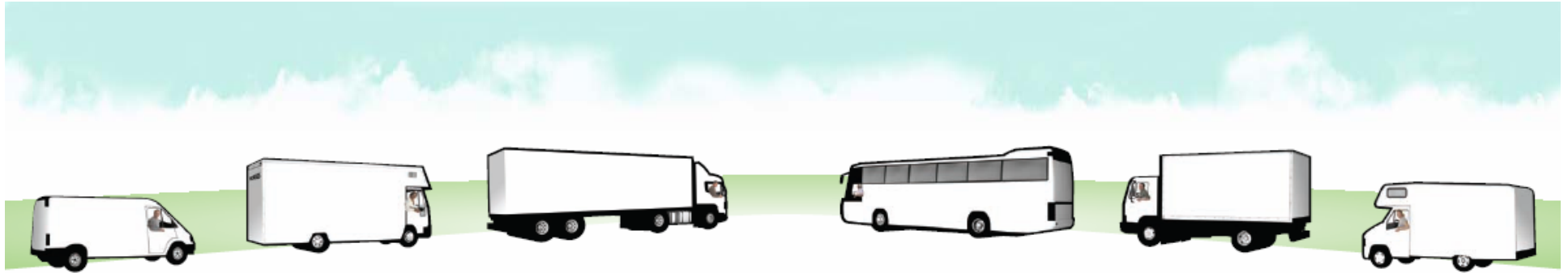
### Evening Standard

standard.co.uk

*"This is an ambitious project with a worthwhile goal, which deserves to succeed"*

Evening Standard 4 February 2008.





## Key achievements of the LEZ

- A 71% reduction in the number of vehicles not meeting the LEZ standards and driving in the zone since June 2007.
- High levels of operator action means that 93% of all HGVs over 12 tonnes driving in the zone meet the Euro III standard for PM.
- By 2012 the LEZ is expected to bring forward by three to four years the reductions in particulate matter emissions that would otherwise be achieved by the natural vehicle replacement cycle.
- The benefits are doubled when affects beyond the zone boundary are taken into account: the cleaner vehicles drive outside of London too.

*“Traffic pollution is a major problem for people with asthma in London, with 66% telling us that it aggravates their condition, sometimes resulting in debilitating asthma attacks.”*

Neil Churchill, Chief Executive of Asthma UK

*“I believe that the actions taking place in London are making it easier for us in the rest of the UK [...] to challenge dangerous levels of pollution.”*

Dr Nathan J Pittam, Scientific Officer (Air Quality Management), Chelmsford Borough Council



# What will the LEZ achieve?

## *Health impacts*

- The LEZ will improve the health of many people who live, work and visit London:
  - Defra estimates that up to 5362 years of life expectancy lost across London would be gained.
  - EU Café estimates that the LEZ will bring:
    - 350,000 fewer cases of lesser respiratory symptoms
    - 34,000 fewer cases of respiratory medication use
    - 256,000 fewer restricted activity days.

*“Any initiative which reduces harmful emissions for Londoners is a positive step forward... Improving the air we breathe should mean fewer premature deaths, reduced hospital visits, and fewer GP consultations for people with respiratory disease.”*

Dr Keith Prowse, Chairman of British Lung Foundation



# LEZ Enquiries Go Live!

[www.tfl.gov.uk/lezlondon](http://www.tfl.gov.uk/lezlondon)

**Phone (within the UK): 0845 607 0009**

**Phone (outside the UK): +44 (0) 207 310 8998**

**Text phone: 0207 310 8999**

**Email: [lezlondon@tfl.gov.uk](mailto:lezlondon@tfl.gov.uk)**

**Post: Low Emission Zone Contact Centre,  
PO Box 4544, Coventry CV6 9DW**

